

# Converting Colors

Android(4292592584)

Have a look what the booklet for  
Android(4292592584) contains.

<b>Android(4292592584)</b> .....	3
<b><i>Conversions</i></b> .....	4
<b><i>Details</i></b> .....	6
<b><i>Harmonies</i></b> .....	11
<b><i>Previews</i></b> .....	23
<b><i>Color Blindness Simulation</i></b> .....	26
<b><i>CSS Examples</i></b> .....	29

# **Color**

**Android(4292592584)**

# Conversions

## Conversions Part 1

Format	Color
Hex	DBC3C8
RGB	219, 195, 200
RGB Percent	86%, 76%, 78%
CMY	0.1412, 0.2353, 0.2157
CMYK	0.00, 0.11, 0.09, 0.14
HSL	348°, 25%, 81%
HSV	348°, 11%, 86%
XYZ	59.1539, 58.2604, 62.7712
YIQ	202.7460, 12.6990, 6.6430

# Conversions

## Conversions Part 2

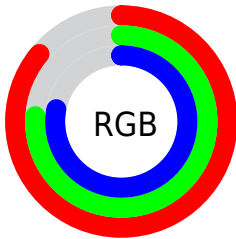
<b>Format</b>	<b>Color</b>
<b>R<sub>YB</sub></b>	219, 195, 200
Decimal	14402504
CIE <sub>Lab</sub>	80.88, 9.29, 0.59
CIE <sub>LCh</sub>	81, 9.310, 3.604
Yxy	58.2604, 0.3283, 0.3233
Android (android.graphics.Color)	4292592584 (0xFFDBC3C8)
YUV	202.7460, -1.3538, 14.2548
Hunter-Lab	76.3285, 4.7609, 4.6709

# Details

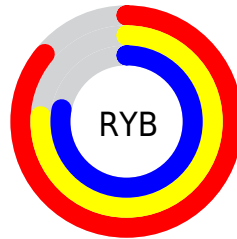
The Android color `4292592584` is a light color, and the websafe version is hex `CCCCCC`. A complement of this color would be `4291025878`, and the grayscale version is `4291546059`.

A 20% lighter version of the original color is `4294966527`, and `4288974226` is the 20% darker color. If you saturate the color by 10%, you get `4292586935`, and if you desaturate by 10%, it is `4292598233`.

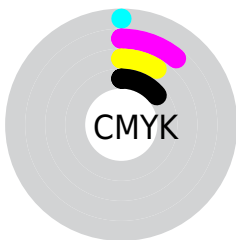
# Distribution



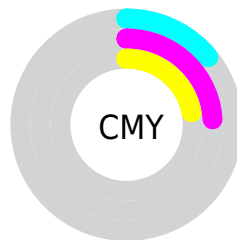
- Red (86%)
- Green (76%)
- Blue (78%)



- Red (86%)
- Yellow (76%)
- Blue (78%)



- Cyan (0%)
- Magenta (11%)
- Yellow (9%)
- Black (14%)



- Cyan (14%)
- Magenta (24%)
- Yellow (22%)

# Brightness & Saturation Gradients

These gradients show how the Android color 4292592584 changes by changing the brightness by 10 percent. The first figure shows a shift by +10% for each color and the second figure -10%.

Similar to the brightness gradients but the following saturation gradients show a change of the Android color 4292592584 by changing the saturation by 10% instead.



 4292592584

 4292592584

4294967295

 4290750637

 4294966527

 4288974226

 4287263864

 4285553504

 4283909192

 4282395954

 4280949021

 4279697410

 4278190080

 4292592584

 4292592584

 4292586935

 4292598233

 4292581285

 4292603883

 4292575636

 4292607996

 4292569987

 4292607999

 4292564593

 4292558944

 4292553295

 4292547645

 4292542510

# Harmonies

## Analogous

The Analogous color harmony consists of three colors that are next to each other on the color wheel.



4292199633



4292592584



4292658368

# Triad

The Triadic color harmony groups three colors that are evenly spaced from another and form a triangle on the color wheel.



4292592584



4291152826



4290301144

# Complementary

The Complementary color scheme is a pair of colors which are on the opposite of each other on the color wheel.



4292592584



4291025878

# Split Complementary

Split-complementary colors differ from the complementary color scheme. The scheme consists of three colors, the original color and two neighbors of the complement color.



4290039506



4292592584



4290563521

# Square

The Square scheme is like the rectangle color scheme, but the four colors are evenly spaced on the color wheel.



4292592584



4291807416



4290105034



4290890202

# Rectangle

The Rectangle color scheme consists of four colors that form a rectangle on the color wheel.



4292592584



4292462011



4290105034



4290170326



# Sweetspot

The Sweet Spot groups the original color and five complimentary colors.



4292592584



4294965241



4292264923



4286610043



4278190080



4286611584



# Same Dimension

The Same Dimension uses a secret algorithm to generate beautiful new colors.



4292592584



4294958821



4292594371



4285424485



4289527844



4281204746



# Inverse Universe

The Inverse Universe completely reimagines the original color for something new.



4292592584



4294958821



4291024091



4285424485



4289527844

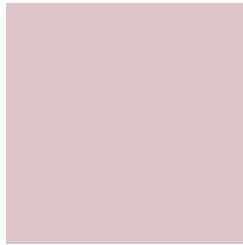


4281204746



# Previews

## White Background



This preview shows how the Android color 4292592584 looks on a white background.

## Color Contrast Check

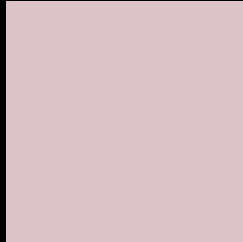
Large Text (above 18pt) WCAG AA × Fail

Any Text WCAG AA × Fail

Large Text (above 18pt) WCAG AAA × Fail

Any Text WCAG AAA × Fail

# Black Background



This preview shows how the Android color 4292592584 looks on a black background.

## Color Contrast Check

Large Text (above 18pt) WCAG AA ✓ Pass

Any Text WCAG AA ✓ Pass

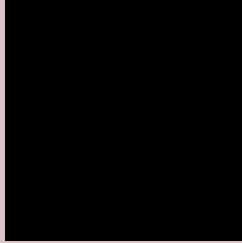
Large Text (above 18pt) WCAG AAA ✓ Pass

Any Text WCAG AAA ✓ Pass

If you want to check with other color combinations, try the [Color Contrast Checker](#).



# Android 4292592584 Background



This preview shows how black text looks on a background with the Android color 4292592584.



This preview shows how white text looks on a background with the Android color 4292592584.

# Color Blindness Simulation

Color vision deficiency is a very complex topic, and I could not describe the different causes any better than Wikipedia does, so if you want to learn more, you should check out their [article about color blindness](#).


## Dichromacy



**Original Color**  
4292592584

**Protanopia**  
4291610827

**Deuteranopia**  
4292657864



**Tritanopia**  
4292657873

# Trichromacy



**Original Color**  
4292592584

**Protanomaly**  
4291937994

**Deuteranomaly**  
4292657864

**Tritanomaly**  
4292657870

# Monochromacy



**Original Color**  
4292592584

**Achromatopsia**  
4291546059

**Achromatomaly**  
4291938506

# CSS Examples

## Text

The CSS property to change the color of the text to Android 4292592584 is called "color". The color property can be set on classes, ids or directly on the HTML element.

This example shows how text in the color `rgb(219, 195, 200)` looks like.

```
.text, #text, p{  
    color:rgb(219, 195, 200)  
}
```

If you want to add a text shadow in that color use the text-shadow property, you can generate a text shadow directly with our [CSS Text Shadow Generator](#).

Here you see how black text with a 4 pixel rgb(219, 195, 200) colored shadow looks like.

```
.shadow{ text-shadow: 4px 4px 2px rgb(219, 195, 200) }
```

## Border

The CSS property to change the border of an element to Android 4292592584 is called "border". The border property can be set on classes, ids or directly on the HTML element.

This example shows the color as border, it can be applied via the CSS property "border" or "border-color".

```
.border, #border, table{ border:4px solid rgb(219, 195, 200) }
```

If only the border color should be changed use the property `border-color`.

```
.border{ border-color:rgb(219, 195, 200) }
```

If you want to add a box shadow in that color use:

Here you see how a box with a 4 pixel `rgb(219, 195, 200)` colored shadow looks like.

```
.boxshadow{ -moz-box-shadow:4px 4px 4px  
4px rgb(219, 195, 200); -webkit-box-  
shadow:4px 4px 4px 4px rgb(219, 195, 200);  
box-shadow:4px 4px 4px 4px rgb(219, 195,  
200) }
```

# Background

The CSS property to change the background color of an element to Android 4292592584 is called "background". The background property can be set on classes, ids or directly on the HTML element.

```
.background, #background, body{  
background: rgb(219, 195, 200) }
```

If only the background color should be changed can be used:

```
.background{ background-color: rgb(219,  
195, 200) }
```

This example shows the color as background, it is applied via the CSS property "background".

To optimize and compress your CSS code, you can use our [online CSS compressor and optimizer](#) based on csstidy. If you want to create a linear or radial gradient as background or border, check our [CSS Gradient Generator](#).



Hey! You found this booklet interesting? Support Converting Colors with the new Membership Option!

The pro membership hides all ads, plus gives you double the colors in the color bucket, and more awesome pro features!

**[Learn more, Memberships starting at \\$2.50/m!](#)**

**Follow me  
on Twitter!**

@ConvertingColor