

Converting Colors

Android(4292593602)

Have a look what the booklet for
Android(4292593602) contains.

Android(4292593602)	3
<i>Conversions</i>	4
<i>Details</i>	6
<i>Harmonies</i>	11
<i>Previews</i>	23
<i>Color Blindness Simulation</i>	26
<i>CSS Examples</i>	29

Color

Android(4292593602)

Conversions

Conversions Part 1

Format	Color
Hex	DBC7C2
RGB	219, 199, 194
RGB Percent	86%, 78%, 76%
CMY	0.1412, 0.2196, 0.2392
CMYK	0.00, 0.09, 0.11, 0.14
HSL	12°, 26%, 81%
HSV	12°, 11%, 86%
XYZ	59.3744, 59.8020, 59.4525
YIQ	204.4100, 13.5250, 2.6850

Conversions

Conversions Part 2

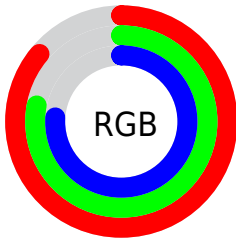
Format	Color
R _Y B	219, 200, 194
Decimal	14403522
CIE Lab	81.73, 6.17, 5.03
CIE LCh	82, 7.962, 39.201
Yxy	59.8020, 0.3324, 0.3348
Android (android.graphics.Color)	4292593602 (0xFFDBC7C2)
YUV	204.4100, -5.1321, 12.7954
Hunter-Lab	77.3317, 1.7198, 8.5502

Details

The Android color `4292593602` is a light color, and the websafe version is hex `CCCCCC`. A complement of this color would be `4290959067`, and the grayscale version is `4291611852`.

A 20% lighter version of the original color is `4294967290`, and `4288975244` is the 20% darker color. If you saturate the color by 10%, you get `4292588972`, and if you desaturate by 10%, it is `4292598232`.

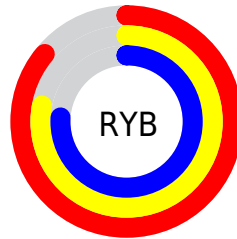
Distribution



Red (86%)

Green (78%)

Blue (76%)



Red (86%)

Yellow (78%)

Blue (76%)

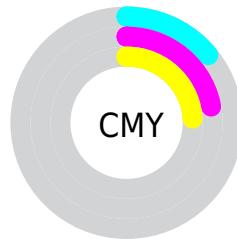


Cyan (0%)

Magenta (9%)

Yellow (11%)

Black (14%)



Cyan (14%)

Magenta (22%)

Yellow (24%)

Brightness & Saturation Gradients

These gradients show how the Android color 4292593602 changes by changing the brightness by 10 percent. The first figure shows a shift by +10% for each color and the second figure -10%.

Similar to the brightness gradients but the following saturation gradients show a change of the Android color 4292593602 by changing the saturation by 10% instead.



4292593602



4292593602

4294967295



4290751655



4294967290



4288975244



4287199091



4285554522



4283909955



4282396973



4280884248



4279632128



4278190080

 4292593602

 4292593602

 4292588972

 4292598232

 4292584598

 4292602606

 4292579968

 4292607231

 4292575594

 4292607999

 4292570964

 4292566591

 4292561961

 4292557587

 4292553728

Harmonies

Analogous

The Analogous color harmony consists of three colors that are next to each other on the color wheel.



4292593353



4292593602



4292331965

Triad

The Triadic color harmony groups three colors that are evenly spaced from another and form a triangle on the color wheel.



4292593602



4290760646



4291218394

Complementary

The Complementary color scheme is a pair of colors which are on the opposite of each other on the color wheel.



4292593602



4290959067

Split Complementary

Split-complementary colors differ from the complementary color scheme. The scheme consists of three colors, the original color and two neighbors of the complement color.



4290694617



4292593602



4290433229

Square

The Square scheme is like the rectangle color scheme, but the four colors are evenly spaced on the color wheel.



4292593602



4291219135



4290432980



4291873239

Rectangle

The Rectangle color scheme consists of four colors that form a rectangle on the color wheel.



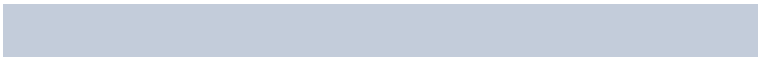
4292593602



4292004796



4290432980



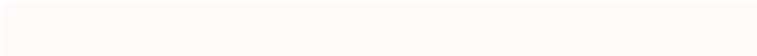
4291022042

Sweetspot

The Sweet Spot groups the original color and five complimentary colors.



4292593602



4294965751



4292592342



4286610298



4278190080



4286611584

Same Dimension

The Same Dimension uses a secret algorithm to generate beautiful new colors.



4292593602



4294959835



4292596674



4285424995



4289536768



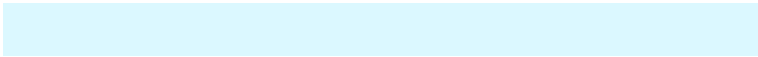
4281207040

Inverse Universe

The Inverse Universe completely reimagines the original color for something new.



4290959067



4292606207



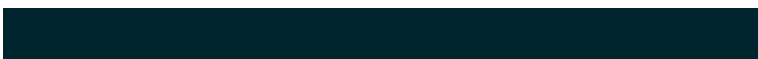
4290955995



4284705646



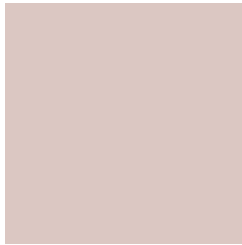
4278225837



4278199598

Previews

White Background



This preview shows how the Android color 4292593602 looks on a white background.

Color Contrast Check

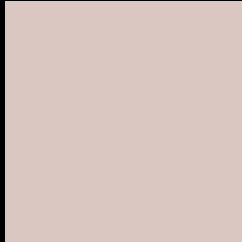
Large Text (above 18pt) WCAG AA × Fail

Any Text WCAG AA × Fail

Large Text (above 18pt) WCAG AAA × Fail

Any Text WCAG AAA × Fail

Black Background



This preview shows how the Android color 4292593602 looks on a black background.

Color Contrast Check

Large Text (above 18pt) WCAG AA ✓ Pass

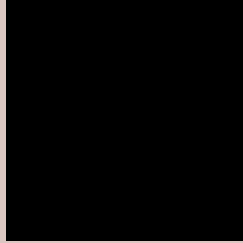
Any Text WCAG AA ✓ Pass

Large Text (above 18pt) WCAG AAA ✓ Pass

Any Text WCAG AAA ✓ Pass

If you want to check with other color combinations, try the [Color Contrast Checker](#).

Android 4292593602 Background



This preview shows how black text looks on a background with the Android color 4292593602.



This preview shows how white text looks on a background with the Android color 4292593602.

Color Blindness Simulation

Color vision deficiency is a very complex topic, and I could not describe the different causes any better than Wikipedia does, so if you want to learn more, you should check out their [article about color blindness](#).

Dichromacy

	Original Color 4292593602
	Protanopia 4291939012
	Deuteranopia 4293051587



Tritanopia
4292723924

Trichromacy



Original Color
4292593602

Protanomaly
4292200899

Deuteranomaly
4292855235

Tritanomaly
4292658637

Monochromacy



Original Color
4292593602

Achromatopsia
4291611852

Achromatomaly
4291939016

CSS Examples

Text

The CSS property to change the color of the text to Android 4292593602 is called "color". The color property can be set on classes, ids or directly on the HTML element.

This example shows how text in the color `rgb(219, 199, 194)` looks like.

```
.text, #text, p{  
    color:rgb(219, 199, 194)  
}
```

If you want to add a text shadow in that color use the text-shadow property, you can generate a text shadow directly with our [CSS Text Shadow Generator](#).

Here you see how black text with a 4 pixel rgb(219, 199, 194) colored shadow looks like.

```
.shadow{ text-shadow: 4px 4px 2px rgb(219, 199, 194) }
```

Border

The CSS property to change the border of an element to Android 4292593602 is called "border". The border property can be set on classes, ids or directly on the HTML element.

This example shows the color as border, it can be applied via the CSS property "border" or "border-color".

```
.border, #border, table{ border:4px solid rgb(219, 199, 194) }
```

If only the border color should be changed use the property `border-color`.

```
.border{ border-color:rgb(219, 199, 194) }
```

If you want to add a box shadow in that color use:

Here you see how a box with a 4 pixel `rgb(219, 199, 194)` colored shadow looks like.

```
.boxshadow{ -moz-box-shadow:4px 4px 4px  
4px rgb(219, 199, 194); -webkit-box-  
shadow:4px 4px 4px 4px rgb(219, 199, 194);  
box-shadow:4px 4px 4px 4px rgb(219, 199,  
194) }
```

Background

The CSS property to change the background color of an element to Android 4292593602 is called "background". The background property can be set on classes, ids or directly on the HTML element.

```
.background, #background, body{  
background: rgb(219, 199, 194) }
```

If only the background color should be changed can be used:

```
.background{ background-color: rgb(219,  
199, 194) }
```

This example shows the color as background, it is applied via the CSS property "background".

To optimize and compress your CSS code, you can use our [online CSS compressor and optimizer](#) based on csstidy. If you want to create a linear or radial gradient as background or border, check our [CSS Gradient Generator](#).

Hey! You found this booklet interesting? Support Converting Colors with the new Membership Option!

The pro membership hides all ads, plus gives you double the colors in the color bucket, and more awesome pro features!

[Learn more, Memberships starting at \\$2.50/m!](#)

**Follow me
on Twitter!**

@ConvertingColor