

Converting Colors

Android(4292594636)

Have a look what the booklet for
Android(4292594636) contains.

Android(4292594636)	3
<i>Conversions</i>	4
<i>Details</i>	6
<i>Harmonies</i>	11
<i>Previews</i>	23
<i>Color Blindness Simulation</i>	26
<i>CSS Examples</i>	29

Color

Android(4292594636)

Conversions

Conversions Part 1

Format	Color
Hex	DBCBC
RGB	219, 203, 204
RGB Percent	86%, 80%, 80%
CMY	0.1412, 0.2039, 0.2000
CMYK	0.00, 0.07, 0.07, 0.14
HSL	356°, 18%, 83%
HSV	356°, 7%, 86%
XYZ	61.4684, 62.1316, 65.8796
YIQ	207.8980, 9.2150, 3.7030

Conversions

Conversions Part 2

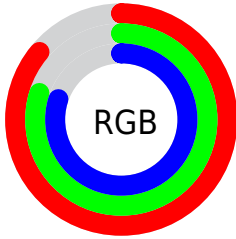
Format	Color
R _Y B	219, 203, 204
Decimal	14404556
CIE Lab	82.98, 5.74, 1.50
CIE LCh	83, 5.930, 14.677
Yxy	62.1316, 0.3244, 0.3279
Android (android.graphics.Color)	4292594636 (0xFFDBCBC)
YUV	207.8980, -1.9217, 9.7365
Hunter-Lab	78.8236, 1.2571, 5.6228

Details

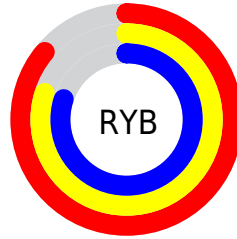
The Android color `4292594636` is a light color, and the websafe version is hex `CCCCCC`. A complement of this color would be `4291550170`, and the grayscale version is `4291875024`.

A 20% lighter version of the original color is `4294967295`, and `4288976278` is the 20% darker color. If you saturate the color by 10%, you get `4292588983`, and if you desaturate by 10%, it is `4292600289`.

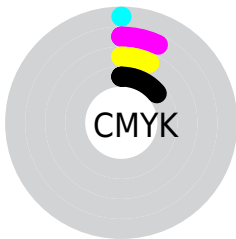
Distribution



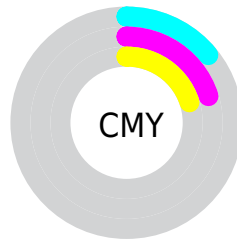
- Red (86%)
- Green (80%)
- Blue (80%)



- Red (86%)
- Yellow (80%)
- Blue (80%)



- Cyan (0%)
- Magenta (7%)
- Yellow (7%)
- Black (14%)



- Cyan (14%)
- Magenta (20%)
- Yellow (20%)

Brightness & Saturation Gradients

These gradients show how the Android color 4292594636 changes by changing the brightness by 10 percent. The first figure shows a shift by +10% for each color and the second figure -10%.

Similar to the brightness gradients but the following saturation gradients show a change of the Android color 4292594636 by changing the saturation by 10% instead.

 4292594636

 4292594636

4294967295

 4290752689

 4288976278

 4287265660

 4285555299

 4283976267

 4282397749

 4280950560

 4279698951

 4278190080

 4292594636

 4292594636

 4292588983

 4292600289

 4292583331

 4292605941

 4292577678

 4292607999

 4292572026

 4292566629

 4292560977

 4292555324

 4292549672

 4292544019

Harmonies

Analogous

The Analogous color harmony consists of three colors that are next to each other on the color wheel.



4292398034



4292594636



4292529351

Triad

The Triadic color harmony groups three colors that are evenly spaced from another and form a triangle on the color wheel.



4292594636



4291482055



4291219673

Complementary

The Complementary color scheme is a pair of colors which are on the opposite of each other on the color wheel.



4292594636



4291550170

Split Complementary

Split-complementary colors differ from the complementary color scheme. The scheme consists of three colors, the original color and two neighbors of the complement color.



4290957782



4292594636



4291089099

Square

The Square scheme is like the rectangle color scheme, but the four colors are evenly spaced on the color wheel.



4292594636



4291874756



4290892497



4291612377

Rectangle

The Rectangle color scheme consists of four colors that form a rectangle on the color wheel.



4292594636



4292398533



4290892497



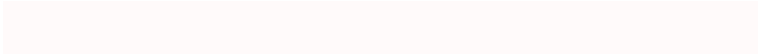
4291088856

Sweetspot

The Sweet Spot groups the original color and five complimentary colors.



4292594636



4294966010



4292529115



4286610813



4278190080



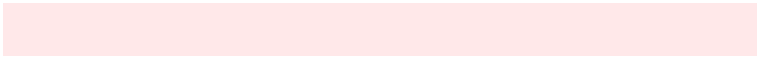
4286611584

Same Dimension

The Same Dimension uses a secret algorithm to generate beautiful new colors.



4292594636



4294961385



4292596427



4285424483



4289527819



4281204739

Inverse Universe

The Inverse Universe completely reimagines the original color for something new.



4292594636



4294961385



4291548379



4285424483



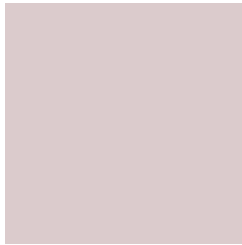
4289527819



4281204739

Previews

White Background



This preview shows how the Android color 4292594636 looks on a white background.

Color Contrast Check

Large Text (above 18pt) WCAG AA × Fail

Any Text WCAG AA × Fail

Large Text (above 18pt) WCAG AAA × Fail

Any Text WCAG AAA × Fail

Black Background



This preview shows how the Android color 4292594636 looks on a black background.

Color Contrast Check

Large Text (above 18pt) WCAG AA ✓ Pass

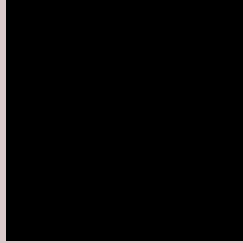
Any Text WCAG AA ✓ Pass

Large Text (above 18pt) WCAG AAA ✓ Pass

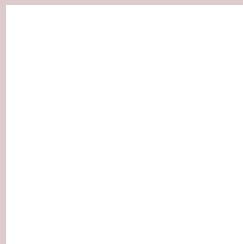
Any Text WCAG AAA ✓ Pass

If you want to check with other color combinations, try the [Color Contrast Checker](#).

Android 4292594636 Background



This preview shows how black text looks on a background with the Android color 4292594636.

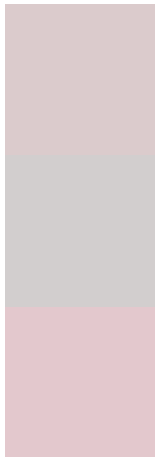


This preview shows how white text looks on a background with the Android color 4292594636.

Color Blindness Simulation

Color vision deficiency is a very complex topic, and I could not describe the different causes any better than Wikipedia does, so if you want to learn more, you should check out their [article about color blindness](#).

Dichromacy



Original Color
4292594636

Protanopia
4292005582

Deuteranopia
4293118157

Trichromacy



Original Color
4292594636

Protanomaly
4292201933

Deuteranomaly
4292921805

Tritanomaly
4292659924

Monochromacy



Original Color
4292594636

Achromatopsia
4291875024

Achromatomaly
4292136655

CSS Examples

Text

The CSS property to change the color of the text to Android 4292594636 is called "color". The color property can be set on classes, ids or directly on the HTML element.

This example shows how text in the color rgb(219, 203, 204) looks like.

```
.text, #text, p{  
    color:rgb(219, 203, 204)  
}
```

If you want to add a text shadow in that color use the text-shadow property, you can generate a text shadow directly with our [CSS Text Shadow Generator](#).

Here you see how black text with a 4 pixel rgb(219, 203, 204) colored shadow looks like.

```
.shadow{ text-shadow: 4px 4px 2px rgb(219, 203, 204) }
```

Border

The CSS property to change the border of an element to Android 4292594636 is called "border". The border property can be set on classes, ids or directly on the HTML element.

This example shows the color as border, it can be applied via the CSS property "border" or "border-color".

```
.border, #border, table{ border:4px solid rgb(219, 203, 204) }
```

If only the border color should be changed use the property `border-color`.

```
.border{ border-color:rgb(219, 203, 204) }
```

If you want to add a box shadow in that color use:

Here you see how a box with a 4 pixel `rgb(219, 203, 204)` colored shadow looks like.

```
.boxshadow{ -moz-box-shadow:4px 4px 4px  
4px rgb(219, 203, 204); -webkit-box-  
shadow:4px 4px 4px 4px rgb(219, 203, 204);  
box-shadow:4px 4px 4px 4px rgb(219, 203,  
204) }
```

Background

The CSS property to change the background color of an element to Android 4292594636 is called "background". The background property can be set on classes, ids or directly on the HTML element.

```
.background, #background, body{  
background: rgb(219, 203, 204) }
```

If only the background color should be changed can be used:

```
.background{ background-color: rgb(219,  
203, 204) }
```

This example shows the color as background, it is applied via the CSS property "background".

To optimize and compress your CSS code, you can use our [online CSS compressor and optimizer](#) based on csstidy. If you want to create a linear or radial gradient as background or border, check our [CSS Gradient Generator](#).

Hey! You found this booklet interesting? Support Converting Colors with the new Membership Option!

The pro membership hides all ads, plus gives you double the colors in the color bucket, and more awesome pro features!

[Learn more, Memberships starting at \\$2.50/m!](#)

**Follow me
on Twitter!**

@ConvertingColor