

Converting Colors

Android(4292628865)

Have a look what the booklet for
Android(4292628865) contains.

Android(4292628865)	3
<i>Conversions</i>	4
<i>Details</i>	6
<i>Harmonies</i>	11
<i>Previews</i>	23
<i>Color Blindness Simulation</i>	26
<i>CSS Examples</i>	29

Color

Android(4292628865)

Conversions

Conversions Part 1

Format	Color
Hex	DC5181
RGB	220, 81, 129
RGB Percent	86%, 32%, 51%
CMY	0.1373, 0.6824, 0.4941
CMYK	0.00, 0.63, 0.41, 0.14
HSL	339°, 67%, 59%
HSV	339°, 63%, 86%
XYZ	36.4201, 22.6855, 23.2281
YIQ	128.0330, 67.4360, 44.3960

Conversions

Conversions Part 2

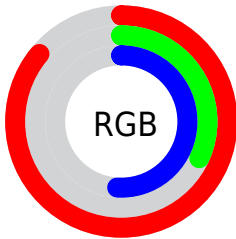
Format	Color
R _Y B	220, 81, 129
Decimal	14438785
CIE Lab	54.75, 58.22, 2.47
CIE LCh	55, 58.274, 2.433
Yxy	22.6855, 0.4423, 0.2755
Android (android.graphics.Color)	4292628865 (0xFFDC5181)
YUV	128.0330, 0.4767, 80.6551
Hunter-Lab	47.6293, 53.1401, 4.4257

Details

The Android color **4292628865** is a dark color, and the websafe version is hex **CC3366**. The color can be described as middle muted rose. A complement of this color would be **4283554988**, and the grayscale version is **4286611584**.

A 20% lighter version of the original color is **4294937014**, and **4288679248** is the 20% darker color. If you saturate the color by 10%, you get **4292623219**, and if you desaturate by 10%, it is **4292634511**.

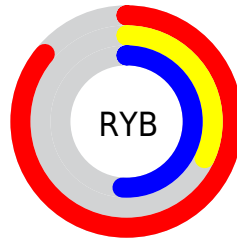
Distribution



Red (86%)

Green (32%)

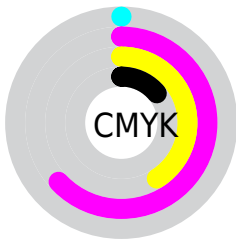
Blue (51%)



Red (86%)

Yellow (32%)

Blue (51%)

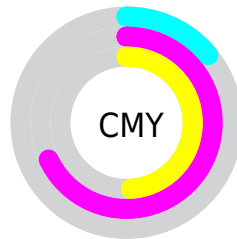


Cyan (0%)

Magenta (63%)

Yellow (41%)

Black (14%)



Cyan (14%)

Magenta (68%)

Yellow (49%)

Brightness & Saturation Gradients

These gradients show how the Android color 4292628865 changes by changing the brightness by 10 percent. The first figure shows a shift by +10% for each color and the second figure -10%.

Similar to the brightness gradients but the following saturation gradients show a change of the Android color 4292628865 by changing the saturation by 10% instead.



4292628865



4292628865

4294967295



4290655336



4294937014



4288679248



4294944209



4286775353



4294951661



4284874788



4294959103



4283039758



4294966527



4281270274



4278190080



4292628865



4292628865



4292623219



4292634511

 4292617572

 4292640158

 4292611926

 4292645804

 4292608076

 4292651451

 4292657097

 4292662743

 4292668390

 4292673524

 4292673535

Harmonies

Analogous

The Analogous color harmony consists of three colors that are next to each other on the color wheel.



4290993587



4292628865



4292434512

Triad

The Triadic color harmony groups three colors that are evenly spaced from another and form a triangle on the color wheel.



4292628865



4284845860



4278228188

Complementary

The Complementary color scheme is a pair of colors which are on the opposite of each other on the color wheel.



4292628865



4283554988

Split Complementary

Split-complementary colors differ from the complementary color scheme. The scheme consists of three colors, the original color and two neighbors of the complement color.



4278229688



4292628865



4278228818

Square

The Square scheme is like the rectangle color scheme, but the four colors are evenly spaced on the color wheel.



4292628865



4288184841



4278229894



4278225128

Rectangle

The Rectangle color scheme consists of four colors that form a rectangle on the color wheel.



4292628865



4291520563



4278229894



4278228946

Sweetspot

The Sweet Spot groups the original color and five complimentary colors.



4292628865



4294954975



4289417692



4286603884



4278190080



4286611584

Same Dimension

The Same Dimension uses a secret algorithm to generate beautiful new colors.



4292628865



4294917504



4292634193



4285424486



4289527868



4281204752

Inverse Universe

The Inverse Universe completely reimagines the original color for something new.



4292628865



4294917504



4283549660



4285424486



4289527868



4281204752

Previews

White Background



This preview shows how the Android color 4292628865 looks on a white background.

Color Contrast Check

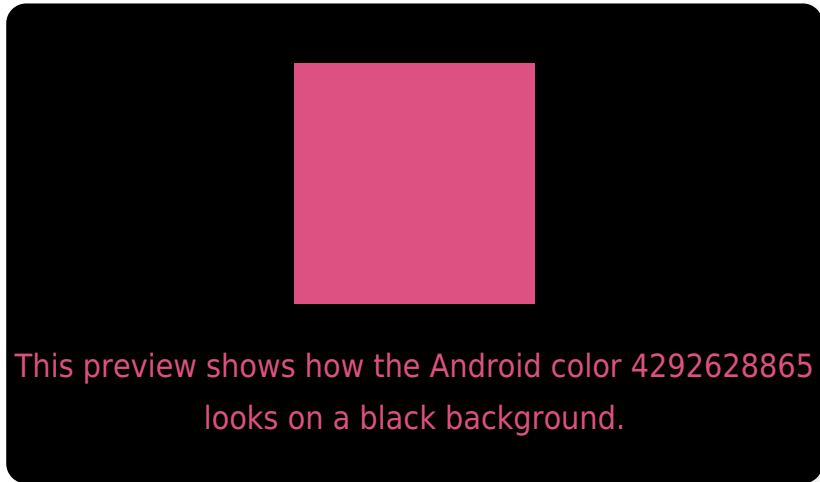
Large Text (above 18pt) WCAG AA ✓ Pass

Any Text WCAG AA ✗ Fail

Large Text (above 18pt) WCAG AAA ✗ Fail

Any Text WCAG AAA ✗ Fail

Black Background



Color Contrast Check

Large Text (above 18pt) WCAG AA ✓ Pass

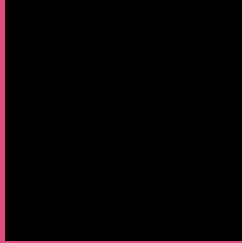
Any Text WCAG AA ✓ Pass

Large Text (above 18pt) WCAG AAA ✓ Pass

Any Text WCAG AAA × Fail

If you want to check with other color combinations, try the [Color Contrast Checker](#).

Android 4292628865 Background



This preview shows how black text looks on a background with the Android color 4292628865.



This preview shows how white text looks on a background with the Android color 4292628865.

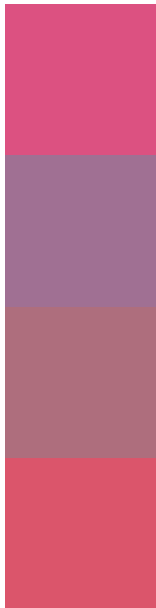
Color Blindness Simulation

Color vision deficiency is a very complex topic, and I could not describe the different causes any better than Wikipedia does, so if you want to learn more, you should check out their [article about color blindness](#).

Dichromacy



Trichromacy



Original Color
4292628865

Protanomaly
4288704659

Deuteranomaly
4289621629

Tritanomaly
4292564331

Monochromacy



Original Color
4292628865

Achromatopsia
4286611584

Achromatomaly
4288769920

CSS Examples

Text

The CSS property to change the color of the text to Android 4292628865 is called "color". The color property can be set on classes, ids or directly on the HTML element.

This example shows how text in the color `rgb(220, 81, 129)` looks like.

```
.text, #text, p{  
    color:rgb(220, 81, 129)  
}
```

If you want to add a text shadow in that color use the text-shadow property, you can generate a text shadow directly with our [CSS Text Shadow Generator](#).

Here you see how black text with a 4 pixel rgb(220, 81, 129) colored shadow looks like.

```
.shadow{ text-shadow: 4px 4px 2px rgb(220, 81, 129) }
```

Border

The CSS property to change the border of an element to Android 4292628865 is called "border". The border property can be set on classes, ids or directly on the HTML element.

This example shows the color as border, it can be applied via the CSS property "border" or "border-color".

```
.border, #border, table{ border:4px solid rgb(220, 81, 129) }
```

If only the border color should be changed use the property `border-color`.

```
.border{ border-color:rgb(220, 81, 129) }
```

If you want to add a box shadow in that color use:

Here you see how a box with a 4 pixel `rgb(220, 81, 129)` colored shadow looks like.

```
.boxshadow{ -moz-box-shadow:4px 4px 4px  
4px rgb(220, 81, 129); -webkit-box-  
shadow:4px 4px 4px 4px rgb(220, 81, 129);  
box-shadow:4px 4px 4px 4px rgb(220, 81,  
129) }
```

Background

The CSS property to change the background color of an element to Android 4292628865 is called "background". The background property can be set on classes, ids or directly on the HTML element.

```
.background, #background, body{  
background: rgb(220, 81, 129) }
```

If only the background color should be changed can be used:

```
.background{ background-color: rgb(220, 81,  
129) }
```

This example shows the color as background, it is applied via the CSS property "background".

To optimize and compress your CSS code, you can use our [online CSS compressor and optimizer](#) based on csstidy. If you want to create a linear or radial gradient as background or border, check our [CSS Gradient Generator](#).

Hey! You found this booklet interesting? Support Converting Colors with the new Membership Option!

The pro membership hides all ads, plus gives you double the colors in the color bucket, and more awesome pro features!

[Learn more, Memberships starting at \\$2.50/m!](#)

**Follow me
on Twitter!**

@ConvertingColor