

Converting Colors

Android(4292642705)

Have a look what the booklet for
Android(4292642705) contains.

| | |
|--|----|
| Android(4292642705) | 3 |
| <i>Conversions</i> | 4 |
| <i>Details</i> | 6 |
| <i>Harmonies</i> | 11 |
| <i>Previews</i> | 23 |
| <i>Color Blindness Simulation</i> | 26 |
| <i>CSS Examples</i> | 29 |

Color

Android(4292642705)

Conversions

Conversions Part 1

| Format | Color |
|-------------|----------------------------|
| Hex | DC8791 |
| RGB | 220, 135, 145 |
| RGB Percent | 86%, 53%, 57% |
| CMY | 0.1373, 0.4706, 0.4314 |
| CMYK | 0.00, 0.39, 0.34, 0.14 |
| HSL | 353°, 55%, 70% |
| HSV | 353°, 39%, 86% |
| XYZ | 43.2900, 34.5879, 31.1826 |
| YIQ | 161.5550, 47.4500, 21.1300 |

Conversions

Conversions Part 2

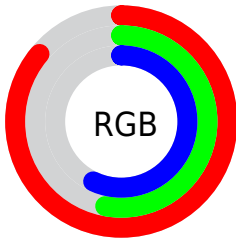
| Format | Color |
|-------------------------------------|-------------------------------|
| R _Y B | 220, 135, 145 |
| Decimal | 14452625 |
| CIE Lab | 65.43, 33.72, 8.56 |
| CIE LCh | 65, 34.791, 14.245 |
| Yxy | 34.5879, 0.3969, 0.3171 |
| Android (android.graphics.Color) | 4292642705 (0xFFDC8791) |
| YUV | 161.5550, -8.1616, 51.2563 |
| Hunter-Lab | 58.8115, 28.4703, 9.7318 |

Details

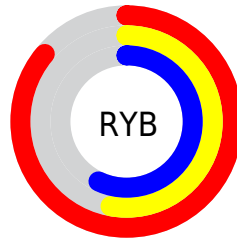
The Android color `4292642705` is a light color, and the websafe version is hex `FF9999`. A complement of this color would be `4287093970`, and the grayscale version is `4288848546`.

A 20% lighter version of the original color is `4294950343`, and `4288894047` is the 20% darker color. If you saturate the color by 10%, you get `4292637054`, and if you desaturate by 10%, it is `4292648356`.

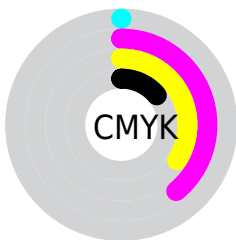
Distribution



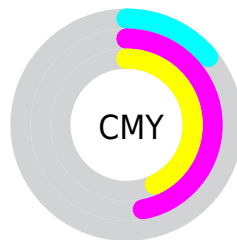
- Red (86%)
- Green (53%)
- Blue (57%)



- Red (86%)
- Yellow (53%)
- Blue (57%)



- Cyan (0%)
- Magenta (39%)
- Yellow (34%)
- Black (14%)



- Cyan (14%)
- Magenta (47%)
- Yellow (43%)

Brightness & Saturation Gradients

These gradients show how the Android color 4292642705 changes by changing the brightness by 10 percent. The first figure shows a shift by +10% for each color and the second figure -10%.

Similar to the brightness gradients but the following saturation gradients show a change of the Android color 4292642705 by changing the saturation by 10% instead.

 4292642705

 4292642705

4294967295

 4290735479

 4294950343

 4288894047

 4294957539

 4287052615

 4294964991

 4285276721

 4283500316

 4281860097

 4279959553

 4278190080

 4292642705

 4292642705

 4292637054

 4292648356

 4292631402

 4292654008

 4292625751

 4292659659

 4292620099

 4292665311

 4292614448

 4292670962

 4292608797

 4292673535

 4292608026

Harmonies

Analogous

The Analogous color harmony consists of three colors that are next to each other on the color wheel.



4291922353



4292642705



4292250997

Triad

The Triadic color harmony groups three colors that are evenly spaced from another and form a triangle on the color wheel.



4292642705



4286753393



4283869146

Complementary

The Complementary color scheme is a pair of colors which are on the opposite of each other on the color wheel.



4292642705



4287093970

Split Complementary

Split-complementary colors differ from the complementary color scheme. The scheme consists of three colors, the original color and two neighbors of the complement color.



4280724937



4292642705



4284198541

Square

The Square scheme is like the rectangle color scheme, but the four colors are evenly spaced on the color wheel.



4292642705



4289045090



4281446573



4287274459

Rectangle

The Rectangle color scheme consists of four colors that form a rectangle on the color wheel.



4292642705



4291466343



4281446573



4282690006

Sweetspot

The Sweet Spot groups the original color and five complimentary colors.



4292642705



4294959332



4291921884



4286606960



4278190080



4286611584

Same Dimension

The Same Dimension uses a secret algorithm to generate beautiful new colors.



4292642705



4294937240



4292650631



4285424484



4289527828



4281204741

Inverse Universe

The Inverse Universe completely reimagines the original color for something new.



4292642705



4294937239



4287086044



4285424484



4289527828



4281204741

Previews

White Background



This preview shows how the Android color 4292642705 looks on a white background.

Color Contrast Check

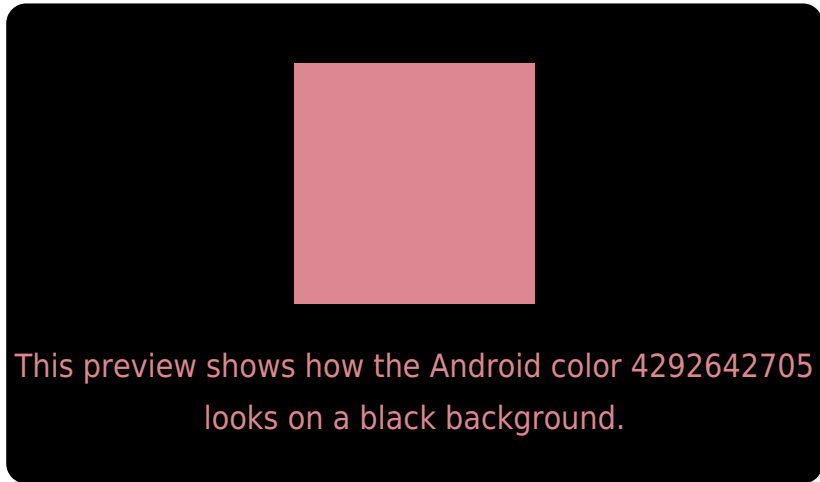
Large Text (above 18pt) WCAG AA × Fail

Any Text WCAG AA × Fail

Large Text (above 18pt) WCAG AAA × Fail

Any Text WCAG AAA × Fail

Black Background



Color Contrast Check

Large Text (above 18pt) WCAG AA ✓ Pass

Any Text WCAG AA ✓ Pass

Large Text (above 18pt) WCAG AAA ✓ Pass

Any Text WCAG AAA ✓ Pass

If you want to check with other color combinations, try the [Color Contrast Checker](#).

Android 4292642705 Background



This preview shows how black text looks on a background with the Android color 4292642705.



This preview shows how white text looks on a background with the Android color 4292642705.

Color Blindness Simulation

Color vision deficiency is a very complex topic, and I could not describe the different causes any better than Wikipedia does, so if you want to learn more, you should check out their [article about color blindness](#).

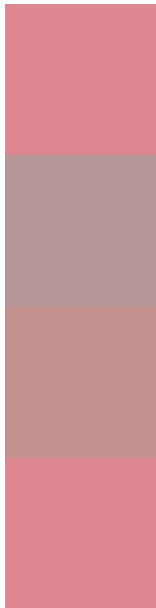
Dichromacy





Tritanopia
4292642705

Trichromacy



Original Color
4292642705

Protanomaly
4290221721

Deuteranomaly
4291007119

Tritanomaly
4292642705

Monochromacy



Original Color
4292642705

Achromatopsia
4288848546

Achromatomaly
4290222236

CSS Examples

Text

The CSS property to change the color of the text to Android 4292642705 is called "color". The color property can be set on classes, ids or directly on the HTML element.

This example shows how text in the color `rgb(220, 135, 145)` looks like.

```
.text, #text, p{  
    color:rgb(220, 135, 145)  
}
```

If you want to add a text shadow in that color use the text-shadow property, you can generate a text shadow directly with our [CSS Text Shadow Generator](#).

Here you see how black text with a 4 pixel rgb(220, 135, 145) colored shadow looks like.

```
.shadow{ text-shadow: 4px 4px 2px rgb(220, 135, 145) }
```

Border

The CSS property to change the border of an element to Android 4292642705 is called "border". The border property can be set on classes, ids or directly on the HTML element.

This example shows the color as border, it can be applied via the CSS property "border" or "border-color".

```
.border, #border, table{ border:4px solid rgb(220, 135, 145) }
```

If only the border color should be changed use the property border-color.

```
.border{ border-color:rgb(220, 135, 145) }
```

If you want to add a box shadow in that color use:

Here you see how a box with a 4 pixel rgb(220, 135, 145) colored shadow looks like.

```
.boxshadow{ -moz-box-shadow:4px 4px 4px  
4px rgb(220, 135, 145); -webkit-box-  
shadow:4px 4px 4px 4px rgb(220, 135, 145);  
box-shadow:4px 4px 4px 4px rgb(220, 135,  
145) }
```

Background

The CSS property to change the background color of an element to Android 4292642705 is called "background". The background property can be set on classes, ids or directly on the HTML element.

```
.background, #background, body{  
background: rgb(220, 135, 145) }
```

If only the background color should be changed can be used:

```
.background{ background-color: rgb(220,  
135, 145) }
```

This example shows the color as background, it is applied via the CSS property "background".

To optimize and compress your CSS code, you can use our [online CSS compressor and optimizer](#) based on csstidy. If you want to create a linear or radial gradient as background or border, check our [CSS Gradient Generator](#).

Hey! You found this booklet interesting? Support Converting Colors with the new Membership Option!

The pro membership hides all ads, plus gives you double the colors in the color bucket, and more awesome pro features!

[Learn more, Memberships starting at \\$2.50/m!](#)

**Follow me
on Twitter!**

@ConvertingColor