

Converting Colors

Android(4292651430)

Have a look what the booklet for
Android(4292651430) contains.

Android(4292651430)	3
<i>Conversions</i>	4
<i>Details</i>	6
<i>Harmonies</i>	11
<i>Previews</i>	23
<i>Color Blindness Simulation</i>	26
<i>CSS Examples</i>	29

Color

Android(4292651430)

Conversions

Conversions Part 1

Format	Color
Hex	DCA9A6
RGB	220, 169, 166
RGB Percent	86%, 66%, 65%
CMY	0.1373, 0.3373, 0.3490
CMYK	0.00, 0.23, 0.25, 0.14
HSL	3°, 44%, 76%
HSV	3°, 25%, 86%
XYZ	50.5861, 46.3448, 42.3556
YIQ	183.9070, 31.3590, 9.8790

Conversions

Conversions Part 2

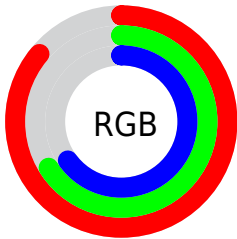
Format	Color
R _{YB}	220, 169, 166
Decimal	14461350
CIE Lab	73.77, 18.26, 8.78
CIE LCh	74, 20.263, 25.663
Yxy	46.3448, 0.3632, 0.3327
Android (android.graphics.Color)	4292651430 (0xFFDCA9A6)
YUV	183.9070, -8.8282, 31.6536
Hunter-Lab	68.0770, 13.5036, 10.7653

Details

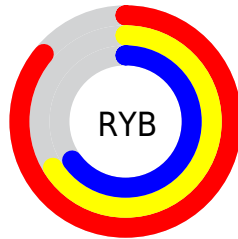
The Android color `4292651430` is a light color, and the websafe version is hex `CC9999`. A complement of this color would be `4289124828`, and the grayscale version is `4290295992`.

A 20% lighter version of the original color is `4294959325`, and `4288968050` is the 20% darker color. If you saturate the color by 10%, you get `4292646032`, and if you desaturate by 10%, it is `4292656828`.

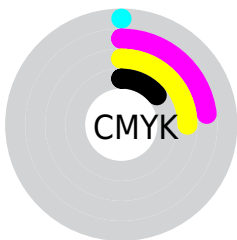
Distribution



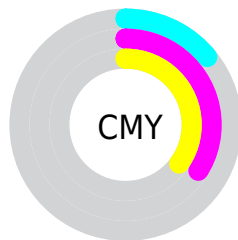
- Red (86%)
- Green (66%)
- Blue (65%)



- Red (86%)
- Yellow (66%)
- Blue (65%)



- Cyan (0%)
- Magenta (23%)
- Yellow (25%)
- Black (14%)



- Cyan (14%)
- Magenta (34%)
- Yellow (35%)

Brightness & Saturation Gradients

These gradients show how the Android color 4292651430 changes by changing the brightness by 10 percent. The first figure shows a shift by +10% for each color and the second figure -10%.

Similar to the brightness gradients but the following saturation gradients show a change of the Android color 4292651430 by changing the saturation by 10% instead.

 4292651430

 4292651430

4294967295

 4290809484

 4294959325

 4288968050

 4294966778

 4287192154

 4285482050

 4283772204

 4282193944

 4280811520

 4278190080

 4292651430

 4292651430

 4292646032

 4292656828

 4292640634

 4292662226

 4292635492

 4292667368

 4292630094

 4292672766

 4292624696

 4292673535

 4292619298

 4292614156

 4292611072

Harmonies

Analogous

The Analogous color harmony consists of three colors that are next to each other on the color wheel.



4292454585



4292651430



4292193687

Triad

The Triadic color harmony groups three colors that are evenly spaced from another and form a triangle on the color wheel.



4292651430



4288528032



4288461018

Complementary

The Complementary color scheme is a pair of colors which are on the opposite of each other on the color wheel.



4292651430



4289124828

Split Complementary

Split-complementary colors differ from the complementary color scheme. The scheme consists of three colors, the original color and two neighbors of the complement color.



4287217107



4292651430



4287348914

Square

The Square scheme is like the rectangle color scheme, but the four colors are evenly spaced on the color wheel.



4292651430



4289902996



4286824645



4290097623

Rectangle

The Rectangle color scheme consists of four colors that form a rectangle on the color wheel.



4292651430



4291604882



4286824645



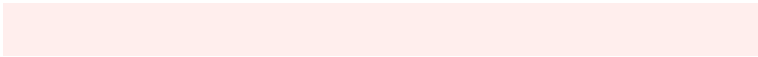
4288002777

Sweetspot

The Sweet Spot groups the original color and five complimentary colors.



4292651430



4294962925



4292650713



4286609013



4278190080



4286611584

Same Dimension

The Same Dimension uses a secret algorithm to generate beautiful new colors.



4292651430



4294949301



4292658342



4285424483



4289530368



4281205504

Inverse Universe

The Inverse Universe completely reimagines the original color for something new.



4289124828



4290116607



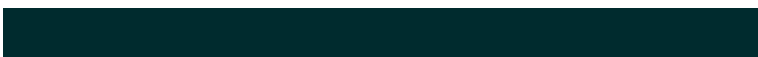
4289117916



4284706158



4278232237



4278201134

Previews

White Background



This preview shows how the Android color 4292651430 looks on a white background.

Color Contrast Check

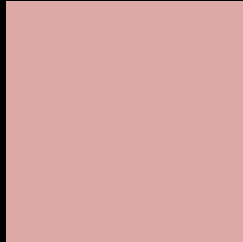
Large Text (above 18pt) WCAG AA × Fail

Any Text WCAG AA × Fail

Large Text (above 18pt) WCAG AAA × Fail

Any Text WCAG AAA × Fail

Black Background



This preview shows how the Android color 4292651430 looks on a black background.

Color Contrast Check

Large Text (above 18pt) WCAG AA ✓ Pass

Any Text WCAG AA ✓ Pass

Large Text (above 18pt) WCAG AAA ✓ Pass

Any Text WCAG AAA ✓ Pass

If you want to check with other color combinations, try the [Color Contrast Checker](#).

Android 4292651430 Background



This preview shows how black text looks on a background with the Android color 4292651430.



This preview shows how white text looks on a background with the Android color 4292651430.

Color Blindness Simulation

Color vision deficiency is a very complex topic, and I could not describe the different causes any better than Wikipedia does, so if you want to learn more, you should check out their [article about color blindness](#).

Dichromacy





Tritanopia
4292782004

Trichromacy



Original Color
4292651430

Protanomaly
4291277226

Deuteranomaly
4291997093

Tritanomaly
4292716719

Monochromacy



Original Color
4292651430

Achromatopsia
4290295992

Achromatomaly
4291146673

CSS Examples

Text

The CSS property to change the color of the text to Android 4292651430 is called "color". The color property can be set on classes, ids or directly on the HTML element.

This example shows how text in the color `rgb(220, 169, 166)` looks like.

```
.text, #text, p{  
    color:rgb(220, 169, 166)  
}
```

If you want to add a text shadow in that color use the text-shadow property, you can generate a text shadow directly with our [CSS Text Shadow Generator](#).

Here you see how black text with a 4 pixel rgb(220, 169, 166) colored shadow looks like.

```
.shadow{ text-shadow: 4px 4px 2px rgb(220, 169, 166) }
```

Border

The CSS property to change the border of an element to Android 4292651430 is called "border". The border property can be set on classes, ids or directly on the HTML element.

This example shows the color as border, it can be applied via the CSS property "border" or "border-color".

```
.border, #border, table{ border:4px solid rgb(220, 169, 166) }
```

If only the border color should be changed use the property `border-color`.

```
.border{ border-color:rgb(220, 169, 166) }
```

If you want to add a box shadow in that color use:

Here you see how a box with a 4 pixel `rgb(220, 169, 166)` colored shadow looks like.

```
.boxshadow{ -moz-box-shadow:4px 4px 4px  
4px rgb(220, 169, 166); -webkit-box-  
shadow:4px 4px 4px 4px rgb(220, 169, 166);  
box-shadow:4px 4px 4px 4px rgb(220, 169,  
166) }
```

Background

The CSS property to change the background color of an element to Android 4292651430 is called "background". The background property can be set on classes, ids or directly on the HTML element.

```
.background, #background, body{  
background: rgb(220, 169, 166) }
```

If only the background color should be changed can be used:

```
.background{ background-color: rgb(220,  
169, 166) }
```

This example shows the color as background, it is applied via the CSS property "background".

To optimize and compress your CSS code, you can use our [online CSS compressor and optimizer](#) based on csstidy. If you want to create a linear or radial gradient as background or border, check our [CSS Gradient Generator](#).

Hey! You found this booklet interesting? Support Converting Colors with the new Membership Option!

The pro membership hides all ads, plus gives you double the colors in the color bucket, and more awesome pro features!

[Learn more, Memberships starting at \\$2.50/m!](#)

**Follow me
on Twitter!**

@ConvertingColor