

Converting Colors

Android(4292651679)

Have a look what the booklet for
Android(4292651679) contains.

Android(4292651679)	3
<i>Conversions</i>	4
<i>Details</i>	6
<i>Harmonies</i>	11
<i>Previews</i>	23
<i>Color Blindness Simulation</i>	26
<i>CSS Examples</i>	29

Color

Android(4292651679)

Conversions

Conversions Part 1

Format	Color
Hex	DCAA9F
RGB	220, 170, 159
RGB Percent	86%, 67%, 62%
CMY	0.1373, 0.3333, 0.3765
CMYK	0.00, 0.23, 0.28, 0.14
HSL	11°, 47%, 74%
HSV	11°, 28%, 86%
XYZ	50.1479, 46.4683, 39.1271
YIQ	183.6960, 33.3310, 7.1790

Conversions

Conversions Part 2

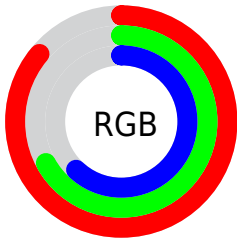
Format	Color
R _Y B	220, 172, 159
Decimal	14461599
CIE Lab	73.85, 16.75, 12.72
CIE LCh	74, 21.031, 37.219
Yxy	46.4683, 0.3694, 0.3423
Android (android.graphics.Color)	4292651679 (0xFFDCAA9F)
YUV	183.6960, -12.1751, 31.8386
Hunter-Lab	68.1677, 12.0212, 13.6859

Details

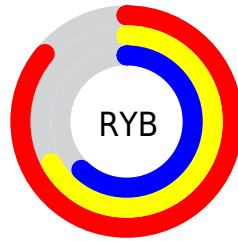
The Android color `4292651679` is a light color, and the websafe version is hex `CC9999`. A complement of this color would be `4288664028`, and the grayscale version is `4290295992`.

A 20% lighter version of the original color is `4294959574`, and `4288968300` is the 20% darker color. If you saturate the color by 10%, you get `4292647049`, and if you desaturate by 10%, it is `4292656309`.

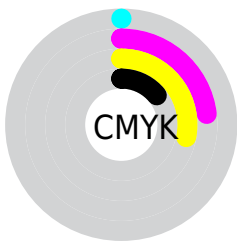
Distribution



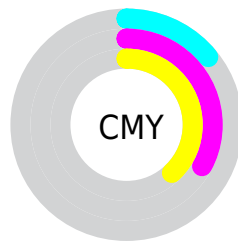
- Red (86%)
- Green (67%)
- Blue (62%)



- Red (86%)
- Yellow (67%)
- Blue (62%)



- Cyan (0%)
- Magenta (23%)
- Yellow (28%)
- Black (14%)



- Cyan (14%)
- Magenta (33%)
- Yellow (38%)

Brightness & Saturation Gradients

These gradients show how the Android color 4292651679 changes by changing the brightness by 10 percent. The first figure shows a shift by +10% for each color and the second figure -10%.

Similar to the brightness gradients but the following saturation gradients show a change of the Android color 4292651679 by changing the saturation by 10% instead.

 4292651679

 4292651679

4294967295

 4290809733

 4294959574

 4288968300

 4294967026

 4287192403

 4285482300

 4283772454

 4282128658

 4280680448

 4278190080

 4292651679

 4292651679

 4292647049

 4292656309

 4292642419

 4292660939

 4292637789

 4292665569

 4292633159

 4292670199

 4292628529

 4292673535

 4292623899

 4292619269

 4292618240

Harmonies

Analogous

The Analogous color harmony consists of three colors that are next to each other on the color wheel.



4292716721



4292651679



4291932050

Triad

The Triadic color harmony groups three colors that are evenly spaced from another and form a triangle on the color wheel.



4292651679



4287938470



4289050331

Complementary

The Complementary color scheme is a pair of colors which are on the opposite of each other on the color wheel.



4292651679



4288664028

Split Complementary

Split-complementary colors differ from the complementary color scheme. The scheme consists of three colors, the original color and two neighbors of the complement color.



4287544536



4292651679



4286890426

Square

The Square scheme is like the rectangle color scheme, but the four colors are evenly spaced on the color wheel.



4292651679



4289379222



4286693324



4290752468

Rectangle

The Rectangle color scheme consists of four colors that form a rectangle on the color wheel.



4292651679



4291212431



4286693324



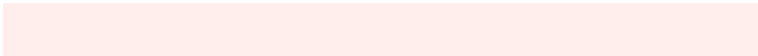
4288526556

Sweetspot

The Sweet Spot groups the original color and five complimentary colors.



4292651679



4294962923



4292648914



4286608755



4278190080



4286611584

Same Dimension

The Same Dimension uses a secret algorithm to generate beautiful new colors.



4292651679



4294949547



4292659359



4285424995



4289535744



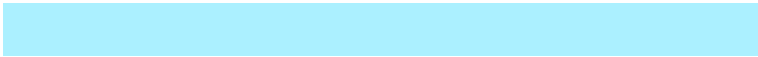
4281206784

Inverse Universe

The Inverse Universe completely reimagines the original color for something new.



4288664028



4289458431



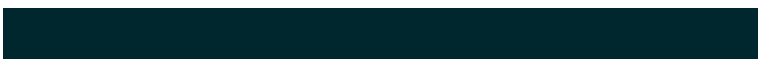
4288656348



4284705902



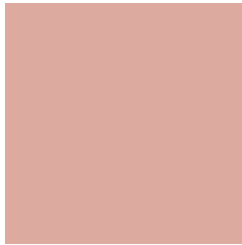
4278226605



4278199854

Previews

White Background



This preview shows how the Android color 4292651679 looks on a white background.

Color Contrast Check

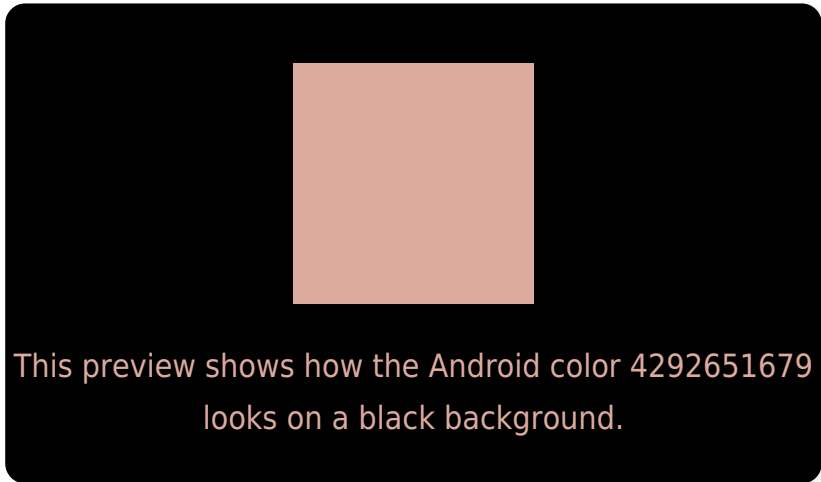
Large Text (above 18pt) WCAG AA × Fail

Any Text WCAG AA × Fail

Large Text (above 18pt) WCAG AAA × Fail

Any Text WCAG AAA × Fail

Black Background



Color Contrast Check

Large Text (above 18pt) WCAG AA ✓ Pass

Any Text WCAG AA ✓ Pass

Large Text (above 18pt) WCAG AAA ✓ Pass

Any Text WCAG AAA ✓ Pass

If you want to check with other color combinations, try the [Color Contrast Checker](#).

Android 4292651679 Background



This preview shows how black text looks on a background with the Android color 4292651679.



This preview shows how white text looks on a background with the Android color 4292651679.

Color Blindness Simulation

Color vision deficiency is a very complex topic, and I could not describe the different causes any better than Wikipedia does, so if you want to learn more, you should check out their [article about color blindness](#).

Dichromacy





Tritanopia
4292782004

Trichromacy



Original Color
4292651679

Protanomaly
4291342755

Deuteranomaly
4292128158

Tritanomaly
4292716716

Monochromacy



Original Color
4292651679

Achromatopsia
4290295992

Achromatomaly
4291146671

CSS Examples

Text

The CSS property to change the color of the text to Android 4292651679 is called "color". The color property can be set on classes, ids or directly on the HTML element.

This example shows how text in the color `rgb(220, 170, 159)` looks like.

```
.text, #text, p{  
    color:rgb(220, 170, 159)  
}
```

If you want to add a text shadow in that color use the text-shadow property, you can generate a text shadow directly with our [CSS Text Shadow Generator](#).

Here you see how black text with a 4 pixel rgb(220, 170, 159) colored shadow looks like.

```
.shadow{ text-shadow: 4px 4px 2px rgb(220, 170, 159) }
```

Border

The CSS property to change the border of an element to Android 4292651679 is called "border". The border property can be set on classes, ids or directly on the HTML element.

This example shows the color as border, it can be applied via the CSS property "border" or "border-color".

```
.border, #border, table{ border:4px solid rgb(220, 170, 159) }
```

If only the border color should be changed use the property `border-color`.

```
.border{ border-color:rgb(220, 170, 159) }
```

If you want to add a box shadow in that color use:

Here you see how a box with a 4 pixel `rgb(220, 170, 159)` colored shadow looks like.

```
.boxshadow{ -moz-box-shadow:4px 4px 4px  
4px rgb(220, 170, 159); -webkit-box-  
shadow:4px 4px 4px 4px rgb(220, 170, 159);  
box-shadow:4px 4px 4px 4px rgb(220, 170,  
159) }
```

Background

The CSS property to change the background color of an element to Android 4292651679 is called "background". The background property can be set on classes, ids or directly on the HTML element.

```
.background, #background, body{  
background: rgb(220, 170, 159) }
```

If only the background color should be changed can be used:

```
.background{ background-color: rgb(220,  
170, 159) }
```

This example shows the color as background, it is applied via the CSS property "background".

To optimize and compress your CSS code, you can use our [online CSS compressor and optimizer](#) based on csstidy. If you want to create a linear or radial gradient as background or border, check our [CSS Gradient Generator](#).

Hey! You found this booklet interesting? Support Converting Colors with the new Membership Option!

The pro membership hides all ads, plus gives you double the colors in the color bucket, and more awesome pro features!

[Learn more, Memberships starting at \\$2.50/m!](#)

**Follow me
on Twitter!**

@ConvertingColor