

Converting Colors

Android(4292651954)

Have a look what the booklet for
Android(4292651954) contains.

Android(4292651954)	3
<i>Conversions</i>	4
<i>Details</i>	6
<i>Harmonies</i>	11
<i>Previews</i>	23
<i>Color Blindness Simulation</i>	26
<i>CSS Examples</i>	29

Color

Android(4292651954)

Conversions

Conversions Part 1

Format	Color
Hex	DCABB2
RGB	220, 171, 178
RGB Percent	86%, 67%, 70%
CMY	0.1373, 0.3294, 0.3020
CMYK	0.00, 0.22, 0.19, 0.14
HSL	351°, 41%, 77%
HSV	351°, 22%, 86%
XYZ	52.1140, 47.5558, 48.5520
YIQ	186.4490, 26.9570, 12.5650

Conversions

Conversions Part 2

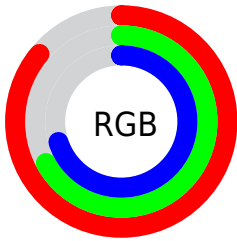
Format	Color
R _Y B	220, 171, 178
Decimal	14461874
CIE Lab	74.54, 18.96, 3.31
CIE LCh	75, 19.249, 9.914
Yxy	47.5558, 0.3516, 0.3208
Android (android.graphics.Color)	4292651954 (0xFFDCABB2)
YUV	186.4490, -4.1654, 29.4242
Hunter-Lab	68.9607, 14.2121, 6.5292

Details

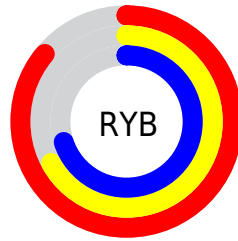
The Android color `4292651954` is a light color, and the websafe version is hex `CC9999`. A complement of this color would be `4289453269`, and the grayscale version is `4290427578`.

A 20% lighter version of the original color is `4294960106`, and `4288968573` is the 20% darker color. If you saturate the color by 10%, you get `4292646303`, and if you desaturate by 10%, it is `4292657605`.

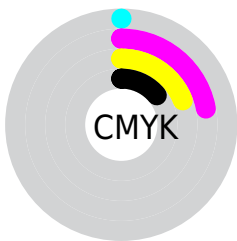
Distribution



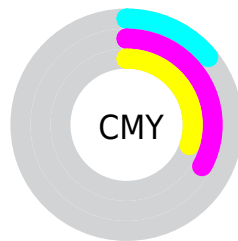
- Red (86%)
- Green (67%)
- Blue (70%)



- Red (86%)
- Yellow (67%)
- Blue (70%)



- Cyan (0%)
- Magenta (22%)
- Yellow (19%)
- Black (14%)



- Cyan (14%)
- Magenta (33%)
- Yellow (30%)

Brightness & Saturation Gradients

These gradients show how the Android color 4292651954 changes by changing the brightness by 10 percent. The first figure shows a shift by +10% for each color and the second figure -10%.

Similar to the brightness gradients but the following saturation gradients show a change of the Android color 4292651954 by changing the saturation by 10% instead.

 4292651954

 4292651954

4294967295

 4290810007

 4294960106

 4288968573

 4287192677

 4285482573

 4283838262

 4282259745

 4280811785

 4278190080

 4292651954

 4292651954

 4292646303

 4292657605

 4292640652

 4292663256

 4292635001

 4292668907

 4292629351

 4292673533

 4292623700

 4292673535

 4292618049

 4292612398

 4292608031

Harmonies

Analogous

The Analogous color harmony consists of three colors that are next to each other on the color wheel.



4292062404



4292651954



4292521377

Triad

The Triadic color harmony groups three colors that are evenly spaced from another and form a triangle on the color wheel.



4292651954



4289445276



4288003288

Complementary

The Complementary color scheme is a pair of colors which are on the opposite of each other on the color wheel.



4292651954



4289453269

Split Complementary

Split-complementary colors differ from the complementary color scheme. The scheme consists of three colors, the original color and two neighbors of the complement color.



4287217869



4292651954



4288201131

Square

The Square scheme is like the rectangle color scheme, but the four colors are evenly spaced on the color wheel.



4292651954



4290754709



4287283901



4289443802

Rectangle

The Rectangle color scheme consists of four colors that form a rectangle on the color wheel.



4292651954



4292128921



4287283901



4287676117

Sweetspot

The Sweet Spot groups the original color and five complimentary colors.



4292651954



4294962672



4292193244



4286608759



4278190080



4286611584

Same Dimension

The Same Dimension uses a secret algorithm to generate beautiful new colors.



4292651954



4294949572



4292656299



4285424484



4289527833



4281204743

Inverse Universe

The Inverse Universe completely reimagines the original color for something new.



4292651954



4294949572



4289448924



4285424484



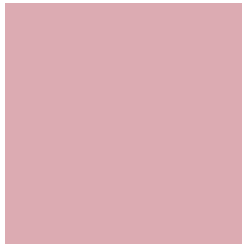
4289527833



4281204743

Previews

White Background



This preview shows how the Android color 4292651954 looks on a white background.

Color Contrast Check

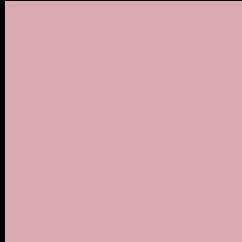
Large Text (above 18pt) WCAG AA × Fail

Any Text WCAG AA × Fail

Large Text (above 18pt) WCAG AAA × Fail

Any Text WCAG AAA × Fail

Black Background



This preview shows how the Android color 4292651954 looks on a black background.

Color Contrast Check

Large Text (above 18pt) WCAG AA ✓ Pass

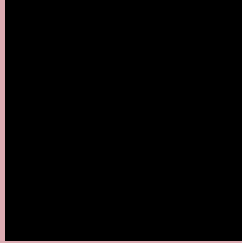
Any Text WCAG AA ✓ Pass

Large Text (above 18pt) WCAG AAA ✓ Pass

Any Text WCAG AAA ✓ Pass

If you want to check with other color combinations, try the [Color Contrast Checker](#).

Android 4292651954 Background



This preview shows how black text looks on a background with the Android color 4292651954.



This preview shows how white text looks on a background with the Android color 4292651954.

Color Blindness Simulation

Color vision deficiency is a very complex topic, and I could not describe the different causes any better than Wikipedia does, so if you want to learn more, you should check out their [article about color blindness](#).

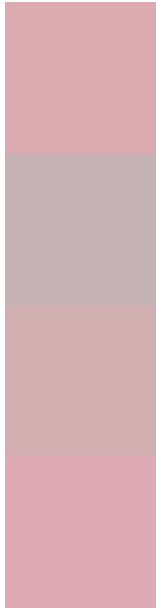
Dichromacy





Tritanopia
4292717239

Trichromacy



Original Color
4292651954

Protanomaly
4291212214

Deuteranomaly
4291997617

Tritanomaly
4292717237

Monochromacy



Original Color
4292651954

Achromatopsia
4290427578

Achromatomaly
4291212727

CSS Examples

Text

The CSS property to change the color of the text to Android 4292651954 is called "color". The color property can be set on classes, ids or directly on the HTML element.

This example shows how text in the color `rgb(220, 171, 178)` looks like.

```
.text, #text, p{  
    color:rgb(220, 171, 178)  
}
```

If you want to add a text shadow in that color use the text-shadow property, you can generate a text shadow directly with our [CSS Text Shadow Generator](#).

Here you see how black text with a 4 pixel rgb(220, 171, 178) colored shadow looks like.

```
.shadow{ text-shadow: 4px 4px 2px rgb(220, 171, 178) }
```

Border

The CSS property to change the border of an element to Android 4292651954 is called "border". The border property can be set on classes, ids or directly on the HTML element.

This example shows the color as border, it can be applied via the CSS property "border" or "border-color".

```
.border, #border, table{ border:4px solid rgb(220, 171, 178) }
```

If only the border color should be changed use the property border-color.

```
.border{ border-color:rgb(220, 171, 178) }
```

If you want to add a box shadow in that color use:

Here you see how a box with a 4 pixel rgb(220, 171, 178) colored shadow looks like.

```
.boxshadow{ -moz-box-shadow:4px 4px 4px  
4px rgb(220, 171, 178); -webkit-box-  
shadow:4px 4px 4px 4px rgb(220, 171, 178);  
box-shadow:4px 4px 4px 4px rgb(220, 171,  
178) }
```

Background

The CSS property to change the background color of an element to Android 4292651954 is called "background". The background property can be set on classes, ids or directly on the HTML element.

```
.background, #background, body{  
background: rgb(220, 171, 178) }
```

If only the background color should be changed can be used:

```
.background{ background-color: rgb(220,  
171, 178) }
```

This example shows the color as background, it is applied via the CSS property "background".

To optimize and compress your CSS code, you can use our [online CSS compressor and optimizer](#) based on csstidy. If you want to create a linear or radial gradient as background or border, check our [CSS Gradient Generator](#).

Hey! You found this booklet interesting? Support Converting Colors with the new Membership Option!

The pro membership hides all ads, plus gives you double the colors in the color bucket, and more awesome pro features!

[Learn more, Memberships starting at \\$2.50/m!](#)

**Follow me
on Twitter!**

@ConvertingColor