

Converting Colors

Android(4292652687)

Have a look what the booklet for
Android(4292652687) contains.

Android(4292652687)	3
<i>Conversions</i>	4
<i>Details</i>	6
<i>Harmonies</i>	11
<i>Previews</i>	23
<i>Color Blindness Simulation</i>	26
<i>CSS Examples</i>	29

Color

Android(4292652687)

Conversions

Conversions Part 1

Format	Color
Hex	DCAE8F
RGB	220, 174, 143
RGB Percent	86%, 68%, 56%
CMY	0.1373, 0.3176, 0.4392
CMYK	0.00, 0.21, 0.35, 0.14
HSL	24°, 52%, 71%
HSV	24°, 35%, 86%
XYZ	49.6092, 47.4709, 32.5347
YIQ	184.2200, 37.3670, 0.1110

Conversions

Conversions Part 2

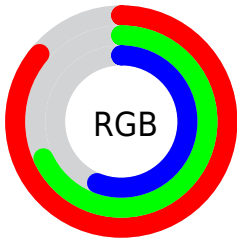
Format	Color
R _Y B	220, 195, 143
Decimal	14462607
CIE Lab	74.49, 12.53, 22.31
CIE LCh	74, 25.587, 60.679
Yxy	47.4709, 0.3827, 0.3662
Android (android.graphics.Color)	4292652687 (0xFFDCAE8F)
YUV	184.2200, -20.3215, 31.3791
Hunter-Lab	68.8991, 7.9512, 20.2322

Details

The Android color `4292652687` is a light color, and the websafe version is hex `CC9966`. A complement of this color would be `4287610332`, and the grayscale version is `4290295992`.

A 20% lighter version of the original color is `4294960837`, and `4288969308` is the 20% darker color. If you saturate the color by 10%, you get `4292649337`, and if you desaturate by 10%, it is `4292656037`.

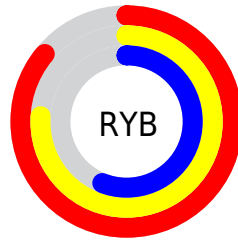
Distribution



Red (86%)

Green (68%)

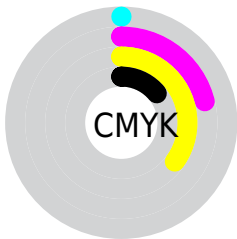
Blue (56%)



Red (86%)

Yellow (76%)

Blue (56%)

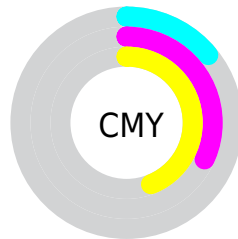


Cyan (0%)

Magenta (21%)

Yellow (35%)

Black (14%)



Cyan (14%)

Magenta (32%)

Yellow (44%)

Brightness & Saturation Gradients

These gradients show how the Android color 4292652687 changes by changing the brightness by 10 percent. The first figure shows a shift by +10% for each color and the second figure -10%.

Similar to the brightness gradients but the following saturation gradients show a change of the Android color 4292652687 by changing the saturation by 10% instead.



4292652687



4292652687

4294967295



4290745205



4294960837



4288969308



4294967265



4287127877

4294967294



4285417774



4283707929



4282129664



4280550912



4278190080



4292652687



4292652687

 4292649337

 4292656037

 4292645987

 4292659387

 4292642637

 4292662737

 4292639031

 4292666343

 4292635681

 4292669693

 4292632331

 4292673023

 4292630784

 4292673535

Harmonies

Analogous

The Analogous color harmony consists of three colors that are next to each other on the color wheel.



4293372064



4292652687



4291344008

Triad

The Triadic color harmony groups three colors that are evenly spaced from another and form a triangle on the color wheel.



4292652687



4286432695



4290556384

Complementary

The Complementary color scheme is a pair of colors which are on the opposite of each other on the color wheel.



4292652687



4287610332

Split Complementary

Split-complementary colors differ from the complementary color scheme. The scheme consists of three colors, the original color and two neighbors of the complement color.



4288395750



4292652687



4285777102

Square

The Square scheme is like the rectangle color scheme, but the four colors are evenly spaced on the color wheel.



4292652687



4287939232



4286562528



4292258511

Rectangle

The Rectangle color scheme consists of four colors that form a rectangle on the color wheel.



4292652687



4290296715



4286562528



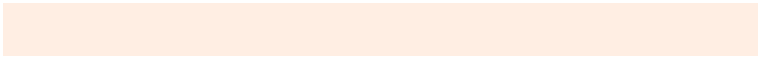
4289836259

Sweetspot

The Sweet Spot groups the original color and five complimentary colors.



4292652687



4294962915



4292644797



4286609007



4278190080



4286611584

Same Dimension

The Same Dimension uses a secret algorithm to generate beautiful new colors.



4292652687



4294950804



4292662415



4285425507



4289545728



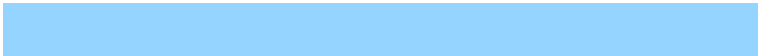
4281209344

Inverse Universe

The Inverse Universe completely reimagines the original color for something new.



4287610332



4287943935



4287600604



4284705134



4278216877



4278197038

Previews

White Background



This preview shows how the Android color 4292652687 looks on a white background.

Color Contrast Check

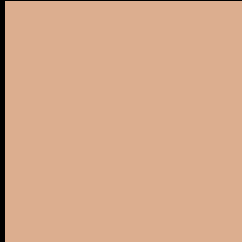
Large Text (above 18pt) WCAG AA × Fail

Any Text WCAG AA × Fail

Large Text (above 18pt) WCAG AAA × Fail

Any Text WCAG AAA × Fail

Black Background



This preview shows how the Android color 4292652687 looks on a black background.

Color Contrast Check

Large Text (above 18pt) WCAG AA ✓ Pass

Any Text WCAG AA ✓ Pass

Large Text (above 18pt) WCAG AAA ✓ Pass

Any Text WCAG AAA ✓ Pass

If you want to check with other color combinations, try the [Color Contrast Checker](#).

Android 4292652687 Background



This preview shows how black text looks on a background with the Android color 4292652687.




This preview shows how white text looks on a background with the Android color 4292652687.

Color Blindness Simulation

Color vision deficiency is a very complex topic, and I could not describe the different causes any better than Wikipedia does, so if you want to learn more, you should check out their [article about color blindness](#).

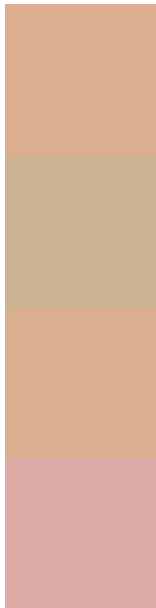
Dichromacy





Tritanopia
4292913590

Trichromacy



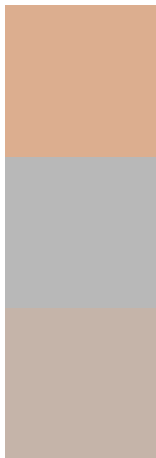
Original Color
4292652687

Protanomaly
4291605650

Deuteranomaly
4292456335

Tritanomaly
4292848552

Monochromacy



Original Color
4292652687

Achromatopsia
4290295992

Achromatomaly
4291146921

CSS Examples

Text

The CSS property to change the color of the text to Android 4292652687 is called "color". The color property can be set on classes, ids or directly on the HTML element.

This example shows how text in the color `rgb(220, 174, 143)` looks like.

```
.text, #text, p{  
    color:rgb(220, 174, 143)  
}
```

If you want to add a text shadow in that color use the text-shadow property, you can generate a text shadow directly with our [CSS Text Shadow Generator](#).

Here you see how black text with a 4 pixel rgb(220, 174, 143) colored shadow looks like.

```
.shadow{ text-shadow: 4px 4px 2px rgb(220, 174, 143) }
```

Border

The CSS property to change the border of an element to Android 4292652687 is called "border". The border property can be set on classes, ids or directly on the HTML element.

This example shows the color as border, it can be applied via the CSS property "border" or "border-color".

```
.border, #border, table{ border:4px solid rgb(220, 174, 143) }
```

If only the border color should be changed use the property `border-color`.

```
.border{ border-color:rgb(220, 174, 143) }
```

If you want to add a box shadow in that color use:

Here you see how a box with a 4 pixel `rgb(220, 174, 143)` colored shadow looks like.

```
.boxshadow{ -moz-box-shadow:4px 4px 4px  
4px rgb(220, 174, 143); -webkit-box-  
shadow:4px 4px 4px 4px rgb(220, 174, 143);  
box-shadow:4px 4px 4px 4px rgb(220, 174,  
143) }
```

Background

The CSS property to change the background color of an element to Android 4292652687 is called "background". The background property can be set on classes, ids or directly on the HTML element.

```
.background, #background, body{  
background: rgb(220, 174, 143) }
```

If only the background color should be changed can be used:

```
.background{ background-color: rgb(220,  
174, 143) }
```

This example shows the color as background, it is applied via the CSS property "background".

To optimize and compress your CSS code, you can use our [online CSS compressor and optimizer](#) based on csstidy. If you want to create a linear or radial gradient as background or border, check our [CSS Gradient Generator](#).

Hey! You found this booklet interesting? Support Converting Colors with the new Membership Option!

The pro membership hides all ads, plus gives you double the colors in the color bucket, and more awesome pro features!

[Learn more, Memberships starting at \\$2.50/m!](#)

**Follow me
on Twitter!**

@ConvertingColor