

Converting Colors

Android(4292653715)

Have a look what the booklet for
Android(4292653715) contains.

Android(4292653715)	3
<i>Conversions</i>	4
<i>Details</i>	6
<i>Harmonies</i>	11
<i>Previews</i>	23
<i>Color Blindness Simulation</i>	26
<i>CSS Examples</i>	29

Color

Android(4292653715)

Conversions

Conversions Part 1

Format	Color
Hex	DCB293
RGB	220, 178, 147
RGB Percent	86%, 70%, 58%
CMY	0.1373, 0.3020, 0.4235
CMYK	0.00, 0.19, 0.33, 0.14
HSL	25°, 51%, 72%
HSV	25°, 33%, 86%
XYZ	50.7021, 49.1630, 34.4209
YIQ	187.0240, 34.9830, -0.7370

Conversions

Conversions Part 2

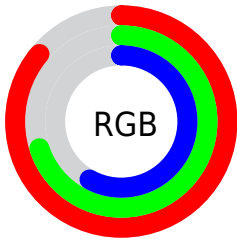
Format	Color
R_{YB}	220, 201, 147
Decimal	14463635
CIE _{Lab}	75.55, 10.88, 21.61
CIE _{LCh}	76, 24.192, 63.262
Yxy	49.1630, 0.3776, 0.3661
Android (android.graphics.Color)	4292653715 (0xFFDCB293)
YUV	187.0240, -19.7318, 28.9200
Hunter-Lab	70.1163, 6.3721, 19.9753

Details

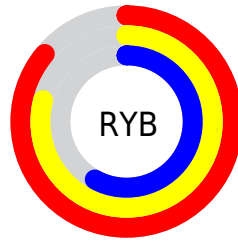
The Android color `4292653715` is a light color, and the websafe version is hex `FFCC99`. A complement of this color would be `4287872476`, and the grayscale version is `4290493371`.

A 20% lighter version of the original color is `4294961865`, and `4288970080` is the 20% darker color. If you saturate the color by 10%, you get `4292650365`, and if you desaturate by 10%, it is `4292657065`.

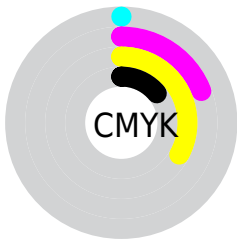
Distribution



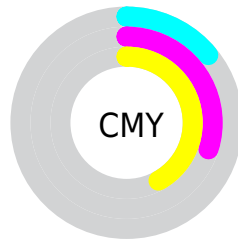
- Red (86%)
- Green (70%)
- Blue (58%)



- Red (86%)
- Yellow (79%)
- Blue (58%)



- Cyan (0%)
- Magenta (19%)
- Yellow (33%)
- Black (14%)



- Cyan (14%)
- Magenta (30%)
- Yellow (42%)

Brightness & Saturation Gradients

These gradients show how the Android color 4292653715 changes by changing the brightness by 10 percent. The first figure shows a shift by +10% for each color and the second figure -10%.

Similar to the brightness gradients but the following saturation gradients show a change of the Android color 4292653715 by changing the saturation by 10% instead.



4292653715



4292653715

4294967295



4290811769



4294961865



4288970080



4294967269



4287194184



4285418545



4283774492



4282130436



4280617728



4278190080



4292653715



4292653715

 4292650365

 4292657065

 4292647271

 4292660159

 4292643921

 4292663509

 4292640571

 4292666859

 4292637477

 4292669951

 4292634127

 4292673279

 4292631808

 4292673535

Harmonies

Analogous

The Analogous color harmony consists of three colors that are next to each other on the color wheel.



4293373091



4292653715



4291344782

Triad

The Triadic color harmony groups three colors that are evenly spaced from another and form a triangle on the color wheel.



4292653715



4286760892



4290884831

Complementary

The Complementary color scheme is a pair of colors which are on the opposite of each other on the color wheel.



4292653715



4287872476

Split Complementary

Split-complementary colors differ from the complementary color scheme. The scheme consists of three colors, the original color and two neighbors of the complement color.



4288920550



4292653715



4286301906

Square

The Square scheme is like the rectangle color scheme, but the four colors are evenly spaced on the color wheel.



4292653715



4288136613



4287152865



4292455887

Rectangle

The Rectangle color scheme consists of four colors that form a rectangle on the color wheel.



4292653715



4290297489



4287152865



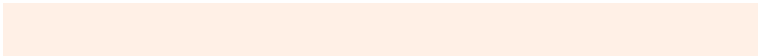
4290229987

Sweetspot

The Sweet Spot groups the original color and five complimentary colors.



4292653715



4294963430



4292645822



4286609264



4278190080



4286611584

Same Dimension

The Same Dimension uses a secret algorithm to generate beautiful new colors.



4292653715



4294952089



4292662931



4285425507



4289546752



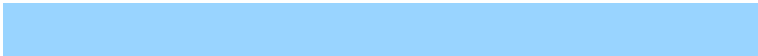
4281209600

Inverse Universe

The Inverse Universe completely reimagines the original color for something new.



4287872476



4288271615



4287863260



4284705134



4278215853



4278196782

Previews

White Background



This preview shows how the Android color 4292653715 looks on a white background.

Color Contrast Check

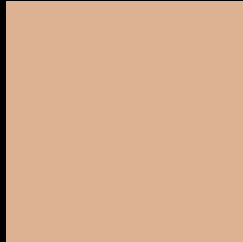
Large Text (above 18pt) WCAG AA × Fail

Any Text WCAG AA × Fail

Large Text (above 18pt) WCAG AAA × Fail

Any Text WCAG AAA × Fail

Black Background



This preview shows how the Android color 4292653715 looks on a black background.

Color Contrast Check

Large Text (above 18pt) WCAG AA ✓ Pass

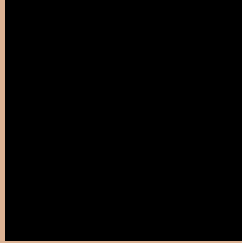
Any Text WCAG AA ✓ Pass

Large Text (above 18pt) WCAG AAA ✓ Pass

Any Text WCAG AAA ✓ Pass

If you want to check with other color combinations, try the [Color Contrast Checker](#).

Android 4292653715 Background



This preview shows how black text looks on a background with the Android color 4292653715.




This preview shows how white text looks on a background with the Android color 4292653715.

Color Blindness Simulation

Color vision deficiency is a very complex topic, and I could not describe the different causes any better than Wikipedia does, so if you want to learn more, you should check out their [article about color blindness](#).

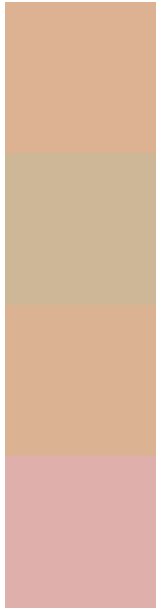
Dichromacy

	Original Color 4292653715
	Protanopia 4291213975
	Deuteranopia 4292522899



Tritanopia
4292914618

Trichromacy



Original Color
4292653715

Protanomaly
4291737494

Deuteranomaly
4292588435

Tritanomaly
4292849580

Monochromacy



Original Color
4292653715

Achromatopsia
4290493371

Achromatomaly
4291279020

CSS Examples

Text

The CSS property to change the color of the text to Android 4292653715 is called "color". The color property can be set on classes, ids or directly on the HTML element.

This example shows how text in the color `rgb(220, 178, 147)` looks like.

```
.text, #text, p{  
    color:rgb(220, 178, 147)  
}
```

If you want to add a text shadow in that color use the text-shadow property, you can generate a text shadow directly with our [CSS Text Shadow Generator](#).

Here you see how black text with a 4 pixel rgb(220, 178, 147) colored shadow looks like.

```
.shadow{ text-shadow: 4px 4px 2px rgb(220, 178, 147) }
```

Border

The CSS property to change the border of an element to Android 4292653715 is called "border". The border property can be set on classes, ids or directly on the HTML element.

This example shows the color as border, it can be applied via the CSS property "border" or "border-color".

```
.border, #border, table{ border:4px solid rgb(220, 178, 147) }
```

If only the border color should be changed use the property `border-color`.

```
.border{ border-color:rgb(220, 178, 147) }
```

If you want to add a box shadow in that color use:

Here you see how a box with a 4 pixel `rgb(220, 178, 147)` colored shadow looks like.

```
.boxshadow{ -moz-box-shadow:4px 4px 4px  
4px rgb(220, 178, 147); -webkit-box-  
shadow:4px 4px 4px 4px rgb(220, 178, 147);  
box-shadow:4px 4px 4px 4px rgb(220, 178,  
147) }
```

Background

The CSS property to change the background color of an element to Android 4292653715 is called "background". The background property can be set on classes, ids or directly on the HTML element.

```
.background, #background, body{  
background: rgb(220, 178, 147) }
```

If only the background color should be changed can be used:

```
.background{ background-color: rgb(220,  
178, 147) }
```

This example shows the color as background, it is applied via the CSS property "background".

To optimize and compress your CSS code, you can use our [online CSS compressor and optimizer](#) based on csstidy. If you want to create a linear or radial gradient as background or border, check our [CSS Gradient Generator](#).

Hey! You found this booklet interesting? Support Converting Colors with the new Membership Option!

The pro membership hides all ads, plus gives you double the colors in the color bucket, and more awesome pro features!

[Learn more, Memberships starting at \\$2.50/m!](#)

**Follow me
on Twitter!**

@ConvertingColor