

# Converting Colors

Android(4292653978)

Have a look what the booklet for  
Android(4292653978) contains.

<b>Android(4292653978)</b> .....	3
<b><i>Conversions</i></b> .....	4
<b><i>Details</i></b> .....	6
<b><i>Harmonies</i></b> .....	11
<b><i>Previews</i></b> .....	23
<b><i>Color Blindness Simulation</i></b> .....	26
<b><i>CSS Examples</i></b> .....	29

# **Color**

**Android(4292653978)**

# Conversions

## Conversions Part 1

Format	Color
Hex	DCB39A
RGB	220, 179, 154
RGB Percent	86%, 70%, 60%
CMY	0.1373, 0.2980, 0.3961
CMYK	0.00, 0.19, 0.30, 0.14
HSL	23°, 49%, 73%
HSV	23°, 30%, 86%
XYZ	51.4680, 49.7889, 37.4694
YIQ	188.4090, 32.4610, 0.9170

# Conversions

## Conversions Part 2

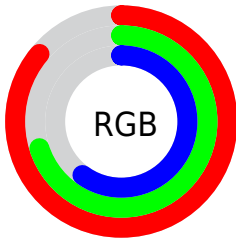
Format	Color
R <sub>Y</sub> B	220, 194, 154
Decimal	14463898
CIE Lab	75.94, 11.25, 18.36
CIE LCh	76, 21.535, 58.511
Yxy	49.7889, 0.3710, 0.3589
Android (android.graphics.Color)	4292653978 (0xFFDCB39A)
YUV	188.4090, -16.9636, 27.7053
Hunter-Lab	70.5613, 6.7173, 17.9087

# Details

The Android color `4292653978` is a light color, and the websafe version is hex `CC9999`. A complement of this color would be `4288332764`, and the grayscale version is `4290624957`.

A 20% lighter version of the original color is `4294962128`, and `4288970343` is the 20% darker color. If you saturate the color by 10%, you get `4292650372`, and if you desaturate by 10%, it is `4292657584`.

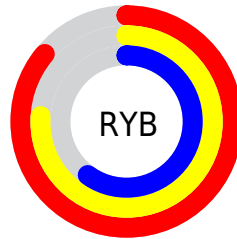
# Distribution



Red (86%)

Green (70%)

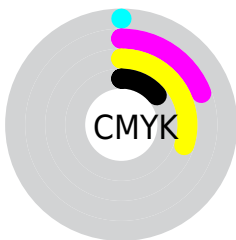
Blue (60%)



Red (86%)

Yellow (76%)

Blue (60%)

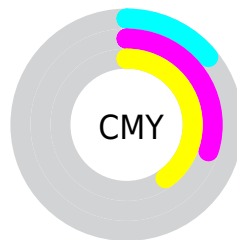


Cyan (0%)

Magenta (19%)

Yellow (30%)

Black (14%)



Cyan (14%)

Magenta (30%)

Yellow (40%)

# Brightness & Saturation Gradients

These gradients show how the Android color 4292653978 changes by changing the brightness by 10 percent. The first figure shows a shift by +10% for each color and the second figure -10%.

Similar to the brightness gradients but the following saturation gradients show a change of the Android color 4292653978 by changing the saturation by 10% instead.





4292653978



4292653978

4294967295



4290812032



4294962128



4288970343



4294967277



4287194447



4285484344



4283774498



4282196237



4280683520



4278190080



4292653978



4292653978

 4292650372

 4292657584

 4292647022

 4292660934

 4292643416

 4292664540

 4292639810

 4292668146

 4292636460

 4292671487

 4292632854

 4292673535

 4292629248

# Harmonies

## Analogous

The Analogous color harmony consists of three colors that are next to each other on the color wheel.



4293177001



4292653978



4291541396

# Triad

The Triadic color harmony groups three colors that are evenly spaced from another and form a triangle on the color wheel.



4292653978



4287416249



4290623198

# Complementary

The Complementary color scheme is a pair of colors which are on the opposite of each other on the color wheel.



4292653978



4288332764

# Split Complementary

Split-complementary colors differ from the complementary color scheme. The scheme consists of three colors, the original color and two neighbors of the complement color.



4288921058



4292653978



4286891725

# Square

The Square scheme is like the rectangle color scheme, but the four colors are evenly spaced on the color wheel.



4292653978



4288660646



4287480796



4292128976

# Rectangle

The Rectangle color scheme consists of four colors that form a rectangle on the color wheel.



4292653978



4290625173



4287480796



4290099681

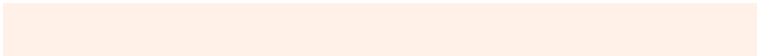


# Sweetspot

The Sweet Spot groups the original color and five complimentary colors.



4292653978



4294963688



4292647620



4286609265



4278190080



4286611584



# Same Dimension

The Same Dimension uses a secret algorithm to generate beautiful new colors.



4292653978



4294952611



4292662170



4285425507



4289544704



4281209088

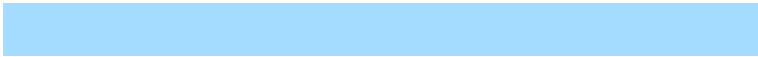


# Inverse Universe

The Inverse Universe completely reimagines the original color for something new.



4288332764



4288929023



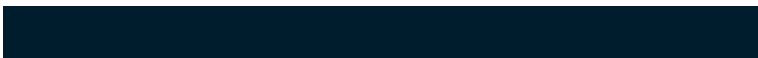
4288324572



4284705134



4278217901



4278197550



# Previews

## White Background



This preview shows how the Android color 4292653978 looks on a white background.

## Color Contrast Check

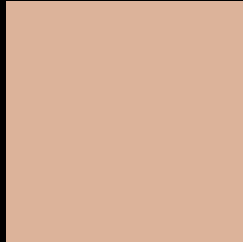
Large Text (above 18pt) WCAG AA × Fail

Any Text WCAG AA × Fail

Large Text (above 18pt) WCAG AAA × Fail

Any Text WCAG AAA × Fail

# Black Background



This preview shows how the Android color 4292653978 looks on a black background.

## Color Contrast Check

Large Text (above 18pt) WCAG AA ✓ Pass

Any Text WCAG AA ✓ Pass

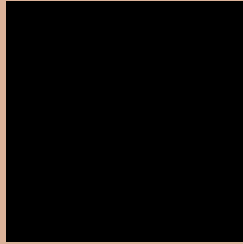
Large Text (above 18pt) WCAG AAA ✓ Pass

Any Text WCAG AAA ✓ Pass

If you want to check with other color combinations, try the [Color Contrast Checker](#).



# Android 4292653978 Background



This preview shows how black text looks on a background with the Android color 4292653978.




This preview shows how white text looks on a background with the Android color 4292653978.

# Color Blindness Simulation

Color vision deficiency is a very complex topic, and I could not describe the different causes any better than Wikipedia does, so if you want to learn more, you should check out their [article about color blindness](#).

## Dichromacy





**Tritanopia**  
4292914876

# Trichromacy



**Original Color**  
4292653978

**Protanomaly**  
4291672221

**Deuteranomaly**  
4292523162

**Tritanomaly**  
4292849840

# Monochromacy



**Original Color**  
4292653978

**Achromatopsia**  
4290559164

**Achromatomaly**  
4291344816

# CSS Examples

## Text

The CSS property to change the color of the text to Android 4292653978 is called "color". The color property can be set on classes, ids or directly on the HTML element.

This example shows how text in the color `rgb(220, 179, 154)` looks like.

```
.text, #text, p{  
    color:rgb(220, 179, 154)  
}
```

If you want to add a text shadow in that color use the text-shadow property, you can generate a text shadow directly with our [CSS Text Shadow Generator](#).

Here you see how black text with a 4 pixel rgb(220, 179, 154) colored shadow looks like.

```
.shadow{ text-shadow: 4px 4px 2px rgb(220, 179, 154) }
```

## Border

The CSS property to change the border of an element to Android 4292653978 is called "border". The border property can be set on classes, ids or directly on the HTML element.

This example shows the color as border, it can be applied via the CSS property "border" or "border-color".

```
.border, #border, table{ border:4px solid rgb(220, 179, 154) }
```

If only the border color should be changed use the property `border-color`.

```
.border{ border-color:rgb(220, 179, 154) }
```

If you want to add a box shadow in that color use:

Here you see how a box with a 4 pixel `rgb(220, 179, 154)` colored shadow looks like.

```
.boxshadow{ -moz-box-shadow:4px 4px 4px  
4px rgb(220, 179, 154); -webkit-box-  
shadow:4px 4px 4px 4px rgb(220, 179, 154);  
box-shadow:4px 4px 4px 4px rgb(220, 179,  
154) }
```

# Background

The CSS property to change the background color of an element to Android 4292653978 is called "background". The background property can be set on classes, ids or directly on the HTML element.

```
.background, #background, body{  
background: rgb(220, 179, 154) }
```

If only the background color should be changed can be used:

```
.background{ background-color: rgb(220,  
179, 154) }
```

This example shows the color as background, it is applied via the CSS property "background".

To optimize and compress your CSS code, you can use our [online CSS compressor and optimizer](#) based on csstidy. If you want to create a linear or radial gradient as background or border, check our [CSS Gradient Generator](#).



Hey! You found this booklet interesting? Support Converting Colors with the new Membership Option!

The pro membership hides all ads, plus gives you double the colors in the color bucket, and more awesome pro features!

**[Learn more, Memberships starting at \\$2.50/m!](#)**

**Follow me  
on Twitter!**

@ConvertingColor