

Converting Colors

Android(4292654268)

Have a look what the booklet for
Android(4292654268) contains.

Android(4292654268)	3
<i>Conversions</i>	4
<i>Details</i>	6
<i>Harmonies</i>	11
<i>Previews</i>	23
<i>Color Blindness Simulation</i>	26
<i>CSS Examples</i>	29

Color

Android(4292654268)

Conversions

Conversions Part 1

Format	Color
Hex	DCB4BC
RGB	220, 180, 188
RGB Percent	86%, 71%, 74%
CMY	0.1373, 0.2941, 0.2627
CMYK	0.00, 0.18, 0.15, 0.14
HSL	348°, 36%, 78%
HSV	348°, 18%, 86%
XYZ	54.9136, 51.4890, 54.6211
YIQ	192.8720, 21.2720, 10.9680

Conversions

Conversions Part 2

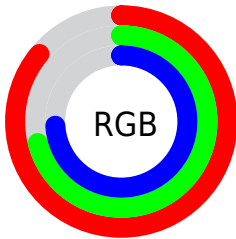
Format	Color
R _Y B	220, 180, 188
Decimal	14464188
CIE Lab	76.97, 15.69, 1.39
CIE LCh	77, 15.748, 5.049
Yxy	51.4890, 0.3410, 0.3198
Android (android.graphics.Color)	4292654268 (0xFFDCB4BC)
YUV	192.8720, -2.4019, 23.7913
Hunter-Lab	71.7558, 11.0304, 5.0971

Details

The Android color `4292654268` is a light color, and the websafe version is hex `FFCCCC`. A complement of this color would be `4290043092`, and the grayscale version is `4290888129`.

A 20% lighter version of the original color is `4294962420`, and `4289036167` is the 20% darker color. If you saturate the color by 10%, you get `4292648618`, and if you desaturate by 10%, it is `4292659918`.

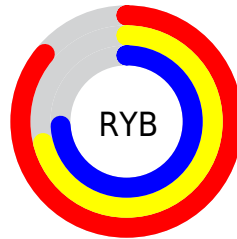
Distribution



Red (86%)

Green (71%)

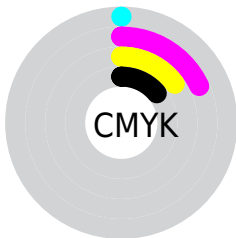
Blue (74%)



Red (86%)

Yellow (71%)

Blue (74%)

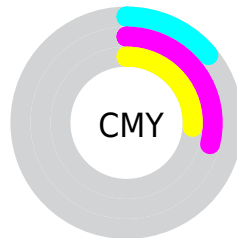


Cyan (0%)

Magenta (18%)

Yellow (15%)

Black (14%)



Cyan (14%)

Magenta (29%)

Yellow (26%)

Brightness & Saturation Gradients

These gradients show how the Android color 4292654268 changes by changing the brightness by 10 percent. The first figure shows a shift by +10% for each color and the second figure -10%.

Similar to the brightness gradients but the following saturation gradients show a change of the Android color 4292654268 by changing the saturation by 10% instead.

 4292654268

 4292654268

4294967295

 4290812321

 4294962420

 4289036167

 4287260270

 4285550165

 4283905854

 4282327336

 4280814612

 4278648832

 4278190080

 4292654268

 4292654268

 4292648618

 4292659918

 4292642969

 4292665567

 4292637319

 4292671217

 4292631670

 4292673535

 4292626020

 4292620370

 4292614721

 4292609071

 4292608044

Harmonies

Analogous

The Analogous color harmony consists of three colors that are next to each other on the color wheel.



4292064971



4292654268



4292654510

Triad

The Triadic color harmony groups three colors that are evenly spaced from another and form a triangle on the color wheel.



4292654268



4290232998



4288791512

Complementary

The Complementary color scheme is a pair of colors which are on the opposite of each other on the color wheel.



4292654268



4290043092

Split Complementary

Split-complementary colors differ from the complementary color scheme. The scheme consists of three colors, the original color and two neighbors of the complement color.



4288267982



4292654268



4289185201

Square

The Square scheme is like the rectangle color scheme, but the four colors are evenly spaced on the color wheel.



4292654268



4291280545



4288399296



4289838811

Rectangle

The Rectangle color scheme consists of four colors that form a rectangle on the color wheel.



4292654268



4292393127



4288399296



4288529621

Sweetspot

The Sweet Spot groups the original color and five complimentary colors.



4292654268



4294963957



4292130012



4286609529



4278190080



4286611584

Same Dimension

The Same Dimension uses a secret algorithm to generate beautiful new colors.



4292654268



4294952914



4292657332



4285424485



4289527843



4281204745

Inverse Universe

The Inverse Universe completely reimagines the original color for something new.



4292654268



4294952914



4290040028



4285424485



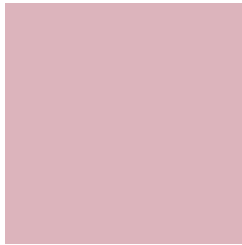
4289527843



4281204745

Previews

White Background



This preview shows how the Android color 4292654268 looks on a white background.

Color Contrast Check

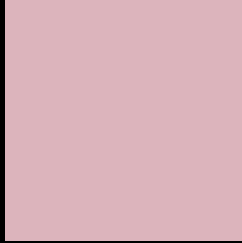
Large Text (above 18pt) WCAG AA × Fail

Any Text WCAG AA × Fail

Large Text (above 18pt) WCAG AAA × Fail

Any Text WCAG AAA × Fail

Black Background



This preview shows how the Android color 4292654268 looks on a black background.

Color Contrast Check

Large Text (above 18pt) WCAG AA ✓ Pass

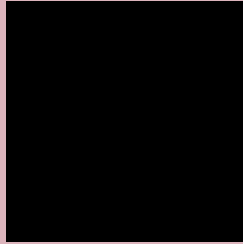
Any Text WCAG AA ✓ Pass

Large Text (above 18pt) WCAG AAA ✓ Pass

Any Text WCAG AAA ✓ Pass

If you want to check with other color combinations, try the [Color Contrast Checker](#).

Android 4292654268 Background



This preview shows how black text looks on a background with the Android color 4292654268.



This preview shows how white text looks on a background with the Android color 4292654268.

Color Blindness Simulation

Color vision deficiency is a very complex topic, and I could not describe the different causes any better than Wikipedia does, so if you want to learn more, you should check out their [article about color blindness](#).

Dichromacy



Original Color
4292654268

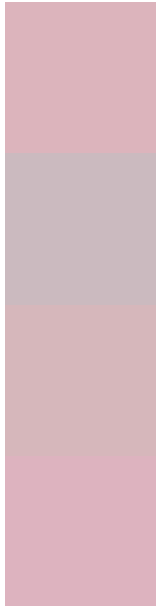
Protanopia
4290887105

Deuteranopia
4291999931



Tritanopia
4292719553

Trichromacy



Original Color
4292654268

Protanomaly
4291541695

Deuteranomaly
4292261819

Tritanomaly
4292719551

Monochromacy



Original Color
4292654268

Achromatopsia
4290888129

Achromatomaly
4291542207

CSS Examples

Text

The CSS property to change the color of the text to Android 4292654268 is called "color". The color property can be set on classes, ids or directly on the HTML element.

This example shows how text in the color `rgb(220, 180, 188)` looks like.

```
.text, #text, p{  
    color:rgb(220, 180, 188)  
}
```

If you want to add a text shadow in that color use the text-shadow property, you can generate a text shadow directly with our [CSS Text Shadow Generator](#).

Here you see how black text with a 4 pixel rgb(220, 180, 188) colored shadow looks like.

```
.shadow{ text-shadow: 4px 4px 2px rgb(220, 180, 188) }
```

Border

The CSS property to change the border of an element to Android 4292654268 is called "border". The border property can be set on classes, ids or directly on the HTML element.

This example shows the color as border, it can be applied via the CSS property "border" or "border-color".

```
.border, #border, table{ border:4px solid rgb(220, 180, 188) }
```

If only the border color should be changed use the property `border-color`.

```
.border{ border-color:rgb(220, 180, 188) }
```

If you want to add a box shadow in that color use:

Here you see how a box with a 4 pixel `rgb(220, 180, 188)` colored shadow looks like.

```
.boxshadow{ -moz-box-shadow:4px 4px 4px  
4px rgb(220, 180, 188); -webkit-box-  
shadow:4px 4px 4px 4px rgb(220, 180, 188);  
box-shadow:4px 4px 4px 4px rgb(220, 180,  
188) }
```

Background

The CSS property to change the background color of an element to Android 4292654268 is called "background". The background property can be set on classes, ids or directly on the HTML element.

```
.background, #background, body{  
background: rgb(220, 180, 188) }
```

If only the background color should be changed can be used:

```
.background{ background-color: rgb(220,  
180, 188) }
```

This example shows the color as background, it is applied via the CSS property "background".

To optimize and compress your CSS code, you can use our [online CSS compressor and optimizer](#) based on csstidy. If you want to create a linear or radial gradient as background or border, check our [CSS Gradient Generator](#).

Hey! You found this booklet interesting? Support Converting Colors with the new Membership Option!

The pro membership hides all ads, plus gives you double the colors in the color bucket, and more awesome pro features!

[Learn more, Memberships starting at \\$2.50/m!](#)

**Follow me
on Twitter!**

@ConvertingColor