

Converting Colors

Android(4292656798)

Have a look what the booklet for
Android(4292656798) contains.

Android(4292656798)	3
<i>Conversions</i>	4
<i>Details</i>	6
<i>Harmonies</i>	11
<i>Previews</i>	23
<i>Color Blindness Simulation</i>	26
<i>CSS Examples</i>	29

Color

Android(4292656798)

Conversions

Conversions Part 1

Format	Color
Hex	DCBE9E
RGB	220, 190, 158
RGB Percent	86%, 75%, 62%
CMY	0.1373, 0.2549, 0.3804
CMYK	0.00, 0.14, 0.28, 0.14
HSL	31°, 47%, 74%
HSV	31°, 28%, 86%
XYZ	54.1002, 54.5112, 40.0181
YIQ	195.3220, 28.1520, -3.5920

Conversions

Conversions Part 2

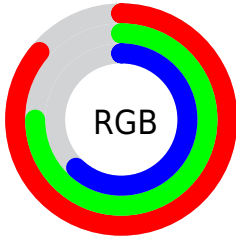
Format	Color
R _Y B	216, 220, 158
Decimal	14466718
CIE Lab	78.76, 5.93, 20.12
CIE LCh	79, 20.972, 73.579
Yxy	54.5112, 0.3640, 0.3668
Android (android.graphics.Color)	4292656798 (0xFFDCBE9E)
YUV	195.3220, -18.3997, 21.6426
Hunter-Lab	73.8317, 1.5905, 19.5460

Details

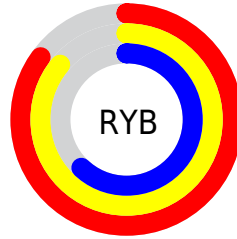
The Android color `4292656798` is a light color, and the websafe version is hex `FFCC99`. A complement of this color would be `4288593116`, and the grayscale version is `4291019715`.

A 20% lighter version of the original color is `4294964949`, and `4288973162` is the 20% darker color. If you saturate the color by 10%, you get `4292653960`, and if you desaturate by 10%, it is `4292659636`.

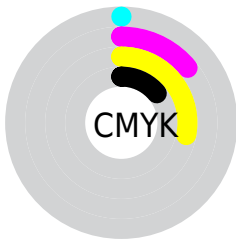
Distribution



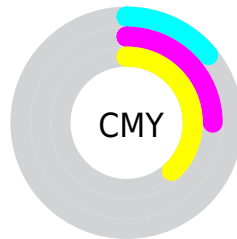
- Red (86%)
- Green (75%)
- Blue (62%)



- Red (85%)
- Yellow (86%)
- Blue (62%)



- Cyan (0%)
- Magenta (14%)
- Yellow (28%)
- Black (14%)



- Cyan (14%)
- Magenta (25%)
- Yellow (38%)

Brightness & Saturation Gradients

These gradients show how the Android color 4292656798 changes by changing the brightness by 10 percent. The first figure shows a shift by +10% for each color and the second figure -10%.

Similar to the brightness gradients but the following saturation gradients show a change of the Android color 4292656798 by changing the saturation by 10% instead.

 4292656798

 4292656798

4294967295

 4290814852

 4294964949

 4288973162

 4294967281

 4287197010

 4285486907

 4283842597

 4282264080

 4280751360

 4278321152

 4278190080

 4292656798

 4292656798

 4292653960

 4292659636

 4292651378

 4292662218

 4292648540

 4292665056

 4292645702

 4292667894

 4292643120

 4292670463

 4292640282

 4292673279

 4292637444

 4292673535

 4292637184

Harmonies

Analogous

The Analogous color harmony consists of three colors that are next to each other on the color wheel.



4293507241



4292656798



4291413149

Triad

The Triadic color harmony groups three colors that are evenly spaced from another and form a triangle on the color wheel.



4292656798



4287680203



4291935199

Complementary

The Complementary color scheme is a pair of colors which are on the opposite of each other on the color wheel.



4292656798



4288593116

Split Complementary

Split-complementary colors differ from the complementary color scheme. The scheme consists of three colors, the original color and two neighbors of the complement color.



4290298601



4292656798



4287679709

Square

The Square scheme is like the rectangle color scheme, but the four colors are evenly spaced on the color wheel.



4292656798



4288597431



4288727272



4293179086

Rectangle

The Rectangle color scheme consists of four colors that form a rectangle on the color wheel.



4292656798



4290431138



4288727272



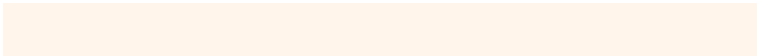
4291411427

Sweetspot

The Sweet Spot groups the original color and five complimentary colors.



4292656798



4294964715



4292648637



4286609779



4278190080



4286611584

Same Dimension

The Same Dimension uses a secret algorithm to generate beautiful new colors.



4292656798



4294956456



4292664478



4285425763



4289550592



4281210880

Inverse Universe

The Inverse Universe completely reimagines the original color for something new.



4288593116



4289254143



4288585436



4284704878



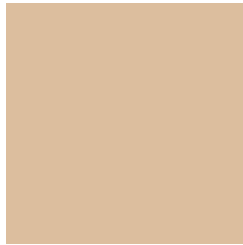
4278211757



4278195758

Previews

White Background



This preview shows how the Android color 4292656798 looks on a white background.

Color Contrast Check

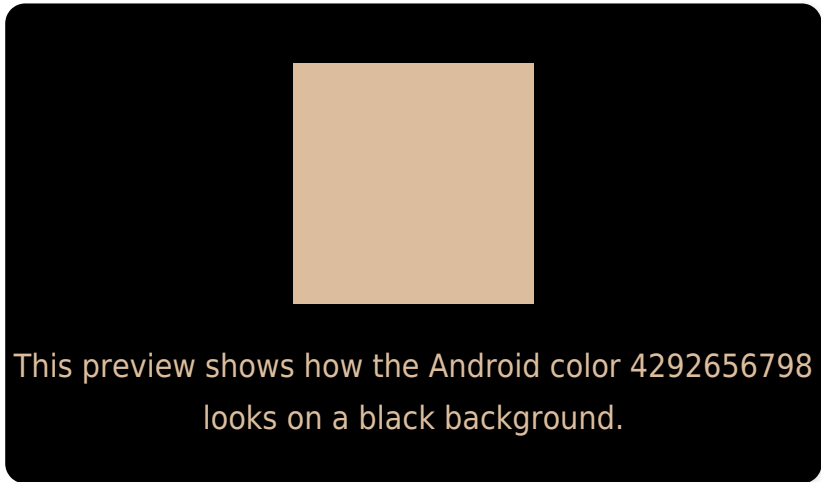
Large Text (above 18pt) WCAG AA × Fail

Any Text WCAG AA × Fail

Large Text (above 18pt) WCAG AAA × Fail

Any Text WCAG AAA × Fail

Black Background



Color Contrast Check

Large Text (above 18pt) WCAG AA ✓ Pass

Any Text WCAG AA ✓ Pass

Large Text (above 18pt) WCAG AAA ✓ Pass

Any Text WCAG AAA ✓ Pass

If you want to check with other color combinations, try the [Color Contrast Checker](#).

Android 4292656798 Background



This preview shows how black text looks on a background with the Android color 4292656798.



This preview shows how white text looks on a background with the Android color 4292656798.

Color Blindness Simulation

Color vision deficiency is a very complex topic, and I could not describe the different causes any better than Wikipedia does, so if you want to learn more, you should check out their [article about color blindness](#).

Dichromacy



Original Color
4292656798

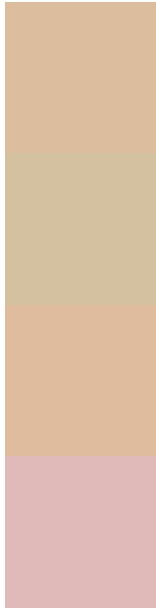
Protanopia
4291740576

Deuteranopia
4293114783



Tritanopia
4292982983

Trichromacy



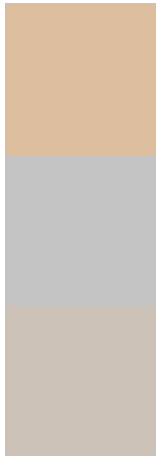
Original Color
4292656798

Protanomaly
4292067743

Deuteranomaly
4292918431

Tritanomaly
4292852408

Monochromacy



Original Color
4292656798

Achromatopsia
4291019715

Achromatomaly
4291609014

CSS Examples

Text

The CSS property to change the color of the text to Android 4292656798 is called "color". The color property can be set on classes, ids or directly on the HTML element.

This example shows how text in the color `rgb(220, 190, 158)` looks like.

```
.text, #text, p{  
    color:rgb(220, 190, 158)  
}
```

If you want to add a text shadow in that color use the text-shadow property, you can generate a text shadow directly with our [CSS Text Shadow Generator](#).

Here you see how black text with a 4 pixel rgb(220, 190, 158) colored shadow looks like.

```
.shadow{ text-shadow: 4px 4px 2px rgb(220, 190, 158) }
```

Border

The CSS property to change the border of an element to Android 4292656798 is called "border". The border property can be set on classes, ids or directly on the HTML element.

This example shows the color as border, it can be applied via the CSS property "border" or "border-color".

```
.border, #border, table{ border:4px solid rgb(220, 190, 158) }
```

If only the border color should be changed use the property `border-color`.

```
.border{ border-color:rgb(220, 190, 158) }
```

If you want to add a box shadow in that color use:

Here you see how a box with a 4 pixel `rgb(220, 190, 158)` colored shadow looks like.

```
.boxshadow{ -moz-box-shadow:4px 4px 4px 4px rgb(220, 190, 158); -webkit-box-shadow:4px 4px 4px 4px rgb(220, 190, 158); box-shadow:4px 4px 4px 4px rgb(220, 190, 158) }
```

Background

The CSS property to change the background color of an element to Android 4292656798 is called "background". The background property can be set on classes, ids or directly on the HTML element.

```
.background, #background, body{  
background: rgb(220, 190, 158) }
```

If only the background color should be changed can be used:

```
.background{ background-color: rgb(220,  
190, 158) }
```

This example shows the color as background, it is applied via the CSS property "background".

To optimize and compress your CSS code, you can use our [online CSS compressor and optimizer](#) based on csstidy. If you want to create a linear or radial gradient as background or border, check our [CSS Gradient Generator](#).

Hey! You found this booklet interesting? Support Converting Colors with the new Membership Option!

The pro membership hides all ads, plus gives you double the colors in the color bucket, and more awesome pro features!

[Learn more, Memberships starting at \\$2.50/m!](#)

**Follow me
on Twitter!**

@ConvertingColor