

Converting Colors

Android(4292660934)

Have a look what the booklet for
Android(4292660934) contains.

Android(4292660934)	3
<i>Conversions</i>	4
<i>Details</i>	6
<i>Harmonies</i>	11
<i>Previews</i>	23
<i>Color Blindness Simulation</i>	26
<i>CSS Examples</i>	29

Color

Android(4292660934)

Conversions

Conversions Part 1

Format	Color
Hex	DCCEC6
RGB	220, 206, 198
RGB Percent	86%, 81%, 78%
CMY	0.1373, 0.1922, 0.2235
CMYK	0.00, 0.06, 0.10, 0.14
HSL	22°, 24%, 82%
HSV	22°, 10%, 86%
XYZ	61.7795, 63.4355, 62.4142
YIQ	209.2740, 10.9120, 0.4800

Conversions

Conversions Part 2

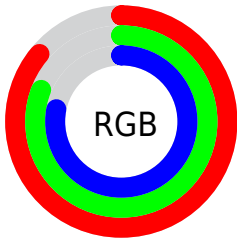
Format	Color
R _Y B	220, 211, 198
Decimal	14470854
CIE Lab	83.67, 3.50, 5.71
CIE LCh	84, 6.696, 58.476
Yxy	63.4355, 0.3293, 0.3381
Android (android.graphics.Color)	4292660934 (0xFFDCCEC6)
YUV	209.2740, -5.5581, 9.4067
Hunter-Lab	79.6464, -0.9236, 9.2904

Details

The Android color `4292660934` is a light color, and the websafe version is hex `CCCCCC`. A complement of this color would be `4291220700`, and the grayscale version is `4291940817`.

A 20% lighter version of the original color is `4294967295`, and `4289042576` is the 20% darker color. If you saturate the color by 10%, you get `4292657328`, and if you desaturate by 10%, it is `4292664540`.

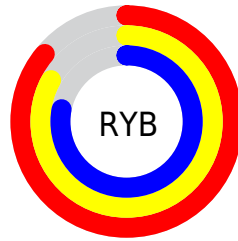
Distribution



Red (86%)

Green (81%)

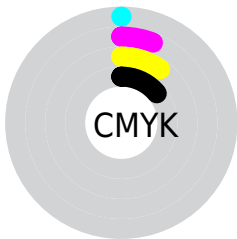
Blue (78%)



Red (86%)

Yellow (83%)

Blue (78%)

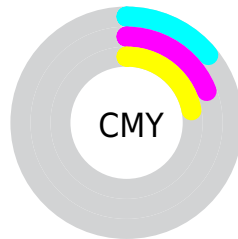


Cyan (0%)

Magenta (6%)

Yellow (10%)

Black (14%)



Cyan (14%)

Magenta (19%)

Yellow (22%)

Brightness & Saturation Gradients

These gradients show how the Android color 4292660934 changes by changing the brightness by 10 percent. The first figure shows a shift by +10% for each color and the second figure -10%.

Similar to the brightness gradients but the following saturation gradients show a change of the Android color 4292660934 by changing the saturation by 10% instead.

 4292660934

 4292660934

4294967295

 4290818987

 4289042576

 4287331959

 4285621598

 4283977030

 4282463792

 4281016603

 4279699968

 4278190080

 4292660934

 4292660934

 4292657328

 4292664540

 4292653722

 4292668146

 4292650116

 4292671743

 4292646510

 4292673535

 4292642904

 4292639298

 4292635692

 4292632086

 4292628480

Harmonies

Analogous

The Analogous color harmony consists of three colors that are next to each other on the color wheel.



4292857291



4292660934



4292268228

Triad

The Triadic color harmony groups three colors that are evenly spaced from another and form a triangle on the color wheel.



4292660934



4291024080



4292005852

Complementary

The Complementary color scheme is a pair of colors which are on the opposite of each other on the color wheel.



4292660934



4291220700

Split Complementary

Split-complementary colors differ from the complementary color scheme. The scheme consists of three colors, the original color and two neighbors of the complement color.



4291482077



4292660934



4290893014

Square

The Square scheme is like the rectangle color scheme, but the four colors are evenly spaced on the color wheel.



4292660934



4291351754



4291089371



4292464087

Rectangle

The Rectangle color scheme consists of four colors that form a rectangle on the color wheel.



4292660934



4292006341



4291089371



4291809500

Sweetspot

The Sweet Spot groups the original color and five complimentary colors.



4292660934



4294966007



4292658900



4286610554



4278190080



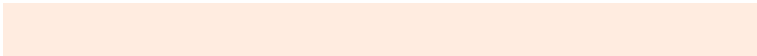
4286611584

Same Dimension

The Same Dimension uses a secret algorithm to generate beautiful new colors.



4292660934



4294962400



4292663750



4285425507



4289543936



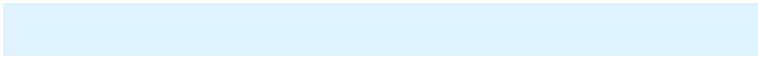
4281209088

Inverse Universe

The Inverse Universe completely reimagines the original color for something new.



4291220700



4292932863



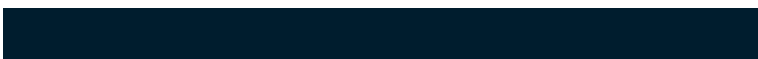
4291217884



4284705390



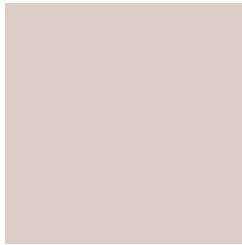
4278218413



4278197550

Previews

White Background



This preview shows how the Android color 4292660934 looks on a white background.

Color Contrast Check

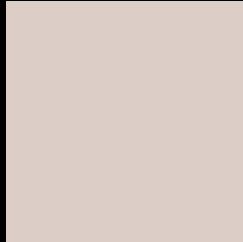
Large Text (above 18pt) WCAG AA × Fail

Any Text WCAG AA × Fail

Large Text (above 18pt) WCAG AAA × Fail

Any Text WCAG AAA × Fail

Black Background



This preview shows how the Android color 4292660934 looks on a black background.

Color Contrast Check

Large Text (above 18pt) WCAG AA ✓ Pass

Any Text WCAG AA ✓ Pass

Large Text (above 18pt) WCAG AAA ✓ Pass

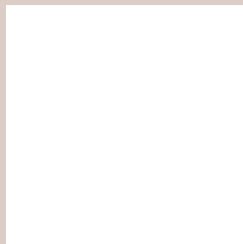
Any Text WCAG AAA ✓ Pass

If you want to check with other color combinations, try the [Color Contrast Checker](#).

Android 4292660934 Background



This preview shows how black text looks on a background with the Android color 4292660934.




This preview shows how white text looks on a background with the Android color 4292660934.

Color Blindness Simulation

Color vision deficiency is a very complex topic, and I could not describe the different causes any better than Wikipedia does, so if you want to learn more, you should check out their [article about color blindness](#).

Dichromacy





Tritanopia
4292856795

Trichromacy



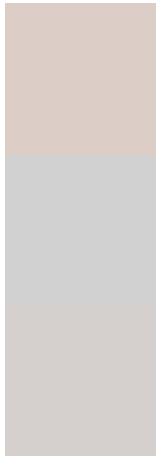
Original Color
4292660934

Protanomaly
4292464583

Deuteranomaly
4293184455

Tritanomaly
4292791507

Monochromacy



Original Color
4292660934

Achromatopsia
4291940817

Achromatomaly
4292202701

CSS Examples

Text

The CSS property to change the color of the text to Android 4292660934 is called "color". The color property can be set on classes, ids or directly on the HTML element.

This example shows how text in the color `rgb(220, 206, 198)` looks like.

```
.text, #text, p{  
    color:rgb(220, 206, 198)  
}
```

If you want to add a text shadow in that color use the text-shadow property, you can generate a text shadow directly with our [CSS Text Shadow Generator](#).

Here you see how black text with a 4 pixel rgb(220, 206, 198) colored shadow looks like.

```
.shadow{ text-shadow: 4px 4px 2px rgb(220, 206, 198) }
```

Border

The CSS property to change the border of an element to Android 4292660934 is called "border". The border property can be set on classes, ids or directly on the HTML element.

This example shows the color as border, it can be applied via the CSS property "border" or "border-color".

```
.border, #border, table{ border:4px solid rgb(220, 206, 198) }
```

If only the border color should be changed use the property `border-color`.

```
.border{ border-color:rgb(220, 206, 198) }
```

If you want to add a box shadow in that color use:

Here you see how a box with a 4 pixel `rgb(220, 206, 198)` colored shadow looks like.

```
.boxshadow{ -moz-box-shadow:4px 4px 4px 4px rgb(220, 206, 198); -webkit-box-shadow:4px 4px 4px 4px rgb(220, 206, 198); box-shadow:4px 4px 4px 4px rgb(220, 206, 198) }
```

Background

The CSS property to change the background color of an element to Android 4292660934 is called "background". The background property can be set on classes, ids or directly on the HTML element.

```
.background, #background, body{  
background: rgb(220, 206, 198) }
```

If only the background color should be changed can be used:

```
.background{ background-color: rgb(220,  
206, 198) }
```

This example shows the color as background, it is applied via the CSS property "background".

To optimize and compress your CSS code, you can use our [online CSS compressor and optimizer](#) based on csstidy. If you want to create a linear or radial gradient as background or border, check our [CSS Gradient Generator](#).

Hey! You found this booklet interesting? Support Converting Colors with the new Membership Option!

The pro membership hides all ads, plus gives you double the colors in the color bucket, and more awesome pro features!

[Learn more, Memberships starting at \\$2.50/m!](#)

**Follow me
on Twitter!**

@ConvertingColor