

# Converting Colors

Android(4292686186)

Have a look what the booklet for  
Android(4292686186) contains.

|  |    |
|--|----|
| <b>Android(4292686186)</b> .....               | 3  |
| <b><i>Conversions</i></b> .....                | 4  |
| <b><i>Details</i></b> .....                    | 6  |
| <b><i>Harmonies</i></b> .....                  | 11 |
| <b><i>Previews</i></b> .....                   | 23 |
| <b><i>Color Blindness Simulation</i></b> ..... | 26 |
| <b><i>CSS Examples</i></b> .....               | 29 |

**Color**

**Android(4292686186)**

# Conversions

## Conversions Part 1

| <b>Format</b> | <b>Color</b>               |
|---------------|----------------------------|
| Hex           | DD316A                     |
| RGB           | 221, 49, 106               |
| RGB Percent   | 87%, 19%, 42%              |
| CMY           | 0.1333, 0.8078, 0.5843     |
| CMYK          | 0.00, 0.78, 0.52, 0.13     |
| HSL           | 340°, 72%, 53%             |
| HSV           | 340°, 78%, 87%             |
| XYZ           | 33.5186, 18.6094, 15.4610  |
| YIQ           | 106.9260, 84.2150, 54.1910 |

# Conversions

## Conversions Part 2

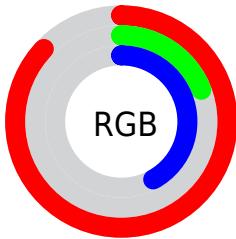
| <b>Format</b>                       | <b>Color</b>                   |
|-------------------------------------|--------------------------------|
| <b>R<sub>YB</sub></b>               | 221, 49, 106                   |
| Decimal                             | 14496106                       |
| CIE <sub>Lab</sub>                  | 50.23, 67.79, 9.84             |
| CIE <sub>LCh</sub>                  | 50, 68.503, 8.262              |
| Yxy                                 | 18.6094, 0.4959,<br>0.2753     |
| Android<br>(android.graphics.Color) | 4292686186<br>(0xFFDD316A)     |
| YUV                                 | 106.9260, -0.4565,<br>100.0429 |
| Hunter-Lab                          | 43.1386, 63.2017,<br>8.9473    |

# Details

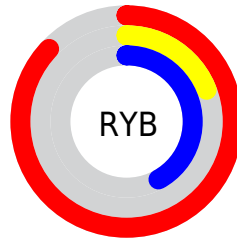
The Android color **4292686186** is a dark color, and the websafe version is hex **CC3366**. The color can be described as dark muted rose. A complement of this color would be **4281458084**, and the grayscale version is **4285229931**.

A 20% lighter version of the original color is **4294930333**, and **4288610363** is the 20% darker color. If you saturate the color by 10%, you get **4292680539**, and if you desaturate by 10%, it is **4292691833**.

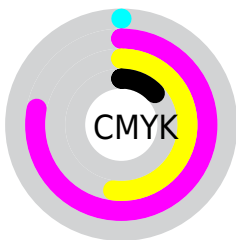
# Distribution



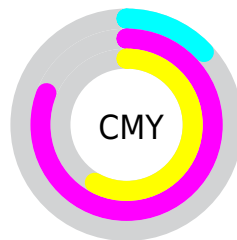
- Red (87%)
- Green (19%)
- Blue (42%)



- Red (87%)
- Yellow (19%)
- Blue (42%)



- Cyan (0%)
- Magenta (78%)
- Yellow (52%)
- Black (13%)



- Cyan (13%)
- Magenta (81%)
- Yellow (58%)

# Brightness & Saturation Gradients

These gradients show how the Android color 4292686186 changes by changing the brightness by 10 percent. The first figure shows a shift by +10% for each color and the second figure -10%.

Similar to the brightness gradients but the following saturation gradients show a change of the Android color 4292686186 by changing the saturation by 10% instead.



 4292686186

 4292686186

4294967295

 4290642002

 4294930333

 4288610363

 4294938040

 4286644262

 4294945491

 4284678162

 4294952944

 4282908675

 4294960639

 4280745985

 4278190080

 4292686186

 4292686186

 4292680539

 4292691833

 4292674892

 4292697480

 4292673609

 4292703126

 4292708773

 4292714420

 4292720323

 4292725969

 4292731616

 4292737263

# Harmonies

## Analogous

The Analogous color harmony consists of three colors that are next to each other on the color wheel.



4291313828



4292686186



4292036402

# Triad

The Triadic color harmony groups three colors that are evenly spaced from another and form a triangle on the color wheel.



4292686186



4282484736



4278225380

# Complementary

The Complementary color scheme is a pair of colors which are on the opposite of each other on the color wheel.



4292686186



4281458084

# Split Complementary

Split-complementary colors differ from the complementary color scheme. The scheme consists of three colors, the original color and two neighbors of the complement color.



4278227135



4292686186



4278226761

# Square

The Square scheme is like the rectangle color scheme, but the four colors are evenly spaced on the color wheel.



4292686186



4286740992



4278227335



4278221548

# Rectangle

The Rectangle color scheme consists of four colors that form a rectangle on the color wheel.



4292686186



4290730756



4278227335



4278226139



# Sweetspot

The Sweet Spot groups the original color and five complimentary colors.



4292686186



4294952152



4288950749



4286602344



4278190080



4286611584



# Same Dimension

The Same Dimension uses a secret algorithm to generate beautiful new colors.



4292686186



4294906464



4292693553



4285424486



4289527865



4281204751



# Inverse Universe

The Inverse Universe completely reimagines the original color for something new.



4292686186



4294906464



4281450717



4285424486



4289527865

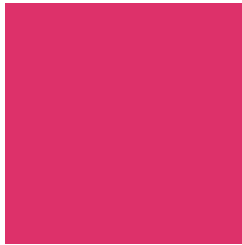


4281204751



# Previews

## White Background



This preview shows how the Android color 4292686186 looks on a white background.

## Color Contrast Check

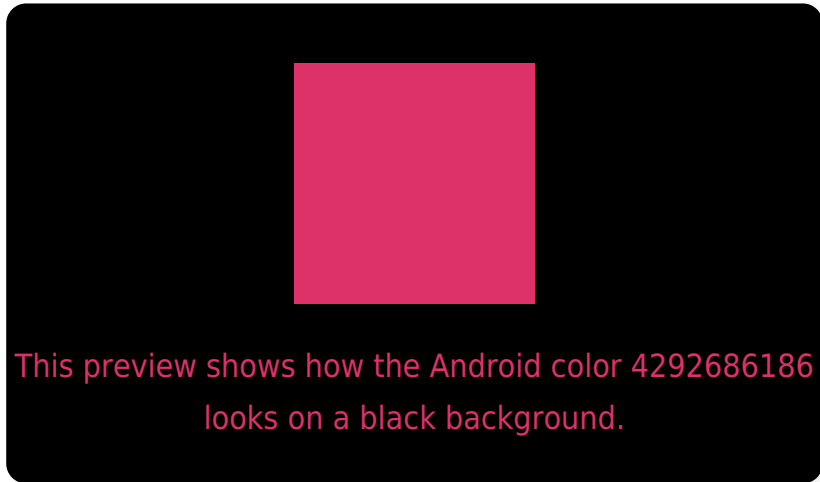
Large Text (above 18pt) WCAG AA ✓ Pass

Any Text WCAG AA ✗ Fail

Large Text (above 18pt) WCAG AAA ✗ Fail

Any Text WCAG AAA ✗ Fail

# Black Background



## Color Contrast Check

Large Text (above 18pt) WCAG AA ✓ Pass

Any Text WCAG AA ✓ Pass

Large Text (above 18pt) WCAG AAA ✓ Pass

Any Text WCAG AAA × Fail

If you want to check with other color combinations, try the [Color Contrast Checker](#).



# Android 4292686186 Background



This preview shows how black text looks on a background with the Android color 4292686186.



This preview shows how white text looks on a background with the Android color 4292686186.

# Color Blindness Simulation

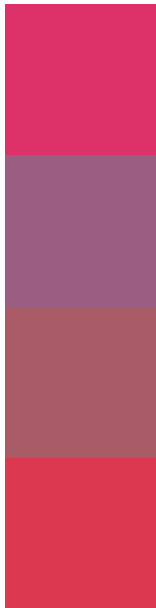
Color vision deficiency is a very complex topic, and I could not describe the different causes any better than Wikipedia does, so if you want to learn more, you should check out their [article about color blindness](#).

## Dichromacy





# Trichromacy



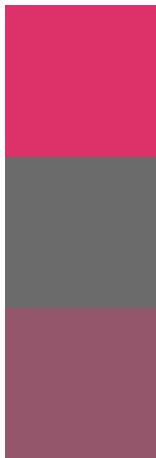
**Original Color**  
4292686186

**Protanomaly**  
4288306818

**Deuteranomaly**  
4289289061

**Tritanomaly**  
4292622415

# Monochromacy



**Original Color**  
4292686186

**Achromatopsia**  
4285229931

**Achromatomaly**  
4287911531

# CSS Examples

## Text

The CSS property to change the color of the text to Android 4292686186 is called "color". The color property can be set on classes, ids or directly on the HTML element.

This example shows how text in the color `rgb(221, 49, 106)` looks like.

```
.text, #text, p{  
    color:rgb(221, 49, 106)  
}
```

If you want to add a text shadow in that color use the text-shadow property, you can generate a text shadow directly with our [CSS Text Shadow Generator](#).

Here you see how black text with a 4 pixel rgb(221, 49, 106) colored shadow looks like.

```
.shadow{ text-shadow: 4px 4px 2px rgb(221, 49, 106) }
```

## Border

The CSS property to change the border of an element to Android 4292686186 is called "border". The border property can be set on classes, ids or directly on the HTML element.

This example shows the color as border, it can be applied via the CSS property "border" or "border-color".

```
.border, #border, table{ border:4px solid rgb(221, 49, 106) }
```

If only the border color should be changed use the property `border-color`.

```
.border{ border-color:rgb(221, 49, 106) }
```

If you want to add a box shadow in that color use:

Here you see how a box with a 4 pixel `rgb(221, 49, 106)` colored shadow looks like.

```
.boxshadow{ -moz-box-shadow:4px 4px 4px  
4px rgb(221, 49, 106); -webkit-box-  
shadow:4px 4px 4px 4px rgb(221, 49, 106);  
box-shadow:4px 4px 4px 4px rgb(221, 49,  
106) }
```

# Background

The CSS property to change the background color of an element to Android 4292686186 is called "background". The background property can be set on classes, ids or directly on the HTML element.

```
.background, #background, body{  
background: rgb(221, 49, 106) }
```

If only the background color should be changed can be used:

```
.background{ background-color: rgb(221, 49,  
106) }
```

This example shows the color as background, it is applied via the CSS property "background".

To optimize and compress your CSS code, you can use our [online CSS compressor and optimizer](#) based on csstidy. If you want to create a linear or radial gradient as background or border, check our [CSS Gradient Generator](#).



Hey! You found this booklet interesting? Support Converting Colors with the new Membership Option!

The pro membership hides all ads, plus gives you double the colors in the color bucket, and more awesome pro features!

**[Learn more, Memberships starting at \\$2.50/m!](#)**

**Follow me  
on Twitter!**

@ConvertingColor