

Converting Colors

Android(4292689790)

Have a look what the booklet for
Android(4292689790) contains.

Android(4292689790)	3
<i>Conversions</i>	4
<i>Details</i>	6
<i>Harmonies</i>	11
<i>Previews</i>	23
<i>Color Blindness Simulation</i>	26
<i>CSS Examples</i>	29

Color

Android(4292689790)

Conversions

Conversions Part 1

Format	Color
Hex	DD3F7E
RGB	221, 63, 126
RGB Percent	87%, 25%, 49%
CMY	0.1333, 0.7529, 0.5059
CMYK	0.00, 0.71, 0.43, 0.13
HSL	336°, 70%, 56%
HSV	336°, 71%, 87%
XYZ	35.3622, 20.4335, 21.8189
YIQ	117.4240, 73.9450, 53.0890

Conversions

Conversions Part 2

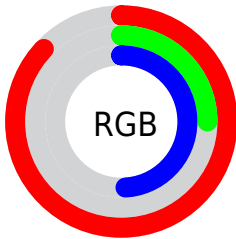
Format	Color
R_{YB}	221, 63, 126
Decimal	14499710
CIE _{Lab}	52.32, 65.11, 0.76
CIE _{LCh}	52, 65.119, 0.672
Yxy	20.4335, 0.4556, 0.2633
Android (android.graphics.Color)	4292689790 (0xFFDD3F7E)
YUV	117.4240, 4.2280, 90.8362
Hunter-Lab	45.2035, 60.5327, 3.0242

Details

The Android color **4292689790** is a dark color, and the websafe version is hex **CC3366**. The color can be described as dark muted rose. A complement of this color would be **4282375582**, and the grayscale version is **4285887861**.

A 20% lighter version of the original color is **4294933170**, and **4288741453** is the 20% darker color. If you saturate the color by 10%, you get **4292684145**, and if you desaturate by 10%, it is **4292695435**.

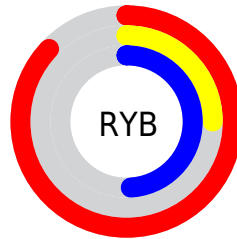
Distribution



Red (87%)

Green (25%)

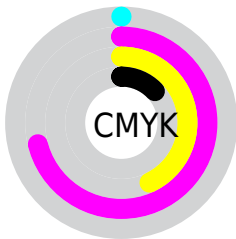
Blue (49%)



Red (87%)

Yellow (25%)

Blue (49%)

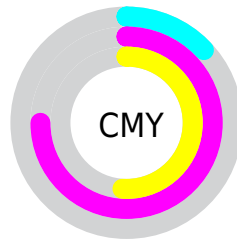


Cyan (0%)

Magenta (71%)

Yellow (43%)

Black (13%)



Cyan (13%)

Magenta (75%)

Yellow (51%)

Brightness & Saturation Gradients

These gradients show how the Android color 4292689790 changes by changing the brightness by 10 percent. The first figure shows a shift by +10% for each color and the second figure -10%.

Similar to the brightness gradients but the following saturation gradients show a change of the Android color 4292689790 by changing the saturation by 10% instead.

 4292689790

 4292689790

4294967295

 4290714213

 4294933170

 4288741453

 4294940622

 4286775351

 4294948074

 4284874786

 4294955519

 4283039754

 4294963199

 4281073665

 4278190080

 4292689790

 4292689790

 4292684145

 4292695435

 4292678499

 4292701081

 4292673624

 4292706726

 4292712371

 4292718272

 4292723918

 4292729563

 4292735208

 4292739062

Harmonies

Analogous

The Analogous color harmony consists of three colors that are next to each other on the color wheel.



4290793909



4292689790



4292561735

Triad

The Triadic color harmony groups three colors that are evenly spaced from another and form a triangle on the color wheel.



4292689790



4284320256



4278227166

Complementary

The Complementary color scheme is a pair of colors which are on the opposite of each other on the color wheel.



4292689790



4282375582

Split Complementary

Split-complementary colors differ from the complementary color scheme. The scheme consists of three colors, the original color and two neighbors of the complement color.



4278228661



4292689790



4278227522

Square

The Square scheme is like the rectangle color scheme, but the four colors are evenly spaced on the color wheel.



4292689790



4287986432



4278228604



4278223853

Rectangle

The Rectangle color scheme consists of four colors that form a rectangle on the color wheel.



4292689790



4291517477



4278228604



4278227923

Sweetspot

The Sweet Spot groups the original color and five complimentary colors.



4292689790



4294953439



4288561117



4286603372



4278190080



4286611584

Same Dimension

The Same Dimension uses a secret algorithm to generate beautiful new colors.



4292689790



4294911099



4292693823



4285424487



4289527877



4281204754

Inverse Universe

The Inverse Universe completely reimagines the original color for something new.



4292689790



4294911099



4282371549



4285424487



4289527877



4281204754

Previews

White Background



This preview shows how the Android color 4292689790 looks on a white background.

Color Contrast Check

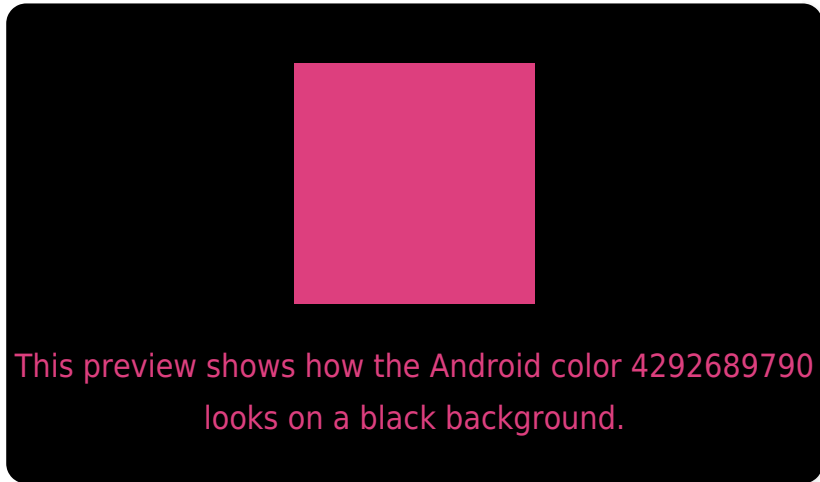
Large Text (above 18pt) WCAG AA ✓ Pass

Any Text WCAG AA ✗ Fail

Large Text (above 18pt) WCAG AAA ✗ Fail

Any Text WCAG AAA ✗ Fail

Black Background



Color Contrast Check

Large Text (above 18pt) WCAG AA ✓ Pass

Any Text WCAG AA ✓ Pass

Large Text (above 18pt) WCAG AAA ✓ Pass

Any Text WCAG AAA × Fail

If you want to check with other color combinations, try the [Color Contrast Checker](#).

Android 4292689790 Background



This preview shows how black text looks on a background with the Android color 4292689790.



This preview shows how white text looks on a background with the Android color 4292689790.

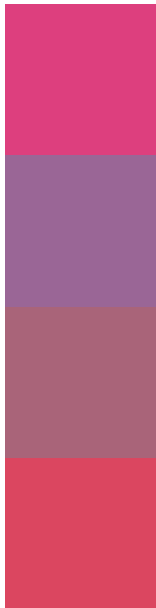
Color Blindness Simulation

Color vision deficiency is a very complex topic, and I could not describe the different causes any better than Wikipedia does, so if you want to learn more, you should check out their [article about color blindness](#).

Dichromacy



Trichromacy



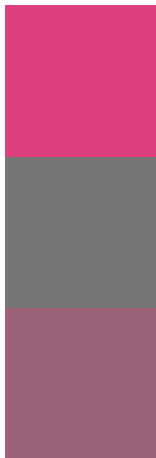
Original Color
4292689790

Protanomaly
4288308886

Deuteranomaly
4289291385

Tritanomaly
4292560480

Monochromacy



Original Color
4292689790

Achromatopsia
4285887861

Achromatomaly
4288373112

CSS Examples

Text

The CSS property to change the color of the text to Android 4292689790 is called "color". The color property can be set on classes, ids or directly on the HTML element.

This example shows how text in the color `rgb(221, 63, 126)` looks like.

```
.text, #text, p{  
    color:rgb(221, 63, 126)  
}
```

If you want to add a text shadow in that color use the text-shadow property, you can generate a text shadow directly with our [CSS Text Shadow Generator](#).

Here you see how black text with a 4 pixel rgb(221, 63, 126) colored shadow looks like.

```
.shadow{ text-shadow: 4px 4px 2px rgb(221, 63, 126) }
```

Border

The CSS property to change the border of an element to Android 4292689790 is called "border". The border property can be set on classes, ids or directly on the HTML element.

This example shows the color as border, it can be applied via the CSS property "border" or "border-color".

```
.border, #border, table{ border:4px solid rgb(221, 63, 126) }
```

If only the border color should be changed use the property border-color.

```
.border{ border-color:rgb(221, 63, 126) }
```

If you want to add a box shadow in that color use:

Here you see how a box with a 4 pixel rgb(221, 63, 126) colored shadow looks like.

```
.boxshadow{ -moz-box-shadow:4px 4px 4px  
4px rgb(221, 63, 126); -webkit-box-  
shadow:4px 4px 4px 4px rgb(221, 63, 126);  
box-shadow:4px 4px 4px 4px rgb(221, 63,  
126) }
```

Background

The CSS property to change the background color of an element to Android 4292689790 is called "background". The background property can be set on classes, ids or directly on the HTML element.

```
.background, #background, body{  
background: rgb(221, 63, 126) }
```

If only the background color should be changed can be used:

```
.background{ background-color: rgb(221, 63,  
126) }
```

This example shows the color as background, it is applied via the CSS property "background".

To optimize and compress your CSS code, you can use our [online CSS compressor and optimizer](#) based on csstidy. If you want to create a linear or radial gradient as background or border, check our [CSS Gradient Generator](#).

Hey! You found this booklet interesting? Support Converting Colors with the new Membership Option!

The pro membership hides all ads, plus gives you double the colors in the color bucket, and more awesome pro features!

[Learn more, Memberships starting at \\$2.50/m!](#)

**Follow me
on Twitter!**

@ConvertingColor