

# Converting Colors

Android(4292692105)

Have a look what the booklet for  
Android(4292692105) contains.

<b>Android(4292692105)</b> .....	3
<i><b>Conversions</b></i> .....	4
<i><b>Details</b></i> .....	6
<i><b>Harmonies</b></i> .....	11
<i><b>Previews</b></i> .....	23
<i><b>Color Blindness Simulation</b></i> .....	26
<i><b>CSS Examples</b></i> .....	29

# Color

**Android(4292692105)**

# Conversions

## Conversions Part 1

<b>Format</b>	<b>Color</b>
Hex	DD4889
RGB	221, 72, 137
RGB Percent	87%, 28%, 54%
CMY	0.1333, 0.7176, 0.4627
CMYK	0.00, 0.67, 0.38, 0.13
HSL	334°, 69%, 57%
HSV	334°, 67%, 87%
XYZ	36.6515, 21.8130, 25.9455
YIQ	123.9610, 67.9390, 51.8030

# Conversions

## Conversions Part 2

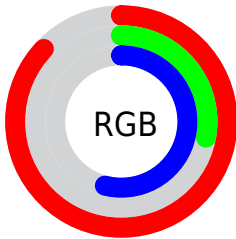
<b>Format</b>	<b>Color</b>
<b>R<sub>YB</sub></b>	221, 72, 137
Decimal	14502025
CIE Lab	53.83, 62.95, -3.60
CIE LCh	54, 63.053, 356.727
Yxy	21.8130, 0.4342, 0.2584
Android (android.graphics.Color)	4292692105 (0xFFDD4889)
YUV	123.9610, 6.4282, 85.1032
Hunter-Lab	46.7044, 58.3460, -0.2440

# Details

The Android color `4292692105` is a dark color, and the websafe version is hex `FF6699`. The color can be described as middle muted rose. A complement of this color would be `4282965404`, and the grayscale version is `4286348412`.

A 20% lighter version of the original color is `4294935230`, and `4288741463` is the 20% darker color. If you saturate the color by 10%, you get `4292686461`, and if you desaturate by 10%, it is `4292697749`.

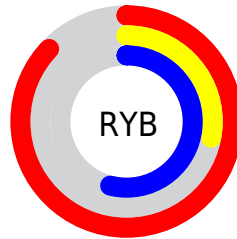
# Distribution



Red (87%)

Green (28%)

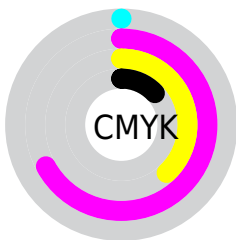
Blue (54%)



Red (87%)

Yellow (28%)

Blue (54%)

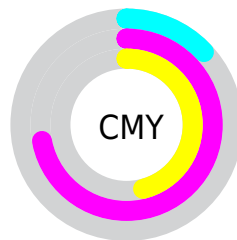


Cyan (0%)

Magenta (67%)

Yellow (38%)

Black (13%)



Cyan (13%)

Magenta (72%)

Yellow (46%)

# Brightness & Saturation Gradients

These gradients show how the Android color 4292692105 changes by changing the brightness by 10 percent. The first figure shows a shift by +10% for each color and the second figure -10%.

Similar to the brightness gradients but the following saturation gradients show a change of the Android color 4292692105 by changing the saturation by 10% instead.





4292692105



4292692105

4294967295



4290717808



4294935230



4288741463



4294942426



4286840896



4294949878



4284940330



4294957311



4283105302



4294964991



4281270274



4278190080



4292692105



4292692105



4292686461



4292697749

 4292680816

 4292703394

 4292675172

 4292709038

 4292673632

 4292714683

 4292720583

 4292726228

 4292731872

 4292737517

 4292739065

# Harmonies

## Analogous

The Analogous color harmony consists of three colors that are next to each other on the color wheel.



4290534333



4292692105



4292824915

# Triad

The Triadic color harmony groups three colors that are evenly spaced from another and form a triangle on the color wheel.



4292692105



4285238278



4278228443

# Complementary

The Complementary color scheme is a pair of colors which are on the opposite of each other on the color wheel.



4292692105



4282965404

# Split Complementary

Split-complementary colors differ from the complementary color scheme. The scheme consists of three colors, the original color and two neighbors of the complement color.



4278229424



4292692105



4278228289

# Square

The Square scheme is like the rectangle color scheme, but the four colors are evenly spaced on the color wheel.



4292692105



4288642048



4278229369



4278225390

# Rectangle

The Rectangle color scheme consists of four colors that form a rectangle on the color wheel.



4292692105



4291976754



4278229369



4278228943



# Sweetspot

The Sweet Spot groups the original color and five complimentary colors.



4292692105



4294954210



4288301277



4286603630



4278190080



4286611584



# Same Dimension

The Same Dimension uses a secret algorithm to generate beautiful new colors.



4292692105



4294914187



4292693832



4285424487



4289527884



4281204756



# Inverse Universe

The Inverse Universe completely reimagines the original color for something new.



4292692105



4294914187



4282963677



4285424487



4289527884



4281204756



# Previews

## White Background



This preview shows how the Android color 4292692105 looks on a white background.

## Color Contrast Check

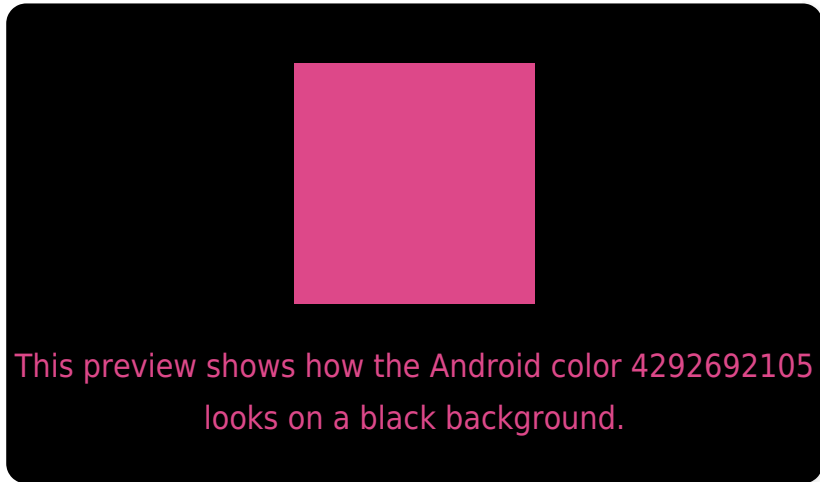
Large Text (above 18pt) WCAG AA ✓ Pass

Any Text WCAG AA ✗ Fail

Large Text (above 18pt) WCAG AAA ✗ Fail

Any Text WCAG AAA ✗ Fail

# Black Background



## Color Contrast Check

Large Text (above 18pt) WCAG AA ✓ Pass

Any Text WCAG AA ✓ Pass

Large Text (above 18pt) WCAG AAA ✓ Pass

Any Text WCAG AAA × Fail

If you want to check with other color combinations, try the [Color Contrast Checker](#).



# Android 4292692105 Background



This preview shows how black text looks on a background with the Android color 4292692105.



This preview shows how white text looks on a background with the Android color 4292692105.

# Color Blindness Simulation

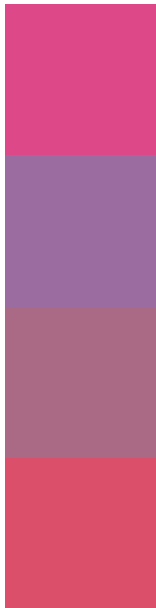
Color vision deficiency is a very complex topic, and I could not describe the different causes any better than Wikipedia does, so if you want to learn more, you should check out their [article about color blindness](#).

## Dichromacy





# Trichromacy



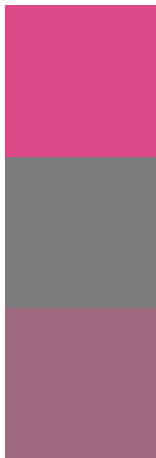
**Original Color**  
4292692105

**Protanomaly**  
4288375968

**Deuteranomaly**  
4289358469

**Tritanomaly**  
4292562794

# Monochromacy



**Original Color**  
4292692105

**Achromatopsia**  
4286348412

**Achromatomaly**  
4288637313

# CSS Examples

## Text

The CSS property to change the color of the text to Android 4292692105 is called "color". The color property can be set on classes, ids or directly on the HTML element.

This example shows how text in the color `rgb(221, 72, 137)` looks like.

```
.text, #text, p{  
    color:rgb(221, 72, 137)  
}
```

If you want to add a text shadow in that color use the text-shadow property, you can generate a text shadow directly with our [CSS Text Shadow Generator](#).

Here you see how black text with a 4 pixel rgb(221, 72, 137) colored shadow looks like.

```
.shadow{ text-shadow: 4px 4px 2px rgb(221, 72, 137) }
```

## Border

The CSS property to change the border of an element to Android 4292692105 is called "border". The border property can be set on classes, ids or directly on the HTML element.

This example shows the color as border, it can be applied via the CSS property "border" or "border-color".

```
.border, #border, table{ border:4px solid rgb(221, 72, 137) }
```

If only the border color should be changed use the property `border-color`.

```
.border{ border-color:rgb(221, 72, 137) }
```

If you want to add a box shadow in that color use:

Here you see how a box with a 4 pixel `rgb(221, 72, 137)` colored shadow looks like.

```
.boxshadow{ -moz-box-shadow:4px 4px 4px 4px rgb(221, 72, 137); -webkit-box-shadow:4px 4px 4px 4px rgb(221, 72, 137); box-shadow:4px 4px 4px 4px rgb(221, 72, 137) }
```

# Background

The CSS property to change the background color of an element to Android 4292692105 is called "background". The background property can be set on classes, ids or directly on the HTML element.

```
.background, #background, body{  
background: rgb(221, 72, 137) }
```

If only the background color should be changed can be used:

```
.background{ background-color: rgb(221, 72,  
137) }
```

This example shows the color as background, it is applied via the CSS property "background".

To optimize and compress your CSS code, you can use our [online CSS compressor and optimizer](#) based on csstidy. If you want to create a linear or radial gradient as background or border, check our [CSS Gradient Generator](#).



Hey! You found this booklet interesting? Support Converting Colors with the new Membership Option!

The pro membership hides all ads, plus gives you double the colors in the color bucket, and more awesome pro features!

**[Learn more, Memberships starting at \\$2.50/m!](#)**

**Follow me  
on Twitter!**

**@ConvertingColor**