

Converting Colors

Android(4292695410)

Have a look what the booklet for
Android(4292695410) contains.

Android(4292695410)	3
<i>Conversions</i>	4
<i>Details</i>	6
<i>Harmonies</i>	11
<i>Previews</i>	23
<i>Color Blindness Simulation</i>	26
<i>CSS Examples</i>	29

Color

Android(4292695410)

Conversions

Conversions Part 1

Format	Color
Hex	DD5572
RGB	221, 85, 114
RGB Percent	87%, 33%, 45%
CMY	0.1333, 0.6667, 0.5529
CMYK	0.00, 0.62, 0.48, 0.13
HSL	347°, 67%, 60%
HSV	347°, 62%, 87%
XYZ	36.1046, 23.0841, 18.4723
YIQ	128.9700, 71.7470, 37.8510

Conversions

Conversions Part 2

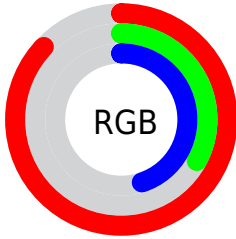
Format	Color
R_{YB}	221, 85, 114
Decimal	14505330
CIE Lab	55.16, 55.39, 11.97
CIE LCh	55, 56.673, 12.193
Yxy	23.0841, 0.4649, 0.2972
Android (android.graphics.Color)	4292695410 (0xFFDD5572)
YUV	128.9700, -7.3802, 80.7103
Hunter-Lab	48.0459, 50.0554, 10.8367

Details

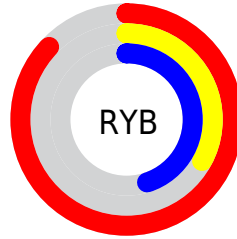
The Android color **4292695410** is a dark color, and the websafe version is hex **CC3366**. The color can be described as middle muted rose. A complement of this color would be **4283817408**, and the grayscale version is **4286677377**.

A 20% lighter version of the original color is **4294937766**, and **4288747330** is the 20% darker color. If you saturate the color by 10%, you get **4292689761**, and if you desaturate by 10%, it is **4292701059**.

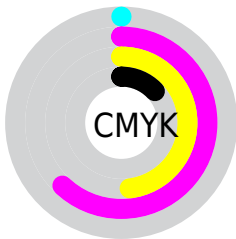
Distribution



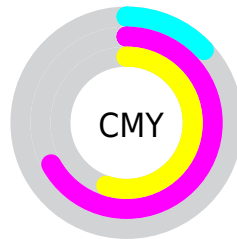
- Red (87%)
- Green (33%)
- Blue (45%)



- Red (87%)
- Yellow (33%)
- Blue (45%)



- Cyan (0%)
- Magenta (62%)
- Yellow (48%)
- Black (13%)



- Cyan (13%)
- Magenta (67%)
- Yellow (55%)

Brightness & Saturation Gradients

These gradients show how the Android color 4292695410 changes by changing the brightness by 10 percent. The first figure shows a shift by +10% for each color and the second figure -10%.

Similar to the brightness gradients but the following saturation gradients show a change of the Android color 4292695410 by changing the saturation by 10% instead.

 4292695410

 4292695410

4294967295

 4290722138

 4294937766

 4288747330

 4294944961

 4286775341

 4294952413

 4284874776

 4294959865

 4283039745

 4281204738

 4278190080

 4292695410

 4292695410

 4292689761

 4292701059

 4292684111

 4292706709

 4292678462

 4292712358

 4292673583

 4292718008

 4292723657

 4292729562

 4292735212

 4292739069

 4292739071

Harmonies

Analogous

The Analogous color harmony consists of three colors that are next to each other on the color wheel.



4291713699



4292695410



4292043588

Triad

The Triadic color harmony groups three colors that are evenly spaced from another and form a triangle on the color wheel.



4292695410



4283667254



4278227681

Complementary

The Complementary color scheme is a pair of colors which are on the opposite of each other on the color wheel.



4292695410



4283817408

Split Complementary

Split-complementary colors differ from the complementary color scheme. The scheme consists of three colors, the original color and two neighbors of the complement color.



4278229445



4292695410



4278229348

Square

The Square scheme is like the rectangle color scheme, but the four colors are evenly spaced on the color wheel.



4292695410



4287268885



4278229911



4282745828

Rectangle

The Rectangle color scheme consists of four colors that form a rectangle on the color wheel.



4292695410



4290867242



4278229911



4278228443

Sweetspot

The Sweet Spot groups the original color and five complimentary colors.



4292695410



4294955483



4290794973



4286604137



4278190080



4286611584

Same Dimension

The Same Dimension uses a secret algorithm to generate beautiful new colors.



4292695410



4294918763



4292705365



4285424485



4289527845



4281204746

Inverse Universe

The Inverse Universe completely reimagines the original color for something new.



4292695410



4294918763



4283807453



4285424485



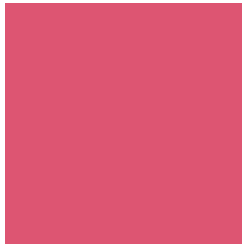
4289527845



4281204746

Previews

White Background



This preview shows how the Android color 4292695410 looks on a white background.

Color Contrast Check

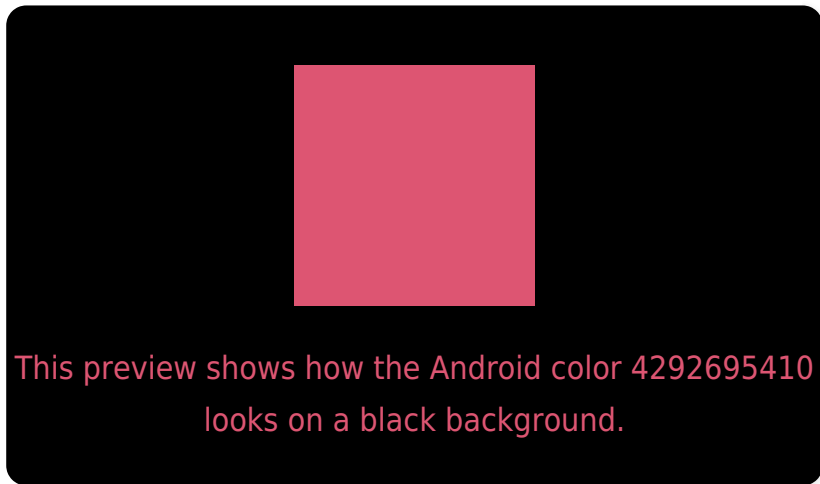
Large Text (above 18pt) WCAG AA ✓ Pass

Any Text WCAG AA ✗ Fail

Large Text (above 18pt) WCAG AAA ✗ Fail

Any Text WCAG AAA ✗ Fail

Black Background



Color Contrast Check

Large Text (above 18pt) WCAG AA ✓ Pass

Any Text WCAG AA ✓ Pass

Large Text (above 18pt) WCAG AAA ✓ Pass

Any Text WCAG AAA × Fail

If you want to check with other color combinations, try the [Color Contrast Checker](#).

Android 4292695410 Background



This preview shows how black text looks on a background with the Android color 4292695410.

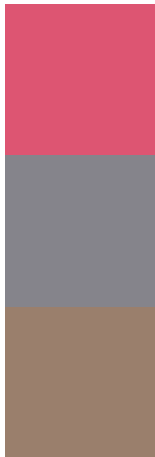


This preview shows how white text looks on a background with the Android color 4292695410.

Color Blindness Simulation

Color vision deficiency is a very complex topic, and I could not describe the different causes any better than Wikipedia does, so if you want to learn more, you should check out their [article about color blindness](#).

Dichromacy

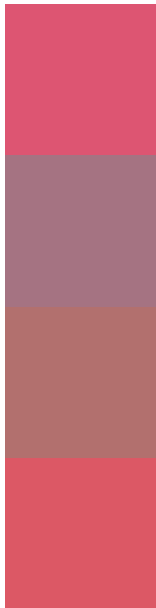


Original Color
4292695410

Protanopia
4286940299

Deuteranopia
4288315244

Trichromacy



Original Color
4292695410

Protanomaly
4289033090

Deuteranomaly
4289884270

Tritanomaly
4292630629

Monochromacy



Original Color
4292695410

Achromatopsia
4286677377

Achromatomaly
4288835964

CSS Examples

Text

The CSS property to change the color of the text to Android 4292695410 is called "color". The color property can be set on classes, ids or directly on the HTML element.

This example shows how text in the color `rgb(221, 85, 114)` looks like.

```
.text, #text, p{  
    color:rgb(221, 85, 114)  
}
```

If you want to add a text shadow in that color use the text-shadow property, you can generate a text shadow directly with our [CSS Text Shadow Generator](#).

Here you see how black text with a 4 pixel rgb(221, 85, 114) colored shadow looks like.

```
.shadow{ text-shadow: 4px 4px 2px rgb(221, 85, 114) }
```

Border

The CSS property to change the border of an element to Android 4292695410 is called "border". The border property can be set on classes, ids or directly on the HTML element.

This example shows the color as border, it can be applied via the CSS property "border" or "border-color".

```
.border, #border, table{ border:4px solid rgb(221, 85, 114) }
```

If only the border color should be changed use the property `border-color`.

```
.border{ border-color:rgb(221, 85, 114) }
```

If you want to add a box shadow in that color use:

Here you see how a box with a 4 pixel `rgb(221, 85, 114)` colored shadow looks like.

```
.boxshadow{ -moz-box-shadow:4px 4px 4px  
4px rgb(221, 85, 114); -webkit-box-  
shadow:4px 4px 4px 4px rgb(221, 85, 114);  
box-shadow:4px 4px 4px 4px rgb(221, 85,  
114) }
```

Background

The CSS property to change the background color of an element to Android 4292695410 is called "background". The background property can be set on classes, ids or directly on the HTML element.

```
.background, #background, body{  
background: rgb(221, 85, 114) }
```

If only the background color should be changed can be used:

```
.background{ background-color: rgb(221, 85,  
114) }
```

This example shows the color as background, it is applied via the CSS property "background".

To optimize and compress your CSS code, you can use our [online CSS compressor and optimizer](#) based on csstidy. If you want to create a linear or radial gradient as background or border, check our [CSS Gradient Generator](#).

Hey! You found this booklet interesting? Support Converting Colors with the new Membership Option!

The pro membership hides all ads, plus gives you double the colors in the color bucket, and more awesome pro features!

[Learn more, Memberships starting at \\$2.50/m!](#)

**Follow me
on Twitter!**

@ConvertingColor