

Converting Colors

Android(4292704654)

Have a look what the booklet for
Android(4292704654) contains.

Android(4292704654)	3
<i>Conversions</i>	4
<i>Details</i>	6
<i>Harmonies</i>	11
<i>Previews</i>	23
<i>Color Blindness Simulation</i>	26
<i>CSS Examples</i>	29

Color

Android(4292704654)

Conversions

Conversions Part 1

Format	Color
Hex	DD798E
RGB	221, 121, 142
RGB Percent	87%, 47%, 56%
CMY	0.1333, 0.5255, 0.4431
CMYK	0.00, 0.45, 0.36, 0.13
HSL	347°, 60%, 67%
HSV	347°, 45%, 87%
XYZ	41.5387, 30.9999, 29.3854
YIQ	153.2940, 52.8590, 27.7310

Conversions

Conversions Part 2

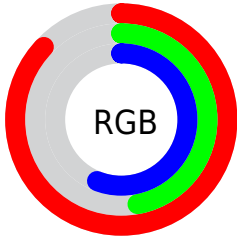
Format	Color
R _Y B	221, 121, 142
Decimal	14514574
CIE Lab	62.51, 41.04, 6.11
CIE LCh	63, 41.496, 8.468
Yxy	30.9999, 0.4075, 0.3041
Android (android.graphics.Color)	4292704654 (0xFFDD798E)
YUV	153.2940, -5.5679, 59.3782
Hunter-Lab	55.6775, 35.7356, 7.6823

Details

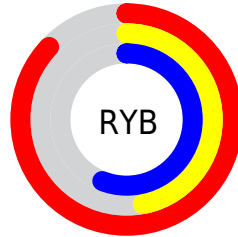
The Android color `4292704654` is a light color, and the websafe version is hex `CC6666`. A complement of this color would be `4286176712`, and the grayscale version is `4288256409`.

A 20% lighter version of the original color is `4294946756`, and `4288890204` is the 20% darker color. If you saturate the color by 10%, you get `4292699005`, and if you desaturate by 10%, it is `4292710303`.

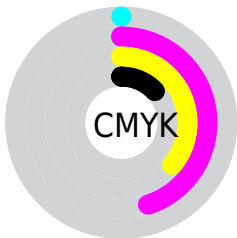
Distribution



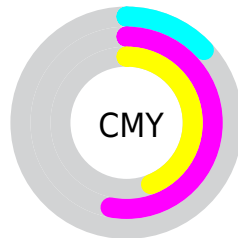
- Red (87%)
- Green (47%)
- Blue (56%)



- Red (87%)
- Yellow (47%)
- Blue (56%)



- Cyan (0%)
- Magenta (45%)
- Yellow (36%)
- Black (13%)



- Cyan (13%)
- Magenta (53%)
- Yellow (44%)

Brightness & Saturation Gradients

These gradients show how the Android color 4292704654 changes by changing the brightness by 10 percent. The first figure shows a shift by +10% for each color and the second figure -10%.

Similar to the brightness gradients but the following saturation gradients show a change of the Android color 4292704654 by changing the saturation by 10% instead.

 4292704654

 4292704654

4294967295

 4290797428

 4294946756

 4288890204

 4294953951

 4287048517

 4294961404

 4285206062

 4283432986

 4281860097

 4279500800

 4278190080

 4292704654

 4292704654

 4292699005

 4292710303

 4292693355

 4292715953

 4292687706

 4292721602

 4292682056

 4292727252

 4292676151

 4292733157

 4292673582

 4292738807

 4292739071

Harmonies

Analogous

The Analogous color harmony consists of three colors that are next to each other on the color wheel.



4291657139



4292704654



4292444011

Triad

The Triadic color harmony groups three colors that are evenly spaced from another and form a triangle on the color wheel.



4292704654



4286358108



4278231771

Complementary

The Complementary color scheme is a pair of colors which are on the opposite of each other on the color wheel.



4292704654



4286176712

Split Complementary

Split-complementary colors differ from the complementary color scheme. The scheme consists of three colors, the original color and two neighbors of the complement color.



4278233540



4292704654



4283148411

Square

The Square scheme is like the rectangle color scheme, but the four colors are evenly spaced on the color wheel.



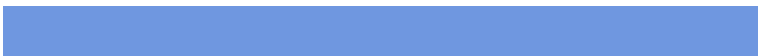
4292704654



4288976972



4278233761



4285503456

Rectangle

The Rectangle color scheme consists of four colors that form a rectangle on the color wheel.



4292704654



4291594073



4278233761



4278232533

Sweetspot

The Sweet Spot groups the original color and five complimentary colors.



4292704654



4294958051



4291262941



4286605934



4278190080



4286611584

Same Dimension

The Same Dimension uses a secret algorithm to generate beautiful new colors.



4292704654



4294931858



4292711801



4285424485



4289527844



4281204746

Inverse Universe

The Inverse Universe completely reimagines the original color for something new.



4292704654



4294931858



4286169565



4285424485



4289527844



4281204746

Previews

White Background



This preview shows how the Android color 4292704654 looks on a white background.

Color Contrast Check

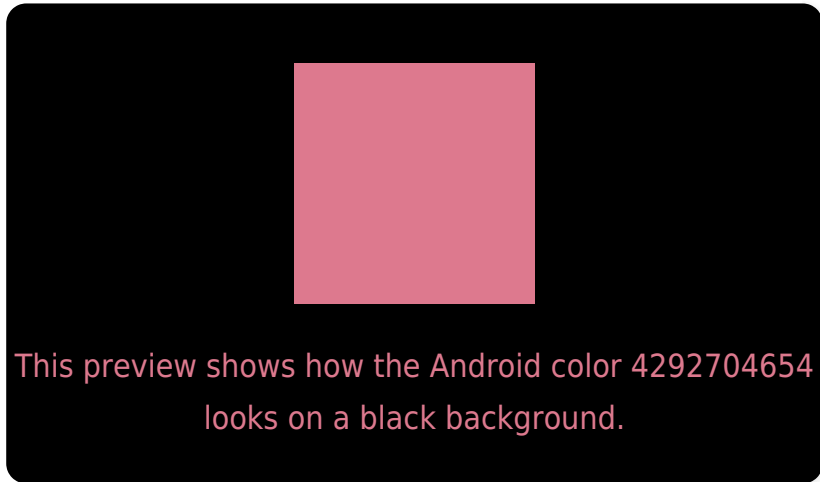
Large Text (above 18pt) WCAG AA × Fail

Any Text WCAG AA × Fail

Large Text (above 18pt) WCAG AAA × Fail

Any Text WCAG AAA × Fail

Black Background



Color Contrast Check

Large Text (above 18pt) WCAG AA ✓ Pass

Any Text WCAG AA ✓ Pass

Large Text (above 18pt) WCAG AAA ✓ Pass

Any Text WCAG AAA ✓ Pass

If you want to check with other color combinations, try the [Color Contrast Checker](#).

Android 4292704654 Background



This preview shows how black text looks on a background with the Android color 4292704654.



This preview shows how white text looks on a background with the Android color 4292704654.

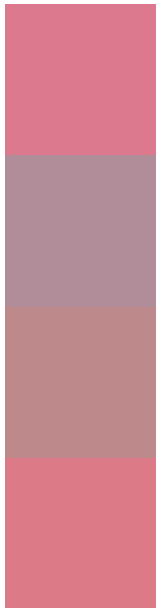
Color Blindness Simulation

Color vision deficiency is a very complex topic, and I could not describe the different causes any better than Wikipedia does, so if you want to learn more, you should check out their [article about color blindness](#).

Dichromacy



Trichromacy



Original Color
4292704654

Protanomaly
4289825945

Deuteranomaly
4290611595

Tritanomaly
4292639368

Monochromacy



Original Color
4292704654

Achromatopsia
4288256409

Achromatomaly
4289891733

CSS Examples

Text

The CSS property to change the color of the text to Android 4292704654 is called "color". The color property can be set on classes, ids or directly on the HTML element.

This example shows how text in the color `rgb(221, 121, 142)` looks like.

```
.text, #text, p{  
    color:rgb(221, 121, 142)  
}
```

If you want to add a text shadow in that color use the text-shadow property, you can generate a text shadow directly with our [CSS Text Shadow Generator](#).

Here you see how black text with a 4 pixel rgb(221, 121, 142) colored shadow looks like.

```
.shadow{ text-shadow: 4px 4px 2px rgb(221, 121, 142) }
```

Border

The CSS property to change the border of an element to Android 4292704654 is called "border". The border property can be set on classes, ids or directly on the HTML element.

This example shows the color as border, it can be applied via the CSS property "border" or "border-color".

```
.border, #border, table{ border:4px solid rgb(221, 121, 142) }
```

If only the border color should be changed use the property `border-color`.

```
.border{ border-color:rgb(221, 121, 142) }
```

If you want to add a box shadow in that color use:

Here you see how a box with a 4 pixel `rgb(221, 121, 142)` colored shadow looks like.

```
.boxshadow{ -moz-box-shadow:4px 4px 4px  
4px rgb(221, 121, 142); -webkit-box-  
shadow:4px 4px 4px 4px rgb(221, 121, 142);  
box-shadow:4px 4px 4px 4px rgb(221, 121,  
142) }
```

Background

The CSS property to change the background color of an element to Android 4292704654 is called "background". The background property can be set on classes, ids or directly on the HTML element.

```
.background, #background, body{  
background: rgb(221, 121, 142) }
```

If only the background color should be changed can be used:

```
.background{ background-color: rgb(221,  
121, 142) }
```

This example shows the color as background, it is applied via the CSS property "background".

To optimize and compress your CSS code, you can use our [online CSS compressor and optimizer](#) based on csstidy. If you want to create a linear or radial gradient as background or border, check our [CSS Gradient Generator](#).

Hey! You found this booklet interesting? Support Converting Colors with the new Membership Option!

The pro membership hides all ads, plus gives you double the colors in the color bucket, and more awesome pro features!

[Learn more, Memberships starting at \\$2.50/m!](#)

**Follow me
on Twitter!**

@ConvertingColor