

# Converting Colors

Android(4292706473)

Have a look what the booklet for  
Android(4292706473) contains.

<b>Android(4292706473)</b> .....	3
<i><b>Conversions</b></i> .....	4
<i><b>Details</b></i> .....	6
<i><b>Harmonies</b></i> .....	11
<i><b>Previews</b></i> .....	23
<i><b>Color Blindness Simulation</b></i> .....	26
<i><b>CSS Examples</b></i> .....	29

# **Color**

**Android(4292706473)**

# Conversions

## Conversions Part 1

Format	Color
Hex	DD80A9
RGB	221, 128, 169
RGB Percent	87%, 50%, 66%
CMY	0.1333, 0.4980, 0.3373
CMYK	0.00, 0.42, 0.24, 0.13
HSL	334°, 58%, 68%
HSV	334°, 42%, 87%
XYZ	44.6994, 33.6751, 41.6801
YIQ	160.4810, 42.2670, 32.4670

# Conversions

## Conversions Part 2

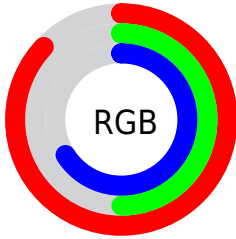
<b>Format</b>	<b>Color</b>
R <sub>Y</sub> B	221, 128, 169
Decimal	14516393
CIE Lab	64.70, 40.97, -6.07
CIE LCh	65, 41.415, 351.567
Yxy	33.6751, 0.3723, 0.2805
Android (android.graphics.Color)	4292706473 (0xFFDD80A9)
YUV	160.4810, 4.1999, 53.0752
Hunter-Lab	58.0302, 35.9417, -1.9638

# Details

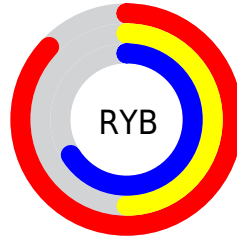
The Android color **4292706473** is a light color, and the websafe version is hex **CC6699**. A complement of this color would be **4286635444**, and the grayscale version is **4288716960**.

A 20% lighter version of the original color is **4294948576**, and **4288957557** is the 20% darker color. If you saturate the color by 10%, you get **4292700829**, and if you desaturate by 10%, it is **4292712117**.

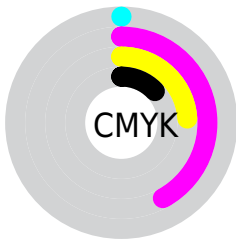
# Distribution



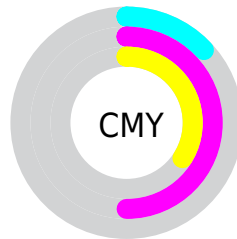
- Red (87%)
- Green (50%)
- Blue (66%)



- Red (87%)
- Yellow (50%)
- Blue (66%)



- Cyan (0%)
- Magenta (42%)
- Yellow (24%)
- Black (13%)



- Cyan (13%)
- Magenta (50%)
- Yellow (34%)

# Brightness & Saturation Gradients

These gradients show how the Android color 4292706473 changes by changing the brightness by 10 percent. The first figure shows a shift by +10% for each color and the second figure -10%.

Similar to the brightness gradients but the following saturation gradients show a change of the Android color 4292706473 by changing the saturation by 10% instead.



 4292706473

 4292706473

4294967295

 4290799247

 4294948576

 4288957557


 4294956029

 4287116124

 4294963199

 4285339717

 4283629615

 4281925658

 4280287233

 4278190080

 4292706473

 4292706473

 4292700829

 4292712117

 4292695184

 4292717762

 4292689540

 4292723406

 4292683896

 4292729050

 4292677995

 4292734951

 4292673633

 4292739059

 4292739071

# Harmonies

## Analogous

The Analogous color harmony consists of three colors that are next to each other on the color wheel.



4290873803



4292706473



4293165188

# Triad

The Triadic color harmony groups three colors that are evenly spaced from another and form a triangle on the color wheel.



4292706473



4288258902



4278234326

# Complementary

The Complementary color scheme is a pair of colors which are on the opposite of each other on the color wheel.



4292706473



4286635444

# Split Complementary

Split-complementary colors differ from the complementary color scheme. The scheme consists of three colors, the original color and two neighbors of the complement color.



4278235319



4292706473



4285442925

# Square

The Square scheme is like the rectangle color scheme, but the four colors are evenly spaced on the color wheel.



4292706473



4290615123



4281643153



4283147494

# Rectangle

The Rectangle color scheme consists of four colors that form a rectangle on the color wheel.



4292706473



4292773486



4281643153



4278234829



# Sweetspot

The Sweet Spot groups the original color and five complimentary colors.



4292706473



4294958828



4289954013



4286606196



4278190080



4286611584



# Same Dimension

The Same Dimension uses a secret algorithm to generate beautiful new colors.



4292706473



4294934712



4292707712



4285424488



4289527884



4281204756



# Inverse Universe

The Inverse Universe completely reimagines the original color for something new.



4292706473



4294934712



4286634205



4285424488



4289527884



4281204756



# Previews

## White Background



This preview shows how the Android color 4292706473 looks on a white background.

## Color Contrast Check

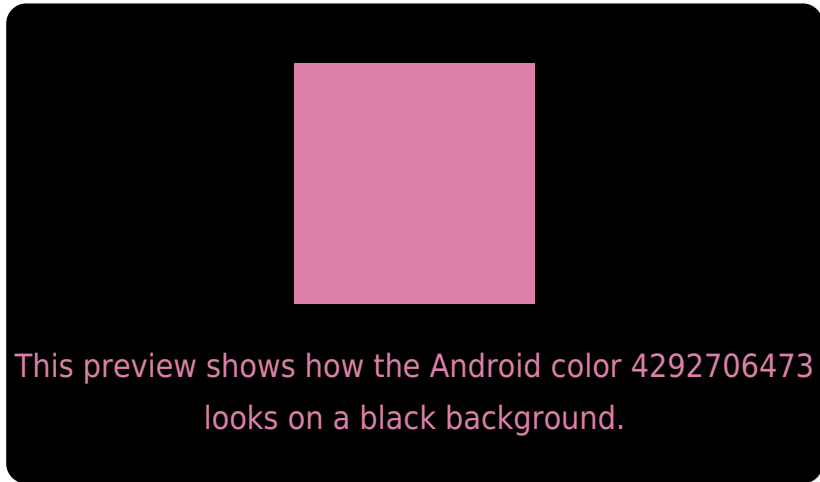
Large Text (above 18pt) WCAG AA × Fail

Any Text WCAG AA × Fail

Large Text (above 18pt) WCAG AAA × Fail

Any Text WCAG AAA × Fail

# Black Background



## Color Contrast Check

Large Text (above 18pt) WCAG AA ✓ Pass

Any Text WCAG AA ✓ Pass

Large Text (above 18pt) WCAG AAA ✓ Pass

Any Text WCAG AAA ✓ Pass

If you want to check with other color combinations, try the [Color Contrast Checker](#).



# Android 4292706473 Background



This preview shows how black text looks on a background with the Android color 4292706473.




This preview shows how white text looks on a background with the Android color 4292706473.

# Color Blindness Simulation

Color vision deficiency is a very complex topic, and I could not describe the different causes any better than Wikipedia does, so if you want to learn more, you should check out their [article about color blindness](#).

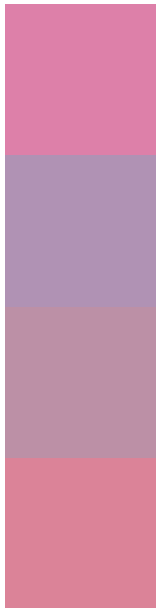
## Dichromacy





**Tritanopia**  
4292511119

# Trichromacy



**Original Color**  
4292706473

**Protanomaly**  
4289761972

**Deuteranomaly**  
4290547878

**Tritanomaly**  
4292576152

# Monochromacy



**Original Color**  
4292706473

**Achromatopsia**  
4288716960

**Achromatomaly**  
4290155683

# CSS Examples

## Text

The CSS property to change the color of the text to Android 4292706473 is called "color". The color property can be set on classes, ids or directly on the HTML element.

This example shows how text in the color `rgb(221, 128, 169)` looks like.

```
.text, #text, p{  
    color:rgb(221, 128, 169)  
}
```

If you want to add a text shadow in that color use the text-shadow property, you can generate a text shadow directly with our [CSS Text Shadow Generator](#).

Here you see how black text with a 4 pixel rgb(221, 128, 169) colored shadow looks like.

```
.shadow{ text-shadow: 4px 4px 2px rgb(221, 128, 169) }
```

## Border

The CSS property to change the border of an element to Android 4292706473 is called "border". The border property can be set on classes, ids or directly on the HTML element.

This example shows the color as border, it can be applied via the CSS property "border" or "border-color".

```
.border, #border, table{ border:4px solid rgb(221, 128, 169) }
```

If only the border color should be changed use the property `border-color`.

```
.border{ border-color:rgb(221, 128, 169) }
```

If you want to add a box shadow in that color use:

Here you see how a box with a 4 pixel `rgb(221, 128, 169)` colored shadow looks like.

```
.boxshadow{ -moz-box-shadow:4px 4px 4px  
4px rgb(221, 128, 169); -webkit-box-  
shadow:4px 4px 4px 4px rgb(221, 128, 169);  
box-shadow:4px 4px 4px 4px rgb(221, 128,  
169) }
```

# Background

The CSS property to change the background color of an element to Android 4292706473 is called "background". The background property can be set on classes, ids or directly on the HTML element.

```
.background, #background, body{  
background: rgb(221, 128, 169) }
```

If only the background color should be changed can be used:

```
.background{ background-color: rgb(221,  
128, 169) }
```

This example shows the color as background, it is applied via the CSS property "background".

To optimize and compress your CSS code, you can use our [online CSS compressor and optimizer](#) based on csstidy. If you want to create a linear or radial gradient as background or border, check our [CSS Gradient Generator](#).



Hey! You found this booklet interesting? Support Converting Colors with the new Membership Option!

The pro membership hides all ads, plus gives you double the colors in the color bucket, and more awesome pro features!

**[Learn more, Memberships starting at \\$2.50/m!](#)**

**Follow me  
on Twitter!**

@ConvertingColor