

# Converting Colors

Android(4292713385)

Have a look what the booklet for  
Android(4292713385) contains.

<b>Android(4292713385)</b> .....	3
<i><b>Conversions</b></i> .....	4
<i><b>Details</b></i> .....	6
<i><b>Harmonies</b></i> .....	11
<i><b>Previews</b></i> .....	23
<i><b>Color Blindness Simulation</b></i> .....	26
<i><b>CSS Examples</b></i> .....	29

# **Color**

**Android(4292713385)**

# Conversions

## Conversions Part 1

Format	Color
Hex	DD9BA9
RGB	221, 155, 169
RGB Percent	87%, 61%, 66%
CMY	0.1333, 0.3922, 0.3373
CMYK	0.00, 0.30, 0.24, 0.13
HSL	347°, 49%, 74%
HSV	347°, 30%, 87%
XYZ	48.7016, 41.6794, 43.0142
YIQ	176.3300, 34.8420, 18.3460

# Conversions

## Conversions Part 2

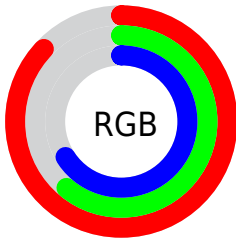
Format	Color
R <sub>Y</sub> B	221, 155, 169
Decimal	14523305
CIE Lab	70.65, 26.61, 2.64
CIE LCh	71, 26.745, 5.675
Yxy	41.6794, 0.3651, 0.3125
Android (android.graphics.Color)	4292713385 (0xFFDD9BA9)
YUV	176.3300, -3.6137, 39.1756
Hunter-Lab	64.5596, 21.6751, 5.6885

# Details

The Android color `4292713385` is a light color, and the websafe version is hex `CC9999`. A complement of this color would be `4288404943`, and the grayscale version is `4289769648`.

A 20% lighter version of the original color is `4294955744`, and `4289030005` is the 20% darker color. If you saturate the color by 10%, you get `4292707736`, and if you desaturate by 10%, it is `4292719034`.

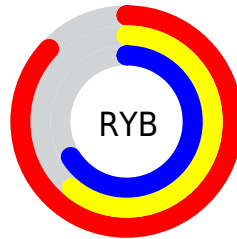
# Distribution



Red (87%)

Green (61%)

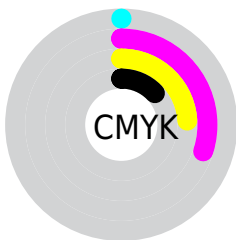
Blue (66%)



Red (87%)

Yellow (61%)

Blue (66%)

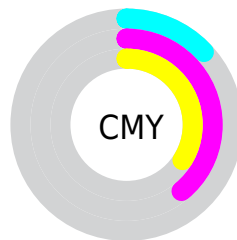


Cyan (0%)

Magenta (30%)

Yellow (24%)

Black (13%)



Cyan (13%)

Magenta (39%)

Yellow (34%)

# Brightness & Saturation Gradients

These gradients show how the Android color 4292713385 changes by changing the brightness by 10 percent. The first figure shows a shift by +10% for each color and the second figure -10%.

Similar to the brightness gradients but the following saturation gradients show a change of the Android color 4292713385 by changing the saturation by 10% instead.



 4292713385

 4292713385

4294967295

 4290871695

 4294955744

 4289030005

 4294962941

 4287188572

 4285478725

 4283768879

 4282124314

 4280877057

 4278190080

 4292713385

 4292713385

 4292707736

 4292719034

 4292702086

 4292724684

 4292696437

 4292730333

 4292690787

 4292735983

 4292684882

 4292739071

 4292679233

 4292673583

# Harmonies

## Analogous

The Analogous color harmony consists of three colors that are next to each other on the color wheel.



4291862209



4292713385



4292648594

# Triad

The Triadic color harmony groups three colors that are evenly spaced from another and form a triangle on the color wheel.



4292713385



4288656517



4285904344

# Complementary

The Complementary color scheme is a pair of colors which are on the opposite of each other on the color wheel.



4292713385



4288404943

# Split Complementary

Split-complementary colors differ from the complementary color scheme. The scheme consists of three colors, the original color and two neighbors of the complement color.



4284791240



4292713385



4286822808

# Square

The Square scheme is like the rectangle color scheme, but the four colors are evenly spaced on the color wheel.



4292713385



4290424188



4285316017



4287999709

# Rectangle

The Rectangle color scheme consists of four colors that form a rectangle on the color wheel.



4292713385



4292190854



4285316017



4285380564



# Sweetspot

The Sweet Spot groups the original color and five complimentary colors.



4292713385



4294961389



4291795933



4286607732



4278190080



4286611584



# Same Dimension

The Same Dimension uses a secret algorithm to generate beautiful new colors.



4292713385



4294943671



4292718235



4285424485



4289527845



4281204746



# Inverse Universe

The Inverse Universe completely reimagines the original color for something new.



4292713385



4294943671



4288400093



4285424485



4289527845



4281204746



# Previews

## White Background



This preview shows how the Android color 4292713385 looks on a white background.

## Color Contrast Check

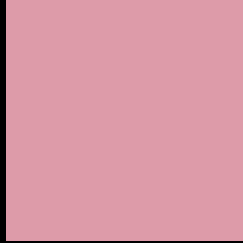
Large Text (above 18pt) WCAG AA × Fail

Any Text WCAG AA × Fail

Large Text (above 18pt) WCAG AAA × Fail

Any Text WCAG AAA × Fail

# Black Background



This preview shows how the Android color 4292713385 looks on a black background.

## Color Contrast Check

Large Text (above 18pt) WCAG AA ✓ Pass

Any Text WCAG AA ✓ Pass

Large Text (above 18pt) WCAG AAA ✓ Pass

Any Text WCAG AAA ✓ Pass

If you want to check with other color combinations, try the [Color Contrast Checker](#).



# Android 4292713385 Background



This preview shows how black text looks on a background with the Android color 4292713385.



This preview shows how white text looks on a background with the Android color 4292713385.

# Color Blindness Simulation

Color vision deficiency is a very complex topic, and I could not describe the different causes any better than Wikipedia does, so if you want to learn more, you should check out their [article about color blindness](#).


## Dichromacy



**Original Color**  
4292713385

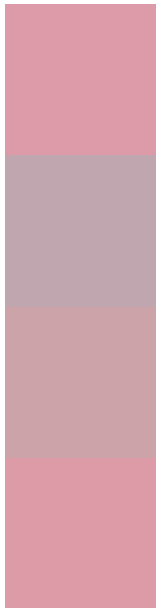
**Protanopia**  
4289703091

**Deuteranopia**  
4290815911



**Tritanopia**  
4292713383

# Trichromacy



**Original Color**  
4292713385

**Protanomaly**  
4290815663

**Deuteranomaly**  
4291535784

**Tritanomaly**  
4292713384

# Monochromacy



**Original Color**  
4292713385

**Achromatopsia**  
4289769648

**Achromatomaly**  
4290816173

# CSS Examples

## Text

The CSS property to change the color of the text to Android 4292713385 is called "color". The color property can be set on classes, ids or directly on the HTML element.

This example shows how text in the color `rgb(221, 155, 169)` looks like.

```
.text, #text, p{  
    color:rgb(221, 155, 169)  
}
```

If you want to add a text shadow in that color use the text-shadow property, you can generate a text shadow directly with our [CSS Text Shadow Generator](#).

Here you see how black text with a 4 pixel rgb(221, 155, 169) colored shadow looks like.

```
.shadow{ text-shadow: 4px 4px 2px rgb(221, 155, 169) }
```

## Border

The CSS property to change the border of an element to Android 4292713385 is called "border". The border property can be set on classes, ids or directly on the HTML element.

This example shows the color as border, it can be applied via the CSS property "border" or "border-color".

```
.border, #border, table{ border:4px solid rgb(221, 155, 169) }
```

If only the border color should be changed use the property `border-color`.

```
.border{ border-color:rgb(221, 155, 169) }
```

If you want to add a box shadow in that color use:

Here you see how a box with a 4 pixel `rgb(221, 155, 169)` colored shadow looks like.

```
.boxshadow{ -moz-box-shadow:4px 4px 4px  
4px rgb(221, 155, 169); -webkit-box-  
shadow:4px 4px 4px 4px rgb(221, 155, 169);  
box-shadow:4px 4px 4px 4px rgb(221, 155,  
169) }
```

# Background

The CSS property to change the background color of an element to Android 4292713385 is called "background". The background property can be set on classes, ids or directly on the HTML element.

```
.background, #background, body{  
background: rgb(221, 155, 169) }
```

If only the background color should be changed can be used:

```
.background{ background-color: rgb(221,  
155, 169) }
```

This example shows the color as background, it is applied via the CSS property "background".

To optimize and compress your CSS code, you can use our [online CSS compressor and optimizer](#) based on csstidy. If you want to create a linear or radial gradient as background or border, check our [CSS Gradient Generator](#).



Hey! You found this booklet interesting? Support Converting Colors with the new Membership Option!

The pro membership hides all ads, plus gives you double the colors in the color bucket, and more awesome pro features!

**[Learn more, Memberships starting at \\$2.50/m!](#)**

**Follow me  
on Twitter!**

@ConvertingColor