

Converting Colors

Android(4292714407)

Have a look what the booklet for
Android(4292714407) contains.

Android(4292714407)	3
<i>Conversions</i>	4
<i>Details</i>	6
<i>Harmonies</i>	11
<i>Previews</i>	23
<i>Color Blindness Simulation</i>	26
<i>CSS Examples</i>	29

Color

Android(4292714407)

Conversions

Conversions Part 1

Format	Color
Hex	DD9FA7
RGB	221, 159, 167
RGB Percent	87%, 62%, 65%
CMY	0.1333, 0.3765, 0.3451
CMYK	0.00, 0.28, 0.24, 0.13
HSL	352°, 48%, 75%
HSV	352°, 28%, 87%
XYZ	49.1920, 42.9584, 42.2583
YIQ	178.4500, 34.3840, 15.6320

Conversions

Conversions Part 2

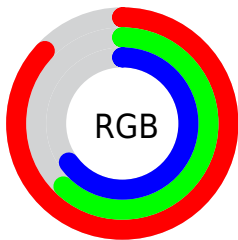
Format	Color
R_{YB}	221, 159, 167
Decimal	14524327
CIE _{Lab}	71.53, 24.17, 5.02
CIE _{LCh}	72, 24.687, 11.738
Yxy	42.9584, 0.3660, 0.3196
Android (android.graphics.Color)	4292714407 (0xFFDD9FA7)
YUV	178.4500, -5.6448, 37.3164
Hunter-Lab	65.5427, 19.2705, 7.6530

Details

The Android color `4292714407` is a light color, and the websafe version is hex `CC9999`. A complement of this color would be `4288667093`, and the grayscale version is `4289901234`.

A 20% lighter version of the original color is `4294956766`, and `4289031027` is the 20% darker color. If you saturate the color by 10%, you get `4292708756`, and if you desaturate by 10%, it is `4292720058`.

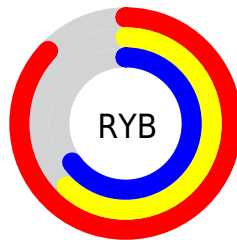
Distribution



Red (87%)

Green (62%)

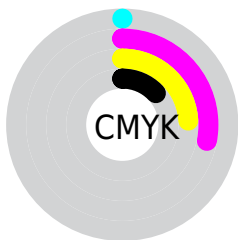
Blue (65%)



Red (87%)

Yellow (62%)

Blue (65%)

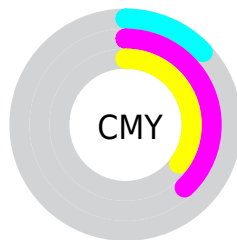


Cyan (0%)

Magenta (28%)

Yellow (24%)

Black (13%)



Cyan (13%)

Magenta (38%)

Yellow (35%)

Brightness & Saturation Gradients

These gradients show how the Android color 4292714407 changes by changing the brightness by 10 percent. The first figure shows a shift by +10% for each color and the second figure -10%.

Similar to the brightness gradients but the following saturation gradients show a change of the Android color 4292714407 by changing the saturation by 10% instead.

 4292714407

 4292714407

4294967295

 4290872717

 4294956766

 4289031027

 4294964219

 4287255131

 4285479747

 4283769901

 4282191129

 4280877056

 4278190080

 4292714407

 4292714407

 4292708756

 4292720058

 4292703105

 4292725709

 4292697453

 4292731361

 4292691802

 4292737012

 4292686151

 4292739071

 4292680244

 4292674592

 4292673565

Harmonies

Analogous

The Analogous color harmony consists of three colors that are next to each other on the color wheel.



4292059582



4292714407



4292518546

Triad

The Triadic color harmony groups three colors that are evenly spaced from another and form a triangle on the color wheel.



4292714407



4288526221



4286756313

Complementary

The Complementary color scheme is a pair of colors which are on the opposite of each other on the color wheel.



4292714407



4288667093

Split Complementary

Split-complementary colors differ from the complementary color scheme. The scheme consists of three colors, the original color and two neighbors of the complement color.



4285512396



4292714407



4286888864

Square

The Square scheme is like the rectangle color scheme, but the four colors are evenly spaced on the color wheel.



4292714407



4290228611



4285709496



4288720603

Rectangle

The Rectangle color scheme consists of four colors that form a rectangle on the color wheel.



4292714407



4291995528



4285709496



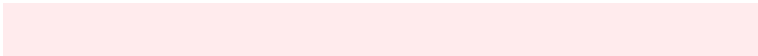
4286232534

Sweetspot

The Sweet Spot groups the original color and five complimentary colors.



4292714407



4294962157



4292190173



4286608244



4278190080



4286611584

Same Dimension

The Same Dimension uses a secret algorithm to generate beautiful new colors.



4292714407



4294944947



4292720287



4285424484



4289527830



4281204742

Inverse Universe

The Inverse Universe completely reimagines the original color for something new.



4292714407



4294944947



4288661213



4285424484



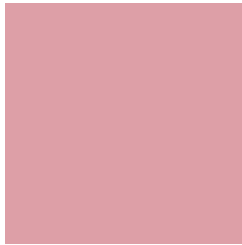
4289527830



4281204742

Previews

White Background



This preview shows how the Android color 4292714407 looks on a white background.

Color Contrast Check

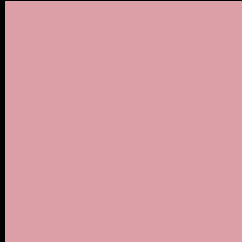
Large Text (above 18pt) WCAG AA × Fail

Any Text WCAG AA × Fail

Large Text (above 18pt) WCAG AAA × Fail

Any Text WCAG AAA × Fail

Black Background



This preview shows how the Android color 4292714407 looks on a black background.

Color Contrast Check

Large Text (above 18pt) WCAG AA ✓ Pass

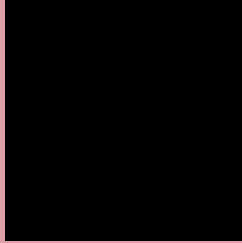
Any Text WCAG AA ✓ Pass

Large Text (above 18pt) WCAG AAA ✓ Pass

Any Text WCAG AAA ✓ Pass

If you want to check with other color combinations, try the [Color Contrast Checker](#).

Android 4292714407 Background



This preview shows how black text looks on a background with the Android color 4292714407.



This preview shows how white text looks on a background with the Android color 4292714407.

Color Blindness Simulation

Color vision deficiency is a very complex topic, and I could not describe the different causes any better than Wikipedia does, so if you want to learn more, you should check out their [article about color blindness](#).

Dichromacy



Original Color
4292714407

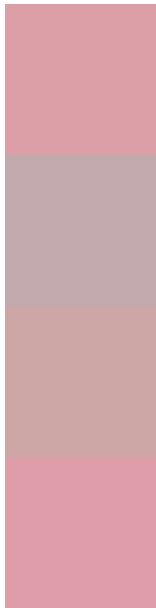
Protanopia
4289900464

Deuteranopia
4291078821



Tritanopia
4292714155

Trichromacy



Original Color
4292714407

Protanomaly
4290947501

Deuteranomaly
4291667622

Tritanomaly
4292714154

Monochromacy



Original Color
4292714407

Achromatopsia
4289901234

Achromatomaly
4290948014

CSS Examples

Text

The CSS property to change the color of the text to Android 4292714407 is called "color". The color property can be set on classes, ids or directly on the HTML element.

This example shows how text in the color `rgb(221, 159, 167)` looks like.

```
.text, #text, p{  
    color:rgb(221, 159, 167)  
}
```

If you want to add a text shadow in that color use the text-shadow property, you can generate a text shadow directly with our [CSS Text Shadow Generator](#).

Here you see how black text with a 4 pixel rgb(221, 159, 167) colored shadow looks like.

```
.shadow{ text-shadow: 4px 4px 2px rgb(221, 159, 167) }
```

Border

The CSS property to change the border of an element to Android 4292714407 is called "border". The border property can be set on classes, ids or directly on the HTML element.

This example shows the color as border, it can be applied via the CSS property "border" or "border-color".

```
.border, #border, table{ border:4px solid rgb(221, 159, 167) }
```

If only the border color should be changed use the property `border-color`.

```
.border{ border-color:rgb(221, 159, 167) }
```

If you want to add a box shadow in that color use:

Here you see how a box with a 4 pixel `rgb(221, 159, 167)` colored shadow looks like.

```
.boxshadow{ -moz-box-shadow:4px 4px 4px  
4px rgb(221, 159, 167); -webkit-box-  
shadow:4px 4px 4px 4px rgb(221, 159, 167);  
box-shadow:4px 4px 4px 4px rgb(221, 159,  
167) }
```

Background

The CSS property to change the background color of an element to Android 4292714407 is called "background". The background property can be set on classes, ids or directly on the HTML element.

```
.background, #background, body{  
background: rgb(221, 159, 167) }
```

If only the background color should be changed can be used:

```
.background{ background-color: rgb(221,  
159, 167) }
```

This example shows the color as background, it is applied via the CSS property "background".

To optimize and compress your CSS code, you can use our [online CSS compressor and optimizer](#) based on csstidy. If you want to create a linear or radial gradient as background or border, check our [CSS Gradient Generator](#).

Hey! You found this booklet interesting? Support Converting Colors with the new Membership Option!

The pro membership hides all ads, plus gives you double the colors in the color bucket, and more awesome pro features!

[Learn more, Memberships starting at \\$2.50/m!](#)

**Follow me
on Twitter!**

@ConvertingColor