

# Converting Colors

Android(4292714925)

Have a look what the booklet for  
Android(4292714925) contains.

<b>Android(4292714925)</b> .....	3
<i><b>Conversions</b></i> .....	4
<i><b>Details</b></i> .....	6
<i><b>Harmonies</b></i> .....	11
<i><b>Previews</b></i> .....	23
<i><b>Color Blindness Simulation</b></i> .....	26
<i><b>CSS Examples</b></i> .....	29

# **Color**

**Android(4292714925)**

# Conversions

## Conversions Part 1

Format	Color
Hex	DDA1AD
RGB	221, 161, 173
RGB Percent	87%, 63%, 68%
CMY	0.1333, 0.3686, 0.3216
CMYK	0.00, 0.27, 0.22, 0.13
HSL	348°, 47%, 75%
HSV	348°, 27%, 87%
XYZ	50.1065, 43.8790, 45.3638
YIQ	180.3080, 31.9080, 16.4520

# Conversions

## Conversions Part 2

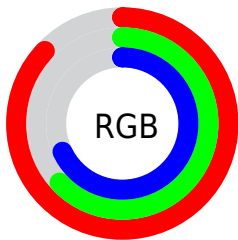
Format	Color
R <sub>Y</sub> B	221, 161, 173
Decimal	14524845
CIE Lab	72.15, 23.97, 2.60
CIE LCh	72, 24.108, 6.198
Yxy	43.8790, 0.3596, 0.3149
Android (android.graphics.Color)	4292714925 (0xFFDDA1AD)
YUV	180.3080, -3.6028, 35.6869
Hunter-Lab	66.2412, 19.0996, 5.7655

# Details

The Android color `4292714925` is a light color, and the websafe version is hex `CC9999`. A complement of this color would be `4288798161`, and the grayscale version is `4290032820`.

A 20% lighter version of the original color is `4294957284`, and `4289031545` is the 20% darker color. If you saturate the color by 10%, you get `4292709275`, and if you desaturate by 10%, it is `4292720575`.

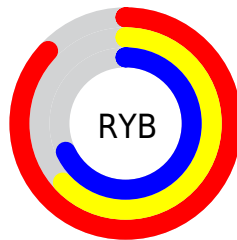
# Distribution



Red (87%)

Green (63%)

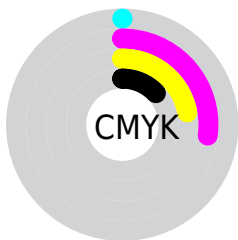
Blue (68%)



Red (87%)

Yellow (63%)

Blue (68%)

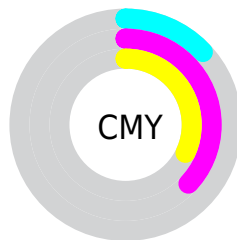


Cyan (0%)

Magenta (27%)

Yellow (22%)

Black (13%)



Cyan (13%)

Magenta (37%)

Yellow (32%)

# Brightness & Saturation Gradients

These gradients show how the Android color 4292714925 changes by changing the brightness by 10 percent. The first figure shows a shift by +10% for each color and the second figure -10%.

Similar to the brightness gradients but the following saturation gradients show a change of the Android color 4292714925 by changing the saturation by 10% instead.



 4292714925

 4292714925

4294967295

 4290873234

 4294957284

 4289031545

 4294964735

 4287255648

 4285545544

 4283835698

 4282191645

 4280877059

 4278190080

 4292714925

 4292714925

 4292709275

 4292720575

 4292703626

 4292726224

 4292697976

 4292731874

 4292692326

 4292737524

 4292686677

 4292739071

 4292680771

 4292675121

 4292673580

# Harmonies

## Analogous

The Analogous color harmony consists of three colors that are next to each other on the color wheel.



4291929027



4292714925



4292649880

# Triad

The Triadic color harmony groups three colors that are evenly spaced from another and form a triangle on the color wheel.



4292714925



4288984973



4286691545

# Complementary

The Complementary color scheme is a pair of colors which are on the opposite of each other on the color wheel.



4292714925



4288798161

# Split Complementary

Split-complementary colors differ from the complementary color scheme. The scheme consists of three colors, the original color and two neighbors of the complement color.



4285709514



4292714925



4287347870

# Square

The Square scheme is like the rectangle color scheme, but the four colors are evenly spaced on the color wheel.



4292714925



4290621829



4286102965



4288524764

# Rectangle

The Rectangle color scheme consists of four colors that form a rectangle on the color wheel.



4292714925



4292257677



4286102965



4286233301



# Sweetspot

The Sweet Spot groups the original color and five complimentary colors.



4292714925



4294962159



4291928541



4286608245



4278190080



4286611584



# Same Dimension

The Same Dimension uses a secret algorithm to generate beautiful new colors.



4292714925



4294945724



4292719521



4285424485



4289527843



4281204745



# Inverse Universe

The Inverse Universe completely reimagines the original color for something new.



4292714925



4294945724



4288793565



4285424485



4289527843



4281204745



# Previews

## White Background



This preview shows how the Android color 4292714925 looks on a white background.

## Color Contrast Check

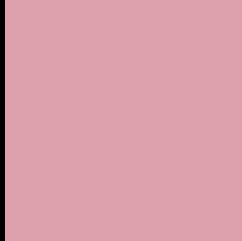
Large Text (above 18pt) WCAG AA × Fail

Any Text WCAG AA × Fail

Large Text (above 18pt) WCAG AAA × Fail

Any Text WCAG AAA × Fail

# Black Background



This preview shows how the Android color 4292714925 looks on a black background.

## Color Contrast Check

Large Text (above 18pt) WCAG AA ✓ Pass

Any Text WCAG AA ✓ Pass

Large Text (above 18pt) WCAG AAA ✓ Pass

Any Text WCAG AAA ✓ Pass

If you want to check with other color combinations, try the [Color Contrast Checker](#).



# Android 4292714925 Background



This preview shows how black text looks on a background with the Android color 4292714925.




This preview shows how white text looks on a background with the Android color 4292714925.

# Color Blindness Simulation

Color vision deficiency is a very complex topic, and I could not describe the different causes any better than Wikipedia does, so if you want to learn more, you should check out their [article about color blindness](#).

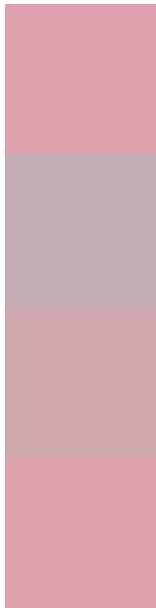
## Dichromacy





**Tritanopia**  
4292714925

# Trichromacy



**Original Color**  
4292714925

**Protanomaly**  
4290948019

**Deuteranomaly**  
4291733420

**Tritanomaly**  
4292714925

# Monochromacy



**Original Color**  
4292714925

**Achromatopsia**  
4290032820

**Achromatomaly**  
4291014065

# CSS Examples

## Text

The CSS property to change the color of the text to Android 4292714925 is called "color". The color property can be set on classes, ids or directly on the HTML element.

This example shows how text in the color `rgb(221, 161, 173)` looks like.

```
.text, #text, p{  
    color:rgb(221, 161, 173)  
}
```

If you want to add a text shadow in that color use the text-shadow property, you can generate a text shadow directly with our [CSS Text Shadow Generator](#).

Here you see how black text with a 4 pixel rgb(221, 161, 173) colored shadow looks like.

```
.shadow{ text-shadow: 4px 4px 2px rgb(221, 161, 173) }
```

## Border

The CSS property to change the border of an element to Android 4292714925 is called "border". The border property can be set on classes, ids or directly on the HTML element.

This example shows the color as border, it can be applied via the CSS property "border" or "border-color".

```
.border, #border, table{ border:4px solid rgb(221, 161, 173) }
```

If only the border color should be changed use the property `border-color`.

```
.border{ border-color:rgb(221, 161, 173) }
```

If you want to add a box shadow in that color use:

Here you see how a box with a 4 pixel `rgb(221, 161, 173)` colored shadow looks like.

```
.boxshadow{ -moz-box-shadow:4px 4px 4px  
4px rgb(221, 161, 173); -webkit-box-  
shadow:4px 4px 4px 4px rgb(221, 161, 173);  
box-shadow:4px 4px 4px 4px rgb(221, 161,  
173) }
```

# Background

The CSS property to change the background color of an element to Android 4292714925 is called "background". The background property can be set on classes, ids or directly on the HTML element.

```
.background, #background, body{  
background: rgb(221, 161, 173) }
```

If only the background color should be changed can be used:

```
.background{ background-color: rgb(221,  
161, 173) }
```

This example shows the color as background, it is applied via the CSS property "background".

To optimize and compress your CSS code, you can use our [online CSS compressor and optimizer](#) based on csstidy. If you want to create a linear or radial gradient as background or border, check our [CSS Gradient Generator](#).



Hey! You found this booklet interesting? Support Converting Colors with the new Membership Option!

The pro membership hides all ads, plus gives you double the colors in the color bucket, and more awesome pro features!

**[Learn more, Memberships starting at \\$2.50/m!](#)**

**Follow me  
on Twitter!**

@ConvertingColor