

# Converting Colors

Android(4292715953)

Have a look what the booklet for  
Android(4292715953) contains.

<b>Android(4292715953)</b> .....	3
<b><i>Conversions</i></b> .....	4
<b><i>Details</i></b> .....	6
<b><i>Harmonies</i></b> .....	11
<b><i>Previews</i></b> .....	23
<b><i>Color Blindness Simulation</i></b> .....	26
<b><i>CSS Examples</i></b> .....	29

# **Color**

**Android(4292715953)**

# Conversions

## Conversions Part 1

Format	Color
Hex	DDA5B1
RGB	221, 165, 177
RGB Percent	87%, 65%, 69%
CMY	0.1333, 0.3529, 0.3059
CMYK	0.00, 0.25, 0.20, 0.13
HSL	347°, 45%, 76%
HSV	347°, 25%, 87%
XYZ	51.2097, 45.4567, 47.6700
YIQ	183.1120, 29.5240, 15.6040

# Conversions

## Conversions Part 2

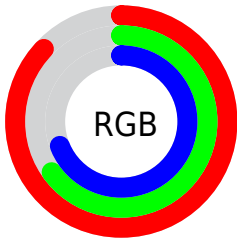
<b>Format</b>	<b>Color</b>
<b>R<sub>YB</sub></b>	221, 165, 177
Decimal	14525873
CIE <sub>Lab</sub>	73.19, 22.41, 1.91
CIE <sub>LCh</sub>	73, 22.491, 4.880
Yxy	45.4567, 0.3548, 0.3149
Android (android.graphics.Color)	4292715953 (0xFFDDA5B1)
YUV	183.1120, -3.0132, 33.2278
Hunter-Lab	67.4216, 17.5909, 5.2746

# Details

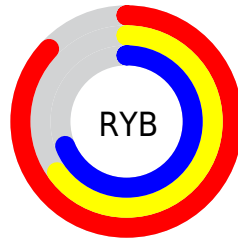
The Android color `4292715953` is a light color, and the websafe version is hex `CC9999`. A complement of this color would be `4289060305`, and the grayscale version is `4290230199`.

A 20% lighter version of the original color is `4294958313`, and `4289032573` is the 20% darker color. If you saturate the color by 10%, you get `4292710304`, and if you desaturate by 10%, it is `4292721602`.

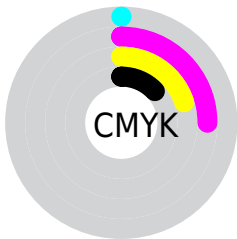
# Distribution



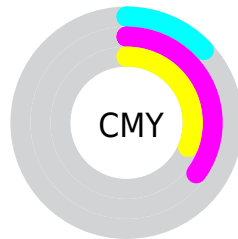
- Red (87%)
- Green (65%)
- Blue (69%)



- Red (87%)
- Yellow (65%)
- Blue (69%)



- Cyan (0%)
- Magenta (25%)
- Yellow (20%)
- Black (13%)



- Cyan (13%)
- Magenta (35%)
- Yellow (31%)

# Brightness & Saturation Gradients

These gradients show how the Android color 4292715953 changes by changing the brightness by 10 percent. The first figure shows a shift by +10% for each color and the second figure -10%.

Similar to the brightness gradients but the following saturation gradients show a change of the Android color 4292715953 by changing the saturation by 10% instead.



 4292715953

 4292715953

4294967295

 4290874006

 4294958313

 4289032573

 4294965759

 4287256676

 4285546572

 4283836725

 4282258208

 4280877064

 4278190080

 4292715953

 4292715953

 4292710304

 4292721602

 4292704654

 4292727252

 4292699005

 4292732901

 4292693356

 4292738550

 4292687706

 4292739071

 4292681801

 4292676151

 4292673583

# Harmonies

## Analogous

The Analogous color harmony consists of three colors that are next to each other on the color wheel.



4291930054



4292715953



4292716445

# Triad

The Triadic color harmony groups three colors that are evenly spaced from another and form a triangle on the color wheel.



4292715953



4289313426



4287085528

# Complementary

The Complementary color scheme is a pair of colors which are on the opposite of each other on the color wheel.



4292715953



4289060305

# Split Complementary

Split-complementary colors differ from the complementary color scheme. The scheme consists of three colors, the original color and two neighbors of the complement color.



4286234314



4292715953



4287807138

# Square

The Square scheme is like the rectangle color scheme, but the four colors are evenly spaced on the color wheel.



4292715953



4290818955



4286628022



4288722140

# Rectangle

The Rectangle color scheme consists of four colors that form a rectangle on the color wheel.



4292715953



4292323987



4286628022



4286692565



# Sweetspot

The Sweet Spot groups the original color and five complimentary colors.



4292715953



4294962159



4291929565



4286608245



4278190080



4286611584



# Same Dimension

The Same Dimension uses a secret algorithm to generate beautiful new colors.



4292715953



4294947779



4292720037



4285424485



4289527845



4281204746



# Inverse Universe

The Inverse Universe completely reimagines the original color for something new.



4292715953



4294947779



4289056221



4285424485



4289527845

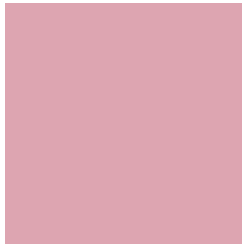


4281204746



# Previews

## White Background



This preview shows how the Android color 4292715953 looks on a white background.

## Color Contrast Check

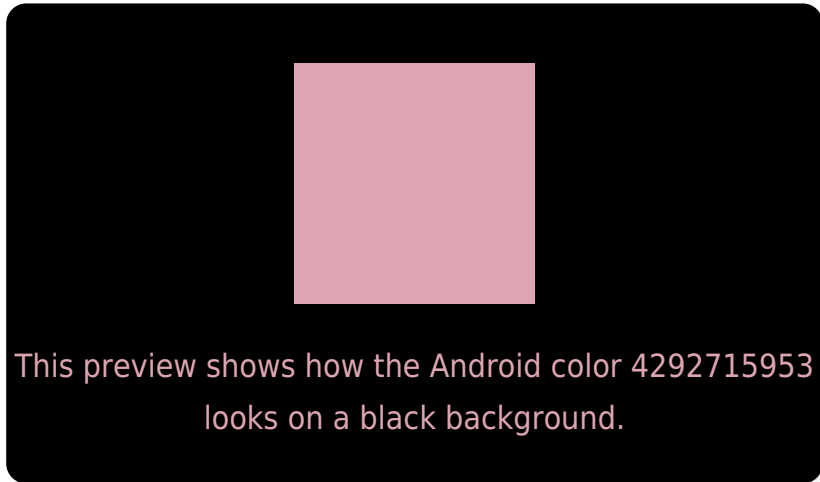
Large Text (above 18pt) WCAG AA × Fail

Any Text WCAG AA × Fail

Large Text (above 18pt) WCAG AAA × Fail

Any Text WCAG AAA × Fail

# Black Background



## Color Contrast Check

Large Text (above 18pt) WCAG AA ✓ Pass

Any Text WCAG AA ✓ Pass

Large Text (above 18pt) WCAG AAA ✓ Pass

Any Text WCAG AAA ✓ Pass

If you want to check with other color combinations, try the [Color Contrast Checker](#).



# Android 4292715953 Background



This preview shows how black text looks on a background with the Android color 4292715953.




This preview shows how white text looks on a background with the Android color 4292715953.

# Color Blindness Simulation

Color vision deficiency is a very complex topic, and I could not describe the different causes any better than Wikipedia does, so if you want to learn more, you should check out their [article about color blindness](#).

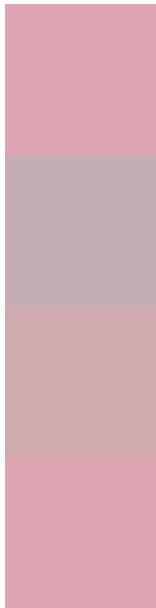
## Dichromacy





**Tritanopia**  
4292715954

# Trichromacy



**Original Color**  
4292715953

**Protanomaly**  
4291079862

**Deuteranomaly**  
4291799984

**Tritanomaly**  
4292715954

# Monochromacy



**Original Color**  
4292715953

**Achromatopsia**  
4290230199

**Achromatomaly**  
4291145909

# CSS Examples

## Text

The CSS property to change the color of the text to Android 4292715953 is called "color". The color property can be set on classes, ids or directly on the HTML element.

This example shows how text in the color `rgb(221, 165, 177)` looks like.

```
.text, #text, p{  
    color:rgb(221, 165, 177)  
}
```

If you want to add a text shadow in that color use the text-shadow property, you can generate a text shadow directly with our [CSS Text Shadow Generator](#).

Here you see how black text with a 4 pixel rgb(221, 165, 177) colored shadow looks like.

```
.shadow{ text-shadow: 4px 4px 2px rgb(221, 165, 177) }
```

## Border

The CSS property to change the border of an element to Android 4292715953 is called "border". The border property can be set on classes, ids or directly on the HTML element.

This example shows the color as border, it can be applied via the CSS property "border" or "border-color".

```
.border, #border, table{ border:4px solid rgb(221, 165, 177) }
```

If only the border color should be changed use the property `border-color`.

```
.border{ border-color:rgb(221, 165, 177) }
```

If you want to add a box shadow in that color use:

Here you see how a box with a 4 pixel `rgb(221, 165, 177)` colored shadow looks like.

```
.boxshadow{ -moz-box-shadow:4px 4px 4px  
4px rgb(221, 165, 177); -webkit-box-  
shadow:4px 4px 4px 4px rgb(221, 165, 177);  
box-shadow:4px 4px 4px 4px rgb(221, 165,  
177) }
```

# Background

The CSS property to change the background color of an element to Android 4292715953 is called "background". The background property can be set on classes, ids or directly on the HTML element.

```
.background, #background, body{  
background: rgb(221, 165, 177) }
```

If only the background color should be changed can be used:

```
.background{ background-color: rgb(221,  
165, 177) }
```

This example shows the color as background, it is applied via the CSS property "background".

To optimize and compress your CSS code, you can use our [online CSS compressor and optimizer](#) based on csstidy. If you want to create a linear or radial gradient as background or border, check our [CSS Gradient Generator](#).



Hey! You found this booklet interesting? Support Converting Colors with the new Membership Option!

The pro membership hides all ads, plus gives you double the colors in the color bucket, and more awesome pro features!

**[Learn more, Memberships starting at \\$2.50/m!](#)**

**Follow me  
on Twitter!**

@ConvertingColor