

# Converting Colors

Android(4292716695)

Have a look what the booklet for  
Android(4292716695) contains.

<b>Android(4292716695)</b> .....	3
<b><i>Conversions</i></b> .....	4
<b><i>Details</i></b> .....	6
<b><i>Harmonies</i></b> .....	11
<b><i>Previews</i></b> .....	23
<b><i>Color Blindness Simulation</i></b> .....	26
<b><i>CSS Examples</i></b> .....	29

# **Color**

**Android(4292716695)**

# Conversions

## Conversions Part 1

<b>Format</b>	<b>Color</b>
Hex	DDA897
RGB	221, 168, 151
RGB Percent	87%, 66%, 59%
CMY	0.1333, 0.3412, 0.4078
CMYK	0.00, 0.24, 0.32, 0.13
HSL	15°, 51%, 73%
HSV	15°, 32%, 87%
XYZ	49.4073, 45.6118, 35.4781
YIQ	181.9090, 37.0450, 5.9490

# Conversions

## Conversions Part 2

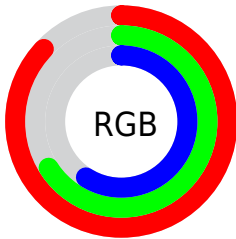
Format	Color
<a href="#">RYB</a>	<a href="#">221, 173, 151</a>
Decimal	<a href="#">14526615</a>
CIELab	<a href="#">73.29, 17.14, 16.33</a>
CIELCh	<a href="#">73, 23.675, 43.606</a>
Yxy	<a href="#">45.6118, 0.3786, 0.3495</a>
Android (android.graphics.Color)	<a href="#">4292716695</a> ( <a href="#">0xFFDDA897</a> )
YUV	<a href="#">181.9090, -15.2381, 34.2828</a>
Hunter-Lab	<a href="#">67.5365, 12.3955, 16.1295</a>

# Details

The Android color `4292716695` is a light color, and the websafe version is hex `CC9999`. A complement of this color would be `4288138461`, and the grayscale version is `4290164406`.

A 20% lighter version of the original color is `4294959053`, and `4289033316` is the 20% darker color. If you saturate the color by 10%, you get `4292712321`, and if you desaturate by 10%, it is `4292721069`.

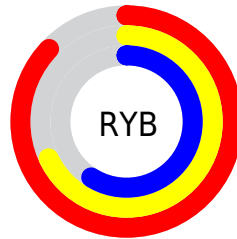
# Distribution



Red (87%)

Green (66%)

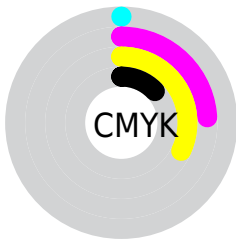
Blue (59%)



Red (87%)

Yellow (68%)

Blue (59%)

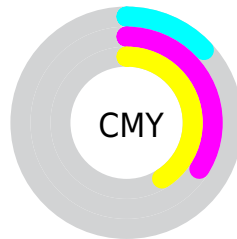


Cyan (0%)

Magenta (24%)

Yellow (32%)

Black (13%)



Cyan (13%)

Magenta (34%)

Yellow (41%)

# Brightness & Saturation Gradients

These gradients show how the Android color 4292716695 changes by changing the brightness by 10 percent. The first figure shows a shift by +10% for each color and the second figure -10%.

Similar to the brightness gradients but the following saturation gradients show a change of the Android color 4292716695 by changing the saturation by 10% instead.



 4292716695

 4292716695

4294967295

 4290809213

 4294959053

 4289033316

 4294966505

 4287191884

 4285481781

 4283772192

 4282128137

 4280680448

 4278190080

 4292716695

 4292716695

 4292712321

 4292721069

 4292708203

 4292725187

 4292703829

 4292729561

 4292699455

 4292733935

 4292695081

 4292738303

 4292690962

 4292739071

 4292687360

# Harmonies

## Analogous

The Analogous color harmony consists of three colors that are next to each other on the color wheel.



4292978091



4292716695



4291800971

# Triad

The Triadic color harmony groups three colors that are evenly spaced from another and form a triangle on the color wheel.



4292716695



4287283111



4289246174

# Complementary

The Complementary color scheme is a pair of colors which are on the opposite of each other on the color wheel.



4292716695



4288138461

# Split Complementary

Split-complementary colors differ from the complementary color scheme. The scheme consists of three colors, the original color and two neighbors of the complement color.



4287347421



4292716695



4286169277

# Square

The Square scheme is like the rectangle color scheme, but the four colors are evenly spaced on the color wheel.



4292716695



4288789652



4286103249



4291079123

# Rectangle

The Rectangle color scheme consists of four colors that form a rectangle on the color wheel.



4292716695



4290950025



4286103249



4288591327

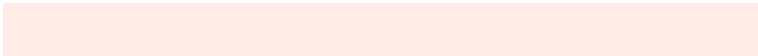


# Sweetspot

The Sweet Spot groups the original color and five complimentary colors.



4292716695



4294962406



4292712397



4286608496



4278190080



4286611584



# Same Dimension

The Same Dimension uses a secret algorithm to generate beautiful new colors.



4292716695



4294948510



4292725399



4285424995



4289538560



4281207552

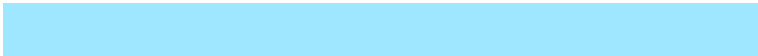


# Inverse Universe

The Inverse Universe completely reimagines the original color for something new.



4288138461



4288604159



4288129757



4284705646



4278223789



4278199086



# Previews

## White Background



This preview shows how the Android color 4292716695 looks on a white background.

## Color Contrast Check

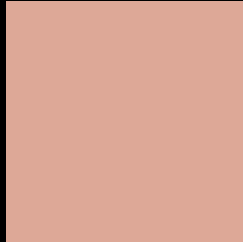
Large Text (above 18pt) WCAG AA × Fail

Any Text WCAG AA × Fail

Large Text (above 18pt) WCAG AAA × Fail

Any Text WCAG AAA × Fail

# Black Background



This preview shows how the Android color 4292716695 looks on a black background.

## Color Contrast Check

Large Text (above 18pt) WCAG AA ✓ Pass

Any Text WCAG AA ✓ Pass

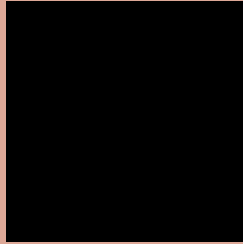
Large Text (above 18pt) WCAG AAA ✓ Pass

Any Text WCAG AAA ✓ Pass

If you want to check with other color combinations, try the [Color Contrast Checker](#).



# Android 4292716695 Background



This preview shows how black text looks on a background with the Android color 4292716695.




This preview shows how white text looks on a background with the Android color 4292716695.

# Color Blindness Simulation

Color vision deficiency is a very complex topic, and I could not describe the different causes any better than Wikipedia does, so if you want to learn more, you should check out their [article about color blindness](#).

## Dichromacy





**Tritanopia**  
4292912305

# Trichromacy



**Original Color**  
4292716695

**Protanomaly**  
4291408027

**Deuteranomaly**  
4292193174

**Tritanomaly**  
4292847016

# Monochromacy



**Original Color**  
4292716695

**Achromatopsia**  
4290164406

**Achromatomaly**  
4291080619

# CSS Examples

## Text

The CSS property to change the color of the text to Android 4292716695 is called "color". The color property can be set on classes, ids or directly on the HTML element.

This example shows how text in the color `rgb(221, 168, 151)` looks like.

```
.text, #text, p{  
    color:rgb(221, 168, 151)  
}
```

If you want to add a text shadow in that color use the text-shadow property, you can generate a text shadow directly with our [CSS Text Shadow Generator](#).

Here you see how black text with a 4 pixel rgb(221, 168, 151) colored shadow looks like.

```
.shadow{ text-shadow: 4px 4px 2px rgb(221, 168, 151) }
```

## Border

The CSS property to change the border of an element to Android 4292716695 is called "border". The border property can be set on classes, ids or directly on the HTML element.

This example shows the color as border, it can be applied via the CSS property "border" or "border-color".

```
.border, #border, table{ border:4px solid rgb(221, 168, 151) }
```

If only the border color should be changed use the property `border-color`.

```
.border{ border-color:rgb(221, 168, 151) }
```

If you want to add a box shadow in that color use:

Here you see how a box with a 4 pixel `rgb(221, 168, 151)` colored shadow looks like.

```
.boxshadow{ -moz-box-shadow:4px 4px 4px 4px rgb(221, 168, 151); -webkit-box-shadow:4px 4px 4px 4px rgb(221, 168, 151); box-shadow:4px 4px 4px 4px rgb(221, 168, 151) }
```

# Background

The CSS property to change the background color of an element to Android 4292716695 is called "background". The background property can be set on classes, ids or directly on the HTML element.

```
.background, #background, body{  
background: rgb(221, 168, 151) }
```

If only the background color should be changed can be used:

```
.background{ background-color: rgb(221,  
168, 151) }
```

This example shows the color as background, it is applied via the CSS property "background".

To optimize and compress your CSS code, you can use our [online CSS compressor and optimizer](#) based on csstidy. If you want to create a linear or radial gradient as background or border, check our [CSS Gradient Generator](#).



Hey! You found this booklet interesting? Support Converting Colors with the new Membership Option!

The pro membership hides all ads, plus gives you double the colors in the color bucket, and more awesome pro features!

**[Learn more, Memberships starting at \\$2.50/m!](#)**

**Follow me  
on Twitter!**

@ConvertingColor