

# Converting Colors

Android(4292721065)

Have a look what the booklet for  
Android(4292721065) contains.

<b>Android(4292721065)</b> .....	3
<b><i>Conversions</i></b> .....	4
<b><i>Details</i></b> .....	6
<b><i>Harmonies</i></b> .....	11
<b><i>Previews</i></b> .....	23
<b><i>Color Blindness Simulation</i></b> .....	26
<b><i>CSS Examples</i></b> .....	29

# **Color**

**Android(4292721065)**

# Conversions

## Conversions Part 1

Format	Color
Hex	DDB9A9
RGB	221, 185, 169
RGB Percent	87%, 73%, 66%
CMY	0.1333, 0.2745, 0.3373
CMYK	0.00, 0.16, 0.24, 0.13
HSL	18°, 43%, 76%
HSV	18°, 24%, 87%
XYZ	54.3292, 52.9346, 44.8901
YIQ	193.9400, 26.5920, 2.6560

# Conversions

## Conversions Part 2

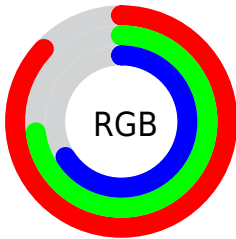
Format	Color
R <sub>Y</sub> B	221, 192, 169
Decimal	14530985
CIE Lab	77.84, 10.49, 12.93
CIE LCh	78, 16.651, 50.959
Yxy	52.9346, 0.3571, 0.3479
Android (android.graphics.Color)	4292721065 (0xFFDDB9A9)
YUV	193.9400, -12.2954, 23.7316
Hunter-Lab	72.7562, 5.9678, 14.3478

# Details

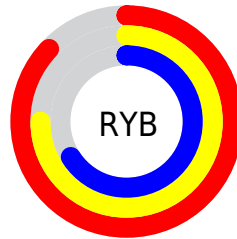
The Android color `4292721065` is a light color, and the websafe version is hex `FFCCCC`. A complement of this color would be `4289318365`, and the grayscale version is `4290953922`.

A 20% lighter version of the original color is `4294963680`, and `4289037429` is the 20% darker color. If you saturate the color by 10%, you get `4292717203`, and if you desaturate by 10%, it is `4292724927`.

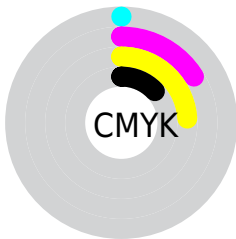
# Distribution



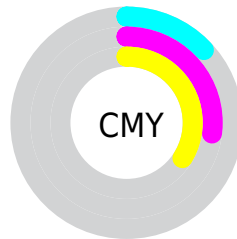
- Red (87%)
- Green (73%)
- Blue (66%)



- Red (87%)
- Yellow (75%)
- Blue (66%)



- Cyan (0%)
- Magenta (16%)
- Yellow (24%)
- Black (13%)



- Cyan (13%)
- Magenta (27%)
- Yellow (34%)

# Brightness & Saturation Gradients

These gradients show how the Android color 4292721065 changes by changing the brightness by 10 percent. The first figure shows a shift by +10% for each color and the second figure -10%.

Similar to the brightness gradients but the following saturation gradients show a change of the Android color 4292721065 by changing the saturation by 10% instead.





4292721065



4292721065

4294967295



4290879119



4294963680



4289037429

4294967293



4287261532



4285551173



4283906862



4282328345



4280881408



4278386688



4278190080

 4292721065

 4292721065

 4292717203

 4292724927

 4292713085

 4292729045

 4292709223

 4292732907

 4292705361

 4292736767

 4292701242

 4292739071

 4292697380

 4292693518

 4292690944

# Harmonies

## Analogous

The Analogous color harmony consists of three colors that are next to each other on the color wheel.



4292982454



4292721065



4291935906

# Triad

The Triadic color harmony groups three colors that are evenly spaced from another and form a triangle on the color wheel.



4292721065



4288727483



4290625245

# Complementary

The Complementary color scheme is a pair of colors which are on the opposite of each other on the color wheel.



4292721065



4289318365

# Split Complementary

Split-complementary colors differ from the complementary color scheme. The scheme consists of three colors, the original color and two neighbors of the complement color.



4289381342



4292721065



4288203211

# Square

The Square scheme is like the rectangle color scheme, but the four colors are evenly spaced on the color wheel.



4292721065



4289709997



4288464856



4291869140

# Rectangle

The Rectangle color scheme consists of four colors that form a rectangle on the color wheel.



4292721065



4291281314



4288464856



4290232542

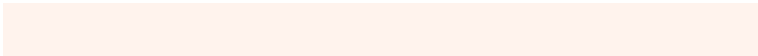


# Sweetspot

The Sweet Spot groups the original color and five complimentary colors.



4292721065



4294964205



4292717005



4286609525



4278190080



4286611584



# Same Dimension

The Same Dimension uses a secret algorithm to generate beautiful new colors.



4292721065



4294954680



4292727721



4285425251



4289541376



4281208320

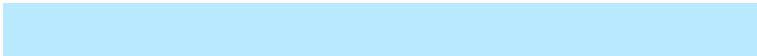


# Inverse Universe

The Inverse Universe completely reimagines the original color for something new.



4289318365



4290308607



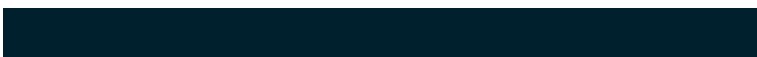
4289311709



4284705390



4278220973



4278198318



# Previews

## White Background



This preview shows how the Android color 4292721065 looks on a white background.

## Color Contrast Check

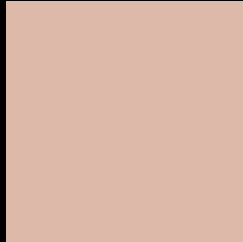
Large Text (above 18pt) WCAG AA × Fail

Any Text WCAG AA × Fail

Large Text (above 18pt) WCAG AAA × Fail

Any Text WCAG AAA × Fail

# Black Background



This preview shows how the Android color 4292721065 looks on a black background.

## Color Contrast Check

Large Text (above 18pt) WCAG AA ✓ Pass

Any Text WCAG AA ✓ Pass

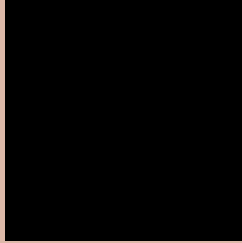
Large Text (above 18pt) WCAG AAA ✓ Pass

Any Text WCAG AAA ✓ Pass

If you want to check with other color combinations, try the [Color Contrast Checker](#).



# Android 4292721065 Background



This preview shows how black text looks on a background with the Android color 4292721065.



This preview shows how white text looks on a background with the Android color 4292721065.

# Color Blindness Simulation

Color vision deficiency is a very complex topic, and I could not describe the different causes any better than Wikipedia does, so if you want to learn more, you should check out their [article about color blindness](#).


## Dichromacy



**Original Color**  
4292721065

**Protanopia**  
4291412141

**Deuteranopia**  
4292655529



**Tritanopia**  
4292916675

# Trichromacy



**Original Color**  
4292721065

**Protanomaly**  
4291870124

**Deuteranomaly**  
4292655529

**Tritanomaly**  
4292851386

# Monochromacy



**Original Color**  
4292721065

**Achromatopsia**  
4290953922

**Achromatomaly**  
4291608505

# CSS Examples

## Text

The CSS property to change the color of the text to Android 4292721065 is called "color". The color property can be set on classes, ids or directly on the HTML element.

This example shows how text in the color `rgb(221, 185, 169)` looks like.

```
.text, #text, p{  
    color:rgb(221, 185, 169)  
}
```

If you want to add a text shadow in that color use the text-shadow property, you can generate a text shadow directly with our [CSS Text Shadow Generator](#).

Here you see how black text with a 4 pixel rgb(221, 185, 169) colored shadow looks like.

```
.shadow{ text-shadow: 4px 4px 2px rgb(221, 185, 169) }
```

## Border

The CSS property to change the border of an element to Android 4292721065 is called "border". The border property can be set on classes, ids or directly on the HTML element.

This example shows the color as border, it can be applied via the CSS property "border" or "border-color".

```
.border, #border, table{ border:4px solid rgb(221, 185, 169) }
```

If only the border color should be changed use the property `border-color`.

```
.border{ border-color:rgb(221, 185, 169) }
```

If you want to add a box shadow in that color use:

Here you see how a box with a 4 pixel `rgb(221, 185, 169)` colored shadow looks like.

```
.boxshadow{ -moz-box-shadow:4px 4px 4px  
4px rgb(221, 185, 169); -webkit-box-  
shadow:4px 4px 4px 4px rgb(221, 185, 169);  
box-shadow:4px 4px 4px 4px rgb(221, 185,  
169) }
```

# Background

The CSS property to change the background color of an element to Android 4292721065 is called "background". The background property can be set on classes, ids or directly on the HTML element.

```
.background, #background, body{  
background: rgb(221, 185, 169) }
```

If only the background color should be changed can be used:

```
.background{ background-color: rgb(221,  
185, 169) }
```

This example shows the color as background, it is applied via the CSS property "background".

To optimize and compress your CSS code, you can use our [online CSS compressor and optimizer](#) based on csstidy. If you want to create a linear or radial gradient as background or border, check our [CSS Gradient Generator](#).



Hey! You found this booklet interesting? Support Converting Colors with the new Membership Option!

The pro membership hides all ads, plus gives you double the colors in the color bucket, and more awesome pro features!

**[Learn more, Memberships starting at \\$2.50/m!](#)**

**Follow me  
on Twitter!**

@ConvertingColor