

# Converting Colors

Android(4292721595)

Have a look what the booklet for  
Android(4292721595) contains.

<b>Android(4292721595)</b> .....	3
<b><i>Conversions</i></b> .....	4
<b><i>Details</i></b> .....	6
<b><i>Harmonies</i></b> .....	11
<b><i>Previews</i></b> .....	23
<b><i>Color Blindness Simulation</i></b> .....	26
<b><i>CSS Examples</i></b> .....	29

# **Color**

**Android(4292721595)**

# Conversions

## Conversions Part 1

<b>Format</b>	<b>Color</b>
Hex	DDBBBB
RGB	221, 187, 187
RGB Percent	87%, 73%, 73%
CMY	0.1333, 0.2667, 0.2667
CMYK	0.00, 0.15, 0.15, 0.13
HSL	0°, 33%, 80%
HSV	0°, 15%, 87%
XYZ	56.5588, 54.5007, 54.5524
YIQ	197.1660, 20.2640, 7.2080

# Conversions

## Conversions Part 2

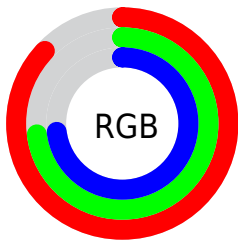
<b>Format</b>	<b>Color</b>
R <sub>Y</sub> B	221, 187, 187
Decimal	14531515
CIE Lab	78.75, 12.14, 4.52
CIE LCh	79, 12.953, 20.419
Yxy	54.5007, 0.3415, 0.3291
Android (android.graphics.Color)	4292721595 (0xFFDDBBBB)
YUV	197.1660, -5.0118, 20.9024
Hunter-Lab	73.8246, 7.5601, 7.8650

# Details

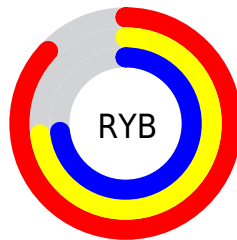
The Android color `4292721595` is a light color, and the websafe version is hex `FFCCCC`. A complement of this color would be `4290502109`, and the grayscale version is `4291151301`.

A 20% lighter version of the original color is `4294964211`, and `4289103494` is the 20% darker color. If you saturate the color by 10%, you get `4292715941`, and if you desaturate by 10%, it is `4292727249`.

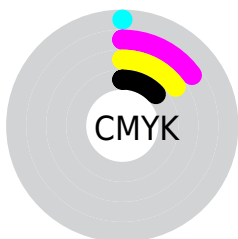
# Distribution



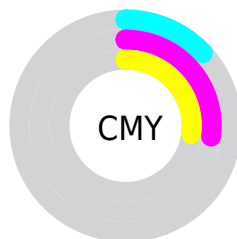
- Red (87%)
- Green (73%)
- Blue (73%)



- Red (87%)
- Yellow (73%)
- Blue (73%)



- Cyan (0%)
- Magenta (15%)
- Yellow (15%)
- Black (13%)



- Cyan (13%)
- Magenta (27%)
- Yellow (27%)

# Brightness & Saturation Gradients

These gradients show how the Android color 4292721595 changes by changing the brightness by 10 percent. The first figure shows a shift by +10% for each color and the second figure -10%.

Similar to the brightness gradients but the following saturation gradients show a change of the Android color 4292721595 by changing the saturation by 10% instead.



 4292721595

 4292721595

4294967295

 4290879648

 4294964211

 4289103494

 4287327341

 4285617236

 4283972925

 4282394408

 4280947219

 4279238656

 4278190080

 4292721595

 4292721595

 4292715941

 4292727249

 4292710287

 4292732903

 4292704633

 4292738557

 4292698979

 4292739071

 4292693325

 4292687414

 4292681760

 4292676106

 4292673536

# Harmonies

## Analogous

The Analogous color harmony consists of three colors that are next to each other on the color wheel.



4292459463



4292721595



4292525489

# Triad

The Triadic color harmony groups three colors that are evenly spaced from another and form a triangle on the color wheel.



4292721595



4290169011



4289906138

# Complementary

The Complementary color scheme is a pair of colors which are on the opposite of each other on the color wheel.



4292721595



4290502109

# Split Complementary

Split-complementary colors differ from the complementary color scheme. The scheme consists of three colors, the original color and two neighbors of the complement color.



4289186005



4292721595



4289383102

# Square

The Square scheme is like the rectangle color scheme, but the four colors are evenly spaced on the color wheel.



4292721595



4291085740



4289055435



4290888153

# Rectangle

The Rectangle color scheme consists of four colors that form a rectangle on the color wheel.



4292721595



4292132781



4289055435



4289644249

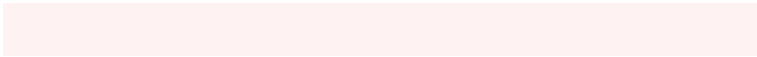


# Sweetspot

The Sweet Spot groups the original color and five complimentary colors.



4292721595



4294963954



4292721629



4286609528



4278190080



4286611584



# Same Dimension

The Same Dimension uses a secret algorithm to generate beautiful new colors.



4292721595



4294955473



4292725947



4285424483



4289527808



4281204736



# Inverse Universe

The Inverse Universe completely reimagines the original color for something new.



4290502109



4291952639



4290497757



4284706414



4278234541

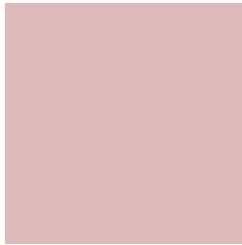


4278201902



# Previews

## White Background



This preview shows how the Android color 4292721595 looks on a white background.

## Color Contrast Check

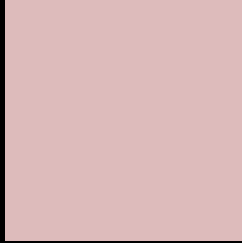
Large Text (above 18pt) WCAG AA × Fail

Any Text WCAG AA × Fail

Large Text (above 18pt) WCAG AAA × Fail

Any Text WCAG AAA × Fail

# Black Background



This preview shows how the Android color 4292721595 looks on a black background.

## Color Contrast Check

Large Text (above 18pt) WCAG AA ✓ Pass

Any Text WCAG AA ✓ Pass

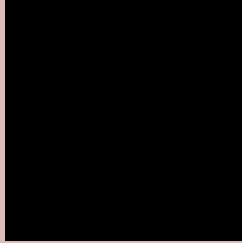
Large Text (above 18pt) WCAG AAA ✓ Pass

Any Text WCAG AAA ✓ Pass

If you want to check with other color combinations, try the [Color Contrast Checker](#).



# Android 4292721595 Background



This preview shows how black text looks on a background with the Android color 4292721595.



This preview shows how white text looks on a background with the Android color 4292721595.

# Color Blindness Simulation

Color vision deficiency is a very complex topic, and I could not describe the different causes any better than Wikipedia does, so if you want to learn more, you should check out their [article about color blindness](#).


## Dichromacy



**Original Color**  
4292721595

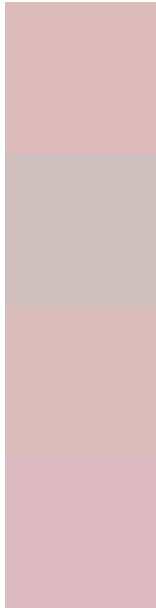
**Protanopia**  
4291281599

**Deuteranopia**  
4292459963



**Tritanopia**  
4292852167

# Trichromacy



**Original Color**  
4292721595

**Protanomaly**  
4291805118

**Deuteranomaly**  
4292525243

**Tritanomaly**  
4292786883

# Monochromacy



**Original Color**  
4292721595

**Achromatopsia**  
4291151301

**Achromatomaly**  
4291740097

# CSS Examples

## Text

The CSS property to change the color of the text to Android 4292721595 is called "color". The color property can be set on classes, ids or directly on the HTML element.

This example shows how text in the color `rgb(221, 187, 187)` looks like.

```
.text, #text, p{  
    color:rgb(221, 187, 187)  
}
```

If you want to add a text shadow in that color use the text-shadow property, you can generate a text shadow directly with our [CSS Text Shadow Generator](#).

Here you see how black text with a 4 pixel rgb(221, 187, 187) colored shadow looks like.

```
.shadow{ text-shadow: 4px 4px 2px rgb(221, 187, 187) }
```

## Border

The CSS property to change the border of an element to Android 4292721595 is called "border". The border property can be set on classes, ids or directly on the HTML element.

This example shows the color as border, it can be applied via the CSS property "border" or "border-color".

```
.border, #border, table{ border:4px solid rgb(221, 187, 187) }
```

If only the border color should be changed use the property `border-color`.

```
.border{ border-color:rgb(221, 187, 187) }
```

If you want to add a box shadow in that color use:

Here you see how a box with a 4 pixel `rgb(221, 187, 187)` colored shadow looks like.

```
.boxshadow{ -moz-box-shadow:4px 4px 4px  
4px rgb(221, 187, 187); -webkit-box-  
shadow:4px 4px 4px 4px rgb(221, 187, 187);  
box-shadow:4px 4px 4px 4px rgb(221, 187,  
187) }
```

# Background

The CSS property to change the background color of an element to Android 4292721595 is called "background". The background property can be set on classes, ids or directly on the HTML element.

```
.background, #background, body{  
background: rgb(221, 187, 187) }
```

If only the background color should be changed can be used:

```
.background{ background-color: rgb(221,  
187, 187) }
```

This example shows the color as background, it is applied via the CSS property "background".

To optimize and compress your CSS code, you can use our [online CSS compressor and optimizer](#) based on csstidy. If you want to create a linear or radial gradient as background or border, check our [CSS Gradient Generator](#).



Hey! You found this booklet interesting? Support Converting Colors with the new Membership Option!

The pro membership hides all ads, plus gives you double the colors in the color bucket, and more awesome pro features!

**[Learn more, Memberships starting at \\$2.50/m!](#)**

**Follow me  
on Twitter!**

@ConvertingColor