

Converting Colors

Android(4292721844)

Have a look what the booklet for
Android(4292721844) contains.

| | |
|--|----|
| Android(4292721844) | 3 |
| <i>Conversions</i> | 4 |
| <i>Details</i> | 6 |
| <i>Harmonies</i> | 11 |
| <i>Previews</i> | 23 |
| <i>Color Blindness Simulation</i> | 26 |
| <i>CSS Examples</i> | 29 |

Color

Android(4292721844)

Conversions

Conversions Part 1

| Format | Color |
|-------------|---------------------------|
| Hex | DDBCBA |
| RGB | 221, 188, 180 |
| RGB Percent | 87%, 74%, 71% |
| CMY | 0.1333, 0.2627, 0.2941 |
| CMYK | 0.00, 0.15, 0.19, 0.13 |
| HSL | 12°, 38%, 79% |
| HSV | 12°, 19%, 87% |
| XYZ | 56.0402, 54.6339, 50.7718 |
| YIQ | 196.9550, 22.2360, 4.5080 |

Conversions

Conversions Part 2

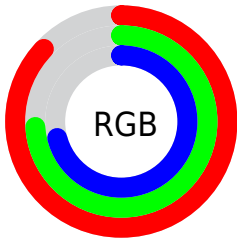
| Format | Color |
|-------------------------------------|---|
| R_{YB} | 221, 190, 180 |
| Decimal | 14531764 |
| CIE _{Lab} | 78.83, 10.52, 8.41 |
| CIE _{LCh} | 79, 13.466, 38.646 |
| Yxy | 54.6339, 0.3471, 0.3384 |
| Android (android.graphics.Color) | 4292721844 (0xFFDDBC _{B4}) |
| YUV | 196.9550, -8.3588, 21.0875 |
| Hunter-Lab | 73.9147, 5.9833, 11.0142 |

Details

The Android color `4292721844` is a light color, and the websafe version is hex `FFCCCC`. A complement of this color would be `4290041309`, and the grayscale version is `4291151301`.

A 20% lighter version of the original color is `4294964460`, and `4289038207` is the 20% darker color. If you saturate the color by 10%, you get `4292717214`, and if you desaturate by 10%, it is `4292726474`.

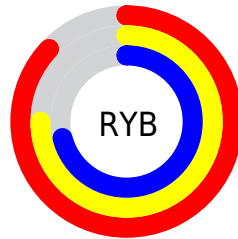
Distribution



Red (87%)

Green (74%)

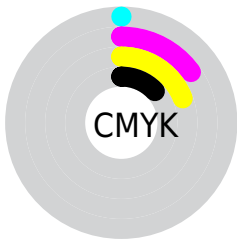
Blue (71%)



Red (87%)

Yellow (75%)

Blue (71%)

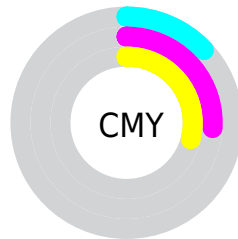


Cyan (0%)

Magenta (15%)

Yellow (19%)

Black (13%)



Cyan (13%)

Magenta (26%)

Yellow (29%)

Brightness & Saturation Gradients

These gradients show how the Android color 4292721844 changes by changing the brightness by 10 percent. The first figure shows a shift by +10% for each color and the second figure -10%.

Similar to the brightness gradients but the following saturation gradients show a change of the Android color 4292721844 by changing the saturation by 10% instead.

 4292721844

 4292721844

4294967295

 4290879897

 4294964460

 4289038207

 4287327590

 4285617486

 4283973175

 4282394658

 4280881932

 4279107584

 4278190080

 4292721844

 4292721844

 4292717214

 4292726474

 4292712584

 4292731104

 4292708210

 4292735478

 4292703580

 4292739071

 4292698950

 4292694319

 4292689689

 4292685315

 4292684544

Harmonies

Analogous

The Analogous color harmony consists of three colors that are next to each other on the color wheel.



4292787136



4292721844



4292263852

Triad

The Triadic color harmony groups three colors that are evenly spaced from another and form a triangle on the color wheel.



4292721844



4289645242



4290429916

Complementary

The Complementary color scheme is a pair of colors which are on the opposite of each other on the color wheel.



4292721844



4290041309

Split Complementary

Split-complementary colors differ from the complementary color scheme. The scheme consists of three colors, the original color and two neighbors of the complement color.



4289513434



4292721844



4289055686

Square

The Square scheme is like the rectangle color scheme, but the four colors are evenly spaced on the color wheel.



4292721844



4290496431



4288989906



4291477463

Rectangle

The Rectangle color scheme consists of four colors that form a rectangle on the color wheel.



4292721844



4291740330



4288989906



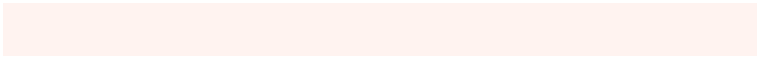
4290102492

Sweetspot

The Sweet Spot groups the original color and five complimentary colors.



4292721844



4294964208



4292719829



4286609527



4278190080



4286611584

Same Dimension

The Same Dimension uses a secret algorithm to generate beautiful new colors.



4292721844



4294955719



4292726964



4285424995



4289536512



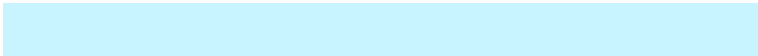
4281207040

Inverse Universe

The Inverse Universe completely reimagines the original color for something new.



4290041309



4291294463



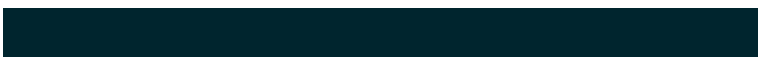
4290036189



4284705902



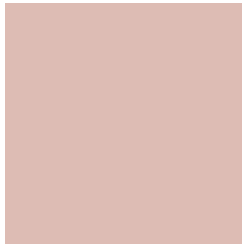
4278226093



4278199598

Previews

White Background



This preview shows how the Android color 4292721844 looks on a white background.

Color Contrast Check

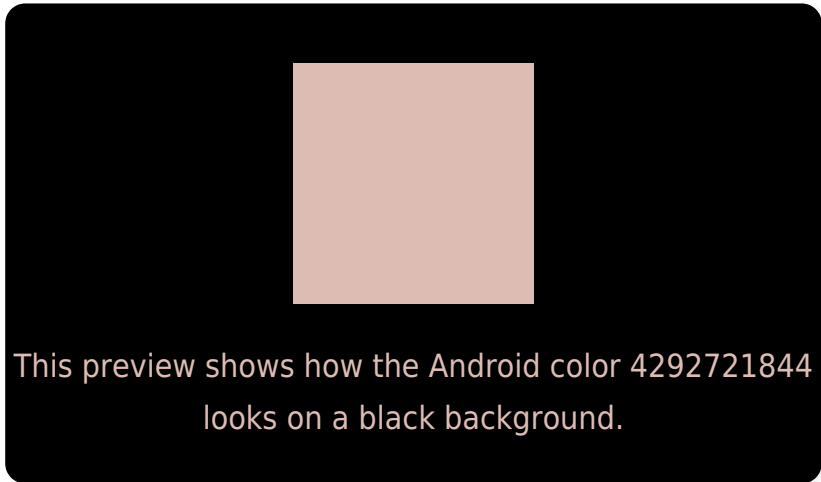
Large Text (above 18pt) WCAG AA × Fail

Any Text WCAG AA × Fail

Large Text (above 18pt) WCAG AAA × Fail

Any Text WCAG AAA × Fail

Black Background



Color Contrast Check

Large Text (above 18pt) WCAG AA ✓ Pass

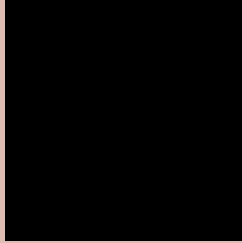
Any Text WCAG AA ✓ Pass

Large Text (above 18pt) WCAG AAA ✓ Pass

Any Text WCAG AAA ✓ Pass

If you want to check with other color combinations, try the [Color Contrast Checker](#).

Android 4292721844 Background



This preview shows how black text looks on a background with the Android color 4292721844.



This preview shows how white text looks on a background with the Android color 4292721844.

Color Blindness Simulation

Color vision deficiency is a very complex topic, and I could not describe the different causes any better than Wikipedia does, so if you want to learn more, you should check out their [article about color blindness](#).

Dichromacy



Original Color
4292721844

Protanopia
4291478456

Deuteranopia
4292656308



Tritanopia
4292852167

Trichromacy



Original Color
4292721844

Protanomaly
4291936439

Deuteranomaly
4292656308

Tritanomaly
4292786880

Monochromacy



Original Color
4292721844

Achromatopsia
4291151301

Achromatomaly
4291740351

CSS Examples

Text

The CSS property to change the color of the text to Android 4292721844 is called "color". The color property can be set on classes, ids or directly on the HTML element.

This example shows how text in the color `rgb(221, 188, 180)` looks like.

```
.text, #text, p{  
    color:rgb(221, 188, 180)  
}
```

If you want to add a text shadow in that color use the text-shadow property, you can generate a text shadow directly with our [CSS Text Shadow Generator](#).

Here you see how black text with a 4 pixel rgb(221, 188, 180) colored shadow looks like.

```
.shadow{ text-shadow: 4px 4px 2px rgb(221, 188, 180) }
```

Border

The CSS property to change the border of an element to Android 4292721844 is called "border". The border property can be set on classes, ids or directly on the HTML element.

This example shows the color as border, it can be applied via the CSS property "border" or "border-color".

```
.border, #border, table{ border:4px solid rgb(221, 188, 180) }
```

If only the border color should be changed use the property `border-color`.

```
.border{ border-color:rgb(221, 188, 180) }
```

If you want to add a box shadow in that color use:

Here you see how a box with a 4 pixel `rgb(221, 188, 180)` colored shadow looks like.

```
.boxshadow{ -moz-box-shadow:4px 4px 4px  
4px rgb(221, 188, 180); -webkit-box-  
shadow:4px 4px 4px 4px rgb(221, 188, 180);  
box-shadow:4px 4px 4px 4px rgb(221, 188,  
180) }
```

Background

The CSS property to change the background color of an element to Android 4292721844 is called "background". The background property can be set on classes, ids or directly on the HTML element.

```
.background, #background, body{  
background: rgb(221, 188, 180) }
```

If only the background color should be changed can be used:

```
.background{ background-color: rgb(221,  
188, 180) }
```

This example shows the color as background, it is applied via the CSS property "background".

To optimize and compress your CSS code, you can use our [online CSS compressor and optimizer](#) based on csstidy. If you want to create a linear or radial gradient as background or border, check our [CSS Gradient Generator](#).

Hey! You found this booklet interesting? Support Converting Colors with the new Membership Option!

The pro membership hides all ads, plus gives you double the colors in the color bucket, and more awesome pro features!

[Learn more, Memberships starting at \\$2.50/m!](#)

**Follow me
on Twitter!**

@ConvertingColor