

Converting Colors

Android(4292722113)

Have a look what the booklet for
Android(4292722113) contains.

Android(4292722113)	3
<i>Conversions</i>	4
<i>Details</i>	6
<i>Harmonies</i>	11
<i>Previews</i>	23
<i>Color Blindness Simulation</i>	26
<i>CSS Examples</i>	29

Color

Android(4292722113)

Conversions

Conversions Part 1

Format	Color
Hex	DDBDC1
RGB	221, 189, 193
RGB Percent	87%, 74%, 76%
CMY	0.1333, 0.2588, 0.2431
CMYK	0.00, 0.14, 0.13, 0.13
HSL	352°, 32%, 80%
HSV	352°, 14%, 87%
XYZ	57.6420, 55.6176, 58.1493
YIQ	199.0240, 17.7880, 8.0280

Conversions

Conversions Part 2

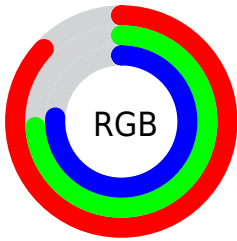
Format	Color
R_{YB}	221, 189, 193
Decimal	14532033
CIE _{Lab}	79.40, 12.04, 2.21
CIE _{LCh}	79, 12.237, 10.406
Yxy	55.6176, 0.3363, 0.3245
Android (android.graphics.Color)	4292722113 (0xFFDDBDC1)
YUV	199.0240, -2.9698, 19.2730
Hunter-Lab	74.5772, 7.4557, 5.9745

Details

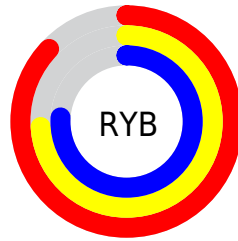
The Android color `4292722113` is a light color, and the websafe version is hex `FFCCCC`. A complement of this color would be `4290633177`, and the grayscale version is `4291282887`.

A 20% lighter version of the original color is `4294964729`, and `4289104012` is the 20% darker color. If you saturate the color by 10%, you get `4292716462`, and if you desaturate by 10%, it is `4292727764`.

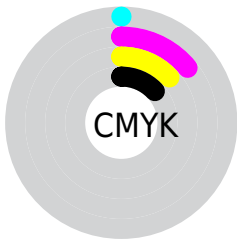
Distribution



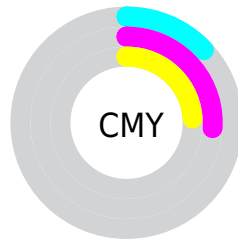
- Red (87%)
- Green (74%)
- Blue (76%)



- Red (87%)
- Yellow (74%)
- Blue (76%)



- Cyan (0%)
- Magenta (14%)
- Yellow (13%)
- Black (13%)



- Cyan (13%)
- Magenta (26%)
- Yellow (24%)

Brightness & Saturation Gradients

These gradients show how the Android color 4292722113 changes by changing the brightness by 10 percent. The first figure shows a shift by +10% for each color and the second figure -10%.

Similar to the brightness gradients but the following saturation gradients show a change of the Android color 4292722113 by changing the saturation by 10% instead.

 4292722113

 4292722113

4294967295

 4290880166

 4294964729

 4289104012

 4287327858

 4285617754

 4284038722

 4282460204

 4280947736

 4279566336

 4278190080

 4292722113

 4292722113

 4292716462

 4292727764

 4292710810

 4292733416

 4292705159

 4292739067

 4292699508

 4292739071

 4292693600

 4292687949

 4292682298

 4292676646

 4292673564

Harmonies

Analogous

The Analogous color harmony consists of three colors that are next to each other on the color wheel.



4292329165



4292722113



4292656822

Triad

The Triadic color harmony groups three colors that are evenly spaced from another and form a triangle on the color wheel.



4292722113



4290628019



4289841370

Complementary

The Complementary color scheme is a pair of colors which are on the opposite of each other on the color wheel.



4292722113



4290633177

Split Complementary

Split-complementary colors differ from the complementary color scheme. The scheme consists of three colors, the original color and two neighbors of the complement color.



4289317843



4292722113



4289842109

Square

The Square scheme is like the rectangle color scheme, but the four colors are evenly spaced on the color wheel.



4292722113



4291478958



4289318088



4290692315

Rectangle

The Rectangle color scheme consists of four colors that form a rectangle on the color wheel.



4292722113



4292395185



4289318088



4289579480

Sweetspot

The Sweet Spot groups the original color and five complimentary colors.



4292722113



4294964726



4292459997



4286609786



4278190080



4286611584

Same Dimension

The Same Dimension uses a secret algorithm to generate beautiful new colors.



4292722113



4294956249



4292725181



4285424484



4289527830



4281204742

Inverse Universe

The Inverse Universe completely reimagines the original color for something new.



4292722113



4294956249



4290630109



4285424484



4289527830



4281204742

Previews

White Background



This preview shows how the Android color 4292722113 looks on a white background.

Color Contrast Check

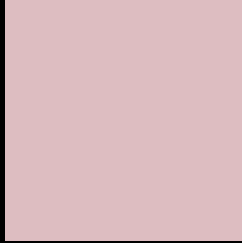
Large Text (above 18pt) WCAG AA × Fail

Any Text WCAG AA × Fail

Large Text (above 18pt) WCAG AAA × Fail

Any Text WCAG AAA × Fail

Black Background



This preview shows how the Android color 4292722113 looks on a black background.

Color Contrast Check

Large Text (above 18pt) WCAG AA ✓ Pass

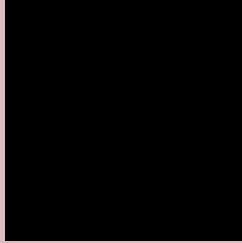
Any Text WCAG AA ✓ Pass

Large Text (above 18pt) WCAG AAA ✓ Pass

Any Text WCAG AAA ✓ Pass

If you want to check with other color combinations, try the [Color Contrast Checker](#).

Android 4292722113 Background



This preview shows how black text looks on a background with the Android color 4292722113.




This preview shows how white text looks on a background with the Android color 4292722113.

Color Blindness Simulation

Color vision deficiency is a very complex topic, and I could not describe the different causes any better than Wikipedia does, so if you want to learn more, you should check out their [article about color blindness](#).

Dichromacy

	Original Color 4292722113
	Protanopia 4291347653
	Deuteranopia 4292460225



Tritanopia
4292787402

Trichromacy



Original Color
4292722113

Protanomaly
4291871172

Deuteranomaly
4292525761

Tritanomaly
4292787399

Monochromacy



Original Color
4292722113

Achromatopsia
4291282887

Achromatomaly
4291806149

CSS Examples

Text

The CSS property to change the color of the text to Android 4292722113 is called "color". The color property can be set on classes, ids or directly on the HTML element.

This example shows how text in the color `rgb(221, 189, 193)` looks like.

```
.text, #text, p{  
    color:rgb(221, 189, 193)  
}
```

If you want to add a text shadow in that color use the text-shadow property, you can generate a text shadow directly with our [CSS Text Shadow Generator](#).

Here you see how black text with a 4 pixel rgb(221, 189, 193) colored shadow looks like.

```
.shadow{ text-shadow: 4px 4px 2px rgb(221, 189, 193) }
```

Border

The CSS property to change the border of an element to Android 4292722113 is called "border". The border property can be set on classes, ids or directly on the HTML element.

This example shows the color as border, it can be applied via the CSS property "border" or "border-color".

```
.border, #border, table{ border:4px solid rgb(221, 189, 193) }
```

If only the border color should be changed use the property `border-color`.

```
.border{ border-color:rgb(221, 189, 193) }
```

If you want to add a box shadow in that color use:

Here you see how a box with a 4 pixel `rgb(221, 189, 193)` colored shadow looks like.

```
.boxshadow{ -moz-box-shadow:4px 4px 4px  
4px rgb(221, 189, 193); -webkit-box-  
shadow:4px 4px 4px 4px rgb(221, 189, 193);  
box-shadow:4px 4px 4px 4px rgb(221, 189,  
193) }
```

Background

The CSS property to change the background color of an element to Android 4292722113 is called "background". The background property can be set on classes, ids or directly on the HTML element.

```
.background, #background, body{  
background: rgb(221, 189, 193) }
```

If only the background color should be changed can be used:

```
.background{ background-color: rgb(221,  
189, 193) }
```

This example shows the color as background, it is applied via the CSS property "background".

To optimize and compress your CSS code, you can use our [online CSS compressor and optimizer](#) based on csstidy. If you want to create a linear or radial gradient as background or border, check our [CSS Gradient Generator](#).

Hey! You found this booklet interesting? Support Converting Colors with the new Membership Option!

The pro membership hides all ads, plus gives you double the colors in the color bucket, and more awesome pro features!

[Learn more, Memberships starting at \\$2.50/m!](#)

**Follow me
on Twitter!**

@ConvertingColor