

Converting Colors

Android(4292723402)

Have a look what the booklet for
Android(4292723402) contains.

Android(4292723402)	3
<i>Conversions</i>	4
<i>Details</i>	6
<i>Harmonies</i>	11
<i>Previews</i>	23
<i>Color Blindness Simulation</i>	26
<i>CSS Examples</i>	29

Color

Android(4292723402)

Conversions

Conversions Part 1

Format	Color
Hex	DDC2CA
RGB	221, 194, 202
RGB Percent	87%, 76%, 79%
CMY	0.1333, 0.2392, 0.2078
CMYK	0.00, 0.12, 0.09, 0.13
HSL	342°, 28%, 81%
HSV	342°, 12%, 87%
XYZ	59.7713, 58.2200, 63.9644
YIQ	202.9850, 13.5240, 8.2120

Conversions

Conversions Part 2

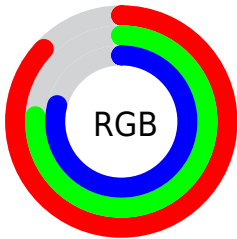
Format	Color
R _Y B	221, 194, 202
Decimal	14533322
CIE Lab	80.86, 10.87, -0.50
CIE LCh	81, 10.880, 357.358
Yxy	58.2200, 0.3285, 0.3200
Android (android.graphics.Color)	4292723402 (0xFFDDC2CA)
YUV	202.9850, -0.4856, 15.7992
Hunter-Lab	76.3020, 6.2996, 3.7083

Details

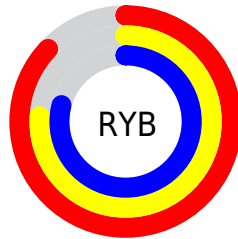
The Android color `4292723402` is a light color, and the websafe version is hex `CCCCCC`. A complement of this color would be `4290960853`, and the grayscale version is `4291546059`.

A 20% lighter version of the original color is `4294966271`, and `4289105044` is the 20% darker color. If you saturate the color by 10%, you get `4292717754`, and if you desaturate by 10%, it is `4292729050`.

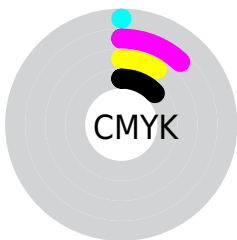
Distribution



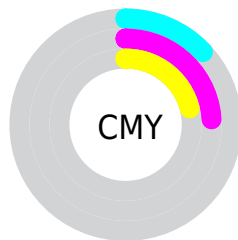
- Red (87%)
- Green (76%)
- Blue (79%)



- Red (87%)
- Yellow (76%)
- Blue (79%)



- Cyan (0%)
- Magenta (12%)
- Yellow (9%)
- Black (13%)



- Cyan (13%)
- Magenta (24%)
- Yellow (21%)

Brightness & Saturation Gradients

These gradients show how the Android color 4292723402 changes by changing the brightness by 10 percent. The first figure shows a shift by +10% for each color and the second figure -10%.

Similar to the brightness gradients but the following saturation gradients show a change of the Android color 4292723402 by changing the saturation by 10% instead.

 4292723402

 4292723402

4294967295

 4290881455

 4294966271

 4289105044

 4287329146

 4285684321

 4284040010

 4282461235

 4281014302

 4279762949

 4278190080

 4292723402

 4292723402

 4292717754

 4292729050

 4292712107

 4292734697

 4292706459

 4292739065

 4292700812

 4292739071

 4292695164

 4292689261

 4292683613

 4292677966

 4292673601

Harmonies

Analogous

The Analogous color harmony consists of three colors that are next to each other on the color wheel.



4292199636



4292723402



4292854464

Triad

The Triadic color harmony groups three colors that are evenly spaced from another and form a triangle on the color wheel.



4292723402



4291283895



4289973721

Complementary

The Complementary color scheme is a pair of colors which are on the opposite of each other on the color wheel.



4292723402



4290960853

Split Complementary

Split-complementary colors differ from the complementary color scheme. The scheme consists of three colors, the original color and two neighbors of the complement color.



4289712082



4292723402



4290498238

Square

The Square scheme is like the rectangle color scheme, but the four colors are evenly spaced on the color wheel.



4292723402



4292004021



4289974215



4290628317

Rectangle

The Rectangle color scheme consists of four colors that form a rectangle on the color wheel.



4292723402



4292723898



4289974215



4289842903

Sweetspot

The Sweet Spot groups the original color and five complimentary colors.



4292723402



4294964728



4292199133



4286609787



4278190080



4286611584

Same Dimension

The Same Dimension uses a secret algorithm to generate beautiful new colors.



4292723402



4294957540



4292724674



4285424486



4289527859



4281204750

Inverse Universe

The Inverse Universe completely reimagines the original color for something new.



4292723402



4294957540



4290959581



4285424486



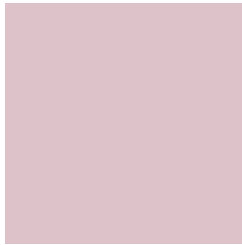
4289527859



4281204750

Previews

White Background



This preview shows how the Android color 4292723402 looks on a white background.

Color Contrast Check

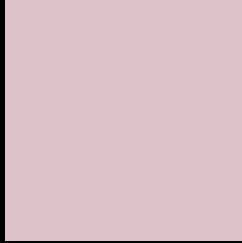
Large Text (above 18pt) WCAG AA × Fail

Any Text WCAG AA × Fail

Large Text (above 18pt) WCAG AAA × Fail

Any Text WCAG AAA × Fail

Black Background



This preview shows how the Android color 4292723402 looks on a black background.

Color Contrast Check

Large Text (above 18pt) WCAG AA ✓ Pass

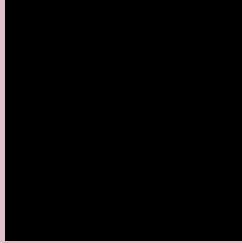
Any Text WCAG AA ✓ Pass

Large Text (above 18pt) WCAG AAA ✓ Pass

Any Text WCAG AAA ✓ Pass

If you want to check with other color combinations, try the [Color Contrast Checker](#).

Android 4292723402 Background



This preview shows how black text looks on a background with the Android color 4292723402.



This preview shows how white text looks on a background with the Android color 4292723402.

Color Blindness Simulation

Color vision deficiency is a very complex topic, and I could not describe the different causes any better than Wikipedia does, so if you want to learn more, you should check out their [article about color blindness](#).

Dichromacy



Original Color
[4292723402](#)

Protanopia
[4291545293](#)

Deuteranopia
[4292658122](#)



Tritanopia
4292788688

Trichromacy



Original Color
4292723402

Protanomaly
4292003532

Deuteranomaly
4292658122

Tritanomaly
4292788686

Monochromacy



Original Color
4292723402

Achromatopsia
4291546059

Achromatomaly
4292004043

CSS Examples

Text

The CSS property to change the color of the text to Android 4292723402 is called "color". The color property can be set on classes, ids or directly on the HTML element.

This example shows how text in the color `rgb(221, 194, 202)` looks like.

```
.text, #text, p{  
    color:rgb(221, 194, 202)  
}
```

If you want to add a text shadow in that color use the text-shadow property, you can generate a text shadow directly with our [CSS Text Shadow Generator](#).

Here you see how black text with a 4 pixel rgb(221, 194, 202) colored shadow looks like.

```
.shadow{ text-shadow: 4px 4px 2px rgb(221, 194, 202) }
```

Border

The CSS property to change the border of an element to Android 4292723402 is called "border". The border property can be set on classes, ids or directly on the HTML element.

This example shows the color as border, it can be applied via the CSS property "border" or "border-color".

```
.border, #border, table{ border:4px solid rgb(221, 194, 202) }
```

If only the border color should be changed use the property `border-color`.

```
.border{ border-color:rgb(221, 194, 202) }
```

If you want to add a box shadow in that color use:

Here you see how a box with a 4 pixel `rgb(221, 194, 202)` colored shadow looks like.

```
.boxshadow{ -moz-box-shadow:4px 4px 4px  
4px rgb(221, 194, 202); -webkit-box-  
shadow:4px 4px 4px 4px rgb(221, 194, 202);  
box-shadow:4px 4px 4px 4px rgb(221, 194,  
202) }
```

Background

The CSS property to change the background color of an element to Android 4292723402 is called "background". The background property can be set on classes, ids or directly on the HTML element.

```
.background, #background, body{  
background: rgb(221, 194, 202) }
```

If only the background color should be changed can be used:

```
.background{ background-color: rgb(221,  
194, 202) }
```

This example shows the color as background, it is applied via the CSS property "background".

To optimize and compress your CSS code, you can use our [online CSS compressor and optimizer](#) based on csstidy. If you want to create a linear or radial gradient as background or border, check our [CSS Gradient Generator](#).

Hey! You found this booklet interesting? Support Converting Colors with the new Membership Option!

The pro membership hides all ads, plus gives you double the colors in the color bucket, and more awesome pro features!

[Learn more, Memberships starting at \\$2.50/m!](#)

**Follow me
on Twitter!**

@ConvertingColor