

# Converting Colors

Android(4292723408)

Have a look what the booklet for  
Android(4292723408) contains.

<b>Android(4292723408)</b> .....	3
<b><i>Conversions</i></b> .....	4
<b><i>Details</i></b> .....	6
<b><i>Harmonies</i></b> .....	11
<b><i>Previews</i></b> .....	23
<b><i>Color Blindness Simulation</i></b> .....	26
<b><i>CSS Examples</i></b> .....	29

# **Color**

**Android(4292723408)**

# Conversions

## Conversions Part 1

Format	Color
Hex	DDC2D0
RGB	221, 194, 208
RGB Percent	87%, 76%, 82%
CMY	0.1333, 0.2392, 0.1843
CMYK	0.00, 0.12, 0.06, 0.13
HSL	329°, 28%, 81%
HSV	329°, 12%, 87%
XYZ	60.4957, 58.5098, 67.7796
YIQ	203.6690, 11.5980, 10.0780

# Conversions

## Conversions Part 2

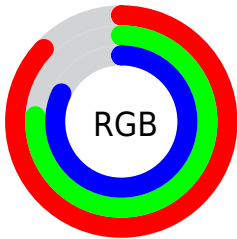
Format	Color
R <sub>Y</sub> B	221, 194, 208
Decimal	14533328
CIE Lab	81.02, 11.90, -3.49
CIE LCh	81, 12.402, 343.651
Yxy	58.5098, 0.3239, 0.3132
Android (android.graphics.Color)	4292723408 (0xFFDDC2D0)
YUV	203.6690, 2.1352, 15.1993
Hunter-Lab	76.4917, 7.3116, 1.0071

# Details

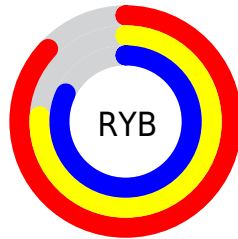
The Android color `4292723408` is a light color, and the websafe version is hex `CCCCCC`. A complement of this color would be `4290960847`, and the grayscale version is `4291611852`.

A 20% lighter version of the original color is `4294966271`, and `4289105050` is the 20% darker color. If you saturate the color by 10%, you get `4292717765`, and if you desaturate by 10%, it is `4292729051`.

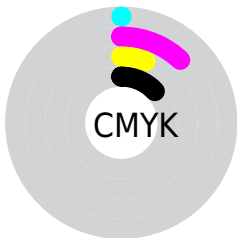
# Distribution



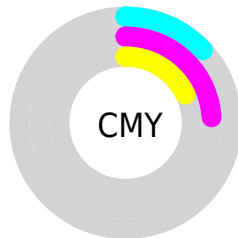
- Red (87%)
- Green (76%)
- Blue (82%)



- Red (87%)
- Yellow (76%)
- Blue (82%)



- Cyan (0%)
- Magenta (12%)
- Yellow (6%)
- Black (13%)



- Cyan (13%)
- Magenta (24%)
- Yellow (18%)

# Brightness & Saturation Gradients

These gradients show how the Android color 4292723408 changes by changing the brightness by 10 percent. The first figure shows a shift by +10% for each color and the second figure -10%.

Similar to the brightness gradients but the following saturation gradients show a change of the Android color 4292723408 by changing the saturation by 10% instead.



 4292723408

 4292723408

4294967295

 4290881460

 4294966271

 4289105050

 4287329152

 4285684327

 4284040015

 4282461240

 4281014050

 4279762957

 4278190080

 4292723408

 4292723408

 4292717765

 4292729051

 4292712123

 4292734693

 4292706480

 4292739056

 4292700837

 4292739067

 4292695195

 4292739071

 4292689296

 4292683654

 4292678011

 4292673651

# Harmonies

## Analogous

The Analogous color harmony consists of three colors that are next to each other on the color wheel.



4292003290



4292723408



4293050820

# Triad

The Triadic color harmony groups three colors that are evenly spaced from another and form a triangle on the color wheel.



4292723408



4291676851



4289581017

# Complementary

The Complementary color scheme is a pair of colors which are on the opposite of each other on the color wheel.



4292723408



4290960847

# Split Complementary

Split-complementary colors differ from the complementary color scheme. The scheme consists of three colors, the original color and two neighbors of the complement color.



4289581262



4292723408



4290825656

# Square

The Square scheme is like the rectangle color scheme, but the four colors are evenly spaced on the color wheel.



4292723408



4292462259



4290040002



4290170079

# Rectangle

The Rectangle color scheme consists of four colors that form a rectangle on the color wheel.



4292723408



4293051069



4290040002



4289515734



# Sweetspot

The Sweet Spot groups the original color and five complimentary colors.



4292723408



4294964730



4291805917



4286609788



4278190080



4286611584



# Same Dimension

The Same Dimension uses a secret algorithm to generate beautiful new colors.



4292723408



4294957549



4292723395



4285424488



4289527898



4281204760



# Inverse Universe

The Inverse Universe completely reimagines the original color for something new.



4292723408



4294957549



4290960860



4285424488



4289527898



4281204760



# Previews

## White Background



This preview shows how the Android color 4292723408 looks on a white background.

## Color Contrast Check

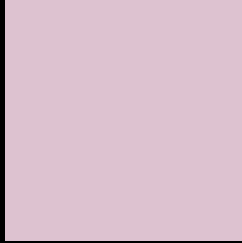
Large Text (above 18pt) WCAG AA × Fail

Any Text WCAG AA × Fail

Large Text (above 18pt) WCAG AAA × Fail

Any Text WCAG AAA × Fail

# Black Background



This preview shows how the Android color 4292723408 looks on a black background.

## Color Contrast Check

Large Text (above 18pt) WCAG AA ✓ Pass

Any Text WCAG AA ✓ Pass

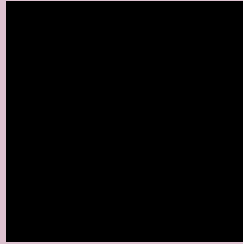
Large Text (above 18pt) WCAG AAA ✓ Pass

Any Text WCAG AAA ✓ Pass

If you want to check with other color combinations, try the [Color Contrast Checker](#).



# Android 4292723408 Background



This preview shows how black text looks on a background with the Android color 4292723408.



This preview shows how white text looks on a background with the Android color 4292723408.

# Color Blindness Simulation

Color vision deficiency is a very complex topic, and I could not describe the different causes any better than Wikipedia does, so if you want to learn more, you should check out their [article about color blindness](#).


## Dichromacy



**Original Color**  
4292723408

**Protanopia**  
4291479764

**Deuteranopia**  
4292527056



**Tritanopia**  
4292723409

# Trichromacy



**Original Color**  
4292723408

**Protanomaly**  
4291938003

**Deuteranomaly**  
4292592592

**Tritanomaly**  
4292723409

# Monochromacy



**Original Color**  
4292723408

**Achromatopsia**  
4291611852

**Achromatomaly**  
4292004045

# CSS Examples

## Text

The CSS property to change the color of the text to Android 4292723408 is called "color". The color property can be set on classes, ids or directly on the HTML element.

This example shows how text in the color `rgb(221, 194, 208)` looks like.

```
.text, #text, p{  
    color:rgb(221, 194, 208)  
}
```

If you want to add a text shadow in that color use the text-shadow property, you can generate a text shadow directly with our [CSS Text Shadow Generator](#).

Here you see how black text with a 4 pixel rgb(221, 194, 208) colored shadow looks like.

```
.shadow{ text-shadow: 4px 4px 2px rgb(221, 194, 208) }
```

## Border

The CSS property to change the border of an element to Android 4292723408 is called "border". The border property can be set on classes, ids or directly on the HTML element.

This example shows the color as border, it can be applied via the CSS property "border" or "border-color".

```
.border, #border, table{ border:4px solid rgb(221, 194, 208) }
```

If only the border color should be changed use the property `border-color`.

```
.border{ border-color:rgb(221, 194, 208) }
```

If you want to add a box shadow in that color use:

Here you see how a box with a 4 pixel `rgb(221, 194, 208)` colored shadow looks like.

```
.boxshadow{ -moz-box-shadow:4px 4px 4px  
4px rgb(221, 194, 208); -webkit-box-  
shadow:4px 4px 4px 4px rgb(221, 194, 208);  
box-shadow:4px 4px 4px 4px rgb(221, 194,  
208) }
```

# Background

The CSS property to change the background color of an element to Android 4292723408 is called "background". The background property can be set on classes, ids or directly on the HTML element.

```
.background, #background, body{  
background: rgb(221, 194, 208) }
```

If only the background color should be changed can be used:

```
.background{ background-color: rgb(221,  
194, 208) }
```

This example shows the color as background, it is applied via the CSS property "background".

To optimize and compress your CSS code, you can use our [online CSS compressor and optimizer](#) based on csstidy. If you want to create a linear or radial gradient as background or border, check our [CSS Gradient Generator](#).



Hey! You found this booklet interesting? Support Converting Colors with the new Membership Option!

The pro membership hides all ads, plus gives you double the colors in the color bucket, and more awesome pro features!

**[Learn more, Memberships starting at \\$2.50/m!](#)**

**Follow me  
on Twitter!**

@ConvertingColor