

# Converting Colors

Android(4292723627)

Have a look what the booklet for  
Android(4292723627) contains.

<b>Android(4292723627)</b> .....	3
<b><i>Conversions</i></b> .....	4
<b><i>Details</i></b> .....	6
<b><i>Harmonies</i></b> .....	11
<b><i>Previews</i></b> .....	23
<b><i>Color Blindness Simulation</i></b> .....	26
<b><i>CSS Examples</i></b> .....	29

# **Color**

**Android(4292723627)**

# Conversions

## Conversions Part 1

<b>Format</b>	<b>Color</b>
Hex	DDC3AB
RGB	221, 195, 171
RGB Percent	87%, 76%, 67%
CMY	0.1333, 0.2353, 0.3294
CMYK	0.00, 0.12, 0.23, 0.13
HSL	29°, 42%, 77%
HSV	29°, 23%, 87%
XYZ	56.6846, 57.3426, 46.6087
YIQ	200.0380, 23.2000, -1.9520

# Conversions

## Conversions Part 2

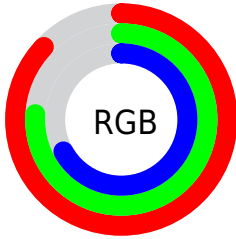
<b>Format</b>	<b>Color</b>
<b>R<sub>YB</sub></b>	221, 217, 171
Decimal	14533547
CIE <sub>Lab</sub>	80.37, 5.47, 15.43
CIE <sub>LCh</sub>	80, 16.370, 70.474
Yxy	57.3426, 0.3529, 0.3570
Android (android.graphics.Color)	4292723627 (0xFFDDC3AB)
YUV	200.0380, -14.3157, 18.3837
Hunter-Lab	75.7249, 1.0992, 16.5144

# Details

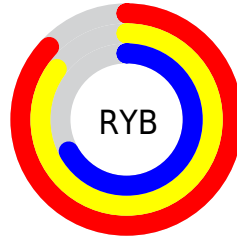
The Android color `4292723627` is a light color, and the websafe version is hex `FFCCCC`. A complement of this color would be `4289447389`, and the grayscale version is `4291348680`.

A 20% lighter version of the original color is `4294966498`, and `4289039735` is the 20% darker color. If you saturate the color by 10%, you get `4292720789`, and if you desaturate by 10%, it is `4292726465`.

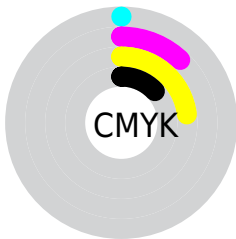
# Distribution



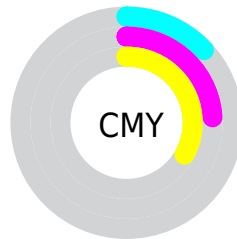
- Red (87%)
- Green (76%)
- Blue (67%)



- Red (87%)
- Yellow (85%)
- Blue (67%)



- Cyan (0%)
- Magenta (12%)
- Yellow (23%)
- Black (13%)



- Cyan (13%)
- Magenta (24%)
- Yellow (33%)

# Brightness & Saturation Gradients

These gradients show how the Android color 4292723627 changes by changing the brightness by 10 percent. The first figure shows a shift by +10% for each color and the second figure -10%.

Similar to the brightness gradients but the following saturation gradients show a change of the Android color 4292723627 by changing the saturation by 10% instead.



 4292723627

 4292723627

4294967295

 4290881680

 4294966498

 4289039735

 4287329374

 4285619014

 4283974704

 4282396187

 4280948992

 4279173120

 4278190080

 4292723627

 4292723627

 4292720789

 4292726465

 4292717695

 4292729559

 4292714857

 4292732397

 4292711763

 4292735487

 4292708924

 4292738303

 4292705830

 4292739071

 4292702992

 4292700672

# Harmonies

## Analogous

The Analogous color harmony consists of three colors that are next to each other on the color wheel.



4293312436



4292723627



4291741865

# Triad

The Triadic color harmony groups three colors that are evenly spaced from another and form a triangle on the color wheel.



4292723627



4288860364



4291936991

# Complementary

The Complementary color scheme is a pair of colors which are on the opposite of each other on the color wheel.



4292723627



4289447389

# Split Complementary

Split-complementary colors differ from the complementary color scheme. The scheme consists of three colors, the original color and two neighbors of the complement color.



4290693093



4292723627



4288794587

# Square

The Square scheme is like the rectangle color scheme, but the four colors are evenly spaced on the color wheel.



4292723627



4289515709



4289449188



4292918994

# Rectangle

The Rectangle color scheme consists of four colors that form a rectangle on the color wheel.



4292723627



4290956205



4289449188



4291544034



# Sweetspot

The Sweet Spot groups the original color and five complimentary colors.



4292723627



4294964973



4292717510



4286610037



4278190080



4286611584



# Same Dimension

The Same Dimension uses a secret algorithm to generate beautiful new colors.



4292723627



4294958010



4292729771



4285425763



4289549056



4281210368

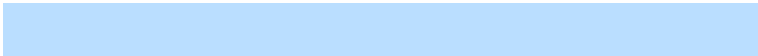


# Inverse Universe

The Inverse Universe completely reimagines the original color for something new.



4289447389



4290436863



4289441245



4284704878



4278213293

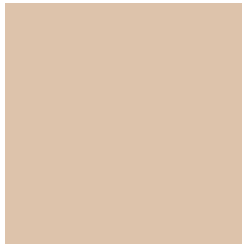


4278196270



# Previews

## White Background



This preview shows how the Android color 4292723627 looks on a white background.

## Color Contrast Check

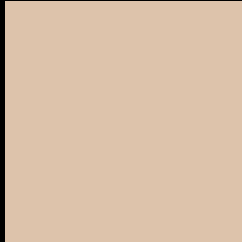
Large Text (above 18pt) WCAG AA × Fail

Any Text WCAG AA × Fail

Large Text (above 18pt) WCAG AAA × Fail

Any Text WCAG AAA × Fail

# Black Background



This preview shows how the Android color 4292723627 looks on a black background.

## Color Contrast Check

Large Text (above 18pt) WCAG AA ✓ Pass

Any Text WCAG AA ✓ Pass

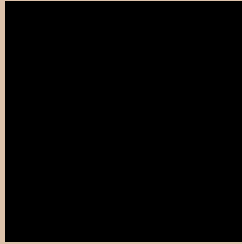
Large Text (above 18pt) WCAG AAA ✓ Pass

Any Text WCAG AAA ✓ Pass

If you want to check with other color combinations, try the [Color Contrast Checker](#).



# Android 4292723627 Background



This preview shows how black text looks on a background with the Android color 4292723627.



This preview shows how white text looks on a background with the Android color 4292723627.

# Color Blindness Simulation

Color vision deficiency is a very complex topic, and I could not describe the different causes any better than Wikipedia does, so if you want to learn more, you should check out their [article about color blindness](#).

## Dichromacy



**Original Color**  
4292723627

**Protanopia**  
4291938221

**Deuteranopia**  
4293247148



**Tritanopia**  
4292984525

# Trichromacy



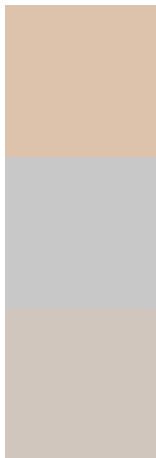
**Original Color**  
4292723627

**Protanomaly**  
4292200108

**Deuteranomaly**  
4293050796

**Tritanomaly**  
4292919489

# Monochromacy



**Original Color**  
4292723627

**Achromatopsia**  
4291348680

**Achromatomaly**  
4291872445

# CSS Examples

## Text

The CSS property to change the color of the text to Android 4292723627 is called "color". The color property can be set on classes, ids or directly on the HTML element.

This example shows how text in the color `rgb(221, 195, 171)` looks like.

```
.text, #text, p{  
    color:rgb(221, 195, 171)  
}
```

If you want to add a text shadow in that color use the text-shadow property, you can generate a text shadow directly with our [CSS Text Shadow Generator](#).

Here you see how black text with a 4 pixel rgb(221, 195, 171) colored shadow looks like.

```
.shadow{ text-shadow: 4px 4px 2px rgb(221, 195, 171) }
```

## Border

The CSS property to change the border of an element to Android 4292723627 is called "border". The border property can be set on classes, ids or directly on the HTML element.

This example shows the color as border, it can be applied via the CSS property "border" or "border-color".

```
.border, #border, table{ border:4px solid rgb(221, 195, 171) }
```

If only the border color should be changed use the property `border-color`.

```
.border{ border-color:rgb(221, 195, 171) }
```

If you want to add a box shadow in that color use:

Here you see how a box with a 4 pixel `rgb(221, 195, 171)` colored shadow looks like.

```
.boxshadow{ -moz-box-shadow:4px 4px 4px  
4px rgb(221, 195, 171); -webkit-box-  
shadow:4px 4px 4px 4px rgb(221, 195, 171);  
box-shadow:4px 4px 4px 4px rgb(221, 195,  
171) }
```

# Background

The CSS property to change the background color of an element to Android 4292723627 is called "background". The background property can be set on classes, ids or directly on the HTML element.

```
.background, #background, body{  
background: rgb(221, 195, 171) }
```

If only the background color should be changed can be used:

```
.background{ background-color: rgb(221,  
195, 171) }
```

This example shows the color as background, it is applied via the CSS property "background".

To optimize and compress your CSS code, you can use our [online CSS compressor and optimizer](#) based on csstidy. If you want to create a linear or radial gradient as background or border, check our [CSS Gradient Generator](#).



Hey! You found this booklet interesting? Support Converting Colors with the new Membership Option!

The pro membership hides all ads, plus gives you double the colors in the color bucket, and more awesome pro features!

**[Learn more, Memberships starting at \\$2.50/m!](#)**

**Follow me  
on Twitter!**

@ConvertingColor