

Converting Colors

Android(4292724161)

Have a look what the booklet for
Android(4292724161) contains.

Android(4292724161)	3
<i>Conversions</i>	4
<i>Details</i>	6
<i>Harmonies</i>	11
<i>Previews</i>	23
<i>Color Blindness Simulation</i>	26
<i>CSS Examples</i>	29

Color

Android(4292724161)

Conversions

Conversions Part 1

Format	Color
Hex	DDC5C1
RGB	221, 197, 193
RGB Percent	87%, 77%, 76%
CMY	0.1333, 0.2275, 0.2431
CMYK	0.00, 0.11, 0.13, 0.13
HSL	9°, 29%, 81%
HSV	9°, 13%, 87%
XYZ	59.4107, 59.1549, 58.7388
YIQ	203.7200, 15.5880, 3.8440

Conversions

Conversions Part 2

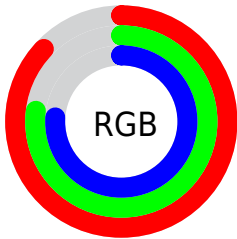
Format	Color
RYB	221, 198, 193
Decimal	14534081
CIELab	81.38, 7.78, 5.08
CIELCh	81, 9.293, 33.132
Yxy	59.1549, 0.3351, 0.3336
Android (android.graphics.Color)	4292724161 (0xFFDDC5C1)
YUV	203.7200, -5.2850, 15.1546
Hunter-Lab	76.9122, 3.2855, 8.5580

Details

The Android color `4292724161` is a light color, and the websafe version is hex `CCCCCC`. A complement of this color would be `4290894301`, and the grayscale version is `4291611852`.

A 20% lighter version of the original color is `4294967033`, and `4289105804` is the 20% darker color. If you saturate the color by 10%, you get `4292719275`, and if you desaturate by 10%, it is `4292729047`.

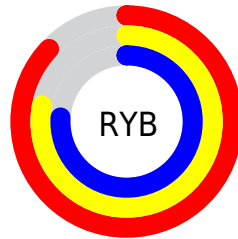
Distribution



Red (87%)

Green (77%)

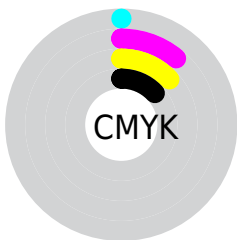
Blue (76%)



Red (87%)

Yellow (78%)

Blue (76%)

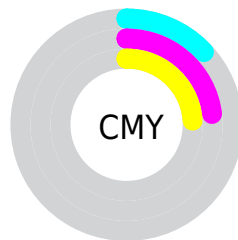


Cyan (0%)

Magenta (11%)

Yellow (13%)

Black (13%)



Cyan (13%)

Magenta (23%)

Yellow (24%)

Brightness & Saturation Gradients

These gradients show how the Android color 4292724161 changes by changing the brightness by 10 percent. The first figure shows a shift by +10% for each color and the second figure -10%.

Similar to the brightness gradients but the following saturation gradients show a change of the Android color 4292724161 by changing the saturation by 10% instead.

 4292724161

 4292724161

4294967295

 4290882214

 4294967033

 4289105804

 4287329906

 4285685082

 4284040514

 4282461996

 4281014808

 4279697408

 4278190080

 4292724161

 4292724161

 4292719275

 4292729047

 4292714389

 4292733933

 4292709503

 4292738815

 4292704617

 4292739071

 4292699731

 4292694844

 4292689958

 4292685072

 4292681728

Harmonies

Analogous

The Analogous color harmony consists of three colors that are next to each other on the color wheel.



4292658378



4292724161



4292462523

Triad

The Triadic color harmony groups three colors that are evenly spaced from another and form a triangle on the color wheel.



4292724161



4290629570



4290956251

Complementary

The Complementary color scheme is a pair of colors which are on the opposite of each other on the color wheel.



4292724161



4290894301

Split Complementary

Split-complementary colors differ from the complementary color scheme. The scheme consists of three colors, the original color and two neighbors of the complement color.



4290366937



4292724161



4290170827

Square

The Square scheme is like the rectangle color scheme, but the four colors are evenly spaced on the color wheel.



4292724161



4291284412



4290105299



4291676377

Rectangle

The Rectangle color scheme consists of four colors that form a rectangle on the color wheel.



4292724161



4292135353



4290105299



4290759899

Sweetspot

The Sweet Spot groups the original color and five complimentary colors.



4292724161



4294964981



4292723161



4286610041



4278190080



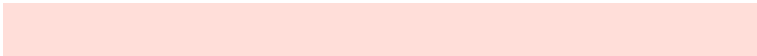
4286611584

Same Dimension

The Same Dimension uses a secret algorithm to generate beautiful new colors.



4292724161



4294958809



4292727745



4285424739



4289534208



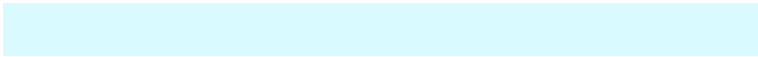
4281206528

Inverse Universe

The Inverse Universe completely reimagines the original color for something new.



4290894301



4292475647



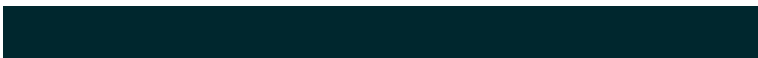
4290890717



4284705902



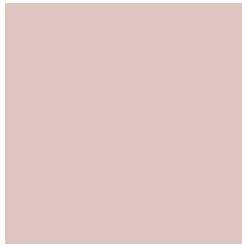
4278228397



4278200110

Previews

White Background



This preview shows how the Android color 4292724161 looks on a white background.

Color Contrast Check

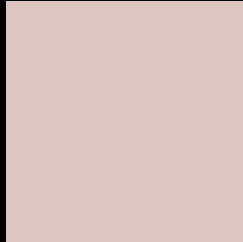
Large Text (above 18pt) WCAG AA × Fail

Any Text WCAG AA × Fail

Large Text (above 18pt) WCAG AAA × Fail

Any Text WCAG AAA × Fail

Black Background



This preview shows how the Android color 4292724161 looks on a black background.

Color Contrast Check

Large Text (above 18pt) WCAG AA ✓ Pass

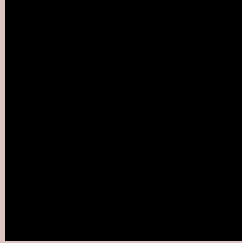
Any Text WCAG AA ✓ Pass

Large Text (above 18pt) WCAG AAA ✓ Pass

Any Text WCAG AAA ✓ Pass

If you want to check with other color combinations, try the [Color Contrast Checker](#).

Android 4292724161 Background



This preview shows how black text looks on a background with the Android color 4292724161.



This preview shows how white text looks on a background with the Android color 4292724161.

Color Blindness Simulation

Color vision deficiency is a very complex topic, and I could not describe the different causes any better than Wikipedia does, so if you want to learn more, you should check out their [article about color blindness](#).


Dichromacy



Original Color
4292724161

Protanopia
4291807683

Deuteranopia
4292985793



Tritanopia
4292854482

Trichromacy



Original Color
4292724161

Protanomaly
4292135106

Deuteranomaly
4292920513

Tritanomaly
4292789196

Monochromacy



Original Color
4292724161

Achromatopsia
4291611852

Achromatomaly
4292004296

CSS Examples

Text

The CSS property to change the color of the text to Android 4292724161 is called "color". The color property can be set on classes, ids or directly on the HTML element.

This example shows how text in the color `rgb(221, 197, 193)` looks like.

```
.text, #text, p{  
    color:rgb(221, 197, 193)  
}
```

If you want to add a text shadow in that color use the text-shadow property, you can generate a text shadow directly with our [CSS Text Shadow Generator](#).

Here you see how black text with a 4 pixel rgb(221, 197, 193) colored shadow looks like.

```
.shadow{ text-shadow: 4px 4px 2px rgb(221, 197, 193) }
```

Border

The CSS property to change the border of an element to Android 4292724161 is called "border". The border property can be set on classes, ids or directly on the HTML element.

This example shows the color as border, it can be applied via the CSS property "border" or "border-color".

```
.border, #border, table{ border:4px solid rgb(221, 197, 193) }
```

If only the border color should be changed use the property `border-color`.

```
.border{ border-color:rgb(221, 197, 193) }
```

If you want to add a box shadow in that color use:

Here you see how a box with a 4 pixel `rgb(221, 197, 193)` colored shadow looks like.

```
.boxshadow{ -moz-box-shadow:4px 4px 4px  
4px rgb(221, 197, 193); -webkit-box-  
shadow:4px 4px 4px 4px rgb(221, 197, 193);  
box-shadow:4px 4px 4px 4px rgb(221, 197,  
193) }
```

Background

The CSS property to change the background color of an element to Android 4292724161 is called "background". The background property can be set on classes, ids or directly on the HTML element.

```
.background, #background, body{  
background: rgb(221, 197, 193) }
```

If only the background color should be changed can be used:

```
.background{ background-color: rgb(221,  
197, 193) }
```

This example shows the color as background, it is applied via the CSS property "background".

To optimize and compress your CSS code, you can use our [online CSS compressor and optimizer](#) based on csstidy. If you want to create a linear or radial gradient as background or border, check our [CSS Gradient Generator](#).

Hey! You found this booklet interesting? Support Converting Colors with the new Membership Option!

The pro membership hides all ads, plus gives you double the colors in the color bucket, and more awesome pro features!

[Learn more, Memberships starting at \\$2.50/m!](#)

**Follow me
on Twitter!**

@ConvertingColor