

Converting Colors

Android(4292724172)

Have a look what the booklet for
Android(4292724172) contains.

Android(4292724172)	3
<i>Conversions</i>	4
<i>Details</i>	6
<i>Harmonies</i>	11
<i>Previews</i>	23
<i>Color Blindness Simulation</i>	26
<i>CSS Examples</i>	29

Color

Android(4292724172)

Conversions

Conversions Part 1

Format	Color
Hex	DDC5CC
RGB	221, 197, 204
RGB Percent	87%, 77%, 80%
CMY	0.1333, 0.2275, 0.2000
CMYK	0.00, 0.11, 0.08, 0.13
HSL	342°, 26%, 82%
HSV	342°, 11%, 87%
XYZ	60.6841, 59.6643, 65.4447
YIQ	204.9740, 12.0570, 7.2650

Conversions

Conversions Part 2

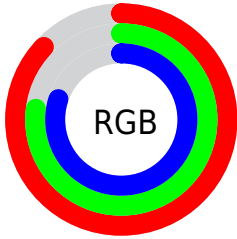
Format	Color
R _Y B	221, 197, 204
Decimal	14534092
CIE Lab	81.66, 9.61, -0.41
CIE LCh	82, 9.623, 357.534
Yxy	59.6643, 0.3266, 0.3211
Android (android.graphics.Color)	4292724172 (0xFFDDC5CC)
YUV	204.9740, -0.4802, 14.0548
Hunter-Lab	77.2427, 5.0602, 3.8358

Details

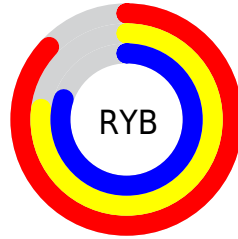
The Android color `4292724172` is a light color, and the websafe version is hex `CCCCCC`. A complement of this color would be `4291157462`, and the grayscale version is `4291677645`.

A 20% lighter version of the original color is `4294967039`, and `4289105814` is the 20% darker color. If you saturate the color by 10%, you get `4292718524`, and if you desaturate by 10%, it is `4292729820`.

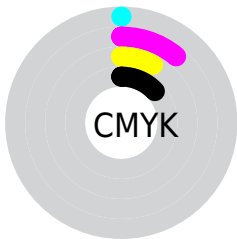
Distribution



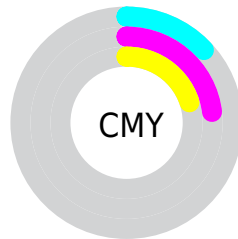
- Red (87%)
- Green (77%)
- Blue (80%)



- Red (87%)
- Yellow (77%)
- Blue (80%)



- Cyan (0%)
- Magenta (11%)
- Yellow (8%)
- Black (13%)



- Cyan (13%)
- Magenta (23%)
- Yellow (20%)

Brightness & Saturation Gradients

These gradients show how the Android color 4292724172 changes by changing the brightness by 10 percent. The first figure shows a shift by +10% for each color and the second figure -10%.

Similar to the brightness gradients but the following saturation gradients show a change of the Android color 4292724172 by changing the saturation by 10% instead.

 4292724172

 4292724172

4294967295

 4290882225

4294967039

 4289105814

 4287329916

 4285685091

 4284040523

 4282527541

 4281014816

 4279762951

 4278190080

 4292724172

 4292724172

 4292718524

 4292729820

 4292712877

 4292735467

 4292707229

 4292739067

 4292701581

 4292739071

 4292695934

 4292690030

 4292684382

 4292678735

 4292673600

Harmonies

Analogous

The Analogous color harmony consists of three colors that are next to each other on the color wheel.



4292265685



4292724172



4292855235

Triad

The Triadic color harmony groups three colors that are evenly spaced from another and form a triangle on the color wheel.



4292724172



4291415483



4290301914

Complementary

The Complementary color scheme is a pair of colors which are on the opposite of each other on the color wheel.



4292724172



4291157462

Split Complementary

Split-complementary colors differ from the complementary color scheme. The scheme consists of three colors, the original color and two neighbors of the complement color.



4290105555



4292724172



4290760641

Square

The Square scheme is like the rectangle color scheme, but the four colors are evenly spaced on the color wheel.



4292724172



4292070073



4290236618



4290890973

Rectangle

The Rectangle color scheme consists of four colors that form a rectangle on the color wheel.



4292724172



4292724414



4290236618



4290170840

Sweetspot

The Sweet Spot groups the original color and five complimentary colors.



4292724172



4294965242



4292265437



4286610044



4278190080



4286611584

Same Dimension

The Same Dimension uses a secret algorithm to generate beautiful new colors.



4292724172



4294958824



4292725445



4285424486



4289527859



4281204749

Inverse Universe

The Inverse Universe completely reimagines the original color for something new.



4292724172



4294958824



4291156189



4285424486



4289527859



4281204749

Previews

White Background



This preview shows how the Android color 4292724172 looks on a white background.

Color Contrast Check

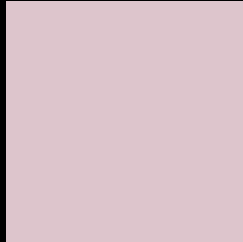
Large Text (above 18pt) WCAG AA × Fail

Any Text WCAG AA × Fail

Large Text (above 18pt) WCAG AAA × Fail

Any Text WCAG AAA × Fail

Black Background



This preview shows how the Android color 4292724172 looks on a black background.

Color Contrast Check

Large Text (above 18pt) WCAG AA ✓ Pass

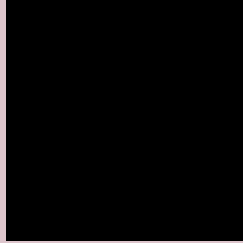
Any Text WCAG AA ✓ Pass

Large Text (above 18pt) WCAG AAA ✓ Pass

Any Text WCAG AAA ✓ Pass

If you want to check with other color combinations, try the [Color Contrast Checker](#).

Android 4292724172 Background



This preview shows how black text looks on a background with the Android color 4292724172.



This preview shows how white text looks on a background with the Android color 4292724172.

Color Blindness Simulation

Color vision deficiency is a very complex topic, and I could not describe the different causes any better than Wikipedia does, so if you want to learn more, you should check out their [article about color blindness](#).

Dichromacy



Original Color
4292724172

Protanopia
4291676879

Deuteranopia
4292789708



Tritanopia
4292789459

Trichromacy



Original Color

4292724172

Protanomaly

4292069582

Deuteranomaly

4292789708

Tritanomaly

4292789456

Monochromacy



Original Color

4292724172

Achromatopsia

4291677645

Achromatomaly

4292070093

CSS Examples

Text

The CSS property to change the color of the text to Android 4292724172 is called "color". The color property can be set on classes, ids or directly on the HTML element.

This example shows how text in the color `rgb(221, 197, 204)` looks like.

```
.text, #text, p{  
    color:rgb(221, 197, 204)  
}
```

If you want to add a text shadow in that color use the text-shadow property, you can generate a text shadow directly with our [CSS Text Shadow Generator](#).

Here you see how black text with a 4 pixel rgb(221, 197, 204) colored shadow looks like.

```
.shadow{ text-shadow: 4px 4px 2px rgb(221, 197, 204) }
```

Border

The CSS property to change the border of an element to Android 4292724172 is called "border". The border property can be set on classes, ids or directly on the HTML element.

This example shows the color as border, it can be applied via the CSS property "border" or "border-color".

```
.border, #border, table{ border:4px solid rgb(221, 197, 204) }
```

If only the border color should be changed use the property `border-color`.

```
.border{ border-color:rgb(221, 197, 204) }
```

If you want to add a box shadow in that color use:

Here you see how a box with a 4 pixel `rgb(221, 197, 204)` colored shadow looks like.

```
.boxshadow{ -moz-box-shadow:4px 4px 4px  
4px rgb(221, 197, 204); -webkit-box-  
shadow:4px 4px 4px 4px rgb(221, 197, 204);  
box-shadow:4px 4px 4px 4px rgb(221, 197,  
204) }
```

Background

The CSS property to change the background color of an element to Android 4292724172 is called "background". The background property can be set on classes, ids or directly on the HTML element.

```
.background, #background, body{  
background: rgb(221, 197, 204) }
```

If only the background color should be changed can be used:

```
.background{ background-color: rgb(221,  
197, 204) }
```

This example shows the color as background, it is applied via the CSS property "background".

To optimize and compress your CSS code, you can use our [online CSS compressor and optimizer](#) based on csstidy. If you want to create a linear or radial gradient as background or border, check our [CSS Gradient Generator](#).

Hey! You found this booklet interesting? Support Converting Colors with the new Membership Option!

The pro membership hides all ads, plus gives you double the colors in the color bucket, and more awesome pro features!

[Learn more, Memberships starting at \\$2.50/m!](#)

**Follow me
on Twitter!**

@ConvertingColor