

Converting Colors

Android(4292754559)

Have a look what the booklet for
Android(4292754559) contains.

Android(4292754559)	3
<i>Conversions</i>	4
<i>Details</i>	6
<i>Harmonies</i>	11
<i>Previews</i>	23
<i>Color Blindness Simulation</i>	26
<i>CSS Examples</i>	29

Color

Android(4292754559)

Conversions

Conversions Part 1

Format	Color
Hex	DE3C7F
RGB	222, 60, 127
RGB Percent	87%, 24%, 50%
CMY	0.1294, 0.7647, 0.5020
CMYK	0.00, 0.73, 0.43, 0.13
HSL	335°, 71%, 55%
HSV	335°, 73%, 87%
XYZ	35.5708, 20.2936, 22.1209
YIQ	116.0760, 75.0450, 55.1810

Conversions

Conversions Part 2

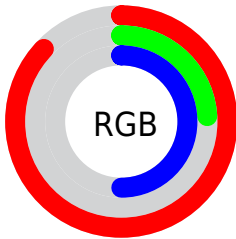
Format	Color
R _Y B	222, 60, 127
Decimal	14564479
CIE Lab	52.17, 66.49, -0.04
CIE LCh	52, 66.494, 359.962
Yxy	20.2936, 0.4561, 0.2602
Android (android.graphics.Color)	4292754559 (0xFFDE3C7F)
YUV	116.0760, 5.3855, 92.8953
Hunter-Lab	45.0484, 62.1111, 2.4197

Details

The Android color **4292754559** is a dark color, and the websafe version is hex **CC3366**. The color can be described as dark muted rose. A complement of this color would be **4282179227**, and the grayscale version is **4285822068**.

A 20% lighter version of the original color is **4294932660**, and **4288741454** is the 20% darker color. If you saturate the color by 10%, you get **4292748914**, and if you desaturate by 10%, it is **4292760204**.

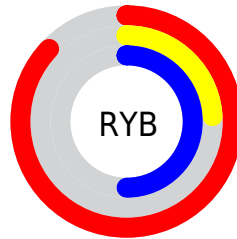
Distribution



Red (87%)

Green (24%)

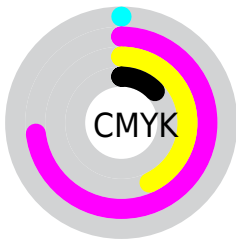
Blue (50%)



Red (87%)

Yellow (24%)

Blue (50%)

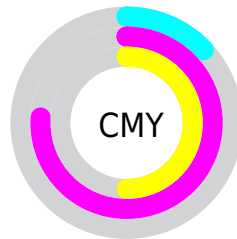


Cyan (0%)

Magenta (73%)

Yellow (43%)

Black (13%)



Cyan (13%)

Magenta (76%)

Yellow (50%)

Brightness & Saturation Gradients

These gradients show how the Android color 4292754559 changes by changing the brightness by 10 percent. The first figure shows a shift by +10% for each color and the second figure -10%.

Similar to the brightness gradients but the following saturation gradients show a change of the Android color 4292754559 by changing the saturation by 10% instead.

 4292754559

 4292754559

4294967295

 4290778214

 4294932660

 4288741454

 4294940111

 4286840888

 4294947563

 4284874787

 4294955007

 4283105292

 4294962687

 4281139201

 4278190080

 4292754559

 4292754559

 4292748914

 4292760204

 4292743269

 4292765849

 4292739164

 4292771750

 4292777395

 4292783040

 4292788685

 4292794330

 4292800231

 4292804596

Harmonies

Analogous

The Analogous color harmony consists of three colors that are next to each other on the color wheel.



4290793654



4292754559



4292626503

Triad

The Triadic color harmony groups three colors that are evenly spaced from another and form a triangle on the color wheel.



4292754559



4284320000



4278227167

Complementary

The Complementary color scheme is a pair of colors which are on the opposite of each other on the color wheel.



4292754559



4282179227

Split Complementary

Split-complementary colors differ from the complementary color scheme. The scheme consists of three colors, the original color and two neighbors of the complement color.



4278228660



4292754559



4278227519

Square

The Square scheme is like the rectangle color scheme, but the four colors are evenly spaced on the color wheel.



4292754559



4288051712



4278228603



4278224111

Rectangle

The Rectangle color scheme consists of four colors that form a rectangle on the color wheel.



4292754559



4291648036



4278228603



4278227923

Sweetspot

The Sweet Spot groups the original color and five complimentary colors.



4292754559



4294952926



4288298206



4286602860



4278190080



4286611584

Same Dimension

The Same Dimension uses a secret algorithm to generate beautiful new colors.



4292754559



4294909819



4292758076



4285556074



4289724489



4281335828

Inverse Universe

The Inverse Universe completely reimagines the original color for something new.



4292754559



4294909819



4282175966



4285556074



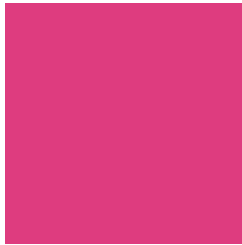
4289724489



4281335828

Previews

White Background



This preview shows how the Android color 4292754559 looks on a white background.

Color Contrast Check

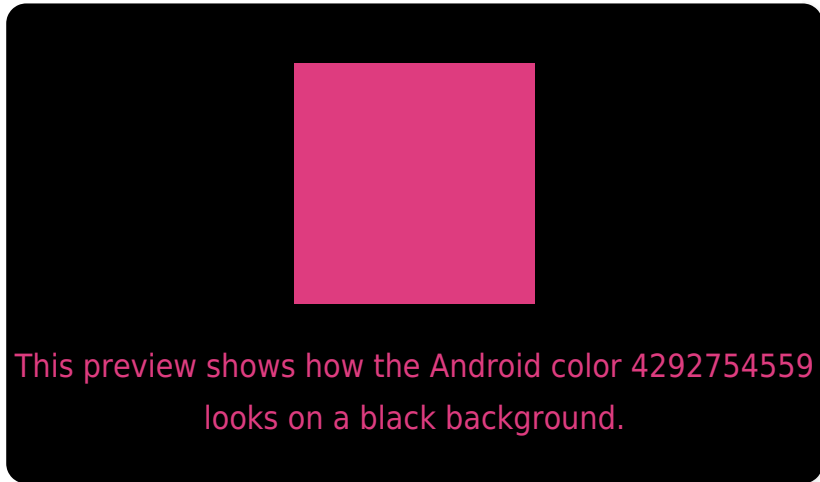
Large Text (above 18pt) WCAG AA ✓ Pass

Any Text WCAG AA ✗ Fail

Large Text (above 18pt) WCAG AAA ✗ Fail

Any Text WCAG AAA ✗ Fail

Black Background



Color Contrast Check

Large Text (above 18pt) WCAG AA ✓ Pass

Any Text WCAG AA ✓ Pass

Large Text (above 18pt) WCAG AAA ✓ Pass

Any Text WCAG AAA × Fail

If you want to check with other color combinations, try the [Color Contrast Checker](#).

Android 4292754559 Background



This preview shows how black text looks on a background with the Android color 4292754559.



This preview shows how white text looks on a background with the Android color 4292754559.

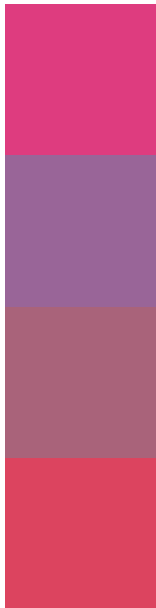
Color Blindness Simulation

Color vision deficiency is a very complex topic, and I could not describe the different causes any better than Wikipedia does, so if you want to learn more, you should check out their [article about color blindness](#).

Dichromacy



Trichromacy



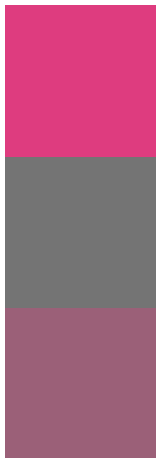
Original Color
4292754559

Protanomaly
4288243096

Deuteranomaly
4289291130

Tritanomaly
4292625503

Monochromacy



Original Color
4292754559

Achromatopsia
4285822068

Achromatomaly
4288372856

CSS Examples

Text

The CSS property to change the color of the text to Android 4292754559 is called "color". The color property can be set on classes, ids or directly on the HTML element.

This example shows how text in the color `rgb(222, 60, 127)` looks like.

```
.text, #text, p{  
    color:rgb(222, 60, 127)  
}
```

If you want to add a text shadow in that color use the text-shadow property, you can generate a text shadow directly with our [CSS Text Shadow Generator](#).

Here you see how black text with a 4 pixel rgb(222, 60, 127) colored shadow looks like.

```
.shadow{ text-shadow: 4px 4px 2px rgb(222, 60, 127) }
```

Border

The CSS property to change the border of an element to Android 4292754559 is called "border". The border property can be set on classes, ids or directly on the HTML element.

This example shows the color as border, it can be applied via the CSS property "border" or "border-color".

```
.border, #border, table{ border:4px solid rgb(222, 60, 127) }
```

If only the border color should be changed use the property `border-color`.

```
.border{ border-color:rgb(222, 60, 127) }
```

If you want to add a box shadow in that color use:

Here you see how a box with a 4 pixel `rgb(222, 60, 127)` colored shadow looks like.

```
.boxshadow{ -moz-box-shadow:4px 4px 4px  
4px rgb(222, 60, 127); -webkit-box-  
shadow:4px 4px 4px 4px rgb(222, 60, 127);  
box-shadow:4px 4px 4px 4px rgb(222, 60,  
127) }
```

Background

The CSS property to change the background color of an element to Android 4292754559 is called "background". The background property can be set on classes, ids or directly on the HTML element.

```
.background, #background, body{  
background: rgb(222, 60, 127) }
```

If only the background color should be changed can be used:

```
.background{ background-color: rgb(222, 60,  
127) }
```

This example shows the color as background, it is applied via the CSS property "background".

To optimize and compress your CSS code, you can use our [online CSS compressor and optimizer](#) based on csstidy. If you want to create a linear or radial gradient as background or border, check our [CSS Gradient Generator](#).

Hey! You found this booklet interesting? Support Converting Colors with the new Membership Option!

The pro membership hides all ads, plus gives you double the colors in the color bucket, and more awesome pro features!

[Learn more, Memberships starting at \\$2.50/m!](#)

**Follow me
on Twitter!**

@ConvertingColor