

Converting Colors

Android(4292755327)

Have a look what the booklet for
Android(4292755327) contains.

Android(4292755327)	3
<i>Conversions</i>	4
<i>Details</i>	6
<i>Harmonies</i>	11
<i>Previews</i>	23
<i>Color Blindness Simulation</i>	26
<i>CSS Examples</i>	29

Color

Android(4292755327)

Conversions

Conversions Part 1

Format	Color
Hex	DE3F7F
RGB	222, 63, 127
RGB Percent	87%, 25%, 50%
CMY	0.1294, 0.7529, 0.5020
CMYK	0.00, 0.72, 0.43, 0.13
HSL	336°, 71%, 56%
HSV	336°, 72%, 87%
XYZ	35.7325, 20.6169, 22.1748
YIQ	117.8370, 74.2200, 53.6120

Conversions

Conversions Part 2

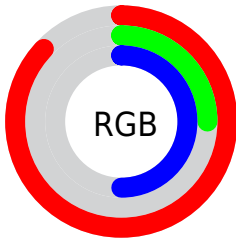
Format	Color
RYB	222, 63, 127
Decimal	14565247
CIELab	52.53, 65.49, 0.48
CIELCh	53, 65.489, 0.422
Yxy	20.6169, 0.4551, 0.2626
Android (android.graphics.Color)	4292755327 (0xFFDE3F7F)
YUV	117.8370, 4.5174, 91.3510
Hunter-Lab	45.4059, 61.0117, 2.8287

Details

The Android color `4292755327` is a dark color, and the websafe version is hex `CC3366`. The color can be described as dark muted rose. A complement of this color would be `4282375838`, and the grayscale version is `4285953654`.

A 20% lighter version of the original color is `4294933172`, and `4288806990` is the 20% darker color. If you saturate the color by 10%, you get `4292749682`, and if you desaturate by 10%, it is `4292760972`.

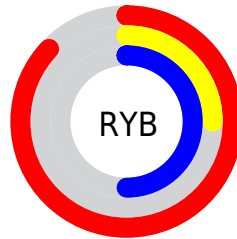
Distribution



Red (87%)

Green (25%)

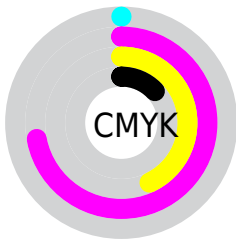
Blue (50%)



Red (87%)

Yellow (25%)

Blue (50%)

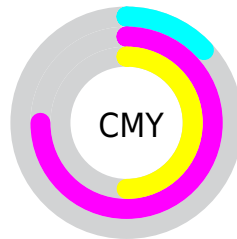


Cyan (0%)

Magenta (72%)

Yellow (43%)

Black (13%)



Cyan (13%)

Magenta (75%)

Yellow (50%)

Brightness & Saturation Gradients

These gradients show how the Android color 4292755327 changes by changing the brightness by 10 percent. The first figure shows a shift by +10% for each color and the second figure -10%.

Similar to the brightness gradients but the following saturation gradients show a change of the Android color 4292755327 by changing the saturation by 10% instead.



4292755327



4292755327

4294967295



4290779750



4294933172



4288806990



4294940623



4286840888



4294948075



4284874787



4294955519



4283105292



4294963199



4281139201



4278190080



4292755327



4292755327



4292749682



4292760972

 4292744036

 4292766618

 4292739161

 4292772519

 4292778164

 4292783809

 4292789455

 4292795100

 4292801001

 4292804598

Harmonies

Analogous

The Analogous color harmony consists of three colors that are next to each other on the color wheel.



4290794166



4292755327



4292627016

Triad

The Triadic color harmony groups three colors that are evenly spaced from another and form a triangle on the color wheel.



4292755327



4284385792



4278227423

Complementary

The Complementary color scheme is a pair of colors which are on the opposite of each other on the color wheel.



4292755327



4282375838

Split Complementary

Split-complementary colors differ from the complementary color scheme. The scheme consists of three colors, the original color and two neighbors of the complement color.



4278228661



4292755327



4278227778

Square

The Square scheme is like the rectangle color scheme, but the four colors are evenly spaced on the color wheel.



4292755327



4288051968



4278228604



4278224111

Rectangle

The Rectangle color scheme consists of four colors that form a rectangle on the color wheel.



4292755327



4291583013



4278228604



4278227923

Sweetspot

The Sweet Spot groups the original color and five complimentary colors.



4292755327



4294953439



4288430046



4286603372



4278190080



4286611584

Same Dimension

The Same Dimension uses a secret algorithm to generate beautiful new colors.



4292755327



4294911100



4292758591



4285556073



4289724487



4281335828

Inverse Universe

The Inverse Universe completely reimagines the original color for something new.



4292755327



4294911100



4282372574



4285556073



4289724487



4281335828

Previews

White Background



This preview shows how the Android color 4292755327 looks on a white background.

Color Contrast Check

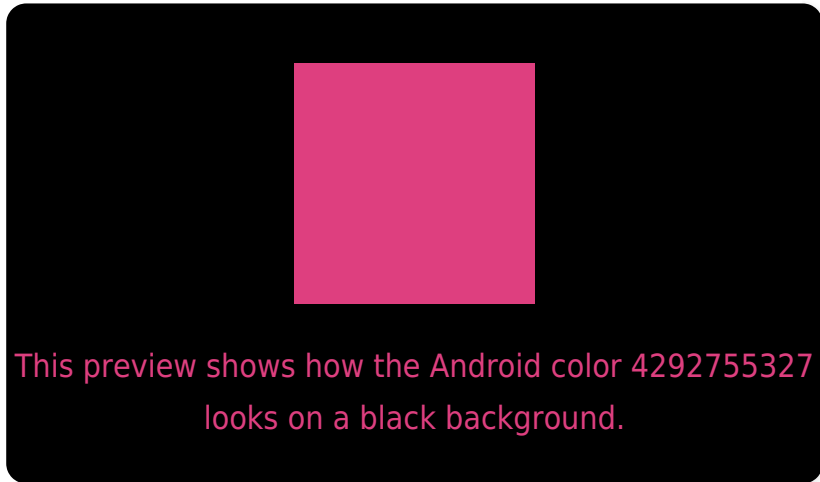
Large Text (above 18pt) WCAG AA ✓ Pass

Any Text WCAG AA ✗ Fail

Large Text (above 18pt) WCAG AAA ✗ Fail

Any Text WCAG AAA ✗ Fail

Black Background



Color Contrast Check

Large Text (above 18pt) WCAG AA ✓ Pass

Any Text WCAG AA ✓ Pass

Large Text (above 18pt) WCAG AAA ✓ Pass

Any Text WCAG AAA × Fail

If you want to check with other color combinations, try the [Color Contrast Checker](#).

Android 4292755327 Background



This preview shows how black text looks on a background with the Android color 4292755327.



This preview shows how white text looks on a background with the Android color 4292755327.

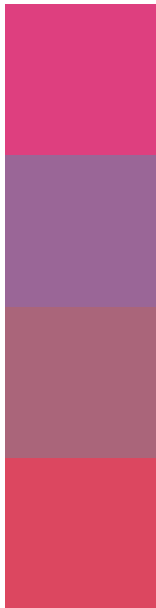
Color Blindness Simulation

Color vision deficiency is a very complex topic, and I could not describe the different causes any better than Wikipedia does, so if you want to learn more, you should check out their [article about color blindness](#).

Dichromacy



Trichromacy



Original Color

4292755327

Protanomaly

4288308887

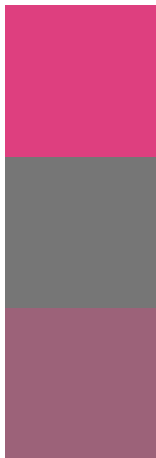
Deuteranomaly

4289357178

Tritanomaly

4292626272

Monochromacy



Original Color

4292755327

Achromatopsia

4285953654

Achromatomaly

4288438905

CSS Examples

Text

The CSS property to change the color of the text to Android 4292755327 is called "color". The color property can be set on classes, ids or directly on the HTML element.

This example shows how text in the color `rgb(222, 63, 127)` looks like.

```
.text, #text, p{  
    color:rgb(222, 63, 127)  
}
```

If you want to add a text shadow in that color use the text-shadow property, you can generate a text shadow directly with our [CSS Text Shadow Generator](#).

Here you see how black text with a 4 pixel rgb(222, 63, 127) colored shadow looks like.

```
.shadow{ text-shadow: 4px 4px 2px rgb(222, 63, 127) }
```

Border

The CSS property to change the border of an element to Android 4292755327 is called "border". The border property can be set on classes, ids or directly on the HTML element.

This example shows the color as border, it can be applied via the CSS property "border" or "border-color".

```
.border, #border, table{ border:4px solid rgb(222, 63, 127) }
```

If only the border color should be changed use the property `border-color`.

```
.border{ border-color:rgb(222, 63, 127) }
```

If you want to add a box shadow in that color use:

Here you see how a box with a 4 pixel `rgb(222, 63, 127)` colored shadow looks like.

```
.boxshadow{ -moz-box-shadow:4px 4px 4px  
4px rgb(222, 63, 127); -webkit-box-  
shadow:4px 4px 4px 4px rgb(222, 63, 127);  
box-shadow:4px 4px 4px 4px rgb(222, 63,  
127) }
```

Background

The CSS property to change the background color of an element to Android 4292755327 is called "background". The background property can be set on classes, ids or directly on the HTML element.

```
.background, #background, body{  
background: rgb(222, 63, 127) }
```

If only the background color should be changed can be used:

```
.background{ background-color: rgb(222, 63,  
127) }
```

This example shows the color as background, it is applied via the CSS property "background".

To optimize and compress your CSS code, you can use our [online CSS compressor and optimizer](#) based on csstidy. If you want to create a linear or radial gradient as background or border, check our [CSS Gradient Generator](#).

Hey! You found this booklet interesting? Support Converting Colors with the new Membership Option!

The pro membership hides all ads, plus gives you double the colors in the color bucket, and more awesome pro features!

[Learn more, Memberships starting at \\$2.50/m!](#)

**Follow me
on Twitter!**

@ConvertingColor