

Converting Colors

Android(4292755842)

Have a look what the booklet for
Android(4292755842) contains.

Android(4292755842)	3
<i>Conversions</i>	4
<i>Details</i>	6
<i>Harmonies</i>	11
<i>Previews</i>	23
<i>Color Blindness Simulation</i>	26
<i>CSS Examples</i>	29

Color

Android(4292755842)

Conversions

Conversions Part 1

Format	Color
Hex	DE4182
RGB	222, 65, 130
RGB Percent	87%, 25%, 51%
CMY	0.1294, 0.7451, 0.4902
CMYK	0.00, 0.71, 0.41, 0.13
HSL	335°, 70%, 56%
HSV	335°, 71%, 87%
XYZ	36.0438, 20.9219, 23.2577
YIQ	119.3530, 72.7070, 53.4990

Conversions

Conversions Part 2

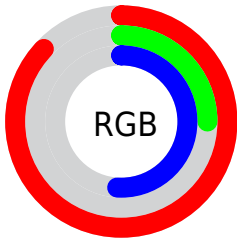
Format	Color
R_{YB}	222, 65, 130
Decimal	14565762
CIE Lab	52.86, 65.08, -0.82
CIE LCh	53, 65.088, 359.275
Yxy	20.9219, 0.4493, 0.2608
Android (android.graphics.Color)	4292755842 (0xFFDE4182)
YUV	119.3530, 5.2490, 90.0214
Hunter-Lab	45.7405, 60.6133, 1.8711

Details

The Android color **4292755842** is a dark color, and the websafe version is hex **CC3366**. The color can be described as middle muted rose. A complement of this color would be **4282506909**, and the grayscale version is **4286019447**.

A 20% lighter version of the original color is **4294933687**, and **4288806993** is the 20% darker color. If you saturate the color by 10%, you get **4292750197**, and if you desaturate by 10%, it is **4292761487**.

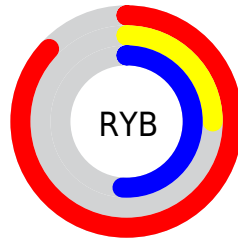
Distribution



Red (87%)

Green (25%)

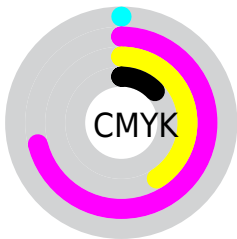
Blue (51%)



Red (87%)

Yellow (25%)

Blue (51%)

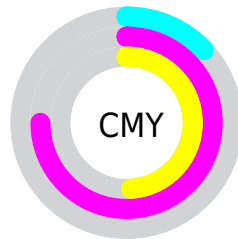


Cyan (0%)

Magenta (71%)

Yellow (41%)

Black (13%)



Cyan (13%)

Magenta (75%)

Yellow (49%)

Brightness & Saturation Gradients

These gradients show how the Android color 4292755842 changes by changing the brightness by 10 percent. The first figure shows a shift by +10% for each color and the second figure -10%.

Similar to the brightness gradients but the following saturation gradients show a change of the Android color 4292755842 by changing the saturation by 10% instead.



4292755842



4292755842

4294967295



4290780521



4294933687



4288806993



4294941138



4286840890



4294948335



4284940325



4294956031



4283105295



4294963455



4281204738



4278190080



4292755842



4292755842



4292750197



4292761487

 4292744552

 4292767132

 4292739164

 4292773033

 4292778678

 4292784323

 4292789968

 4292795613

 4292801514

 4292804599

Harmonies

Analogous

The Analogous color harmony consists of three colors that are next to each other on the color wheel.



4290729144



4292755842



4292692811

Triad

The Triadic color harmony groups three colors that are evenly spaced from another and form a triangle on the color wheel.



4292755842



4284582656



4278227678

Complementary

The Complementary color scheme is a pair of colors which are on the opposite of each other on the color wheel.



4292755842



4282506909

Split Complementary

Split-complementary colors differ from the complementary color scheme. The scheme consists of three colors, the original color and two neighbors of the complement color.



4278228916



4292755842



4278227777

Square

The Square scheme is like the rectangle color scheme, but the four colors are evenly spaced on the color wheel.



4292755842



4288248576



4278228859



4278224367

Rectangle

The Rectangle color scheme consists of four colors that form a rectangle on the color wheel.



4292755842



4291714089



4278228859



4278228178

Sweetspot

The Sweet Spot groups the original color and five complimentary colors.



4292755842



4294953440



4288496094



4286603373



4278190080



4286611584

Same Dimension

The Same Dimension uses a secret algorithm to generate beautiful new colors.



4292755842



4294911616



4292759105



4285556074



4289724489



4281335828

Inverse Universe

The Inverse Universe completely reimagines the original color for something new.



4292755842



4294911616



4282503646



4285556074



4289724489



4281335828

Previews

White Background



This preview shows how the Android color 4292755842 looks on a white background.

Color Contrast Check

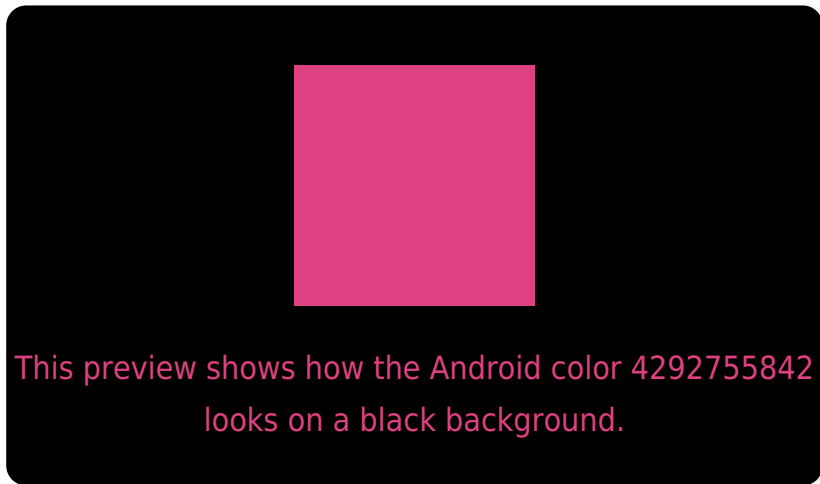
Large Text (above 18pt) WCAG AA ✓ Pass

Any Text WCAG AA ✗ Fail

Large Text (above 18pt) WCAG AAA ✗ Fail

Any Text WCAG AAA ✗ Fail

Black Background



Color Contrast Check

Large Text (above 18pt) WCAG AA ✓ Pass

Any Text WCAG AA ✓ Pass

Large Text (above 18pt) WCAG AAA ✓ Pass

Any Text WCAG AAA × Fail

If you want to check with other color combinations, try the [Color Contrast Checker](#).

Android 4292755842 Background



This preview shows how black text looks on a background with the Android color 4292755842.



This preview shows how white text looks on a background with the Android color 4292755842.

Color Blindness Simulation

Color vision deficiency is a very complex topic, and I could not describe the different causes any better than Wikipedia does, so if you want to learn more, you should check out their [article about color blindness](#).

Dichromacy

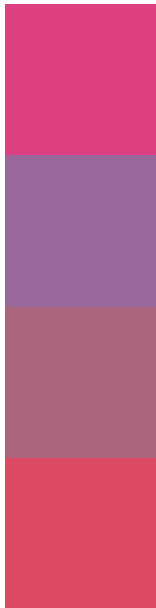


Original Color
4292755842

Protanopia
4285758887

Deuteranopia
4287462010

Trichromacy



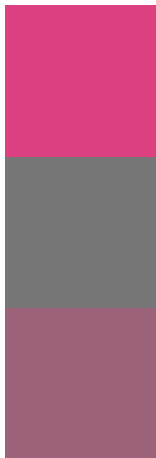
Original Color
4292755842

Protanomaly
4288309146

Deuteranomaly
4289357181

Tritanomaly
4292626787

Monochromacy



Original Color
4292755842

Achromatopsia
4286019447

Achromatomaly
4288439163

CSS Examples

Text

The CSS property to change the color of the text to Android 4292755842 is called "color". The color property can be set on classes, ids or directly on the HTML element.

This example shows how text in the color `rgb(222, 65, 130)` looks like.

```
.text, #text, p{  
    color:rgb(222, 65, 130)  
}
```

If you want to add a text shadow in that color use the text-shadow property, you can generate a text shadow directly with our [CSS Text Shadow Generator](#).

Here you see how black text with a 4 pixel rgb(222, 65, 130) colored shadow looks like.

```
.shadow{ text-shadow: 4px 4px 2px rgb(222, 65, 130) }
```

Border

The CSS property to change the border of an element to Android 4292755842 is called "border". The border property can be set on classes, ids or directly on the HTML element.

This example shows the color as border, it can be applied via the CSS property "border" or "border-color".

```
.border, #border, table{ border:4px solid rgb(222, 65, 130) }
```

If only the border color should be changed use the property `border-color`.

```
.border{ border-color:rgb(222, 65, 130) }
```

If you want to add a box shadow in that color use:

Here you see how a box with a 4 pixel `rgb(222, 65, 130)` colored shadow looks like.

```
.boxshadow{ -moz-box-shadow:4px 4px 4px 4px rgb(222, 65, 130); -webkit-box-shadow:4px 4px 4px 4px rgb(222, 65, 130); box-shadow:4px 4px 4px 4px rgb(222, 65, 130) }
```

Background

The CSS property to change the background color of an element to Android 4292755842 is called "background". The background property can be set on classes, ids or directly on the HTML element.

```
.background, #background, body{  
background: rgb(222, 65, 130) }
```

If only the background color should be changed can be used:

```
.background{ background-color: rgb(222, 65,  
130) }
```

This example shows the color as background, it is applied via the CSS property "background".

To optimize and compress your CSS code, you can use our [online CSS compressor and optimizer](#) based on csstidy. If you want to create a linear or radial gradient as background or border, check our [CSS Gradient Generator](#).

Hey! You found this booklet interesting? Support Converting Colors with the new Membership Option!

The pro membership hides all ads, plus gives you double the colors in the color bucket, and more awesome pro features!

[Learn more, Memberships starting at \\$2.50/m!](#)

**Follow me
on Twitter!**

@ConvertingColor