

Converting Colors

Android(4292759432)

Have a look what the booklet for
Android(4292759432) contains.

Android(4292759432)	3
<i>Conversions</i>	4
<i>Details</i>	6
<i>Harmonies</i>	11
<i>Previews</i>	23
<i>Color Blindness Simulation</i>	26
<i>CSS Examples</i>	29

Color

Android(4292759432)

Conversions

Conversions Part 1

Format	Color
Hex	DE4F88
RGB	222, 79, 136
RGB Percent	87%, 31%, 53%
CMY	0.1294, 0.6902, 0.4667
CMYK	0.00, 0.64, 0.39, 0.13
HSL	336°, 68%, 59%
HSV	336°, 64%, 87%
XYZ	37.3641, 22.8991, 25.7432
YIQ	128.2550, 66.9310, 48.0430

Conversions

Conversions Part 2

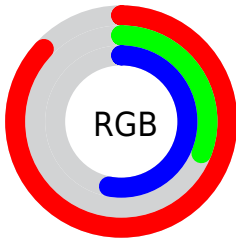
Format	Color
R_{YB}	222, 79, 136
Decimal	14569352
CIE _{Lab}	54.97, 60.38, -1.31
CIE _{LCh}	55, 60.393, 358.756
Yxy	22.8991, 0.4344, 0.2662
Android (android.graphics.Color)	4292759432 (0xFFDE4F88)
YUV	128.2550, 3.8183, 82.2144
Hunter-Lab	47.8530, 55.6317, 1.6012

Details

The Android color **4292759432** is a dark color, and the websafe version is hex **FF6699**. The color can be described as middle muted rose. A complement of this color would be **4283424421**, and the grayscale version is **4286611584**.

A 20% lighter version of the original color is **4294936765**, and **4288808022** is the 20% darker color. If you saturate the color by 10%, you get **4292753787**, and if you desaturate by 10%, it is **4292765077**.

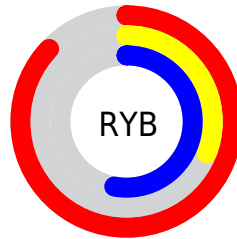
Distribution



Red (87%)

Green (31%)

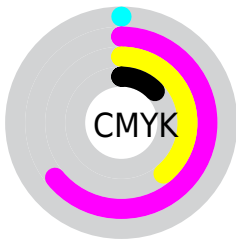
Blue (53%)



Red (87%)

Yellow (31%)

Blue (53%)

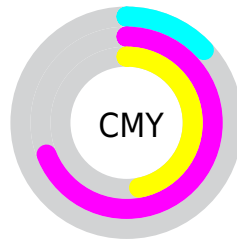


Cyan (0%)

Magenta (64%)

Yellow (39%)

Black (13%)



Cyan (13%)

Magenta (69%)

Yellow (47%)

Brightness & Saturation Gradients

These gradients show how the Android color 4292759432 changes by changing the brightness by 10 percent. The first figure shows a shift by +10% for each color and the second figure -10%.

Similar to the brightness gradients but the following saturation gradients show a change of the Android color 4292759432 by changing the saturation by 10% instead.



4292759432



4292759432

4294967295



4290785647



4294936765



4288808022



4294943961



4286906431



4294951413



4285005866



4294958847



4283170837



4294966271



4281401346



4278190080



4292759432



4292759432



4292753787



4292765077

 4292748141

 4292770723

 4292742240

 4292776624

 4292739160

 4292782269

 4292787915

 4292793560

 4292799205

 4292804595

 4292804607

Harmonies

Analogous

The Analogous color harmony consists of three colors that are next to each other on the color wheel.



4290797499



4292759432



4292761172

Triad

The Triadic color harmony groups three colors that are evenly spaced from another and form a triangle on the color wheel.



4292759432



4285239066



4278228701

Complementary

The Complementary color scheme is a pair of colors which are on the opposite of each other on the color wheel.



4292759432



4283424421

Split Complementary

Split-complementary colors differ from the complementary color scheme. The scheme consists of three colors, the original color and two neighbors of the complement color.



4278229941



4292759432



4278622282

Square

The Square scheme is like the rectangle color scheme, but the four colors are evenly spaced on the color wheel.



4292759432



4288643072



4278230144



4278225645

Rectangle

The Rectangle color scheme consists of four colors that form a rectangle on the color wheel.



4292759432



4291912758



4278230144



4278229457

Sweetspot

The Sweet Spot groups the original color and five complimentary colors.



4292759432



4294954978



4289023966



4286603886



4278190080



4286611584

Same Dimension

The Same Dimension uses a secret algorithm to generate beautiful new colors.



4292759432



4294917001



4292762959



4285556073



4289724486



4281335827

Inverse Universe

The Inverse Universe completely reimagines the original color for something new.



4292759432



4294917001



4283420894



4285556073



4289724486



4281335827

Previews

White Background



This preview shows how the Android color 4292759432 looks on a white background.

Color Contrast Check

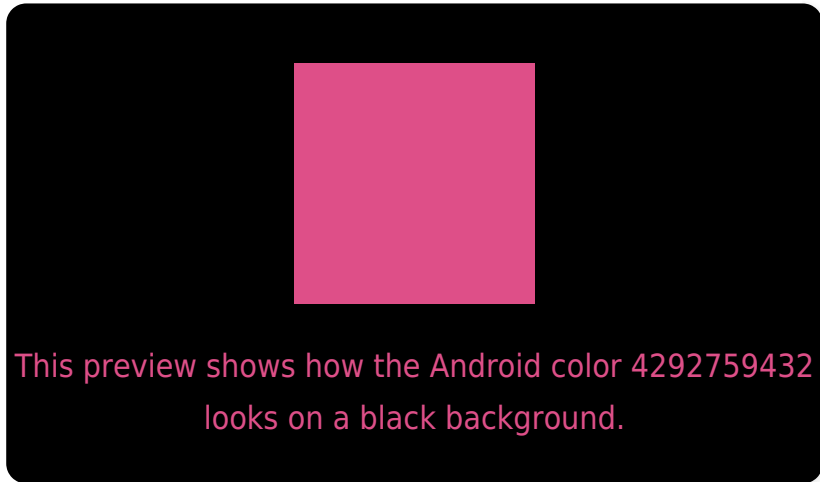
Large Text (above 18pt) WCAG AA ✓ Pass

Any Text WCAG AA ✗ Fail

Large Text (above 18pt) WCAG AAA ✗ Fail

Any Text WCAG AAA ✗ Fail

Black Background



Color Contrast Check

Large Text (above 18pt) WCAG AA ✓ Pass

Any Text WCAG AA ✓ Pass

Large Text (above 18pt) WCAG AAA ✓ Pass

Any Text WCAG AAA × Fail

If you want to check with other color combinations, try the [Color Contrast Checker](#).

Android 4292759432 Background



This preview shows how black text looks on a background with the Android color 4292759432.



This preview shows how white text looks on a background with the Android color 4292759432.

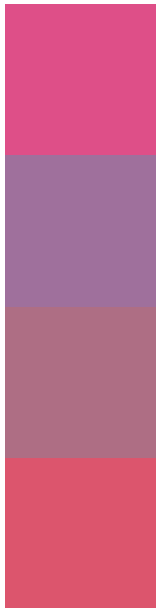
Color Blindness Simulation

Color vision deficiency is a very complex topic, and I could not describe the different causes any better than Wikipedia does, so if you want to learn more, you should check out their [article about color blindness](#).

Dichromacy



Trichromacy



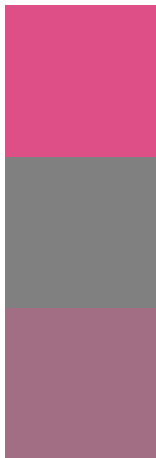
Original Color
4292759432

Protanomaly
4288639132

Deuteranomaly
4289621636

Tritanomaly
4292629869

Monochromacy



Original Color
4292759432

Achromatopsia
4286611584

Achromatomaly
4288835203

CSS Examples

Text

The CSS property to change the color of the text to Android 4292759432 is called "color". The color property can be set on classes, ids or directly on the HTML element.

This example shows how text in the color `rgb(222, 79, 136)` looks like.

```
.text, #text, p{  
    color:rgb(222, 79, 136)  
}
```

If you want to add a text shadow in that color use the text-shadow property, you can generate a text shadow directly with our [CSS Text Shadow Generator](#).

Here you see how black text with a 4 pixel rgb(222, 79, 136) colored shadow looks like.

```
.shadow{ text-shadow: 4px 4px 2px rgb(222, 79, 136) }
```

Border

The CSS property to change the border of an element to Android 4292759432 is called "border". The border property can be set on classes, ids or directly on the HTML element.

This example shows the color as border, it can be applied via the CSS property "border" or "border-color".

```
.border, #border, table{ border:4px solid rgb(222, 79, 136) }
```

If only the border color should be changed use the property `border-color`.

```
.border{ border-color:rgb(222, 79, 136) }
```

If you want to add a box shadow in that color use:

Here you see how a box with a 4 pixel `rgb(222, 79, 136)` colored shadow looks like.

```
.boxshadow{ -moz-box-shadow:4px 4px 4px  
4px rgb(222, 79, 136); -webkit-box-  
shadow:4px 4px 4px 4px rgb(222, 79, 136);  
box-shadow:4px 4px 4px 4px rgb(222, 79,  
136) }
```

Background

The CSS property to change the background color of an element to Android 4292759432 is called "background". The background property can be set on classes, ids or directly on the HTML element.

```
.background, #background, body{  
background: rgb(222, 79, 136) }
```

If only the background color should be changed can be used:

```
.background{ background-color: rgb(222, 79,  
136) }
```

This example shows the color as background, it is applied via the CSS property "background".

To optimize and compress your CSS code, you can use our [online CSS compressor and optimizer](#) based on csstidy. If you want to create a linear or radial gradient as background or border, check our [CSS Gradient Generator](#).

Hey! You found this booklet interesting? Support Converting Colors with the new Membership Option!

The pro membership hides all ads, plus gives you double the colors in the color bucket, and more awesome pro features!

[Learn more, Memberships starting at \\$2.50/m!](#)

**Follow me
on Twitter!**

@ConvertingColor