

Converting Colors

Android(4292760186)

Have a look what the booklet for
Android(4292760186) contains.

Android(4292760186)	3
<i>Conversions</i>	4
<i>Details</i>	6
<i>Harmonies</i>	11
<i>Previews</i>	23
<i>Color Blindness Simulation</i>	26
<i>CSS Examples</i>	29

Color

Android(4292760186)

Conversions

Conversions Part 1

Format	Color
Hex	DE527A
RGB	222, 82, 122
RGB Percent	87%, 32%, 48%
CMY	0.1294, 0.6784, 0.5216
CMYK	0.00, 0.63, 0.45, 0.13
HSL	343°, 68%, 60%
HSV	343°, 63%, 87%
XYZ	36.6543, 22.9693, 20.9140
YIQ	128.4200, 70.6000, 42.1200

Conversions

Conversions Part 2

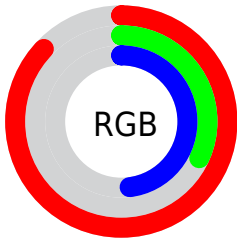
Format	Color
R_{YB}	222, 82, 122
Decimal	14570106
CIE _{Lab}	55.04, 57.73, 7.09
CIE _{LCh}	55, 58.166, 7.000
Yxy	22.9693, 0.4551, 0.2852
Android (android.graphics.Color)	4292760186 (0xFFDE527A)
YUV	128.4200, -3.1651, 82.0697
Hunter-Lab	47.9263, 52.6468, 7.6756

Details

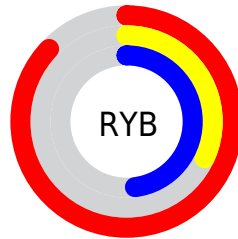
The Android color **4292760186** is a dark color, and the websafe version is hex **CC3366**. The color can be described as middle muted rose. A complement of this color would be **4283621046**, and the grayscale version is **4286611584**.

A 20% lighter version of the original color is **4294937262**, and **4288810826** is the 20% darker color. If you saturate the color by 10%, you get **4292754538**, and if you desaturate by 10%, it is **4292765834**.

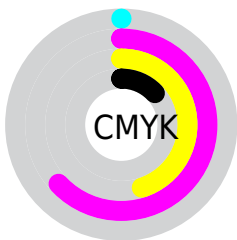
Distribution



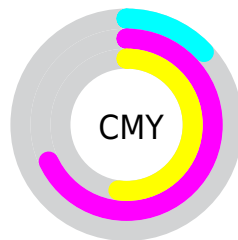
- Red (87%)
- Green (32%)
- Blue (48%)



- Red (87%)
- Yellow (32%)
- Blue (48%)



- Cyan (0%)
- Magenta (63%)
- Yellow (45%)
- Black (13%)



- Cyan (13%)
- Magenta (68%)
- Yellow (52%)

Brightness & Saturation Gradients

These gradients show how the Android color 4292760186 changes by changing the brightness by 10 percent. The first figure shows a shift by +10% for each color and the second figure -10%.

Similar to the brightness gradients but the following saturation gradients show a change of the Android color 4292760186 by changing the saturation by 10% instead.

 4292760186

 4292760186

4294967295

 4290786657

 4294937262

 4288810826

 4294944458

 4286906419

 4294951910

 4284940319

 4294959359

 4283170821

 4294966783

 4281270274

 4278190080

 4292760186

 4292760186

 4292754538

 4292765834

 4292748890

 4292771482

 4292742986

 4292777386

 4292739135

 4292783033

 4292788681

 4292794329

 4292799977

 4292804601

 4292804607

Harmonies

Analogous

The Analogous color harmony consists of three colors that are next to each other on the color wheel.



4291386284



4292760186



4292304458

Triad

The Triadic color harmony groups three colors that are evenly spaced from another and form a triangle on the color wheel.



4292760186



4284322348



4278227936

Complementary

The Complementary color scheme is a pair of colors which are on the opposite of each other on the color wheel.



4292760186



4283621046

Split Complementary

Split-complementary colors differ from the complementary color scheme. The scheme consists of three colors, the original color and two neighbors of the complement color.



4278229695



4292760186



4278229338

Square

The Square scheme is like the rectangle color scheme, but the four colors are evenly spaced on the color wheel.



4292760186



4287792396



4278230159



4279600872

Rectangle

The Rectangle color scheme consists of four colors that form a rectangle on the color wheel.



4292760186



4291259438



4278230159



4278228696

Sweetspot

The Sweet Spot groups the original color and five complimentary colors.



4292760186



4294954972



4290007774



4286603883



4278190080



4286611584

Same Dimension

The Same Dimension uses a secret algorithm to generate beautiful new colors.



4292760186



4294917493



4292767314



4285556072



4289724466



4281335822

Inverse Universe

The Inverse Universe completely reimagines the original color for something new.



4292760186



4294917493



4283613918



4285556072



4289724466



4281335822

Previews

White Background



This preview shows how the Android color 4292760186 looks on a white background.

Color Contrast Check

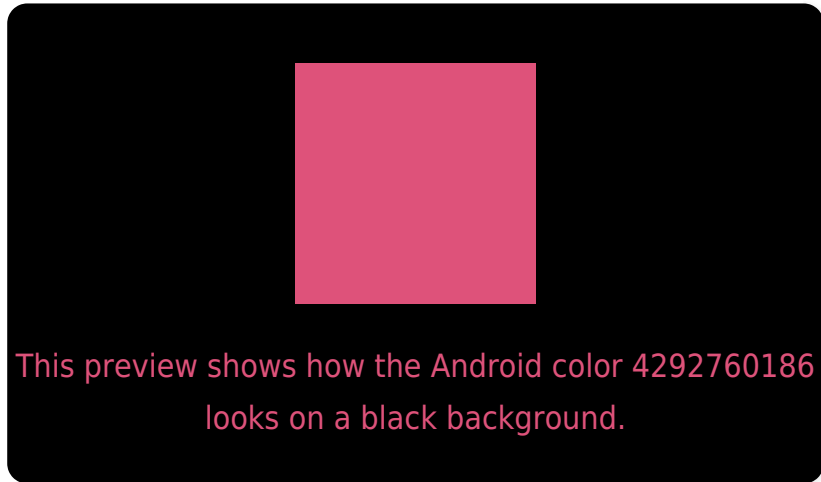
Large Text (above 18pt) WCAG AA ✓ Pass

Any Text WCAG AA ✗ Fail

Large Text (above 18pt) WCAG AAA ✗ Fail

Any Text WCAG AAA ✗ Fail

Black Background



Color Contrast Check

Large Text (above 18pt) WCAG AA ✓ Pass

Any Text WCAG AA ✓ Pass

Large Text (above 18pt) WCAG AAA ✓ Pass

Any Text WCAG AAA × Fail

If you want to check with other color combinations, try the [Color Contrast Checker](#).

Android 4292760186 Background



This preview shows how black text looks on a background with the Android color 4292760186.



This preview shows how white text looks on a background with the Android color 4292760186.

Color Blindness Simulation

Color vision deficiency is a very complex topic, and I could not describe the different causes any better than Wikipedia does, so if you want to learn more, you should check out their [article about color blindness](#).

Dichromacy

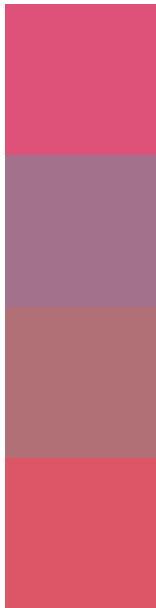


Original Color
4292760186

Protanopia
4286677910

Deuteranopia
4288118643

Trichromacy



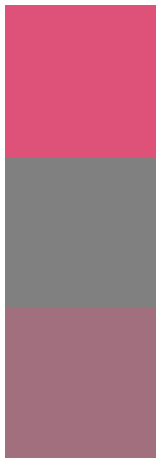
Original Color
4292760186

Protanomaly
4288901516

Deuteranomaly
4289818486

Tritanomaly
4292695656

Monochromacy



Original Color
4292760186

Achromatopsia
4286611584

Achromatomaly
4288835454

CSS Examples

Text

The CSS property to change the color of the text to Android 4292760186 is called "color". The color property can be set on classes, ids or directly on the HTML element.

This example shows how text in the color `rgb(222, 82, 122)` looks like.

```
.text, #text, p{  
    color:rgb(222, 82, 122)  
}
```

If you want to add a text shadow in that color use the text-shadow property, you can generate a text shadow directly with our [CSS Text Shadow Generator](#).

Here you see how black text with a 4 pixel rgb(222, 82, 122) colored shadow looks like.

```
.shadow{ text-shadow: 4px 4px 2px rgb(222, 82, 122) }
```

Border

The CSS property to change the border of an element to Android 4292760186 is called "border". The border property can be set on classes, ids or directly on the HTML element.

This example shows the color as border, it can be applied via the CSS property "border" or "border-color".

```
.border, #border, table{ border:4px solid rgb(222, 82, 122) }
```

If only the border color should be changed use the property `border-color`.

```
.border{ border-color:rgb(222, 82, 122) }
```

If you want to add a box shadow in that color use:

Here you see how a box with a 4 pixel `rgb(222, 82, 122)` colored shadow looks like.

```
.boxshadow{ -moz-box-shadow:4px 4px 4px  
4px rgb(222, 82, 122); -webkit-box-  
shadow:4px 4px 4px 4px rgb(222, 82, 122);  
box-shadow:4px 4px 4px 4px rgb(222, 82,  
122) }
```

Background

The CSS property to change the background color of an element to Android 4292760186 is called "background". The background property can be set on classes, ids or directly on the HTML element.

```
.background, #background, body{  
background: rgb(222, 82, 122) }
```

If only the background color should be changed can be used:

```
.background{ background-color: rgb(222, 82,  
122) }
```

This example shows the color as background, it is applied via the CSS property "background".

To optimize and compress your CSS code, you can use our [online CSS compressor and optimizer](#) based on csstidy. If you want to create a linear or radial gradient as background or border, check our [CSS Gradient Generator](#).

Hey! You found this booklet interesting? Support Converting Colors with the new Membership Option!

The pro membership hides all ads, plus gives you double the colors in the color bucket, and more awesome pro features!

[Learn more, Memberships starting at \\$2.50/m!](#)

**Follow me
on Twitter!**

@ConvertingColor