

# Converting Colors

Android(4292769673)

Have a look what the booklet for  
Android(4292769673) contains.

<b>Android(4292769673)</b> .....	3
<b><i>Conversions</i></b> .....	4
<b><i>Details</i></b> .....	6
<b><i>Harmonies</i></b> .....	11
<b><i>Previews</i></b> .....	23
<b><i>Color Blindness Simulation</i></b> .....	26
<b><i>CSS Examples</i></b> .....	29

# **Color**

**Android(4292769673)**

# Conversions

## Conversions Part 1

Format	Color
Hex	DE7789
RGB	222, 119, 137
RGB Percent	87%, 47%, 54%
CMY	0.1294, 0.5333, 0.4627
CMYK	0.00, 0.46, 0.38, 0.13
HSL	350°, 61%, 67%
HSV	350°, 46%, 87%
XYZ	41.2364, 30.5294, 27.3863
YIQ	151.8490, 55.6100, 27.4340

# Conversions

## Conversions Part 2

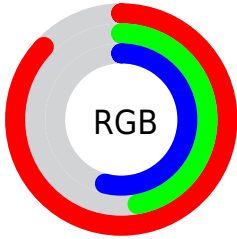
Format	Color
R <sub>Y</sub> B	222, 119, 137
Decimal	14579593
CIE Lab	62.11, 41.84, 8.42
CIE LCh	62, 42.681, 11.381
Yxy	30.5294, 0.4159, 0.3079
Android (android.graphics.Color)	4292769673 (0xFFDE7789)
YUV	151.8490, -7.3206, 61.5224
Hunter-Lab	55.2534, 36.5236, 9.2904

# Details

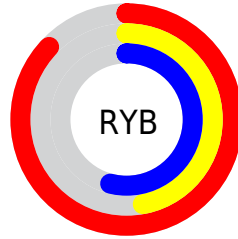
The Android color `4292769673` is a light color, and the websafe version is hex `CC6666`. A complement of this color would be `4286045900`, and the grayscale version is `4288190616`.

A 20% lighter version of the original color is `4294946238`, and `4288955223` is the 20% darker color. If you saturate the color by 10%, you get `4292764023`, and if you desaturate by 10%, it is `4292775323`.

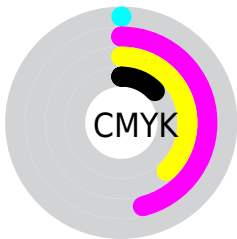
# Distribution



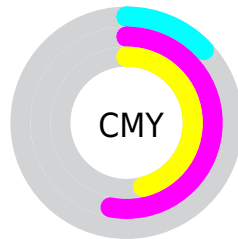
- Red (87%)
- Green (47%)
- Blue (54%)



- Red (87%)
- Yellow (47%)
- Blue (54%)



- Cyan (0%)
- Magenta (46%)
- Yellow (38%)
- Black (13%)



- Cyan (13%)
- Magenta (53%)
- Yellow (46%)

# Brightness & Saturation Gradients

These gradients show how the Android color 4292769673 changes by changing the brightness by 10 percent. The first figure shows a shift by +10% for each color and the second figure -10%.

Similar to the brightness gradients but the following saturation gradients show a change of the Android color 4292769673 by changing the saturation by 10% instead.



 4292769673

 4292769673

4294967295

 4290862448

 4294946238

 4288955223

 4294953434

 4287048000

 4294960886

 4285205034

 4283432982

 4281860097

 4279369728

 4278190080

 4292769673

 4292769673

 4292764023

 4292775323

 4292758372

 4292780974

 4292752466

 4292786880

 4292746816

 4292792530

 4292741165

 4292798181

 4292739111

 4292803831

 4292804607

# Harmonies

## Analogous

The Analogous color harmony consists of three colors that are next to each other on the color wheel.



4291852975



4292769673



4292378214

# Triad

The Triadic color harmony groups three colors that are evenly spaced from another and form a triangle on the color wheel.



4292769673



4285964891



4278231517

# Complementary

The Complementary color scheme is a pair of colors which are on the opposite of each other on the color wheel.



4292769673



4286045900

# Split Complementary

Split-complementary colors differ from the complementary color scheme. The scheme consists of three colors, the original color and two neighbors of the complement color.



4278233031



4292769673



4282427517

# Square

The Square scheme is like the rectangle color scheme, but the four colors are evenly spaced on the color wheel.



4292769673



4288649546



4278233764



4285765088

# Rectangle

The Rectangle color scheme consists of four colors that form a rectangle on the color wheel.



4292769673



4291462996



4278233764



4278232024



# Sweetspot

The Sweet Spot groups the original color and five complimentary colors.



4292769673



4294958050



4291524574



4286605934



4278190080



4286611584



# Same Dimension

The Same Dimension uses a secret algorithm to generate beautiful new colors.



4292769673



4294930569



4292778103



4285556071



4289724447



4281335816



# Inverse Universe

The Inverse Universe completely reimagines the original color for something new.



4292769673



4294930569



4286037470



4285556071



4289724447



4281335816



# Previews

## White Background



This preview shows how the Android color 4292769673 looks on a white background.

## Color Contrast Check

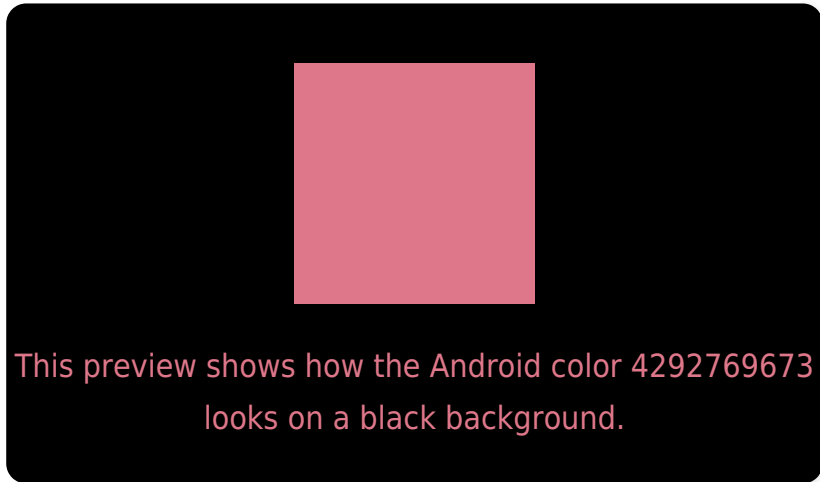
Large Text (above 18pt) WCAG AA × Fail

Any Text WCAG AA × Fail

Large Text (above 18pt) WCAG AAA × Fail

Any Text WCAG AAA × Fail

# Black Background



## Color Contrast Check

Large Text (above 18pt) WCAG AA ✓ Pass

Any Text WCAG AA ✓ Pass

Large Text (above 18pt) WCAG AAA ✓ Pass

Any Text WCAG AAA ✓ Pass

If you want to check with other color combinations, try the [Color Contrast Checker](#).



# Android 4292769673 Background



This preview shows how black text looks on a background with the Android color 4292769673.

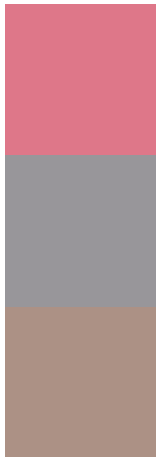


This preview shows how white text looks on a background with the Android color 4292769673.

# Color Blindness Simulation

Color vision deficiency is a very complex topic, and I could not describe the different causes any better than Wikipedia does, so if you want to learn more, you should check out their [article about color blindness](#).

## Dichromacy



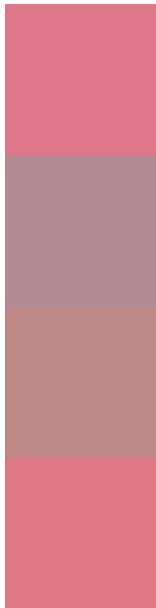
**Original Color**  
4292769673

**Protanopia**  
4288190106

**Deuteranopia**  
4289499525



# Trichromacy



**Original Color**  
4292769673

**Protanomaly**  
4289825684

**Deuteranomaly**  
4290676870

**Tritanomaly**  
4292704388

# Monochromacy



**Original Color**  
4292769673

**Achromatopsia**  
4288190616

**Achromatomaly**  
4289825939

# CSS Examples

## Text

The CSS property to change the color of the text to Android 4292769673 is called "color". The color property can be set on classes, ids or directly on the HTML element.

This example shows how text in the color `rgb(222, 119, 137)` looks like.

```
.text, #text, p{  
    color:rgb(222, 119, 137)  
}
```

If you want to add a text shadow in that color use the text-shadow property, you can generate a text shadow directly with our [CSS Text Shadow Generator](#).

Here you see how black text with a 4 pixel rgb(222, 119, 137) colored shadow looks like.

```
.shadow{ text-shadow: 4px 4px 2px rgb(222, 119, 137) }
```

## Border

The CSS property to change the border of an element to Android 4292769673 is called "border". The border property can be set on classes, ids or directly on the HTML element.

This example shows the color as border, it can be applied via the CSS property "border" or "border-color".

```
.border, #border, table{ border:4px solid rgb(222, 119, 137) }
```

If only the border color should be changed use the property `border-color`.

```
.border{ border-color:rgb(222, 119, 137) }
```

If you want to add a box shadow in that color use:

Here you see how a box with a 4 pixel `rgb(222, 119, 137)` colored shadow looks like.

```
.boxshadow{ -moz-box-shadow:4px 4px 4px  
4px rgb(222, 119, 137); -webkit-box-  
shadow:4px 4px 4px 4px rgb(222, 119, 137);  
box-shadow:4px 4px 4px 4px rgb(222, 119,  
137) }
```

# Background

The CSS property to change the background color of an element to Android 4292769673 is called "background". The background property can be set on classes, ids or directly on the HTML element.

```
.background, #background, body{  
background: rgb(222, 119, 137) }
```

If only the background color should be changed can be used:

```
.background{ background-color: rgb(222,  
119, 137) }
```

This example shows the color as background, it is applied via the CSS property "background".

To optimize and compress your CSS code, you can use our [online CSS compressor and optimizer](#) based on csstidy. If you want to create a linear or radial gradient as background or border, check our [CSS Gradient Generator](#).



Hey! You found this booklet interesting? Support Converting Colors with the new Membership Option!

The pro membership hides all ads, plus gives you double the colors in the color bucket, and more awesome pro features!

**[Learn more, Memberships starting at \\$2.50/m!](#)**

**Follow me  
on Twitter!**

@ConvertingColor