

Converting Colors

Android(4292772328)

Have a look what the booklet for
Android(4292772328) contains.

Android(4292772328)	3
<i>Conversions</i>	4
<i>Details</i>	6
<i>Harmonies</i>	11
<i>Previews</i>	23
<i>Color Blindness Simulation</i>	26
<i>CSS Examples</i>	29

Color

Android(4292772328)

Conversions

Conversions Part 1

Format	Color
Hex	DE81E8
RGB	222, 129, 232
RGB Percent	87%, 51%, 91%
CMY	0.1294, 0.4941, 0.0902
CMYK	0.04, 0.44, 0.00, 0.09
HSL	294°, 69%, 71%
HSV	294°, 44%, 91%
XYZ	52.5399, 37.0563, 80.7274
YIQ	168.5490, 22.3650, 51.7490

Conversions

Conversions Part 2

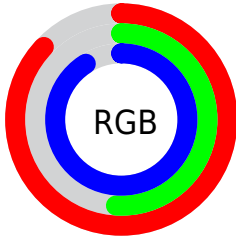
Format	Color
R _Y B	222, 129, 232
Decimal	14582248
CIE Lab	67.32, 51.21, -37.36
CIE LCh	67, 63.395, 323.889
Yxy	37.0563, 0.3085, 0.2176
Android (android.graphics.Color)	4292772328 (0xFFDE81E8)
YUV	168.5490, 31.2813, 46.8765
Hunter-Lab	60.8739, 47.5331, -36.0152

Details

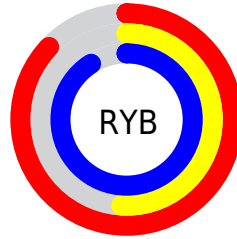
The Android color `4292772328` is a light color, and the websafe version is hex `CC66CC`. A complement of this color would be `4287359105`, and the grayscale version is `4289243304`.

A 20% lighter version of the original color is `4294949119`, and `4289023152` is the 20% darker color. If you saturate the color by 10%, you get `4292635368`, and if you desaturate by 10%, it is `4292909288`.

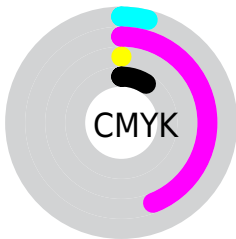
Distribution



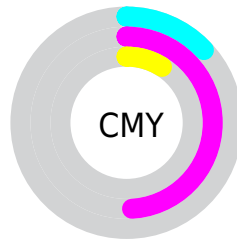
- Red (87%)
- Green (51%)
- Blue (91%)



- Red (87%)
- Yellow (51%)
- Blue (91%)



- Cyan (4%)
- Magenta (44%)
- Yellow (0%)
- Black (9%)



- Cyan (13%)
- Magenta (49%)
- Yellow (9%)

Brightness & Saturation Gradients

These gradients show how the Android color 4292772328 changes by changing the brightness by 10 percent. The first figure shows a shift by +10% for each color and the second figure -10%.

Similar to the brightness gradients but the following saturation gradients show a change of the Android color 4292772328 by changing the saturation by 10% instead.

 4292772328

 4292772328

4294967295

 4290864844

 4294949119

 4289023152

 4294956543

 4287181205

 4294963967

 4285404027

 4283695202

 4281991241

 4280483890

 4278190364

 4278190080

■ 4292772328

■ 4292772328

■ 4292635368

■ 4292909288

■ 4292432872

■ 4293111784

■ 4292295656

■ 4293249000

■ 4292158696

■ 4293385960

■ 4292021736

■ 4293522920

■ 4291887336

■ 4293722088

■ 4293853160

■ 4293984232

■ 4294115304

Harmonies

Analogous

The Analogous color harmony consists of three colors that are next to each other on the color wheel.



4287666943



4292772328



4294930354

Triad

The Triadic color harmony groups three colors that are evenly spaced from another and form a triangle on the color wheel.



4292772328



4291599655



4278239185

Complementary

The Complementary color scheme is a pair of colors which are on the opposite of each other on the color wheel.



4292772328



4287359105

Split Complementary

Split-complementary colors differ from the complementary color scheme. The scheme consists of three colors, the original color and two neighbors of the complement color.



4278239126



4292772328



4287999537

Square

The Square scheme is like the rectangle color scheme, but the four colors are evenly spaced on the color wheel.



4292772328



4294281032



4283087197



4278237951

Rectangle

The Rectangle color scheme consists of four colors that form a rectangle on the color wheel.



4292772328



4294930316



4283087197



4278239166

Sweetspot

The Sweet Spot groups the original color and five complimentary colors.



4292772328



4294762239



4286680040



4286475136



4278190080



4286611584

Same Dimension

The Same Dimension uses a secret algorithm to generate beautiful new colors.



4292772328



4294080767



4293427647



4285687667



4288741555



4281204787

Inverse Universe

The Inverse Universe completely reimagines the original color for something new.



4293427595



4294932613



4286703786



4285753192



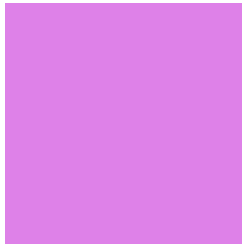
4289921041



4281532421

Previews

White Background



This preview shows how the Android color 4292772328 looks on a white background.

Color Contrast Check

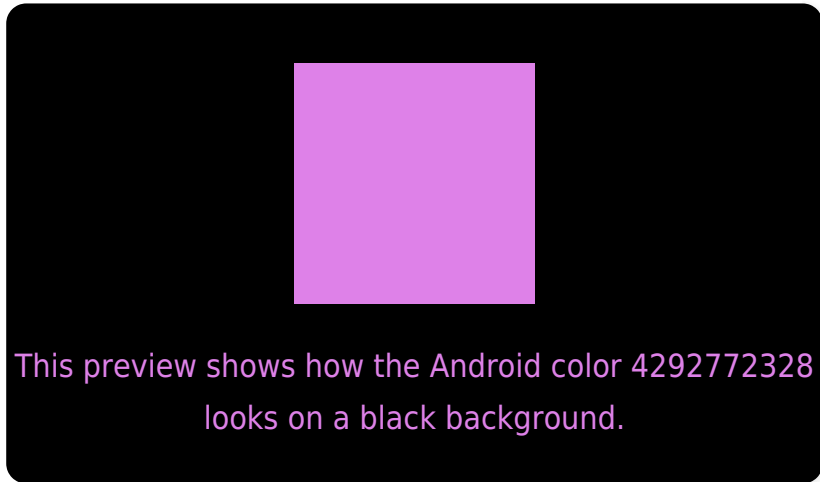
Large Text (above 18pt) WCAG AA × Fail

Any Text WCAG AA × Fail

Large Text (above 18pt) WCAG AAA × Fail

Any Text WCAG AAA × Fail

Black Background



Color Contrast Check

Large Text (above 18pt) WCAG AA ✓ Pass

Any Text WCAG AA ✓ Pass

Large Text (above 18pt) WCAG AAA ✓ Pass

Any Text WCAG AAA ✓ Pass

If you want to check with other color combinations, try the [Color Contrast Checker](#).

Android 4292772328 Background



This preview shows how black text looks on a background with the Android color 4292772328.



This preview shows how white text looks on a background with the Android color 4292772328.

Color Blindness Simulation

Color vision deficiency is a very complex topic, and I could not describe the different causes any better than Wikipedia does, so if you want to learn more, you should check out their [article about color blindness](#).

Dichromacy



Trichromacy



Original Color

4292772328



Protanomaly

4288910839



Deuteranomaly

4289566436



Tritanomaly

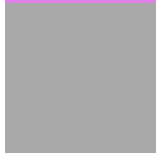
4292381880

Monochromacy



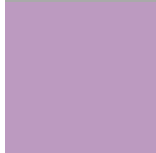
Original Color

4292772328



Achromatopsia

4289309097



Achromatomaly

4290550464

CSS Examples

Text

The CSS property to change the color of the text to Android 4292772328 is called "color". The color property can be set on classes, ids or directly on the HTML element.

This example shows how text in the color `rgb(222, 129, 232)` looks like.

```
.text, #text, p{  
    color:rgb(222, 129, 232)  
}
```

If you want to add a text shadow in that color use the text-shadow property, you can generate a text shadow directly with our [CSS Text Shadow Generator](#).

Here you see how black text with a 4 pixel rgb(222, 129, 232) colored shadow looks like.

```
.shadow{ text-shadow: 4px 4px 2px rgb(222, 129, 232) }
```

Border

The CSS property to change the border of an element to Android 4292772328 is called "border". The border property can be set on classes, ids or directly on the HTML element.

This example shows the color as border, it can be applied via the CSS property "border" or "border-color".

```
.border, #border, table{ border:4px solid rgb(222, 129, 232) }
```

If only the border color should be changed use the property `border-color`.

```
.border{ border-color:rgb(222, 129, 232) }
```

If you want to add a box shadow in that color use:

Here you see how a box with a 4 pixel `rgb(222, 129, 232)` colored shadow looks like.

```
.boxshadow{ -moz-box-shadow:4px 4px 4px 4px rgb(222, 129, 232); -webkit-box-shadow:4px 4px 4px 4px rgb(222, 129, 232); box-shadow:4px 4px 4px 4px rgb(222, 129, 232) }
```

Background

The CSS property to change the background color of an element to Android 4292772328 is called "background". The background property can be set on classes, ids or directly on the HTML element.

```
.background, #background, body{  
background: rgb(222, 129, 232) }
```

If only the background color should be changed can be used:

```
.background{ background-color: rgb(222,  
129, 232) }
```

This example shows the color as background, it is applied via the CSS property "background".

To optimize and compress your CSS code, you can use our [online CSS compressor and optimizer](#) based on csstidy. If you want to create a linear or radial gradient as background or border, check our [CSS Gradient Generator](#).

Hey! You found this booklet interesting? Support Converting Colors with the new Membership Option!

The pro membership hides all ads, plus gives you double the colors in the color bucket, and more awesome pro features!

[Learn more, Memberships starting at \\$2.50/m!](#)

**Follow me
on Twitter!**

@ConvertingColor