

Converting Colors

Android(4292779453)

Have a look what the booklet for
Android(4292779453) contains.

Android(4292779453)	3
<i>Conversions</i>	4
<i>Details</i>	6
<i>Harmonies</i>	11
<i>Previews</i>	23
<i>Color Blindness Simulation</i>	26
<i>CSS Examples</i>	29

Color

Android(4292779453)

Conversions

Conversions Part 1

Format	Color
Hex	DE9DBD
RGB	222, 157, 189
RGB Percent	87%, 62%, 74%
CMY	0.1294, 0.3843, 0.2588
CMYK	0.00, 0.29, 0.15, 0.13
HSL	330°, 50%, 74%
HSV	330°, 29%, 87%
XYZ	51.3665, 43.3177, 53.7979
YIQ	180.0830, 28.4680, 23.7320

Conversions

Conversions Part 2

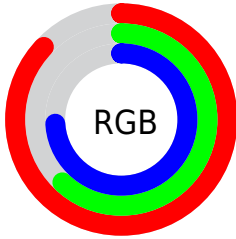
Format	Color
R _Y B	222, 157, 189
Decimal	14589373
CIE Lab	71.77, 28.95, -6.78
CIE LCh	72, 29.736, 346.812
Yxy	43.3177, 0.3459, 0.2917
Android (android.graphics.Color)	4292779453 (0xFFDE9DBD)
YUV	180.0830, 4.3961, 36.7612
Hunter-Lab	65.8162, 24.1328, -2.3922

Details

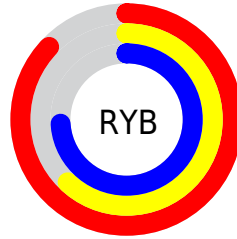
The Android color `4292779453` is a light color, and the websafe version is hex `CC99CC`. A complement of this color would be `4288536254`, and the grayscale version is `4290032820`.

A 20% lighter version of the original color is `4294956277`, and `4289096072` is the 20% darker color. If you saturate the color by 10%, you get `4292773810`, and if you desaturate by 10%, it is `4292785096`.

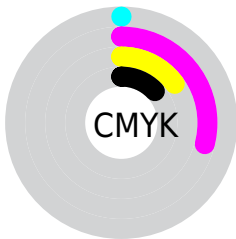
Distribution



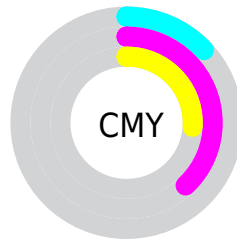
- Red (87%)
- Green (62%)
- Blue (74%)



- Red (87%)
- Yellow (62%)
- Blue (74%)



- Cyan (0%)
- Magenta (29%)
- Yellow (15%)
- Black (13%)



- Cyan (13%)
- Magenta (38%)
- Yellow (26%)

Brightness & Saturation Gradients

These gradients show how the Android color 4292779453 changes by changing the brightness by 10 percent. The first figure shows a shift by +10% for each color and the second figure -10%.

Similar to the brightness gradients but the following saturation gradients show a change of the Android color 4292779453 by changing the saturation by 10% instead.

 4292779453

 4292779453

4294967295

 4290937762

 4294956277

 4289096072

 4294963711

 4287320174

 4285610070

 4283900223

 4282255401

 4280877077

 4278190080

 4292779453

 4292779453

 4292773810

 4292785096

 4292768166

 4292790740

 4292762267

 4292796639

 4292756624

 4292802282

 4292750981

 4292804597

 4292745337

 4292804607

 4292739694

 4292739181

Harmonies

Analogous

The Analogous color harmony consists of three colors that are next to each other on the color wheel.



4291208405



4292779453



4293368993

Triad

The Triadic color harmony groups three colors that are evenly spaced from another and form a triangle on the color wheel.



4292779453



4289966972



4284398807

Complementary

The Complementary color scheme is a pair of colors which are on the opposite of each other on the color wheel.



4292779453



4288536254

Split Complementary

Split-complementary colors differ from the complementary color scheme. The scheme consists of three colors, the original color and two neighbors of the complement color.



4284399551



4292779453



4288002698

Square

The Square scheme is like the rectangle color scheme, but the four colors are evenly spaced on the color wheel.



4292779453



4291734139



4285972131



4286363364

Rectangle

The Rectangle color scheme consists of four colors that form a rectangle on the color wheel.



4292779453



4293173137



4285972131



4284202447

Sweetspot

The Sweet Spot groups the original color and five complimentary colors.



4292779453



4294961395



4290682334



4286607736



4278190080



4286611584

Same Dimension

The Same Dimension uses a secret algorithm to generate beautiful new colors.



4292779453



4294944466



4292779421



4285556075



4289724503



4281335832

Inverse Universe

The Inverse Universe completely reimagines the original color for something new.



4292779453



4294944466



4288536286



4285556075



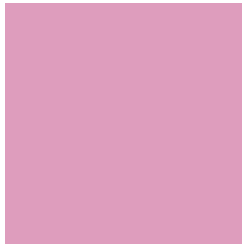
4289724503



4281335832

Previews

White Background



This preview shows how the Android color 4292779453 looks on a white background.

Color Contrast Check

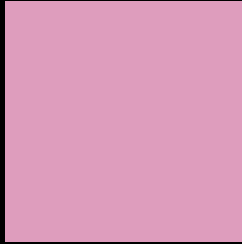
Large Text (above 18pt) WCAG AA × Fail

Any Text WCAG AA × Fail

Large Text (above 18pt) WCAG AAA × Fail

Any Text WCAG AAA × Fail

Black Background



This preview shows how the Android color 4292779453 looks on a black background.

Color Contrast Check

Large Text (above 18pt) WCAG AA ✓ Pass

Any Text WCAG AA ✓ Pass

Large Text (above 18pt) WCAG AAA ✓ Pass

Any Text WCAG AAA ✓ Pass

If you want to check with other color combinations, try the [Color Contrast Checker](#).

Android 4292779453 Background



This preview shows how black text looks on a background with the Android color 4292779453.




This preview shows how white text looks on a background with the Android color 4292779453.

Color Blindness Simulation

Color vision deficiency is a very complex topic, and I could not describe the different causes any better than Wikipedia does, so if you want to learn more, you should check out their [article about color blindness](#).

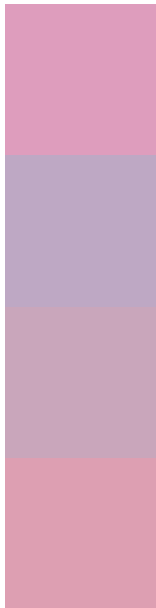
Dichromacy





Tritanopia
4292649132

Trichromacy



Original Color
4292779453

Protanomaly
4290685124

Deuteranomaly
4291405499

Tritanomaly
4292714418

Monochromacy



Original Color
4292779453

Achromatopsia
4290032820

Achromatomaly
4291013815

CSS Examples

Text

The CSS property to change the color of the text to Android 4292779453 is called "color". The color property can be set on classes, ids or directly on the HTML element.

This example shows how text in the color `rgb(222, 157, 189)` looks like.

```
.text, #text, p{  
    color:rgb(222, 157, 189)  
}
```

If you want to add a text shadow in that color use the text-shadow property, you can generate a text shadow directly with our [CSS Text Shadow Generator](#).

Here you see how black text with a 4 pixel rgb(222, 157, 189) colored shadow looks like.

```
.shadow{ text-shadow: 4px 4px 2px rgb(222, 157, 189) }
```

Border

The CSS property to change the border of an element to Android 4292779453 is called "border". The border property can be set on classes, ids or directly on the HTML element.

This example shows the color as border, it can be applied via the CSS property "border" or "border-color".

```
.border, #border, table{ border:4px solid rgb(222, 157, 189) }
```

If only the border color should be changed use the property `border-color`.

```
.border{ border-color:rgb(222, 157, 189) }
```

If you want to add a box shadow in that color use:

Here you see how a box with a 4 pixel `rgb(222, 157, 189)` colored shadow looks like.

```
.boxshadow{ -moz-box-shadow:4px 4px 4px 4px rgb(222, 157, 189); -webkit-box-shadow:4px 4px 4px 4px rgb(222, 157, 189); box-shadow:4px 4px 4px 4px rgb(222, 157, 189) }
```

Background

The CSS property to change the background color of an element to Android 4292779453 is called "background". The background property can be set on classes, ids or directly on the HTML element.

```
.background, #background, body{  
background: rgb(222, 157, 189) }
```

If only the background color should be changed can be used:

```
.background{ background-color: rgb(222,  
157, 189) }
```

This example shows the color as background, it is applied via the CSS property "background".

To optimize and compress your CSS code, you can use our [online CSS compressor and optimizer](#) based on csstidy. If you want to create a linear or radial gradient as background or border, check our [CSS Gradient Generator](#).

Hey! You found this booklet interesting? Support Converting Colors with the new Membership Option!

The pro membership hides all ads, plus gives you double the colors in the color bucket, and more awesome pro features!

[Learn more, Memberships starting at \\$2.50/m!](#)

**Follow me
on Twitter!**

@ConvertingColor