

# Converting Colors

Android(4292780721)

Have a look what the booklet for  
Android(4292780721) contains.

<b>Android(4292780721)</b> .....	3
<i><b>Conversions</b></i> .....	4
<i><b>Details</b></i> .....	6
<i><b>Harmonies</b></i> .....	11
<i><b>Previews</b></i> .....	23
<i><b>Color Blindness Simulation</b></i> .....	26
<i><b>CSS Examples</b></i> .....	29

# **Color**

**Android(4292780721)**

# Conversions

## Conversions Part 1

Format	Color
Hex	DEA2B1
RGB	222, 162, 177
RGB Percent	87%, 64%, 69%
CMY	0.1294, 0.3647, 0.3059
CMYK	0.00, 0.27, 0.20, 0.13
HSL	345°, 48%, 75%
HSV	345°, 27%, 87%
XYZ	50.9803, 44.5446, 47.5060
YIQ	181.6500, 30.9450, 17.3850

# Conversions

## Conversions Part 2

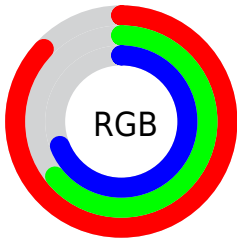
<b>Format</b>	<b>Color</b>
R <sub>Y</sub> B	222, 162, 177
Decimal	14590641
CIE Lab	72.59, 24.39, 1.05
CIE LCh	73, 24.413, 2.470
Yxy	44.5446, 0.3564, 0.3114
Android (android.graphics.Color)	4292780721 (0xFFDEA2B1)
YUV	181.6500, -2.2924, 35.3870
Hunter-Lab	66.7417, 19.5483, 4.5173

# Details

The Android color `4292780721` is a light color, and the websafe version is hex `CC9999`. A complement of this color would be `4288863951`, and the grayscale version is `4290164406`.

A 20% lighter version of the original color is `4294957545`, and `4289097341` is the 20% darker color. If you saturate the color by 10%, you get `4292775072`, and if you desaturate by 10%, it is `4292786370`.

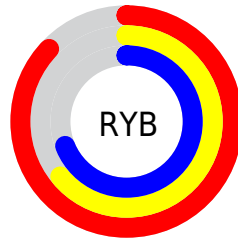
# Distribution



Red (87%)

Green (64%)

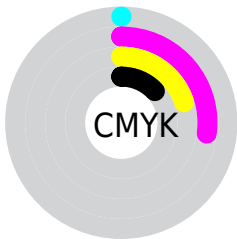
Blue (69%)



Red (87%)

Yellow (64%)

Blue (69%)

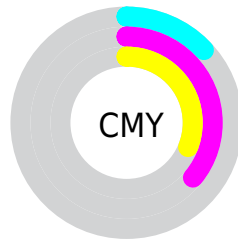


Cyan (0%)

Magenta (27%)

Yellow (20%)

Black (13%)



Cyan (13%)

Magenta (36%)

Yellow (31%)

# Brightness & Saturation Gradients

These gradients show how the Android color 4292780721 changes by changing the brightness by 10 percent. The first figure shows a shift by +10% for each color and the second figure -10%.

Similar to the brightness gradients but the following saturation gradients show a change of the Android color 4292780721 by changing the saturation by 10% instead.



 4292780721

 4292780721

4294967295

 4290939030

 4294957545

 4289097341

 4294964991

 4287321444

 4285611340

 4283901493

 4282257440

 4280877064

 4278190080

 4292780721

 4292780721

 4292775072

 4292786370

 4292769424

 4292792018

 4292763519

 4292797923

 4292757870

 4292803572

 4292752222

 4292804607

 4292746573

 4292740924

 4292739128

# Harmonies

## Analogous

The Analogous color harmony consists of three colors that are next to each other on the color wheel.



4291929543



4292780721



4292846747

# Triad

The Triadic color harmony groups three colors that are evenly spaced from another and form a triangle on the color wheel.



4292780721



4289312908



4286495449

# Complementary

The Complementary color scheme is a pair of colors which are on the opposite of each other on the color wheel.



4292780721



4288863951

# Split Complementary

Split-complementary colors differ from the complementary color scheme. The scheme consists of three colors, the original color and two neighbors of the complement color.



4285710025



4292780721



4287610269

# Square

The Square scheme is like the rectangle color scheme, but the four colors are evenly spaced on the color wheel.



4292780721



4290883974



4286234547



4288328670

# Rectangle

The Rectangle color scheme consists of four colors that form a rectangle on the color wheel.



4292780721



4292454288



4286234547



4286102741



# Sweetspot

The Sweet Spot groups the original color and five complimentary colors.



4292780721



4294962160



4291797726



4286608246



4278190080



4286611584



# Same Dimension

The Same Dimension uses a secret algorithm to generate beautiful new colors.



4292780721



4294946242



4292784546



4285556072



4289724460



4281335820



# Inverse Universe

The Inverse Universe completely reimagines the original color for something new.



4292780721



4294946242



4288860126



4285556072



4289724460

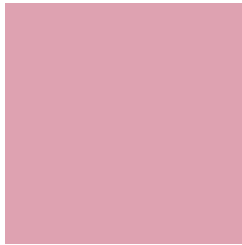


4281335820



# Previews

## White Background



This preview shows how the Android color 4292780721 looks on a white background.

## Color Contrast Check

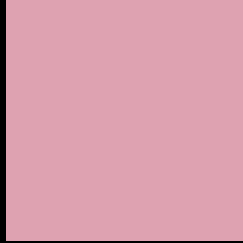
Large Text (above 18pt) WCAG AA × Fail

Any Text WCAG AA × Fail

Large Text (above 18pt) WCAG AAA × Fail

Any Text WCAG AAA × Fail

# Black Background



This preview shows how the Android color 4292780721 looks on a black background.

## Color Contrast Check

Large Text (above 18pt) WCAG AA ✓ Pass

Any Text WCAG AA ✓ Pass

Large Text (above 18pt) WCAG AAA ✓ Pass

Any Text WCAG AAA ✓ Pass

If you want to check with other color combinations, try the [Color Contrast Checker](#).



# Android 4292780721 Background



This preview shows how black text looks on a background with the Android color 4292780721.



This preview shows how white text looks on a background with the Android color 4292780721.

# Color Blindness Simulation

Color vision deficiency is a very complex topic, and I could not describe the different causes any better than Wikipedia does, so if you want to learn more, you should check out their [article about color blindness](#).

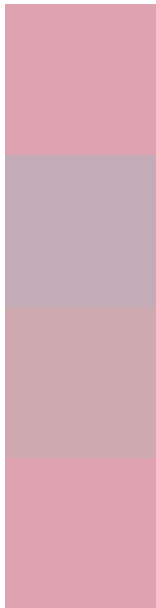
## Dichromacy





**Tritanopia**  
4292780719

# Trichromacy



**Original Color**  
4292780721

**Protanomaly**  
4291013815

**Deuteranomaly**  
4291733936

**Tritanomaly**  
4292780720

# Monochromacy



**Original Color**  
4292780721

**Achromatopsia**  
4290164406

**Achromatomaly**  
4291145652

# CSS Examples

## Text

The CSS property to change the color of the text to Android 4292780721 is called "color". The color property can be set on classes, ids or directly on the HTML element.

This example shows how text in the color `rgb(222, 162, 177)` looks like.

```
.text, #text, p{  
    color:rgb(222, 162, 177)  
}
```

If you want to add a text shadow in that color use the text-shadow property, you can generate a text shadow directly with our [CSS Text Shadow Generator](#).

Here you see how black text with a 4 pixel rgb(222, 162, 177) colored shadow looks like.

```
.shadow{ text-shadow: 4px 4px 2px rgb(222, 162, 177) }
```

## Border

The CSS property to change the border of an element to Android 4292780721 is called "border". The border property can be set on classes, ids or directly on the HTML element.

This example shows the color as border, it can be applied via the CSS property "border" or "border-color".

```
.border, #border, table{ border:4px solid rgb(222, 162, 177) }
```

If only the border color should be changed use the property `border-color`.

```
.border{ border-color:rgb(222, 162, 177) }
```

If you want to add a box shadow in that color use:

Here you see how a box with a 4 pixel `rgb(222, 162, 177)` colored shadow looks like.

```
.boxshadow{ -moz-box-shadow:4px 4px 4px  
4px rgb(222, 162, 177); -webkit-box-  
shadow:4px 4px 4px 4px rgb(222, 162, 177);  
box-shadow:4px 4px 4px 4px rgb(222, 162,  
177) }
```

# Background

The CSS property to change the background color of an element to Android 4292780721 is called "background". The background property can be set on classes, ids or directly on the HTML element.

```
.background, #background, body{  
background: rgb(222, 162, 177) }
```

If only the background color should be changed can be used:

```
.background{ background-color: rgb(222,  
162, 177) }
```

This example shows the color as background, it is applied via the CSS property "background".

To optimize and compress your CSS code, you can use our [online CSS compressor and optimizer](#) based on csstidy. If you want to create a linear or radial gradient as background or border, check our [CSS Gradient Generator](#).



Hey! You found this booklet interesting? Support Converting Colors with the new Membership Option!

The pro membership hides all ads, plus gives you double the colors in the color bucket, and more awesome pro features!

**[Learn more, Memberships starting at \\$2.50/m!](#)**

**Follow me  
on Twitter!**

@ConvertingColor