

Converting Colors

Android(4292783548)

Have a look what the booklet for
Android(4292783548) contains.

Android(4292783548)	3
<i>Conversions</i>	4
<i>Details</i>	6
<i>Harmonies</i>	11
<i>Previews</i>	23
<i>Color Blindness Simulation</i>	26
<i>CSS Examples</i>	29

Color

Android(4292783548)

Conversions

Conversions Part 1

Format	Color
Hex	DEADBC
RGB	222, 173, 188
RGB Percent	87%, 68%, 74%
CMY	0.1294, 0.3216, 0.2627
CMYK	0.00, 0.22, 0.15, 0.13
HSL	342°, 43%, 77%
HSV	342°, 22%, 87%
XYZ	54.1449, 49.0476, 54.1903
YIQ	189.3610, 24.3890, 15.0530

Conversions

Conversions Part 2

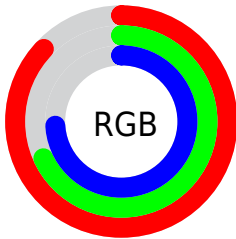
Format	Color
R _Y B	222, 173, 188
Decimal	14593468
CIE Lab	75.48, 20.17, -0.77
CIE LCh	75, 20.186, 357.814
Yxy	49.0476, 0.3440, 0.3116
Android (android.graphics.Color)	4292783548 (0xFFDEADBC)
YUV	189.3610, -0.6710, 28.6244
Hunter-Lab	70.0340, 15.4430, 3.1468

Details

The Android color `4292783548` is a light color, and the websafe version is hex `CC9999`. A complement of this color would be `4289584847`, and the grayscale version is `4290624957`.

A 20% lighter version of the original color is `4294960628`, and `4289099911` is the 20% darker color. If you saturate the color by 10%, you get `4292777901`, and if you desaturate by 10%, it is `4292789195`.

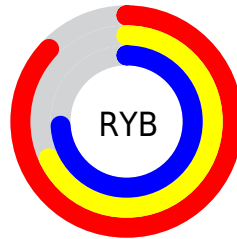
Distribution



Red (87%)

Green (68%)

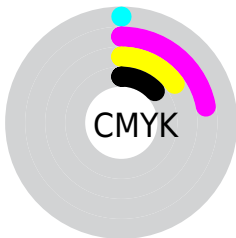
Blue (74%)



Red (87%)

Yellow (68%)

Blue (74%)

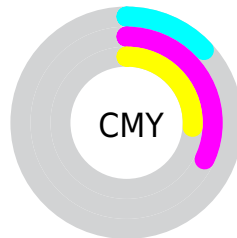


Cyan (0%)

Magenta (22%)

Yellow (15%)

Black (13%)



Cyan (13%)

Magenta (32%)

Yellow (26%)

Brightness & Saturation Gradients

These gradients show how the Android color 4292783548 changes by changing the brightness by 10 percent. The first figure shows a shift by +10% for each color and the second figure -10%.

Similar to the brightness gradients but the following saturation gradients show a change of the Android color 4292783548 by changing the saturation by 10% instead.

 4292783548

 4292783548

4294967295

 4290941601

 4294960628

 4289099911

 4287324014

 4285613909

 4283969598

 4282391080

 4280878100

 4278321152

 4278190080

 4292783548

 4292783548

 4292777901

 4292789195

 4292772253

 4292794843

 4292766350

 4292800746

 4292760702

 4292804602

 4292755055

 4292804607

 4292749408

 4292743760

 4292739140

Harmonies

Analogous

The Analogous color harmony consists of three colors that are next to each other on the color wheel.



4291932366



4292783548



4292980393

Triad

The Triadic color harmony groups three colors that are evenly spaced from another and form a triangle on the color wheel.



4292783548



4290166425



4287611353

Complementary

The Complementary color scheme is a pair of colors which are on the opposite of each other on the color wheel.



4292783548



4289584847

Split Complementary

Split-complementary colors differ from the complementary color scheme. The scheme consists of three colors, the original color and two neighbors of the complement color.



4287087819



4292783548



4288725670

Square

The Square scheme is like the rectangle color scheme, but the four colors are evenly spaced on the color wheel.



4292783548



4291475605



4287612344



4288920799

Rectangle

The Rectangle color scheme consists of four colors that form a rectangle on the color wheel.



4292783548



4292718751



4287612344



4287349461

Sweetspot

The Sweet Spot groups the original color and five complimentary colors.



4292783548



4294962675



4291735006



4286608760



4278190080



4286611584

Same Dimension

The Same Dimension uses a secret algorithm to generate beautiful new colors.



4292783548



4294950353



4292785837



4285556072



4289724470



4281335823

Inverse Universe

The Inverse Universe completely reimagines the original color for something new.



4292783548



4294950353



4289582558



4285556072



4289724470



4281335823

Previews

White Background



This preview shows how the Android color 4292783548 looks on a white background.

Color Contrast Check

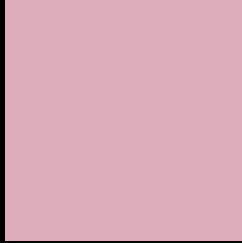
Large Text (above 18pt) WCAG AA × Fail

Any Text WCAG AA × Fail

Large Text (above 18pt) WCAG AAA × Fail

Any Text WCAG AAA × Fail

Black Background



This preview shows how the Android color 4292783548 looks on a black background.

Color Contrast Check

Large Text (above 18pt) WCAG AA ✓ Pass

Any Text WCAG AA ✓ Pass

Large Text (above 18pt) WCAG AAA ✓ Pass

Any Text WCAG AAA ✓ Pass

If you want to check with other color combinations, try the [Color Contrast Checker](#).

Android 4292783548 Background



This preview shows how black text looks on a background with the Android color 4292783548.



This preview shows how white text looks on a background with the Android color 4292783548.

Color Blindness Simulation

Color vision deficiency is a very complex topic, and I could not describe the different causes any better than Wikipedia does, so if you want to learn more, you should check out their [article about color blindness](#).


Dichromacy



Original Color
4292783548

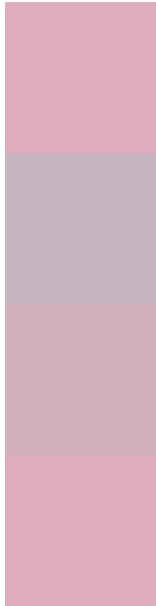
Protanopia
4290492867

Deuteranopia
4291605691



Tritanopia
4292783547

Trichromacy



Original Color
4292783548

Protanomaly
4291343808

Deuteranomaly
4292063675

Tritanomaly
4292783547

Monochromacy



Original Color
4292783548

Achromatopsia
4290624957

Achromatomaly
4291409853

CSS Examples

Text

The CSS property to change the color of the text to Android 4292783548 is called "color". The color property can be set on classes, ids or directly on the HTML element.

This example shows how text in the color `rgb(222, 173, 188)` looks like.

```
.text, #text, p{  
    color:rgb(222, 173, 188)  
}
```

If you want to add a text shadow in that color use the text-shadow property, you can generate a text shadow directly with our [CSS Text Shadow Generator](#).

Here you see how black text with a 4 pixel rgb(222, 173, 188) colored shadow looks like.

```
.shadow{ text-shadow: 4px 4px 2px rgb(222, 173, 188) }
```

Border

The CSS property to change the border of an element to Android 4292783548 is called "border". The border property can be set on classes, ids or directly on the HTML element.

This example shows the color as border, it can be applied via the CSS property "border" or "border-color".

```
.border, #border, table{ border:4px solid rgb(222, 173, 188) }
```

If only the border color should be changed use the property `border-color`.

```
.border{ border-color:rgb(222, 173, 188) }
```

If you want to add a box shadow in that color use:

Here you see how a box with a 4 pixel `rgb(222, 173, 188)` colored shadow looks like.

```
.boxshadow{ -moz-box-shadow:4px 4px 4px  
4px rgb(222, 173, 188); -webkit-box-  
shadow:4px 4px 4px 4px rgb(222, 173, 188);  
box-shadow:4px 4px 4px 4px rgb(222, 173,  
188) }
```

Background

The CSS property to change the background color of an element to Android 4292783548 is called "background". The background property can be set on classes, ids or directly on the HTML element.

```
.background, #background, body{  
background: rgb(222, 173, 188) }
```

If only the background color should be changed can be used:

```
.background{ background-color: rgb(222,  
173, 188) }
```

This example shows the color as background, it is applied via the CSS property "background".

To optimize and compress your CSS code, you can use our [online CSS compressor and optimizer](#) based on csstidy. If you want to create a linear or radial gradient as background or border, check our [CSS Gradient Generator](#).

Hey! You found this booklet interesting? Support Converting Colors with the new Membership Option!

The pro membership hides all ads, plus gives you double the colors in the color bucket, and more awesome pro features!

[Learn more, Memberships starting at \\$2.50/m!](#)

**Follow me
on Twitter!**

@ConvertingColor