

# Converting Colors

Android(4292784061)

Have a look what the booklet for  
Android(4292784061) contains.

<b>Android(4292784061)</b> .....	3
<b><i>Conversions</i></b> .....	4
<b><i>Details</i></b> .....	6
<b><i>Harmonies</i></b> .....	11
<b><i>Previews</i></b> .....	23
<b><i>Color Blindness Simulation</i></b> .....	26
<b><i>CSS Examples</i></b> .....	29

# **Color**

**Android(4292784061)**

# Conversions

## Conversions Part 1

Format	Color
Hex	DEAFBD
RGB	222, 175, 189
RGB Percent	87%, 69%, 74%
CMY	0.1294, 0.3137, 0.2588
CMYK	0.00, 0.21, 0.15, 0.13
HSL	342°, 42%, 78%
HSV	342°, 21%, 87%
XYZ	54.6395, 49.8637, 54.8889
YIQ	190.6490, 23.5180, 14.3180

# Conversions

## Conversions Part 2

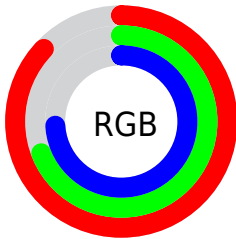
Format	Color
R <sub>Y</sub> B	222, 175, 189
Decimal	14593981
CIE Lab	75.99, 19.25, -0.58
CIE LCh	76, 19.264, 358.280
Yxy	49.8637, 0.3428, 0.3128
Android (android.graphics.Color)	4292784061 (0xFFDEAFBD)
YUV	190.6490, -0.8130, 27.4948
Hunter-Lab	70.6142, 14.5439, 3.3434

# Details

The Android color `4292784061` is a light color, and the websafe version is hex `CC9999`. A complement of this color would be `4289715920`, and the grayscale version is `4290756543`.

A 20% lighter version of the original color is `4294961141`, and `4289100424` is the 20% darker color. If you saturate the color by 10%, you get `4292778413`, and if you desaturate by 10%, it is `4292789709`.

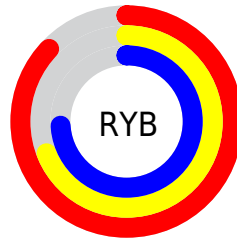
# Distribution



Red (87%)

Green (69%)

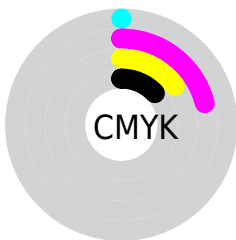
Blue (74%)



Red (87%)

Yellow (69%)

Blue (74%)

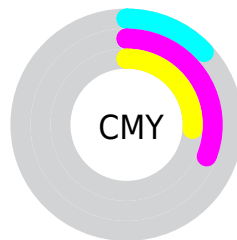


Cyan (0%)

Magenta (21%)

Yellow (15%)

Black (13%)



Cyan (13%)

Magenta (31%)

Yellow (26%)

# Brightness & Saturation Gradients

These gradients show how the Android color 4292784061 changes by changing the brightness by 10 percent. The first figure shows a shift by +10% for each color and the second figure -10%.

Similar to the brightness gradients but the following saturation gradients show a change of the Android color 4292784061 by changing the saturation by 10% instead.



 4292784061

 4292784061

4294967295

 4290942114

 4294961141

 4289100424

 4287390062

 4285679958

 4283970111

 4282391593

 4280878613

 4278517760

 4278190080

 4292784061

 4292784061

 4292778413

 4292789709

 4292772766

 4292795356

 4292766862

 4292801260

 4292761215

 4292804603

 4292755567

 4292804607

 4292749919

 4292744272

 4292739138

# Harmonies

## Analogous

The Analogous color harmony consists of three colors that are next to each other on the color wheel.



4291998414



4292784061



4292915371

# Triad

The Triadic color harmony groups three colors that are evenly spaced from another and form a triangle on the color wheel.



4292784061



4290232220



4287873753

# Complementary

The Complementary color scheme is a pair of colors which are on the opposite of each other on the color wheel.



4292784061



4289715920

# Split Complementary

Split-complementary colors differ from the complementary color scheme. The scheme consists of three colors, the original color and two neighbors of the complement color.



4287415755



4292784061



4288922792

# Square

The Square scheme is like the rectangle color scheme, but the four colors are evenly spaced on the color wheel.



4292784061



4291476120



4287809210



4289117662

# Rectangle

The Rectangle color scheme consists of four colors that form a rectangle on the color wheel.



4292784061



4292719265



4287809210



4287611861



# Sweetspot

The Sweet Spot groups the original color and five complimentary colors.



4292784061



4294963444



4291866590



4286609273



4278190080



4286611584



# Same Dimension

The Same Dimension uses a secret algorithm to generate beautiful new colors.



4292784061



4294950866



4292786351



4285556072



4289724468



4281335822



# Inverse Universe

The Inverse Universe completely reimagines the original color for something new.



4292784061



4294950866



4289713630



4285556072



4289724468



4281335822



# Previews

## White Background



This preview shows how the Android color 4292784061 looks on a white background.

## Color Contrast Check

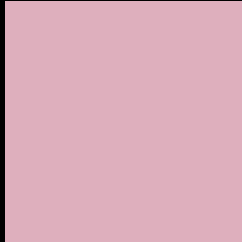
Large Text (above 18pt) WCAG AA × Fail

Any Text WCAG AA × Fail

Large Text (above 18pt) WCAG AAA × Fail

Any Text WCAG AAA × Fail

# Black Background



This preview shows how the Android color 4292784061 looks on a black background.

## Color Contrast Check

Large Text (above 18pt) WCAG AA ✓ Pass

Any Text WCAG AA ✓ Pass

Large Text (above 18pt) WCAG AAA ✓ Pass

Any Text WCAG AAA ✓ Pass

If you want to check with other color combinations, try the [Color Contrast Checker](#).



# Android 4292784061 Background



This preview shows how black text looks on a background with the Android color 4292784061.



This preview shows how white text looks on a background with the Android color 4292784061.

# Color Blindness Simulation

Color vision deficiency is a very complex topic, and I could not describe the different causes any better than Wikipedia does, so if you want to learn more, you should check out their [article about color blindness](#).

## Dichromacy



**Original Color**  
4292784061

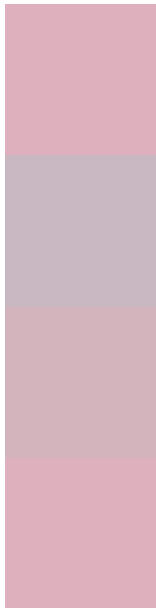
**Protanopia**  
4290624452

**Deuteranopia**  
4291671740



**Tritanopia**  
4292784061

# Trichromacy



**Original Color**  
4292784061

**Protanomaly**  
4291409857

**Deuteranomaly**  
4292064188

**Tritanomaly**  
4292784061

# Monochromacy



**Original Color**  
4292784061

**Achromatopsia**  
4290756543

**Achromatomaly**  
4291475902

# CSS Examples

## Text

The CSS property to change the color of the text to Android 4292784061 is called "color". The color property can be set on classes, ids or directly on the HTML element.

This example shows how text in the color `rgb(222, 175, 189)` looks like.

```
.text, #text, p{  
    color:rgb(222, 175, 189)  
}
```

If you want to add a text shadow in that color use the text-shadow property, you can generate a text shadow directly with our [CSS Text Shadow Generator](#).

Here you see how black text with a 4 pixel rgb(222, 175, 189) colored shadow looks like.

```
.shadow{ text-shadow: 4px 4px 2px rgb(222, 175, 189) }
```

## Border

The CSS property to change the border of an element to Android 4292784061 is called "border". The border property can be set on classes, ids or directly on the HTML element.

This example shows the color as border, it can be applied via the CSS property "border" or "border-color".

```
.border, #border, table{ border:4px solid rgb(222, 175, 189) }
```

If only the border color should be changed use the property `border-color`.

```
.border{ border-color:rgb(222, 175, 189) }
```

If you want to add a box shadow in that color use:

Here you see how a box with a 4 pixel `rgb(222, 175, 189)` colored shadow looks like.

```
.boxshadow{ -moz-box-shadow:4px 4px 4px  
4px rgb(222, 175, 189); -webkit-box-  
shadow:4px 4px 4px 4px rgb(222, 175, 189);  
box-shadow:4px 4px 4px 4px rgb(222, 175,  
189) }
```

# Background

The CSS property to change the background color of an element to Android 4292784061 is called "background". The background property can be set on classes, ids or directly on the HTML element.

```
.background, #background, body{  
background: rgb(222, 175, 189) }
```

If only the background color should be changed can be used:

```
.background{ background-color: rgb(222,  
175, 189) }
```

This example shows the color as background, it is applied via the CSS property "background".

To optimize and compress your CSS code, you can use our [online CSS compressor and optimizer](#) based on csstidy. If you want to create a linear or radial gradient as background or border, check our [CSS Gradient Generator](#).



Hey! You found this booklet interesting? Support Converting Colors with the new Membership Option!

The pro membership hides all ads, plus gives you double the colors in the color bucket, and more awesome pro features!

**[Learn more, Memberships starting at \\$2.50/m!](#)**

**Follow me  
on Twitter!**

@ConvertingColor