

Converting Colors

Android(4292785296)

Have a look what the booklet for
Android(4292785296) contains.

Android(4292785296)	3
<i>Conversions</i>	4
<i>Details</i>	6
<i>Harmonies</i>	11
<i>Previews</i>	23
<i>Color Blindness Simulation</i>	26
<i>CSS Examples</i>	29

Color

Android(4292785296)

Conversions

Conversions Part 1

Format	Color
Hex	DEB490
RGB	222, 180, 144
RGB Percent	87%, 71%, 56%
CMY	0.1294, 0.2941, 0.4353
CMYK	0.00, 0.19, 0.35, 0.13
HSL	28°, 54%, 72%
HSV	28°, 35%, 87%
XYZ	51.4795, 50.1857, 33.3591
YIQ	188.4540, 36.5880, -2.2920

Conversions

Conversions Part 2

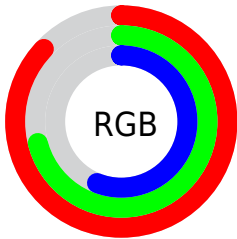
Format	Color
R _Y B	222, 211, 144
Decimal	14595216
CIE Lab	76.18, 10.23, 24.11
CIE LCh	76, 26.188, 67.009
Yxy	50.1857, 0.3813, 0.3717
Android (android.graphics.Color)	4292785296 (0xFFDEB490)
YUV	188.4540, -21.9158, 29.4198
Hunter-Lab	70.8419, 5.7394, 21.6699

Details

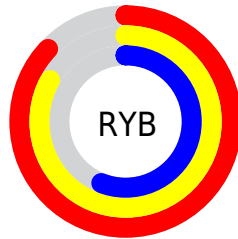
The Android color `4292785296` is a light color, and the websafe version is hex `FFCC99`. A complement of this color would be `4287675102`, and the grayscale version is `4290624957`.

A 20% lighter version of the original color is `4294962374`, and `4289101661` is the 20% darker color. If you saturate the color by 10%, you get `4292782202`, and if you desaturate by 10%, it is `4292788390`.

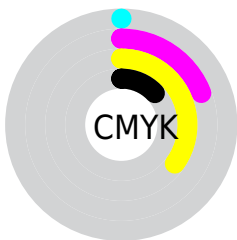
Distribution



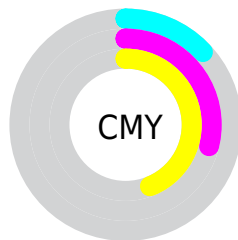
- Red (87%)
- Green (71%)
- Blue (56%)



- Red (87%)
- Yellow (83%)
- Blue (56%)



- Cyan (0%)
- Magenta (19%)
- Yellow (35%)
- Black (13%)



- Cyan (13%)
- Magenta (29%)
- Yellow (44%)

Brightness & Saturation Gradients

These gradients show how the Android color 4292785296 changes by changing the brightness by 10 percent. The first figure shows a shift by +10% for each color and the second figure -10%.

Similar to the brightness gradients but the following saturation gradients show a change of the Android color 4292785296 by changing the saturation by 10% instead.

 4292785296

 4292785296

4294967295

 4290877814

 4294962374

 4289101661

 4294967266

 4287260229

 4285550127

 4283840281

 4282196480

 4280618240

 4278190080

 4292785296

 4292785296

 4292782202

 4292788390

 4292779108

 4292791484

 4292776013

 4292794579

 4292772919

 4292797673

 4292769825

 4292800767

 4292766731

 4292803839

 4292765184

 4292804607

Harmonies

Analogous

The Analogous color harmony consists of three colors that are next to each other on the color wheel.



4293635488



4292785296



4291345548

Triad

The Triadic color harmony groups three colors that are evenly spaced from another and form a triangle on the color wheel.



4292785296



4286368449



4291278051

Complementary

The Complementary color scheme is a pair of colors which are on the opposite of each other on the color wheel.



4292785296



4287675102

Split Complementary

Split-complementary colors differ from the complementary color scheme. The scheme consists of three colors, the original color and two neighbors of the complement color.



4289117419



4292785296



4285974744

Square

The Square scheme is like the rectangle color scheme, but the four colors are evenly spaced on the color wheel.



4292785296



4287809704



4287087592



4292914639

Rectangle

The Rectangle color scheme consists of four colors that form a rectangle on the color wheel.



4292785296



4290167184



4287087592



4290623463

Sweetspot

The Sweet Spot groups the original color and five complimentary colors.



4292785296



4294963427



4292776123



4286609263



4278190080



4286611584

Same Dimension

The Same Dimension uses a secret algorithm to generate beautiful new colors.



4292785296



4294952340



4292795024



4285557349



4289745152



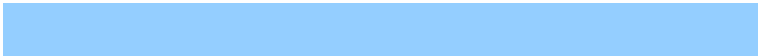
4281341440

Inverse Universe

The Inverse Universe completely reimagines the original color for something new.



4287675102



4287942399



4287665374



4284836720



4278214576



4278196784

Previews

White Background



This preview shows how the Android color 4292785296 looks on a white background.

Color Contrast Check

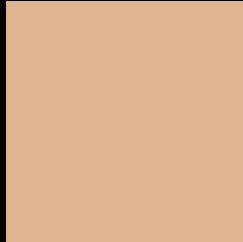
Large Text (above 18pt) WCAG AA × Fail

Any Text WCAG AA × Fail

Large Text (above 18pt) WCAG AAA × Fail

Any Text WCAG AAA × Fail

Black Background



This preview shows how the Android color 4292785296 looks on a black background.

Color Contrast Check

Large Text (above 18pt) WCAG AA ✓ Pass

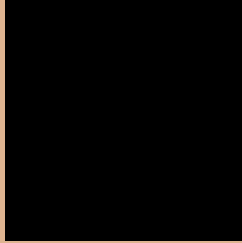
Any Text WCAG AA ✓ Pass

Large Text (above 18pt) WCAG AAA ✓ Pass

Any Text WCAG AAA ✓ Pass

If you want to check with other color combinations, try the [Color Contrast Checker](#).

Android 4292785296 Background



This preview shows how black text looks on a background with the Android color 4292785296.



This preview shows how white text looks on a background with the Android color 4292785296.

Color Blindness Simulation

Color vision deficiency is a very complex topic, and I could not describe the different causes any better than Wikipedia does, so if you want to learn more, you should check out their [article about color blindness](#).

Dichromacy



Original Color
4292785296

Protanopia
4291345556

Deuteranopia
4292719760



Tritanopia
4293111483

Trichromacy



Original Color
4292785296

Protanomaly
4291869075

Deuteranomaly
4292719760

Tritanomaly
4292980907

Monochromacy



Original Color
4292785296

Achromatopsia
4290559164

Achromatomaly
4291344812

CSS Examples

Text

The CSS property to change the color of the text to Android 4292785296 is called "color". The color property can be set on classes, ids or directly on the HTML element.

This example shows how text in the color `rgb(222, 180, 144)` looks like.

```
.text, #text, p{  
    color:rgb(222, 180, 144)  
}
```

If you want to add a text shadow in that color use the text-shadow property, you can generate a text shadow directly with our [CSS Text Shadow Generator](#).

Here you see how black text with a 4 pixel rgb(222, 180, 144) colored shadow looks like.

```
.shadow{ text-shadow: 4px 4px 2px rgb(222, 180, 144) }
```

Border

The CSS property to change the border of an element to Android 4292785296 is called "border". The border property can be set on classes, ids or directly on the HTML element.

This example shows the color as border, it can be applied via the CSS property "border" or "border-color".

```
.border, #border, table{ border:4px solid rgb(222, 180, 144) }
```

If only the border color should be changed use the property `border-color`.

```
.border{ border-color:rgb(222, 180, 144) }
```

If you want to add a box shadow in that color use:

Here you see how a box with a 4 pixel `rgb(222, 180, 144)` colored shadow looks like.

```
.boxshadow{ -moz-box-shadow:4px 4px 4px  
4px rgb(222, 180, 144); -webkit-box-  
shadow:4px 4px 4px 4px rgb(222, 180, 144);  
box-shadow:4px 4px 4px 4px rgb(222, 180,  
144) }
```

Background

The CSS property to change the background color of an element to Android 4292785296 is called "background". The background property can be set on classes, ids or directly on the HTML element.

```
.background, #background, body{  
background: rgb(222, 180, 144) }
```

If only the background color should be changed can be used:

```
.background{ background-color: rgb(222,  
180, 144) }
```

This example shows the color as background, it is applied via the CSS property "background".

To optimize and compress your CSS code, you can use our [online CSS compressor and optimizer](#) based on csstidy. If you want to create a linear or radial gradient as background or border, check our [CSS Gradient Generator](#).

Hey! You found this booklet interesting? Support Converting Colors with the new Membership Option!

The pro membership hides all ads, plus gives you double the colors in the color bucket, and more awesome pro features!

[Learn more, Memberships starting at \\$2.50/m!](#)

**Follow me
on Twitter!**

@ConvertingColor