

Converting Colors

Android(4292785588)

Have a look what the booklet for
Android(4292785588) contains.

Android(4292785588)	3
<i>Conversions</i>	4
<i>Details</i>	6
<i>Harmonies</i>	11
<i>Previews</i>	23
<i>Color Blindness Simulation</i>	26
<i>CSS Examples</i>	29

Color

Android(4292785588)

Conversions

Conversions Part 1

Format	Color
Hex	DEB5B4
RGB	222, 181, 180
RGB Percent	87%, 71%, 71%
CMY	0.1294, 0.2902, 0.2941
CMYK	0.00, 0.18, 0.19, 0.13
HSL	1°, 39%, 79%
HSV	1°, 19%, 87%
XYZ	54.8863, 51.8726, 50.2996
YIQ	193.1450, 24.7570, 8.3810

Conversions

Conversions Part 2

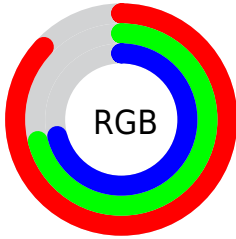
Format	Color
RYB	222, 181, 180
Decimal	14595508
CIELab	77.20, 14.63, 6.09
CIELCh	77, 15.842, 22.606
Yxy	51.8726, 0.3495, 0.3303
Android (android.graphics.Color)	4292785588 (0xFFDEB5B4)
YUV	193.1450, -6.4805, 25.3058
Hunter-Lab	72.0227, 9.9898, 9.0086

Details

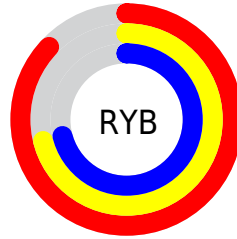
The Android color `4292785588` is a light color, and the websafe version is hex `FFCCCC`. A complement of this color would be `4290043358`, and the grayscale version is `4290888129`.

A 20% lighter version of the original color is `4294962668`, and `4289101951` is the 20% darker color. If you saturate the color by 10%, you get `4292779934`, and if you desaturate by 10%, it is `4292791242`.

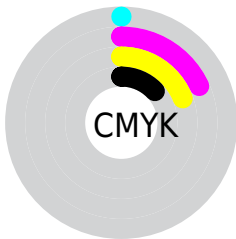
Distribution



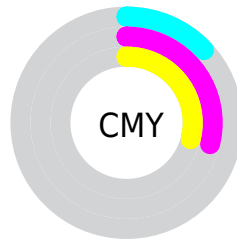
- Red (87%)
- Green (71%)
- Blue (71%)



- Red (87%)
- Yellow (71%)
- Blue (71%)



- Cyan (0%)
- Magenta (18%)
- Yellow (19%)
- Black (13%)



- Cyan (13%)
- Magenta (29%)
- Yellow (29%)

Brightness & Saturation Gradients

These gradients show how the Android color 4292785588 changes by changing the brightness by 10 percent. The first figure shows a shift by +10% for each color and the second figure -10%.

Similar to the brightness gradients but the following saturation gradients show a change of the Android color 4292785588 by changing the saturation by 10% instead.

 4292785588

 4292785588

4294967295

 4290943641

 4294962668

 4289101951

 4287391590

 4285681486

 4283971640

 4282393122

 4280945932

 4278648832

 4278190080

 4292785588

 4292785588

 4292779934

 4292791242

 4292774536

 4292796640

 4292768881

 4292802295

 4292763227

 4292804607

 4292757829

 4292752175

 4292746521

 4292741122

 4292740352

Harmonies

Analogous

The Analogous color harmony consists of three colors that are next to each other on the color wheel.



4292523459



4292785588



4292458664

Triad

The Triadic color harmony groups three colors that are evenly spaced from another and form a triangle on the color wheel.



4292785588



4289643948



4289380827

Complementary

The Complementary color scheme is a pair of colors which are on the opposite of each other on the color wheel.



4292785588



4290043358

Split Complementary

Split-complementary colors differ from the complementary color scheme. The scheme consists of three colors, the original color and two neighbors of the complement color.



4288529877



4292785588



4288661434

Square

The Square scheme is like the rectangle color scheme, but the four colors are evenly spaced on the color wheel.



4292785588



4290691492



4288268233



4290624730

Rectangle

The Rectangle color scheme consists of four colors that form a rectangle on the color wheel.



4292785588



4292066211



4288268233



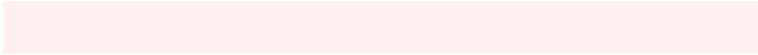
4289053658

Sweetspot

The Sweet Spot groups the original color and five complimentary colors.



4292785588



4294963440



4292785373



4286609271



4278190080



4286611584

Same Dimension

The Same Dimension uses a secret algorithm to generate beautiful new colors.



4292785588



4294952644



4292790964



4285556069



4289725440



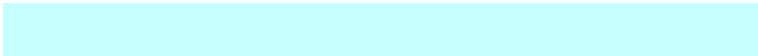
4281336064

Inverse Universe

The Inverse Universe completely reimagines the original color for something new.



4290043358



4291100415



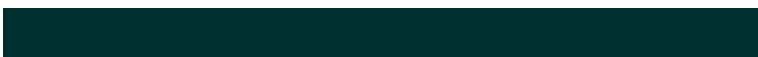
4290037982



4284838000



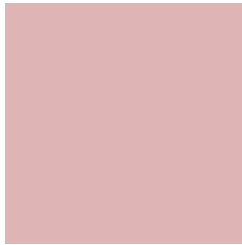
4278234288



4278202160

Previews

White Background



This preview shows how the Android color 4292785588 looks on a white background.

Color Contrast Check

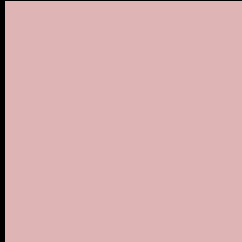
Large Text (above 18pt) WCAG AA × Fail

Any Text WCAG AA × Fail

Large Text (above 18pt) WCAG AAA × Fail

Any Text WCAG AAA × Fail

Black Background



This preview shows how the Android color 4292785588 looks on a black background.

Color Contrast Check

Large Text (above 18pt) WCAG AA ✓ Pass

Any Text WCAG AA ✓ Pass

Large Text (above 18pt) WCAG AAA ✓ Pass

Any Text WCAG AAA ✓ Pass

If you want to check with other color combinations, try the [Color Contrast Checker](#).

Android 4292785588 Background



This preview shows how black text looks on a background with the Android color 4292785588.



This preview shows how white text looks on a background with the Android color 4292785588.

Color Blindness Simulation

Color vision deficiency is a very complex topic, and I could not describe the different causes any better than Wikipedia does, so if you want to learn more, you should check out their [article about color blindness](#).

Dichromacy



Original Color
4292785588

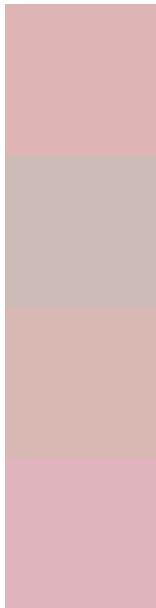
Protanopia
4291083961

Deuteranopia
4292262067



Tritanopia
4292916161

Trichromacy



Original Color
4292785588

Protanomaly
4291673015

Deuteranomaly
4292458419

Tritanomaly
4292850876

Monochromacy



Original Color
4292785588

Achromatopsia
4290888129

Achromatomaly
4291607996

CSS Examples

Text

The CSS property to change the color of the text to Android 4292785588 is called "color". The color property can be set on classes, ids or directly on the HTML element.

This example shows how text in the color `rgb(222, 181, 180)` looks like.

```
.text, #text, p{  
    color:rgb(222, 181, 180)  
}
```

If you want to add a text shadow in that color use the text-shadow property, you can generate a text shadow directly with our [CSS Text Shadow Generator](#).

Here you see how black text with a 4 pixel rgb(222, 181, 180) colored shadow looks like.

```
.shadow{ text-shadow: 4px 4px 2px rgb(222, 181, 180) }
```

Border

The CSS property to change the border of an element to Android 4292785588 is called "border". The border property can be set on classes, ids or directly on the HTML element.

This example shows the color as border, it can be applied via the CSS property "border" or "border-color".

```
.border, #border, table{ border:4px solid rgb(222, 181, 180) }
```

If only the border color should be changed use the property `border-color`.

```
.border{ border-color:rgb(222, 181, 180) }
```

If you want to add a box shadow in that color use:

Here you see how a box with a 4 pixel `rgb(222, 181, 180)` colored shadow looks like.

```
.boxshadow{ -moz-box-shadow:4px 4px 4px 4px rgb(222, 181, 180); -webkit-box-shadow:4px 4px 4px 4px rgb(222, 181, 180); box-shadow:4px 4px 4px 4px rgb(222, 181, 180) }
```

Background

The CSS property to change the background color of an element to Android 4292785588 is called "background". The background property can be set on classes, ids or directly on the HTML element.

```
.background, #background, body{  
background: rgb(222, 181, 180) }
```

If only the background color should be changed can be used:

```
.background{ background-color: rgb(222,  
181, 180) }
```

This example shows the color as background, it is applied via the CSS property "background".

To optimize and compress your CSS code, you can use our [online CSS compressor and optimizer](#) based on csstidy. If you want to create a linear or radial gradient as background or border, check our [CSS Gradient Generator](#).

Hey! You found this booklet interesting? Support Converting Colors with the new Membership Option!

The pro membership hides all ads, plus gives you double the colors in the color bucket, and more awesome pro features!

[Learn more, Memberships starting at \\$2.50/m!](#)

**Follow me
on Twitter!**

@ConvertingColor