

Converting Colors

Android(4292785827)

Have a look what the booklet for
Android(4292785827) contains.

Android(4292785827)	3
<i>Conversions</i>	4
<i>Details</i>	6
<i>Harmonies</i>	11
<i>Previews</i>	23
<i>Color Blindness Simulation</i>	26
<i>CSS Examples</i>	29

Color

Android(4292785827)

Conversions

Conversions Part 1

Format	Color
Hex	DEB6A3
RGB	222, 182, 163
RGB Percent	87%, 71%, 64%
CMY	0.1294, 0.2863, 0.3608
CMYK	0.00, 0.18, 0.27, 0.13
HSL	19°, 47%, 75%
HSV	19°, 27%, 87%
XYZ	53.4630, 51.6298, 41.7981
YIQ	191.7940, 29.9390, 2.5710

Conversions

Conversions Part 2

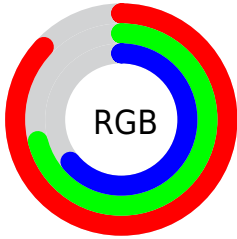
Format	Color
R_{YB}	222, 191, 163
Decimal	14595747
CIE _{Lab}	77.06, 11.62, 15.09
CIE _{LCh}	77, 19.048, 52.400
Yxy	51.6298, 0.3640, 0.3515
Android (android.graphics.Color)	4292785827 (0xFFDEB6A3)
YUV	191.7940, -14.1954, 26.4907
Hunter-Lab	71.8539, 7.0689, 15.8082

Details

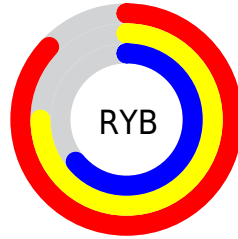
The Android color `4292785827` is a light color, and the websafe version is hex `FFCCCC`. A complement of this color would be `4288924638`, and the grayscale version is `4290822336`.

A 20% lighter version of the original color is `4294962906`, and `4289102191` is the 20% darker color. If you saturate the color by 10%, you get `4292781965`, and if you desaturate by 10%, it is `4292789689`.

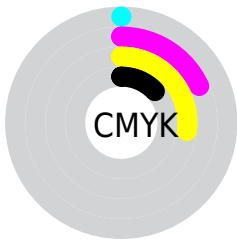
Distribution



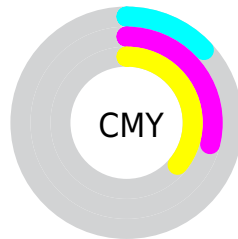
- Red (87%)
- Green (71%)
- Blue (64%)



- Red (87%)
- Yellow (75%)
- Blue (64%)



- Cyan (0%)
- Magenta (18%)
- Yellow (27%)
- Black (13%)



- Cyan (13%)
- Magenta (29%)
- Yellow (36%)

Brightness & Saturation Gradients

These gradients show how the Android color 4292785827 changes by changing the brightness by 10 percent. The first figure shows a shift by +10% for each color and the second figure -10%.

Similar to the brightness gradients but the following saturation gradients show a change of the Android color 4292785827 by changing the saturation by 10% instead.

 4292785827

 4292785827

4294967295

 4290943881

 4294962906

 4289102191

 4294967286

 4287326295

 4285616191

 4283906345

 4282327829

 4280880640

 4278190080

 4292785827

 4292785827

 4292781965

 4292789689

 4292778103

 4292793551

 4292774240

 4292797414

 4292770378

 4292801276

 4292766516

 4292804607

 4292762654

 4292758792

 4292757248

Harmonies

Analogous

The Analogous color harmony consists of three colors that are next to each other on the color wheel.



4293112498



4292785827



4291935388

Triad

The Triadic color harmony groups three colors that are evenly spaced from another and form a triangle on the color wheel.



4292785827



4288202937



4290558943

Complementary

The Complementary color scheme is a pair of colors which are on the opposite of each other on the color wheel.



4292785827



4288924638

Split Complementary

Split-complementary colors differ from the complementary color scheme. The scheme consists of three colors, the original color and two neighbors of the complement color.



4289053153



4292785827



4287613131

Square

The Square scheme is like the rectangle color scheme, but the four colors are evenly spaced on the color wheel.



4292785827



4289382056



4287940314



4291933908

Rectangle

The Rectangle color scheme consists of four colors that form a rectangle on the color wheel.



4292785827



4291084188



4287940314



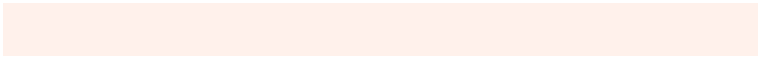
4290035168

Sweetspot

The Sweet Spot groups the original color and five complimentary colors.



4292785827



4294963691



4292781003



4286609267



4278190080



4286611584

Same Dimension

The Same Dimension uses a secret algorithm to generate beautiful new colors.



4292785827



4294953133



4292793251



4285557093



4289739008



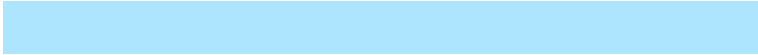
4281339904

Inverse Universe

The Inverse Universe completely reimagines the original color for something new.



4288924638



4289586687



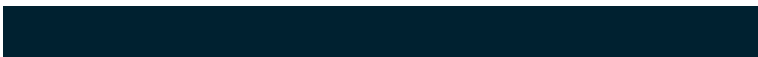
4288917214



4284837232



4278220720



4278198576

Previews

White Background



This preview shows how the Android color 4292785827 looks on a white background.

Color Contrast Check

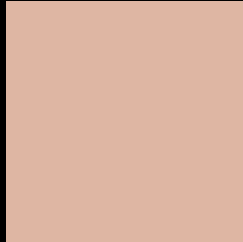
Large Text (above 18pt) WCAG AA × Fail

Any Text WCAG AA × Fail

Large Text (above 18pt) WCAG AAA × Fail

Any Text WCAG AAA × Fail

Black Background



This preview shows how the Android color 4292785827 looks on a black background.

Color Contrast Check

Large Text (above 18pt) WCAG AA ✓ Pass

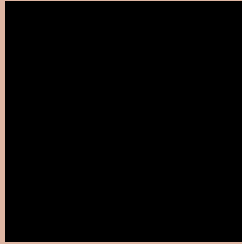
Any Text WCAG AA ✓ Pass

Large Text (above 18pt) WCAG AAA ✓ Pass

Any Text WCAG AAA ✓ Pass

If you want to check with other color combinations, try the [Color Contrast Checker](#).

Android 4292785827 Background



This preview shows how black text looks on a background with the Android color 4292785827.



This preview shows how white text looks on a background with the Android color 4292785827.

Color Blindness Simulation

Color vision deficiency is a very complex topic, and I could not describe the different causes any better than Wikipedia does, so if you want to learn more, you should check out their [article about color blindness](#).


Dichromacy



Original Color
4292785827

Protanopia
4291280551

Deuteranopia
4292589475



Tritanopia
4292981440

Trichromacy



Original Color
4292785827

Protanomaly
4291804070

Deuteranomaly
4292655011

Tritanomaly
4292916149

Monochromacy



Original Color
4292785827

Achromatopsia
4290822336

Achromatomaly
4291542197

CSS Examples

Text

The CSS property to change the color of the text to Android 4292785827 is called "color". The color property can be set on classes, ids or directly on the HTML element.

This example shows how text in the color `rgb(222, 182, 163)` looks like.

```
.text, #text, p{  
    color:rgb(222, 182, 163)  
}
```

If you want to add a text shadow in that color use the text-shadow property, you can generate a text shadow directly with our [CSS Text Shadow Generator](#).

Here you see how black text with a 4 pixel rgb(222, 182, 163) colored shadow looks like.

```
.shadow{ text-shadow: 4px 4px 2px rgb(222, 182, 163) }
```

Border

The CSS property to change the border of an element to Android 4292785827 is called "border". The border property can be set on classes, ids or directly on the HTML element.

This example shows the color as border, it can be applied via the CSS property "border" or "border-color".

```
.border, #border, table{ border:4px solid rgb(222, 182, 163) }
```

If only the border color should be changed use the property `border-color`.

```
.border{ border-color:rgb(222, 182, 163) }
```

If you want to add a box shadow in that color use:

Here you see how a box with a 4 pixel `rgb(222, 182, 163)` colored shadow looks like.

```
.boxshadow{ -moz-box-shadow:4px 4px 4px  
4px rgb(222, 182, 163); -webkit-box-  
shadow:4px 4px 4px 4px rgb(222, 182, 163);  
box-shadow:4px 4px 4px 4px rgb(222, 182,  
163) }
```

Background

The CSS property to change the background color of an element to Android 4292785827 is called "background". The background property can be set on classes, ids or directly on the HTML element.

```
.background, #background, body{  
background: rgb(222, 182, 163) }
```

If only the background color should be changed can be used:

```
.background{ background-color: rgb(222,  
182, 163) }
```

This example shows the color as background, it is applied via the CSS property "background".

To optimize and compress your CSS code, you can use our [online CSS compressor and optimizer](#) based on csstidy. If you want to create a linear or radial gradient as background or border, check our [CSS Gradient Generator](#).

Hey! You found this booklet interesting? Support Converting Colors with the new Membership Option!

The pro membership hides all ads, plus gives you double the colors in the color bucket, and more awesome pro features!

[Learn more, Memberships starting at \\$2.50/m!](#)

**Follow me
on Twitter!**

@ConvertingColor