

# Converting Colors

Android(4292786617)

Have a look what the booklet for  
Android(4292786617) contains.

<b>Android(4292786617)</b> .....	3
<b><i>Conversions</i></b> .....	4
<b><i>Details</i></b> .....	6
<b><i>Harmonies</i></b> .....	11
<b><i>Previews</i></b> .....	23
<b><i>Color Blindness Simulation</i></b> .....	26
<b><i>CSS Examples</i></b> .....	29

# **Color**

**Android(4292786617)**

# Conversions

## Conversions Part 1

Format	Color
Hex	DEB9B9
RGB	222, 185, 185
RGB Percent	87%, 73%, 73%
CMY	0.1294, 0.2745, 0.2745
CMYK	0.00, 0.17, 0.17, 0.13
HSL	0°, 36%, 80%
HSV	0°, 17%, 87%
XYZ	56.2301, 53.7303, 53.3063
YIQ	196.0630, 22.0520, 7.8440

# Conversions

## Conversions Part 2

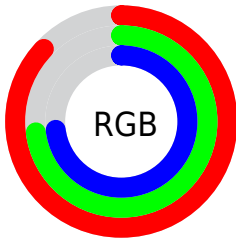
<b>Format</b>	<b>Color</b>
R <sub>Y</sub> B	222, 185, 185
Decimal	14596537
CIE Lab	78.30, 13.26, 4.96
CIE LCh	78, 14.155, 20.531
Yxy	53.7303, 0.3444, 0.3291
Android (android.graphics.Color)	4292786617 (0xFFDEB9B9)
YUV	196.0630, -5.4541, 22.7467
Hunter-Lab	73.3010, 8.6530, 8.1935

# Details

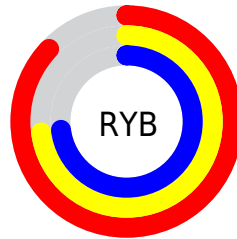
The Android color `4292786617` is a light color, and the websafe version is hex `FFCCCC`. A complement of this color would be `4290371294`, and the grayscale version is `4291085508`.

A 20% lighter version of the original color is `4294963697`, and `4289102980` is the 20% darker color. If you saturate the color by 10%, you get `4292780963`, and if you desaturate by 10%, it is `4292792271`.

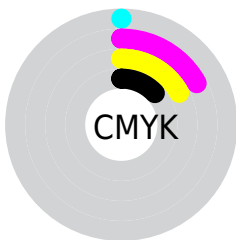
# Distribution



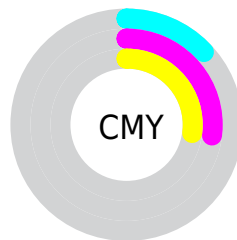
- Red (87%)
- Green (73%)
- Blue (73%)



- Red (87%)
- Yellow (73%)
- Blue (73%)



- Cyan (0%)
- Magenta (17%)
- Yellow (17%)
- Black (13%)



- Cyan (13%)
- Magenta (27%)
- Yellow (27%)

# Brightness & Saturation Gradients

These gradients show how the Android color 4292786617 changes by changing the brightness by 10 percent. The first figure shows a shift by +10% for each color and the second figure -10%.

Similar to the brightness gradients but the following saturation gradients show a change of the Android color 4292786617 by changing the saturation by 10% instead.



 4292786617

 4292786617

4294967295

 4290944670

 4294963697

 4289102980

 4287392619

 4285682259

 4284037948

 4282459430

 4280946961

 4279173120

 4278190080

 4292786617

 4292786617

 4292780963

 4292792271

 4292775309

 4292797925

 4292769398

 4292803836

 4292763744

 4292804607

 4292758090

 4292752436

 4292746782

 4292740871

 4292739072

# Harmonies

## Analogous

The Analogous color harmony consists of three colors that are next to each other on the color wheel.



4292524486



4292786617



4292524974

# Triad

The Triadic color harmony groups three colors that are evenly spaced from another and form a triangle on the color wheel.



4292786617



4289972145



4289709275

# Complementary

The Complementary color scheme is a pair of colors which are on the opposite of each other on the color wheel.



4292786617



4290371294

# Split Complementary

Split-complementary colors differ from the complementary color scheme. The scheme consists of three colors, the original color and two neighbors of the complement color.



4288923861



4292786617



4289186237

# Square

The Square scheme is like the rectangle color scheme, but the four colors are evenly spaced on the color wheel.



4292786617



4291019945



4288727498



4290756826

# Rectangle

The Rectangle color scheme consists of four colors that form a rectangle on the color wheel.



4292786617



4292132521



4288727498



4289381850

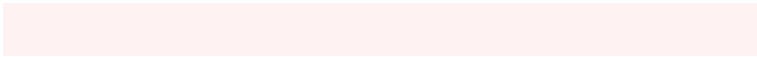


# Sweetspot

The Sweet Spot groups the original color and five complimentary colors.



4292786617



4294963954



4292786654



4286609528



4278190080



4286611584



# Same Dimension

The Same Dimension uses a secret algorithm to generate beautiful new colors.



4292786617



4294954188



4292791225



4285556069



4289724416



4281335808



# Inverse Universe

The Inverse Universe completely reimagines the original color for something new.



4290371294



4291624959



4290366430



4284838000



4278235312

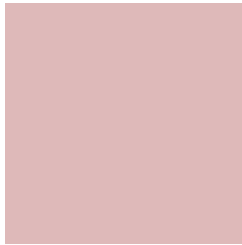


4278202416



# Previews

## White Background



This preview shows how the Android color 4292786617 looks on a white background.

## Color Contrast Check

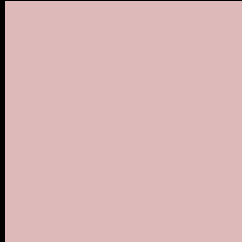
Large Text (above 18pt) WCAG AA × Fail

Any Text WCAG AA × Fail

Large Text (above 18pt) WCAG AAA × Fail

Any Text WCAG AAA × Fail

# Black Background



This preview shows how the Android color 4292786617 looks on a black background.

## Color Contrast Check

Large Text (above 18pt) WCAG AA ✓ Pass

Any Text WCAG AA ✓ Pass

Large Text (above 18pt) WCAG AAA ✓ Pass

Any Text WCAG AAA ✓ Pass

If you want to check with other color combinations, try the [Color Contrast Checker](#).



# Android 4292786617 Background



This preview shows how black text looks on a background with the Android color 4292786617.



This preview shows how white text looks on a background with the Android color 4292786617.

# Color Blindness Simulation

Color vision deficiency is a very complex topic, and I could not describe the different causes any better than Wikipedia does, so if you want to learn more, you should check out their [article about color blindness](#).

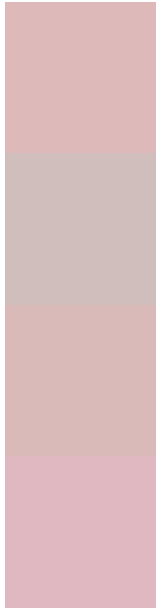
## Dichromacy





**Tritanopia**  
4292917189

# Trichromacy



**Original Color**  
4292786617

**Protanomaly**  
4291804860

**Deuteranomaly**  
4292524729

**Tritanomaly**  
4292851905

# Monochromacy



**Original Color**  
4292786617

**Achromatopsia**  
4291085508

**Achromatomaly**  
4291674304

# CSS Examples

## Text

The CSS property to change the color of the text to Android 4292786617 is called "color". The color property can be set on classes, ids or directly on the HTML element.

This example shows how text in the color `rgb(222, 185, 185)` looks like.

```
.text, #text, p{  
    color:rgb(222, 185, 185)  
}
```

If you want to add a text shadow in that color use the text-shadow property, you can generate a text shadow directly with our [CSS Text Shadow Generator](#).

Here you see how black text with a 4 pixel rgb(222, 185, 185) colored shadow looks like.

```
.shadow{ text-shadow: 4px 4px 2px rgb(222, 185, 185) }
```

## Border

The CSS property to change the border of an element to Android 4292786617 is called "border". The border property can be set on classes, ids or directly on the HTML element.

This example shows the color as border, it can be applied via the CSS property "border" or "border-color".

```
.border, #border, table{ border:4px solid rgb(222, 185, 185) }
```

If only the border color should be changed use the property `border-color`.

```
.border{ border-color:rgb(222, 185, 185) }
```

If you want to add a box shadow in that color use:

Here you see how a box with a 4 pixel `rgb(222, 185, 185)` colored shadow looks like.

```
.boxshadow{ -moz-box-shadow:4px 4px 4px  
4px rgb(222, 185, 185); -webkit-box-  
shadow:4px 4px 4px 4px rgb(222, 185, 185);  
box-shadow:4px 4px 4px 4px rgb(222, 185,  
185) }
```

# Background

The CSS property to change the background color of an element to Android 4292786617 is called "background". The background property can be set on classes, ids or directly on the HTML element.

```
.background, #background, body{  
background: rgb(222, 185, 185) }
```

If only the background color should be changed can be used:

```
.background{ background-color: rgb(222,  
185, 185) }
```

This example shows the color as background, it is applied via the CSS property "background".

To optimize and compress your CSS code, you can use our [online CSS compressor and optimizer](#) based on csstidy. If you want to create a linear or radial gradient as background or border, check our [CSS Gradient Generator](#).



Hey! You found this booklet interesting? Support Converting Colors with the new Membership Option!

The pro membership hides all ads, plus gives you double the colors in the color bucket, and more awesome pro features!

**[Learn more, Memberships starting at \\$2.50/m!](#)**

**Follow me  
on Twitter!**

@ConvertingColor