

Converting Colors

Android(4292786861)

Have a look what the booklet for
Android(4292786861) contains.

Android(4292786861)	3
<i>Conversions</i>	4
<i>Details</i>	6
<i>Harmonies</i>	11
<i>Previews</i>	23
<i>Color Blindness Simulation</i>	26
<i>CSS Examples</i>	29

Color

Android(4292786861)

Conversions

Conversions Part 1

Format	Color
Hex	DEBAAD
RGB	222, 186, 173
RGB Percent	87%, 73%, 68%
CMY	0.1294, 0.2706, 0.3216
CMYK	0.00, 0.16, 0.22, 0.13
HSL	16°, 43%, 77%
HSV	16°, 22%, 87%
XYZ	55.2259, 53.6645, 46.9827
YIQ	195.2820, 25.6290, 3.5890

Conversions

Conversions Part 2

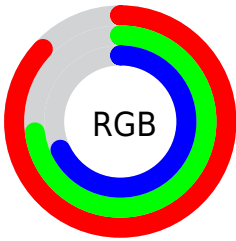
Format	Color
R _Y B	222, 191, 173
Decimal	14596781
CIE Lab	78.27, 10.91, 11.40
CIE LCh	78, 15.775, 46.250
Yxy	53.6645, 0.3543, 0.3443
Android (android.graphics.Color)	4292786861 (0xFFDEBAAD)
YUV	195.2820, -10.9850, 23.4317
Hunter-Lab	73.2561, 6.3685, 13.2537

Details

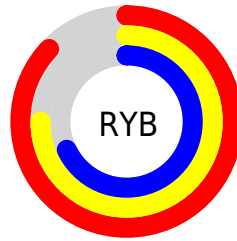
The Android color `4292786861` is a light color, and the websafe version is hex `FFCCCC`. A complement of this color would be `4289581534`, and the grayscale version is `4291019715`.

A 20% lighter version of the original color is `4294963940`, and `4289103225` is the 20% darker color. If you saturate the color by 10%, you get `4292782743`, and if you desaturate by 10%, it is `4292790979`.

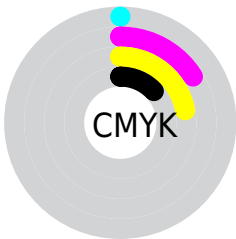
Distribution



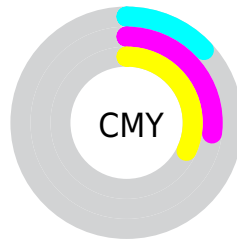
- Red (87%)
- Green (73%)
- Blue (68%)



- Red (87%)
- Yellow (75%)
- Blue (68%)



- Cyan (0%)
- Magenta (16%)
- Yellow (22%)
- Black (13%)



- Cyan (13%)
- Magenta (27%)
- Yellow (32%)

Brightness & Saturation Gradients

These gradients show how the Android color 4292786861 changes by changing the brightness by 10 percent. The first figure shows a shift by +10% for each color and the second figure -10%.

Similar to the brightness gradients but the following saturation gradients show a change of the Android color 4292786861 by changing the saturation by 10% instead.

 4292786861

 4292786861

4294967295

 4290944914

 4294963940

 4289103225

 4287327328

 4285616968

 4283972658

 4282394141

 4280947203

 4278779904

 4278190080

 4292786861

 4292786861

 4292782743

 4292790979

 4292778369

 4292795353

 4292774250

 4292799472

 4292770132

 4292803583

 4292765758

 4292804607

 4292761640

 4292757522

 4292754176

Harmonies

Analogous

The Analogous color harmony consists of three colors that are next to each other on the color wheel.



4292982970



4292786861



4292132517

Triad

The Triadic color harmony groups three colors that are evenly spaced from another and form a triangle on the color wheel.



4292786861



4289055418



4290560221

Complementary

The Complementary color scheme is a pair of colors which are on the opposite of each other on the color wheel.



4292786861



4289581534

Split Complementary

Split-complementary colors differ from the complementary color scheme. The scheme consists of three colors, the original color and two neighbors of the complement color.



4289381854



4292786861



4288465609

Square

The Square scheme is like the rectangle color scheme, but the four colors are evenly spaced on the color wheel.



4292786861



4290037677



4288596438



4291738582

Rectangle

The Rectangle color scheme consists of four colors that form a rectangle on the color wheel.



4292786861



4291478181



4288596438



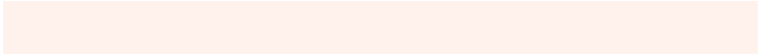
4290167518

Sweetspot

The Sweet Spot groups the original color and five complimentary colors.



4292786861



4294963949



4292783570



4286609525



4278190080



4286611584

Same Dimension

The Same Dimension uses a secret algorithm to generate beautiful new colors.



4292786861



4294954685



4292793005



4285556837



4289736448



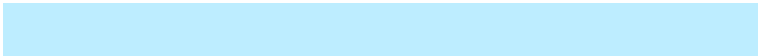
4281339136

Inverse Universe

The Inverse Universe completely reimagines the original color for something new.



4289581534



4290637311



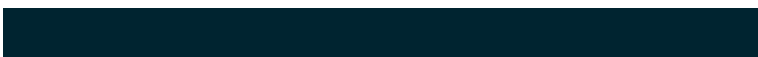
4289575390



4284837232



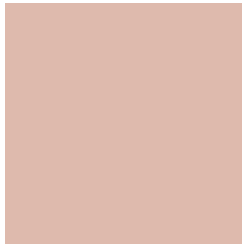
4278223280



4278199344

Previews

White Background



This preview shows how the Android color 4292786861 looks on a white background.

Color Contrast Check

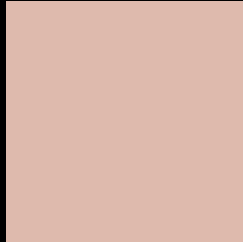
Large Text (above 18pt) WCAG AA × Fail

Any Text WCAG AA × Fail

Large Text (above 18pt) WCAG AAA × Fail

Any Text WCAG AAA × Fail

Black Background



This preview shows how the Android color 4292786861 looks on a black background.

Color Contrast Check

Large Text (above 18pt) WCAG AA ✓ Pass

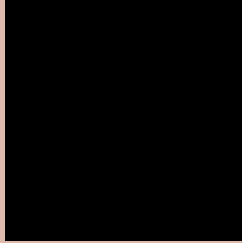
Any Text WCAG AA ✓ Pass

Large Text (above 18pt) WCAG AAA ✓ Pass

Any Text WCAG AAA ✓ Pass

If you want to check with other color combinations, try the [Color Contrast Checker](#).

Android 4292786861 Background



This preview shows how black text looks on a background with the Android color 4292786861.



This preview shows how white text looks on a background with the Android color 4292786861.

Color Blindness Simulation

Color vision deficiency is a very complex topic, and I could not describe the different causes any better than Wikipedia does, so if you want to learn more, you should check out their [article about color blindness](#).

Dichromacy



Original Color
4292786861

Protanopia
4291412401

Deuteranopia
4292656045



Tritanopia
4292982469

Trichromacy



Original Color
4292786861

Protanomaly
4291935920

Deuteranomaly
4292721581

Tritanomaly
4292917180

Monochromacy



Original Color
4292786861

Achromatopsia
4291019715

Achromatomaly
4291674299

CSS Examples

Text

The CSS property to change the color of the text to Android 4292786861 is called "color". The color property can be set on classes, ids or directly on the HTML element.

This example shows how text in the color `rgb(222, 186, 173)` looks like.

```
.text, #text, p{  
    color:rgb(222, 186, 173)  
}
```

If you want to add a text shadow in that color use the text-shadow property, you can generate a text shadow directly with our [CSS Text Shadow Generator](#).

Here you see how black text with a 4 pixel rgb(222, 186, 173) colored shadow looks like.

```
.shadow{ text-shadow: 4px 4px 2px rgb(222, 186, 173) }
```

Border

The CSS property to change the border of an element to Android 4292786861 is called "border". The border property can be set on classes, ids or directly on the HTML element.

This example shows the color as border, it can be applied via the CSS property "border" or "border-color".

```
.border, #border, table{ border:4px solid rgb(222, 186, 173) }
```

If only the border color should be changed use the property `border-color`.

```
.border{ border-color:rgb(222, 186, 173) }
```

If you want to add a box shadow in that color use:

Here you see how a box with a 4 pixel `rgb(222, 186, 173)` colored shadow looks like.

```
.boxshadow{ -moz-box-shadow:4px 4px 4px  
4px rgb(222, 186, 173); -webkit-box-  
shadow:4px 4px 4px 4px rgb(222, 186, 173);  
box-shadow:4px 4px 4px 4px rgb(222, 186,  
173) }
```

Background

The CSS property to change the background color of an element to Android 4292786861 is called "background". The background property can be set on classes, ids or directly on the HTML element.

```
.background, #background, body{  
background: rgb(222, 186, 173) }
```

If only the background color should be changed can be used:

```
.background{ background-color: rgb(222,  
186, 173) }
```

This example shows the color as background, it is applied via the CSS property "background".

To optimize and compress your CSS code, you can use our [online CSS compressor and optimizer](#) based on csstidy. If you want to create a linear or radial gradient as background or border, check our [CSS Gradient Generator](#).

Hey! You found this booklet interesting? Support Converting Colors with the new Membership Option!

The pro membership hides all ads, plus gives you double the colors in the color bucket, and more awesome pro features!

[Learn more, Memberships starting at \\$2.50/m!](#)

**Follow me
on Twitter!**

@ConvertingColor